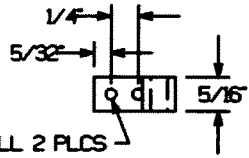
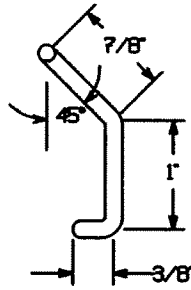
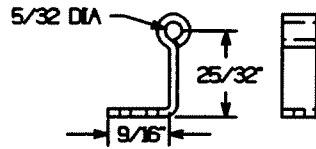


ACTUATOR ROD 1 LH & 1 RH REQD
5/32 DIA CRS ROD

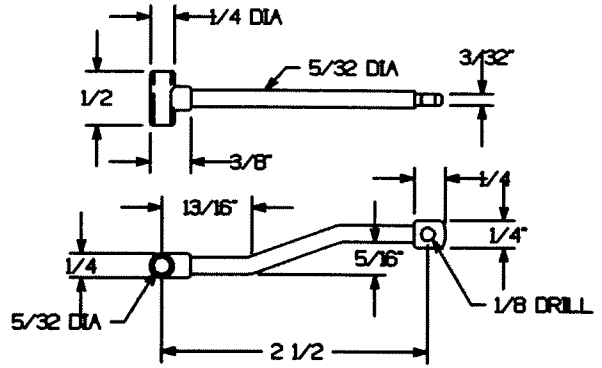


#33 DRILL 2 PLCS

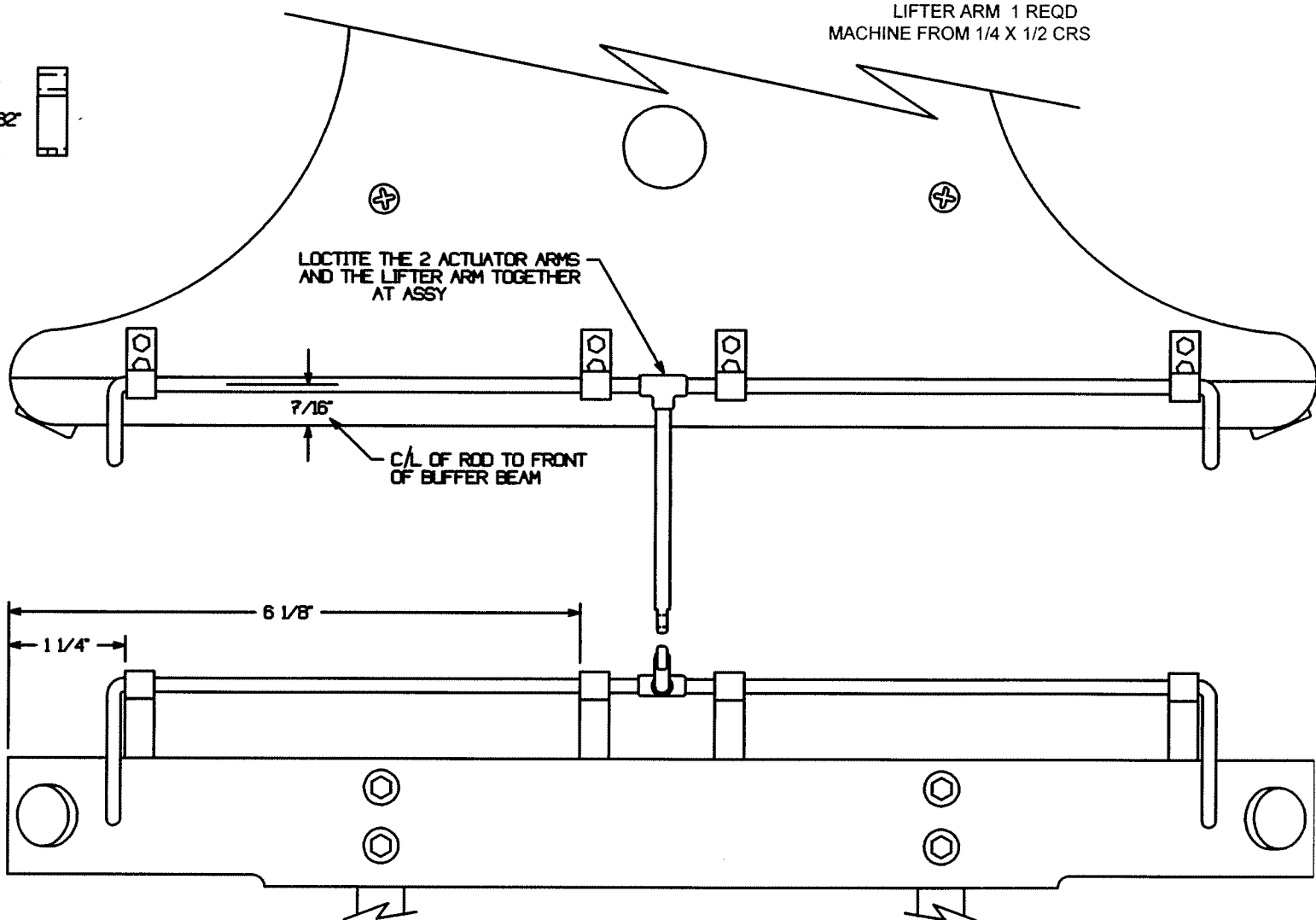


BRACKET 4 REQD
14 GA (.074) STEEL

3-48 HEX HEAD
CAP SCHS



LIFTER ARM 1 REQD
MACHINE FROM 1/4 X 1/2 CRS



LOCTITE THE 2 ACTUATOR ARMS
AND THE LIFTER ARM TOGETHER
AT ASSY

C/L OF ROD TO FRONT
OF BUFFER BEAM

KNUCKLE PIN LIFTER
DTLS AND ASSY
1 1/2" LIGHT MOGUL
SHEET 38