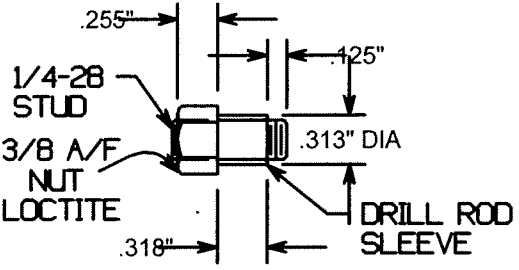
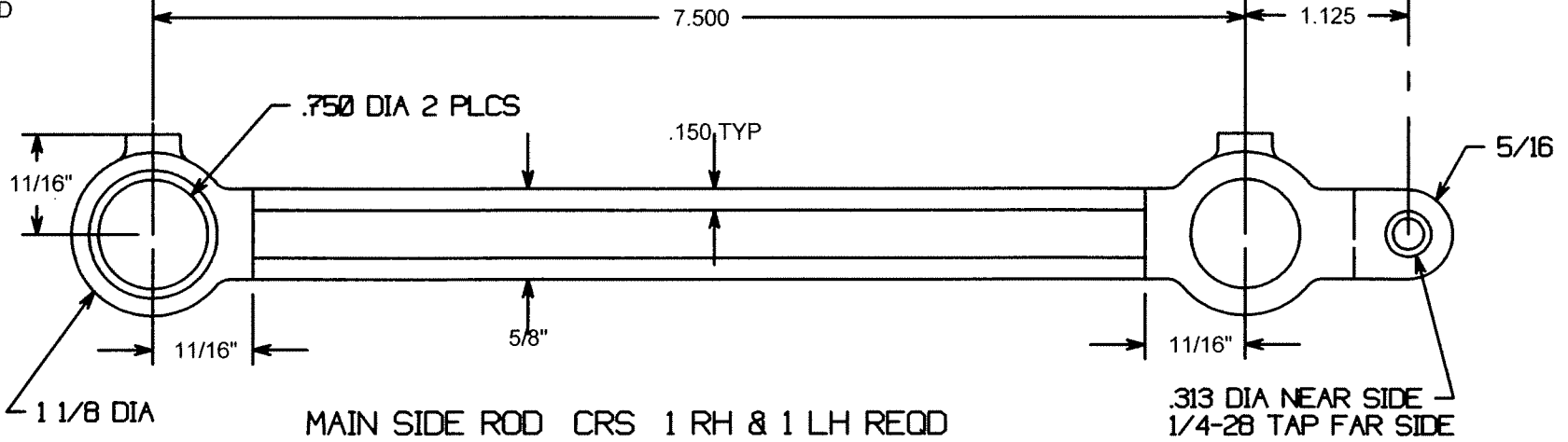


NOTE - DIMS SHOWN WILL GIVE .005 PRESS FIT ON OD IN SIDE RODS AND LEAVE .005 LOOSE FIT ON CRANK PINS.

SIDE ROD BUSHING
YLATRON TYPE NSM
6 REQD.



PIVOT BOLT
2 REQD

SIDE RODS
1 1/2" LIGHT MOGUL
SHEET 19

