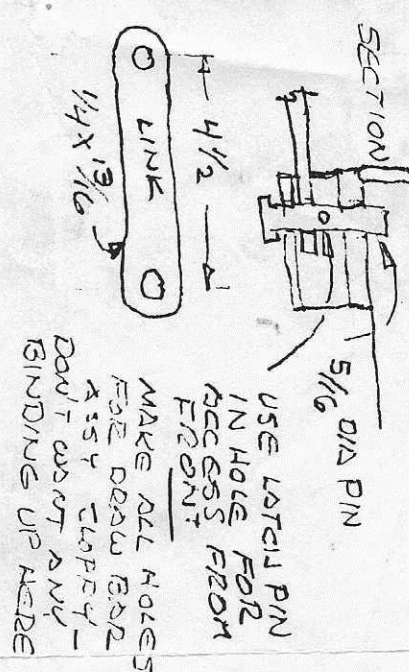
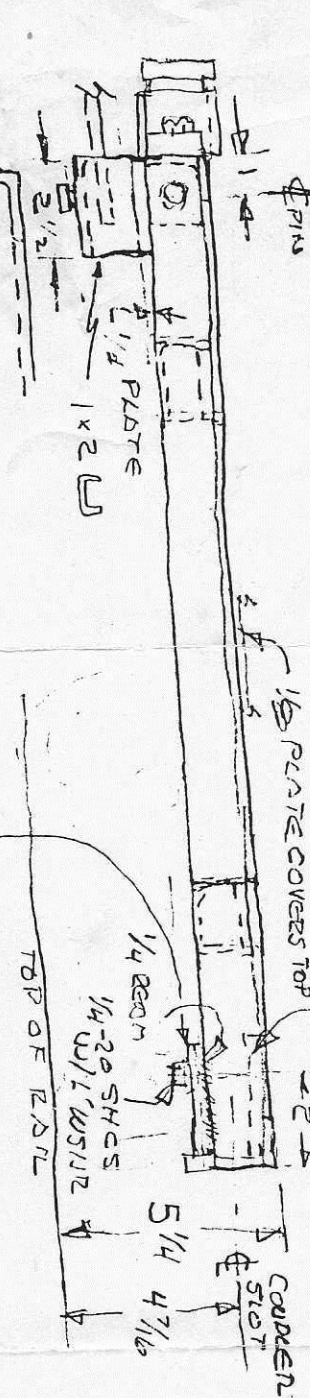
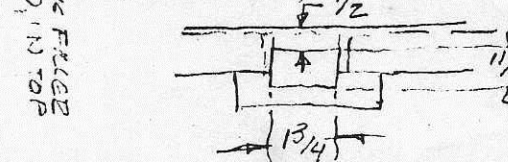
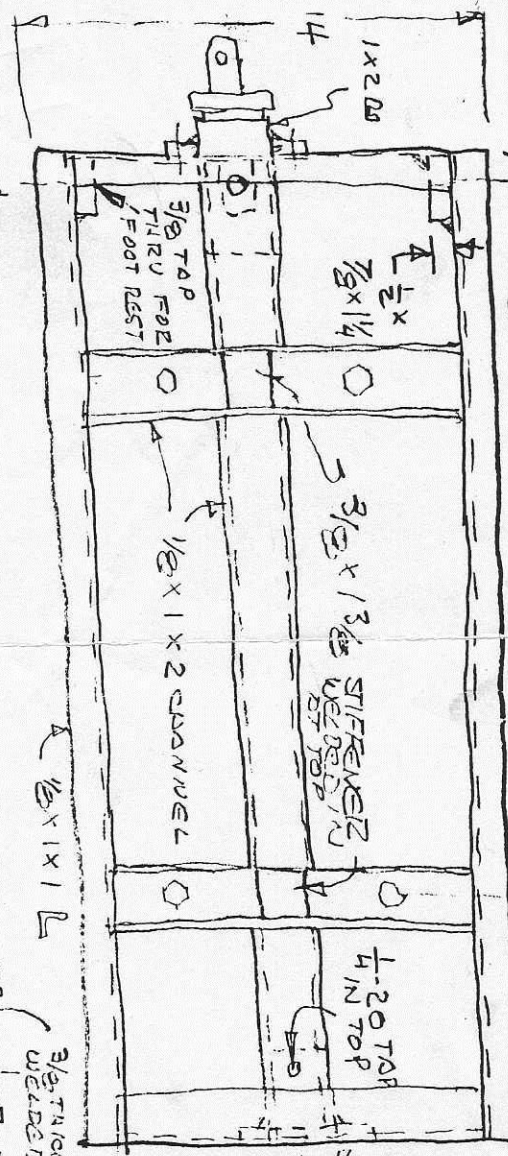
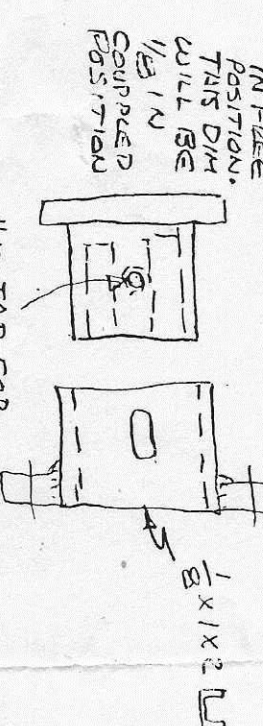
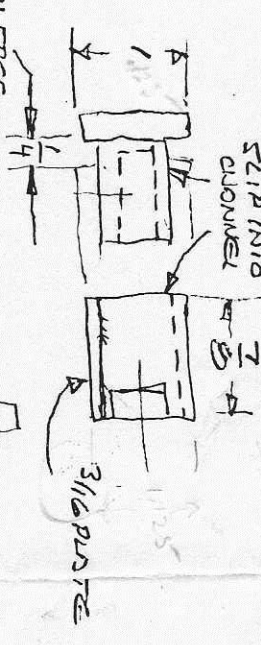
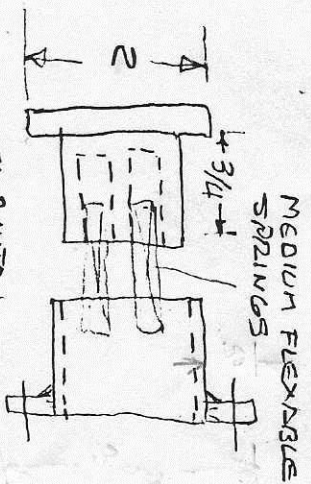
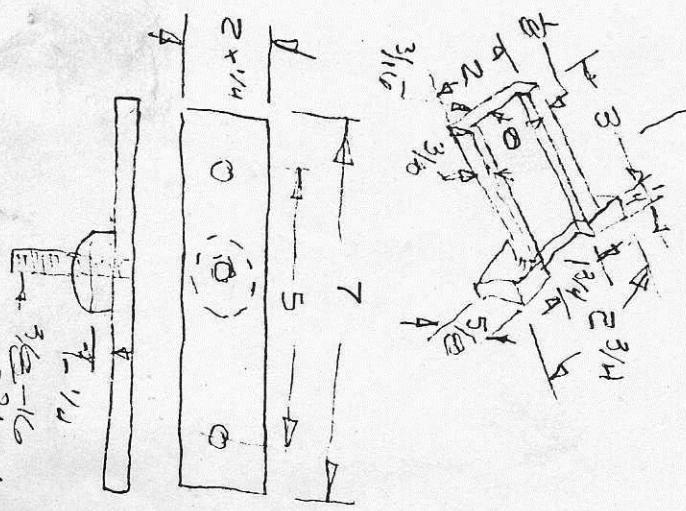


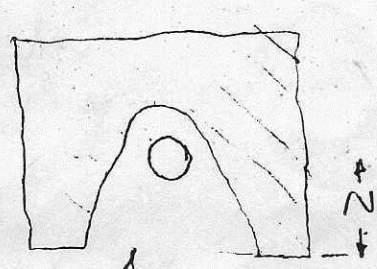
3 2 1/4
TRUCK 7 CARS
7 5/8



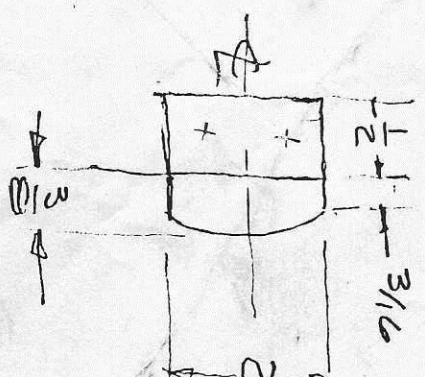
USE LATCIL PIN IN HOLE FOR ACCESS FROM FRONT
MAKE ALL HOLES FOR DRAW BAR ASSY STAFFY - DON'T WANT ANY BINDING UP HERE



#10 TAP FOR SET SCW WHICH PROTRUDS THRU SLOT IN BOTTOM PLDTE (STOP)



THE IDEA OF THIS SPRING LOOSE BUFFER IS TO MAINTAIN A REASONABLE PRESSURE BETWEEN ENGINE AND TENDER. IT SHOULD BE ADJUSTED SO THAT WHEN COUPLING UP THE TENDER MUST BE PUSHED AGAINST THE ENGINE FOR PIN ON ENGINE END TO FALL INTO LINK HOLE



FIX A COUPLER POCKET SO THAT WHEN TENDER IS PUSHED AGAINST ENGINE THE LINK WILL BE GUIDED IN CLOSE ENOUGH THAT ENGINE

