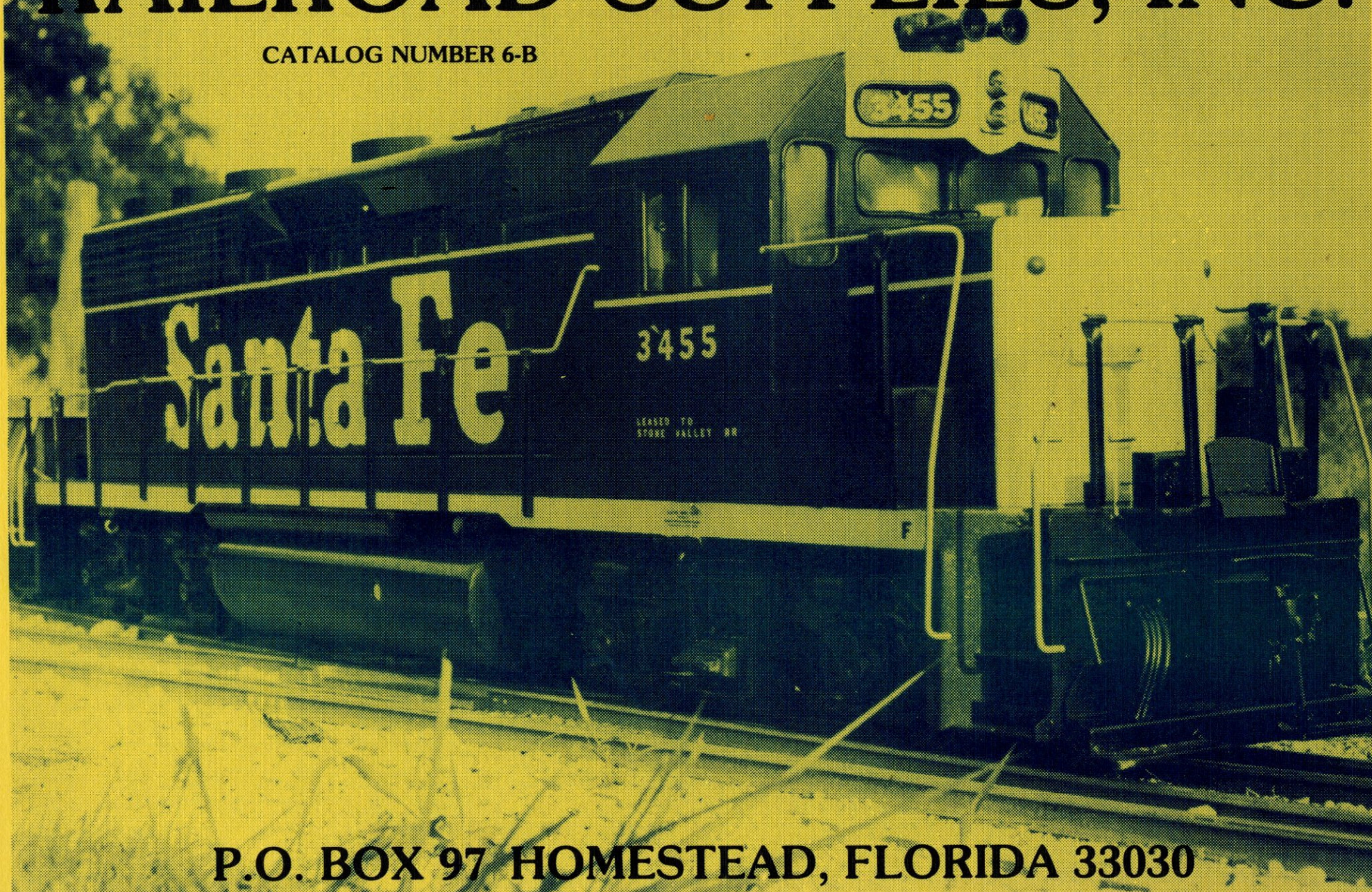


# KOSTER'S MINIATURE RAILROAD SUPPLIES, INC.

CATALOG NUMBER 6-B



P.O. BOX 97 HOMESTEAD, FLORIDA 33030



Bill Koster says: "Welcome to the hobby of  
LARGE-SCALE MODEL RAILROADING."

For that feeling of real railroading, you must "RIDE THE TRAIN." Smaller scales cannot provide the feeling of real railroading. Find out what slack in a long train feels like; feel what a train will do when you try to stop fast. In  $1\frac{1}{2}$ " scale, cars are large enough to ride on comfortably. You don't need a lot of room to build a railroad, most backyards will do. Since you can run but one locomotive at a time by yourself, most backyard railroads have only 1 or 2 locomotives and a few cars. This makes the cost comparable to a moderate railroad in smaller scale. Other things that  $1\frac{1}{2}$ " scale have to offer include working on cars and locomotives of much larger size (also easier on the eyes); the chance to learn machining while making parts for your railroad; track construction and maintenance similar to the prototype and outdoor railroading.

TERMS OF SALE: Prices in this catalog are subject to change and you will be billed at current prices when order is shipped. If the price increase is a significant amount, you will be notified before shipment as to the new price. For large orders involving machining and the total is over \$100, we will begin work on the order with a 50% deposit and balance due before shipment is made. Please add 4% sales tax if you are a resident of Florida.



Our goal is to provide you with accurate parts for building your railroad at low cost. If you need something that we do not have, let us know, it may be our next new item.

OUR CATALOG POLICY - Purchasers of any single purchase of \$25 or more during the preceeding catalog period will receive our next catalog free.

We have a  $7\frac{1}{2}$ " gauge track,  $1\frac{1}{4}$  miles due north of the S.C.L. depot in Homestead. Visitors are welcome. Please call ahead if possible.

KOSTER'S MINIATURE RAILROAD SUPPLIES  
2100 N.W. 9th Ave. P.O. Box 97  
Homestead, Florida 33030  
(305) 247-2811

CATALOG NUMBER 6-B

COMPOSED IN FEBRUARY '77, REVISED IN MAY '77, MAY '78



# CHOICE OF SCALE AND GAUGE

The following is written as an introduction to newcomers in the hobby. If you have not yet decided on a scale or gauge, perhaps the following comments will help in your decision.

Live steam and large-scale model railroading have covered the following scales:  $1/4"$ ,  $1/2"$ ,  $3/4"$ ,  $1"$ ,  $1\frac{1}{2}"$ ,  $2"$ ,  $2\frac{1}{4}"$ ,  $2\frac{1}{2}"$ ,  $3"$  and  $3\frac{3}{4}"$  to the foot. Of these scales,  $2\frac{1}{2}"$  and  $3\frac{3}{4}"$  are primarily devoted to narrow gauge modeling which we will discuss later. In standard gauge modeling,  $1\frac{1}{2}"$  scale has become the most popular. The reason for this is obvious,  $1\frac{1}{2}"$  models are about the smallest that most people can ride comfortably and yet the models can be made light enough to be transported fairly easily. The next most popular scale is  $1"$  to the foot, where cars are  $10"$  in width making them difficult to sit on. Smaller scales are almost always ridden sidesaddle on elevated tracks. The larger scales,  $2"$  and  $2\frac{1}{4}"$  to the foot have not had many followers making availability of parts very difficult.  $3"$  to the foot becomes a park size train. Since the weight of locomotives and rolling stock is proportional to the cube,  $3"$  models will weigh almost eight times as much as a  $1\frac{1}{2}"$  scale model.

In  $1\frac{1}{2}"$  scale, two gauges of track are used,  $7\frac{1}{2}"$  and  $7\frac{1}{4}"$ . All of the United States with the exception of most of New England, New York and parts of Pennsylvania & New Jersey are  $7\frac{1}{2}"$  gauge. In New England most of the trackage is  $7\frac{1}{4}"$ . For this reason, when considering your

choice of gauge, it is suggested that you use the same gauge as others in your area. This allows for interchange such as at meets, where live steamers from all over gather to operate their equipment on one track. Neither of the above gauges are exactly correct as the prototype track gauge ( $56\frac{1}{2}"$ ) divided by 8 comes out to exactly  $7\frac{1}{16}"$ . For this reason, a few modelers using  $7\frac{1}{2}"$  gauge track will build their models to  $1\frac{5}{8}"$  to the foot. A locomotive built to these proportions does look considerably more massive when displayed alongside a model following the  $1\frac{1}{2}"$  scale dimensions.

Narrow gauge modeling on existing tracks can present an interesting variation. For example, if one wishes to model a  $3'$  narrow gauge prototype and uses  $7\frac{1}{2}"$  track gauge, the model is then built to a scale of  $2\frac{1}{4}"$  to the foot. Since narrow gauge cars are at least  $8'$  in width, the models are then at least  $20"$  wide. If the model is of a  $2'$  prototype, the scale then becomes  $3\frac{3}{4}"$  to the foot. Modeling in these two scales can provide large models with the ability to be compatible with  $1\frac{1}{2}"$  scale models on  $7\frac{1}{2}"$  gauge track. The two limitations in narrow gauge are a lack of commercially available parts as well as the necessity to model old time equipment.

Whatever your choice of scale or gauge, you will find that large scale model railroading will provide you with a most rewarding hobby.



# INDEX

Axles	12,13,14,16,20,21,22	Crossing Sign	29	Journal Box, F & GP	13
		Crossing, Track	28	Journal Box, Passenger	22
Bearings	12,13,14,16,20,21,22			Journal Box, Switcher	14
Bodies, Diesel	19	Door, Passenger End	23		
Bolster, CNJ Truck	12			Lamps	18
Bolster, F & GP Truck	13	Emblems, Peel-N-Stick	30-31	Live Steam	34-35
Bolster, Freight Truck	20	End Sill	24	Locomotives, Custom	6-11
Bolster, Passenger Truck	22	Equalizer Bars, Passenger	22	Locomotives, F-7	10-11
Bolster, Toy Box Caboose	21	Equalizer Bars, Switcher	15	Locomotives, GP-7	8-9
Books	38-51,inside rear cover				
Books, Train Shed	36-37	Freight Cars	26-27	Motors, Diesel	16
Box Car	26				
Brake Rigging	13	Gears	16	Ordering Information	52
		Gearbox	16		
Caboose	26	Glad Hands	24	Passenger Cars	25
Caps, Engineer	33	Gondolas	27		
Clock, Train	32			Rail	28
Couplers	24	Headlights	18	Roof Vents, Diesel	18



# INDEX

Side Frame, Arch Bar	17	Tank Car	26	Wheel, 3 1/2" (26")	17
Side Frame, CNJ Diesel	12	Train Clock	32	Wheel, 4 1/8" (33")	20,21
Side Frame, F & GP Type	13	Truck End Pieces	13,14,22	Wheel, 4 1/2" (36")	12,22
Side Frame, Freight Truck	20	Trucks, Arch Bar Trolley	17	Wheel, 5" (40")	13,14
Side Frame, Passenger	22	Trucks, CNJ Diesel	12		
Side Frame, SD Type Diesel	16	Trucks, F & GP Type	13		
Side Frame, Switcher	14	Trucks, Freight	20		
Side Frame, Toy Box	21	Trucks, Passenger	22		
Side Frame, Trolley	17	Trucks, SD Type Diesel	16		
Signals	29	Trucks, Switcher	14		
Springs	13,14,20,22	Trucks, Toy Box Caboose	21		
Steps, Diesel	18	Trucks, Trolley	17		
Switches, Track	28				

On the following pages you will find locomotives that we have built for our customers. All are Custom Built and are powered by a battery operated, electric drive system. This provides a dependable drive, with the minimum in maintenance. Plug in a charger for recharging and you are ready to run again. No rope starters to pull on, no gasoline to purchase and store, less noise and vibration and smoother application of power. These are some of the benefits of an electric drive system. If you want another type of locomotive, let us know and we will be happy to give you a price. We will supply any parts of the locomotive, so you can do the rest yourself.

Due to the demand for our locomotives, there is usually a waiting list for our locomotives plus the construction time. Contact us in regard to the delivery schedule for your locomotive.



## CUSTOM LOCOMOTIVES

One of our additional services is to provide customers with custom built locomotives. Several examples of these locomotives are shown on the following pages. Pictured below is a Santa Fe 4-6-4, electrically powered and lettered Pennsylvania for the customer. It weighs 1500 pounds with batteries and is 12'6" in length. Detailed as shown, this locomotive is \$12,900.

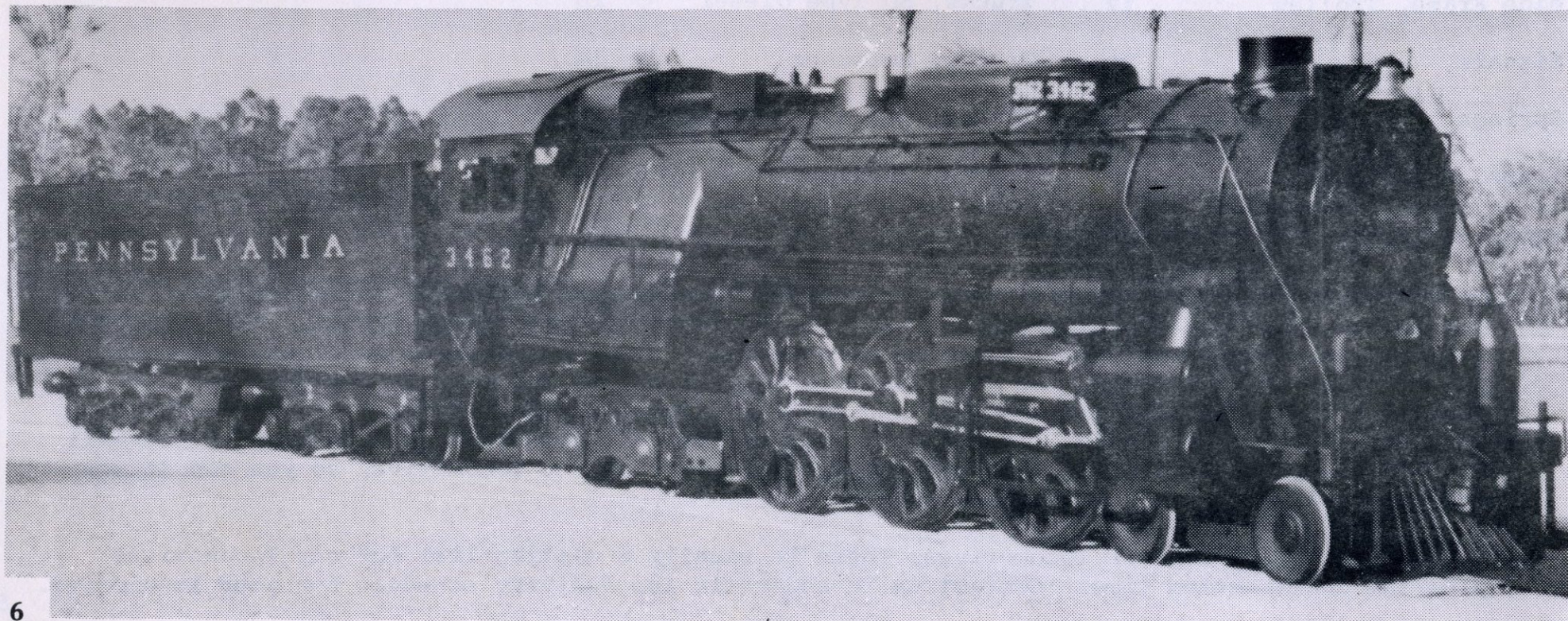
On the opposite page are four quite different locomotives. In the upper left corner is an FP-45 with 6 axles powered. This locomotive is \$5,600. On the upper right, a toy locomotive designed to run on 7½" gauge track. This locomotive is available for \$1,450. In the lower left picture, a NYC

S-1 electric. This locomotive is currently \$5,200. In the lower right picture we show an E-8. This locomotive is \$5,100.

The cover photo shows a super-detailed GP-40. This locomotive detailed as shown is \$5,900.

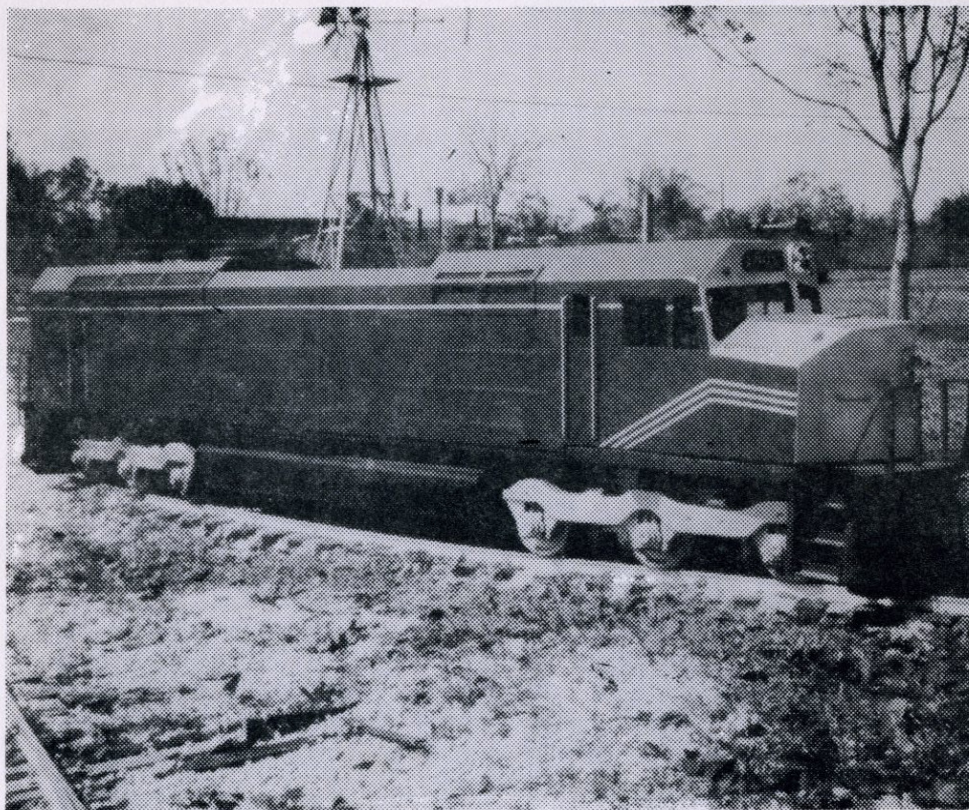
Shown on pages 8 & 9 is a GP-7. This locomotive is \$4,500. On pages 10 & 11 are F-7 type locomotives. These are available for \$4,500 per powered unit, and \$3,000 per non-powered unit.

We will build other types to your specifications. Please let us know what you want. Presently under consideration are a GG-1 electric and Alco PA-1 A & B unit diesels.

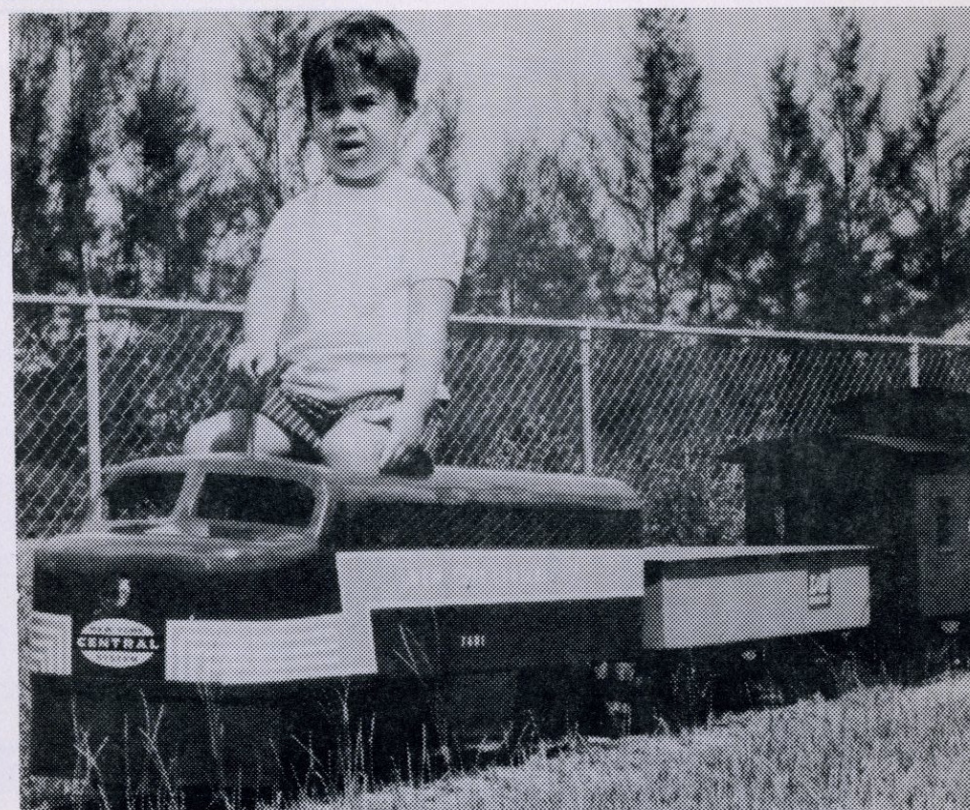
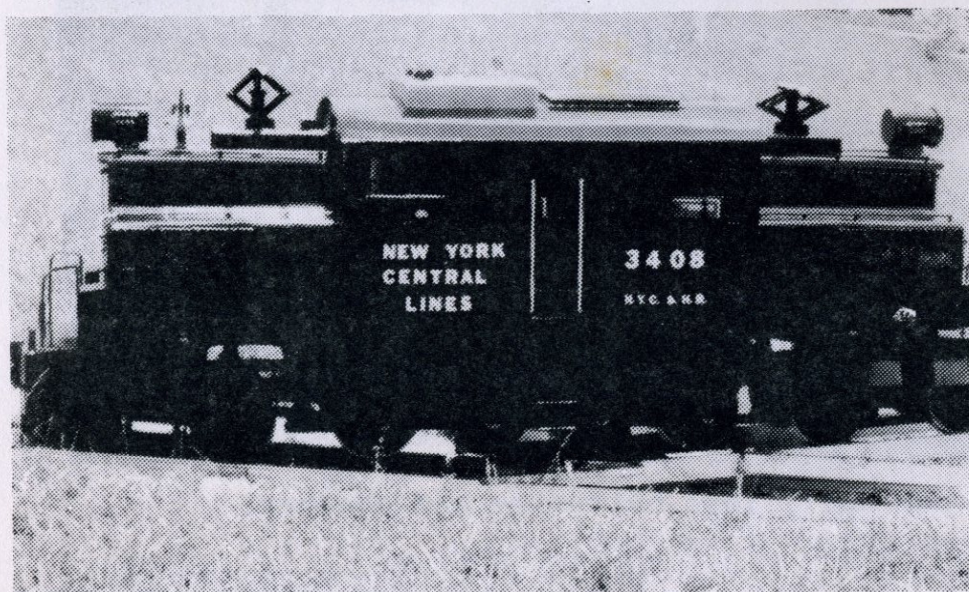




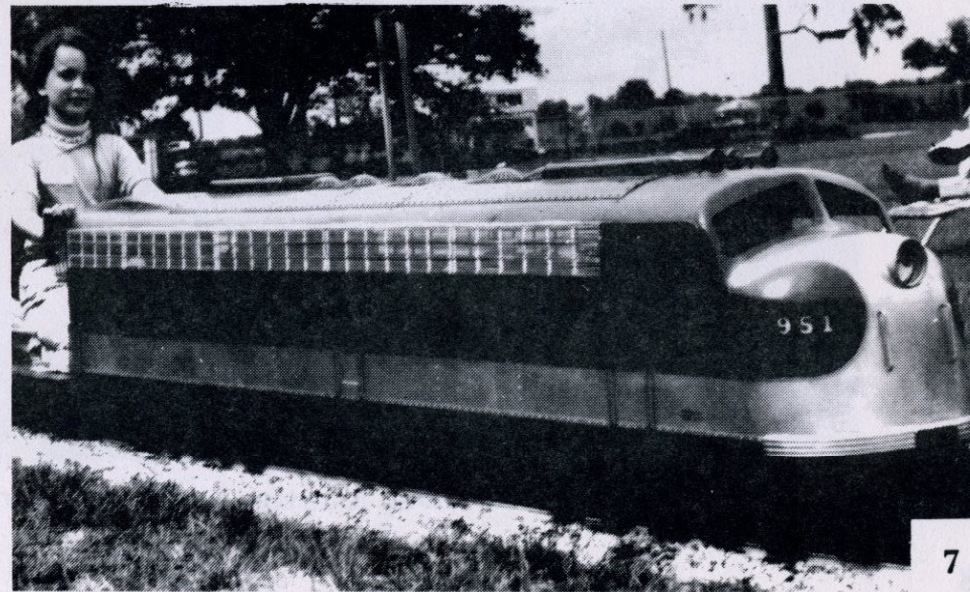
# CUSTOM LOCOMOTIVES



FP-45 above NEW YORK CENTRAL S-1 ELECTRIC below

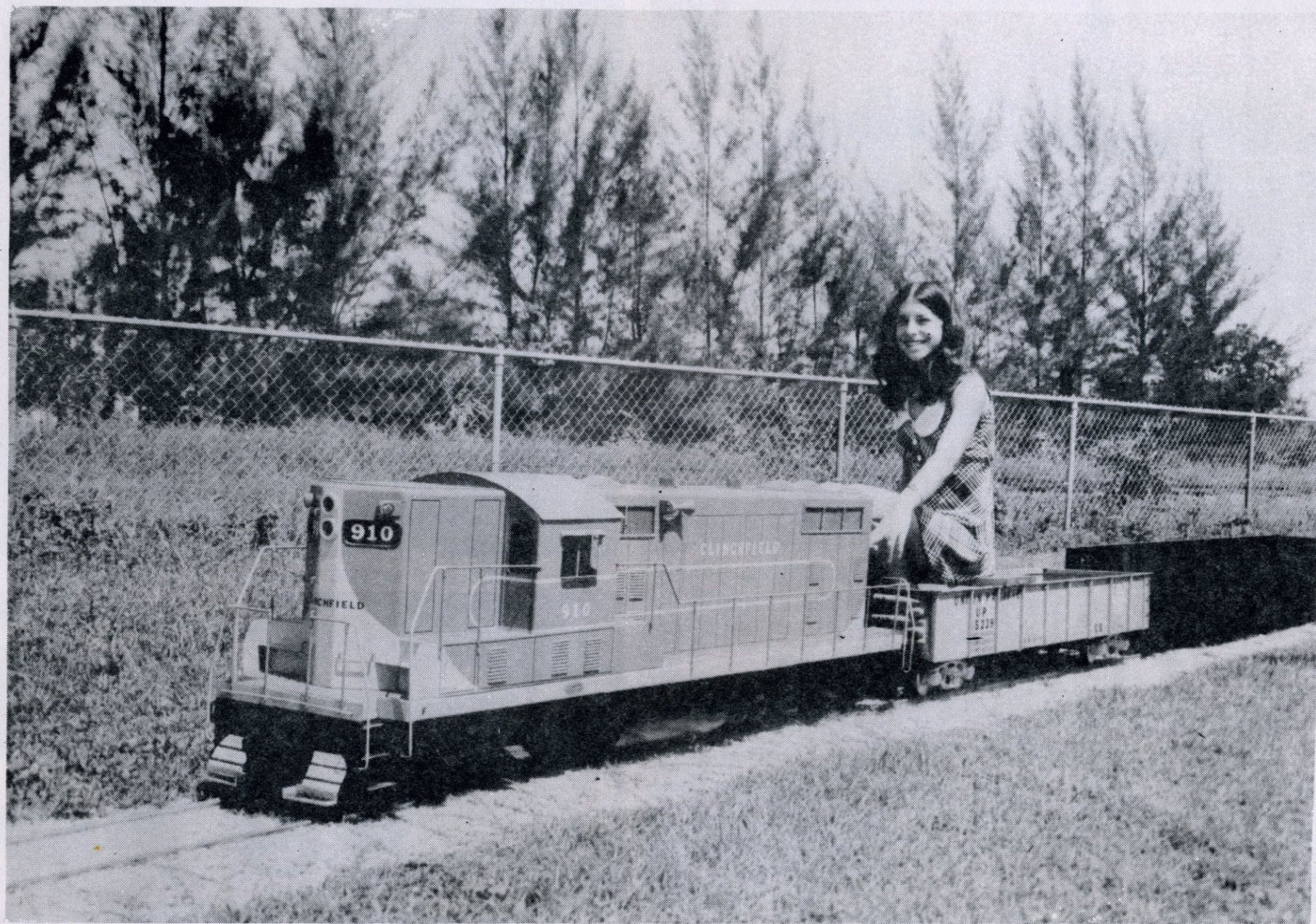


TOY LOCOMOTIVE above E-8 below





## GP-7 DIESEL LOCOMOTIVE



This locomotive, custom built - \$4500 per unit, less batteries and charger.



## GP-7 DIESEL LOCOMOTIVE



Delivery date - 3 to 6 months.

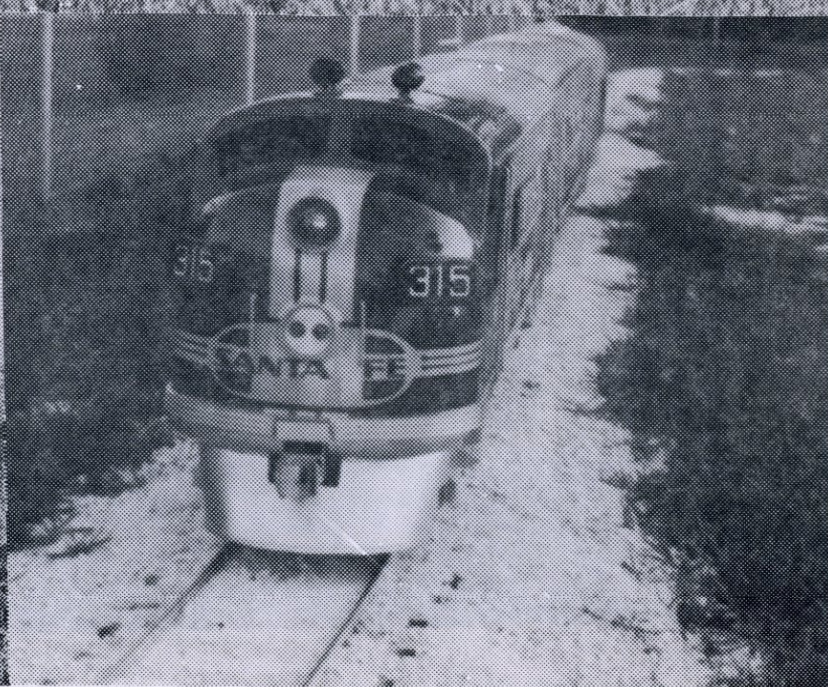
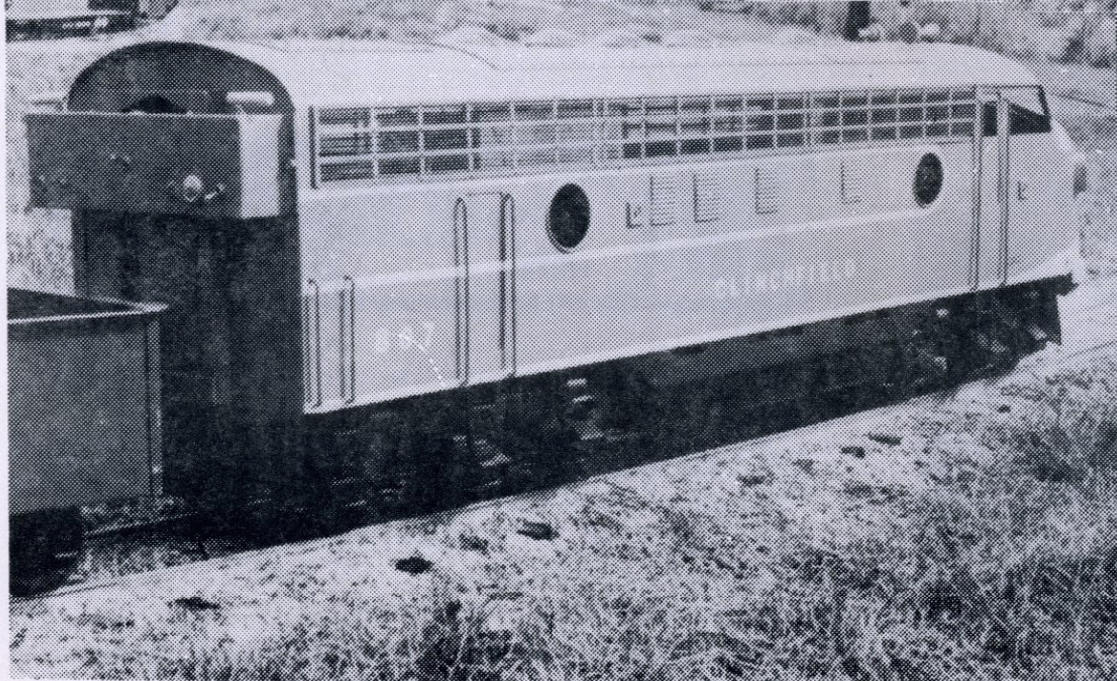
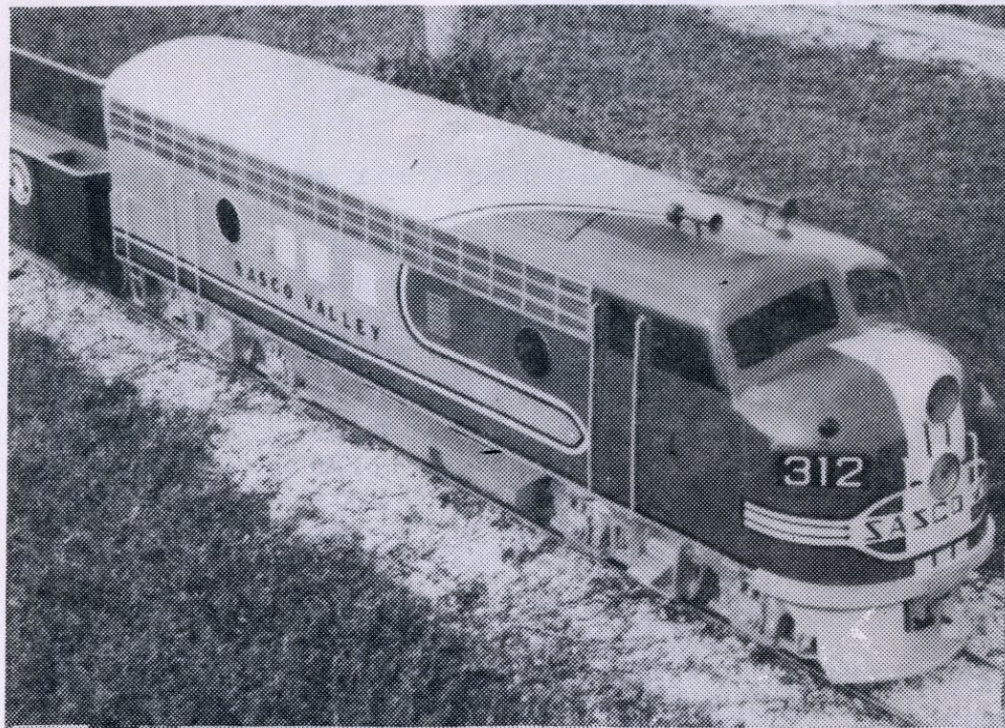




As shown in the photograph above, these units may be used with MU (Multiple Unit) control. This provides an easy method of running one locomotive or as many as desired, depending upon the power required. These custom built units are \$4500 each, and available after three to six months construction time.



## F-7 DIESEL LOCOMOTIVE





# C. N. J. DIESEL TRUCKS

These trucks are patterned after the C.N.J. Diesel trucks as used on their small 300 h.p. switcher #1000. The truck is unsprung, but equalized.

DESCRIPTION	WEIGHT POUNDS	MAT.	QUAN. REQ'D	ROUGH CASTING PRICE ea.	MACHINE WORK ONLY PRICE ea.
Side frame	12 (4)	Iron (Alum)	4	17.50	6.90
Bolster, Truck	4	Steel	2	5.75	3.30
Body Bolster	3	Iron	2	6.35	2.15
Axles, 5/8" stress proof steel	2	Steel	4	1.75	3.50
Wheels, 4½" dia. (36" scale)	3	Iron	8	4.75	6.60
Bearing, ball ½" I.D.D.C. sealed	1 oz.		8	2.65	

All rough castings, no axles or bearings

125.00 86 lbs. pr.

All rough castings, axles and bearings

155.00 94 lbs. pr.

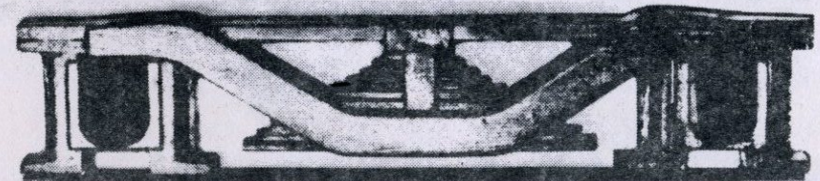
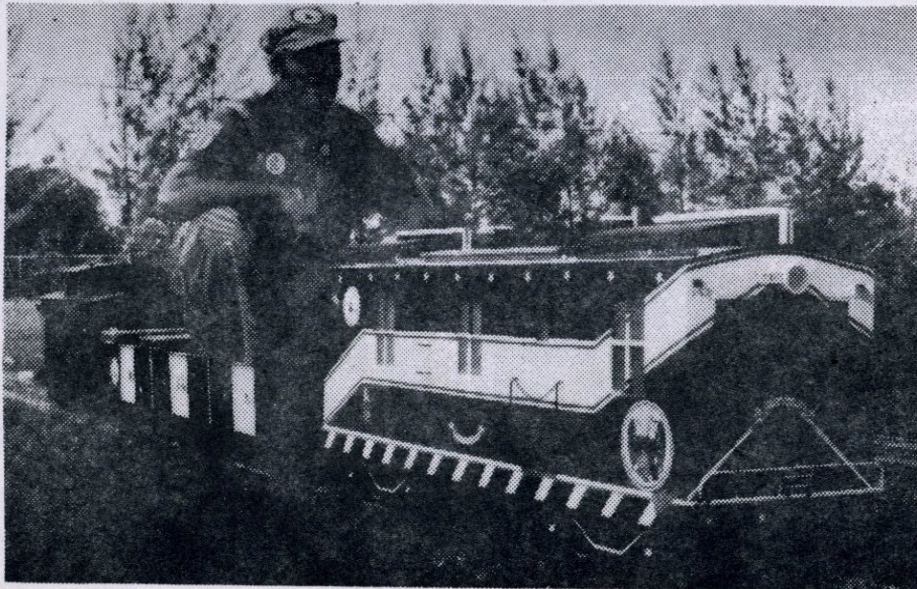
Pair of C.N.J. trucks, machined, assembled, painted

260.00 94 lbs. pr.

Pair of trucks with 4 motors and gearboxes

895.00 pr.

134 lbs.



Pictured above is our C.N.J. Truck.

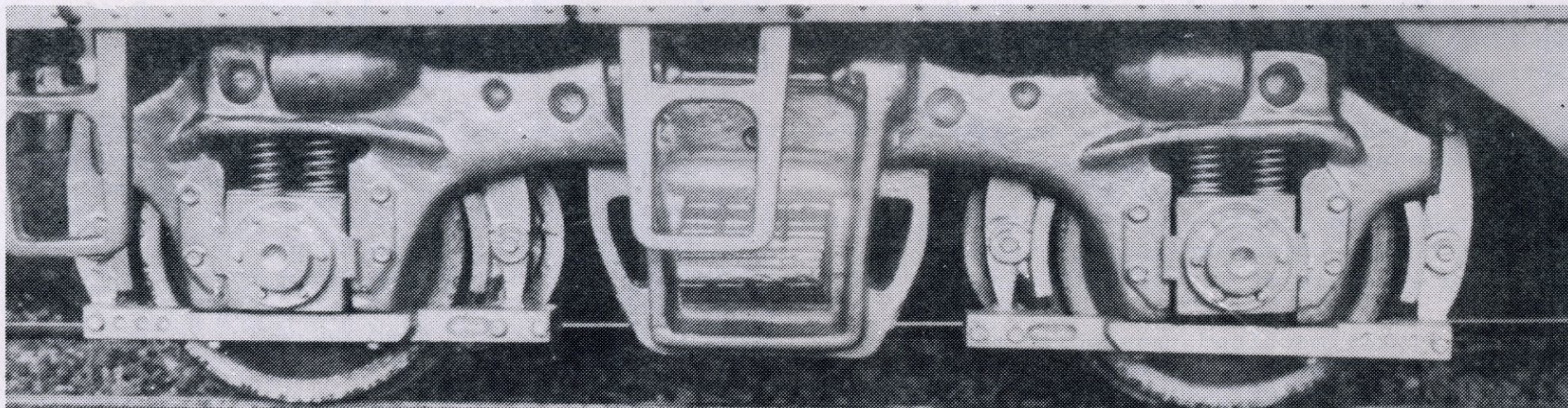
To the left is Bob Fink pictured with his C.N.J. Diesel, built using our C.N.J. Trucks.

Prices and specifications subject to change without notice.



# F / GP TYPE DIESEL TRUCKS

DESCRIPTION	WEIGHT POUNDS	MATERIAL	QUANTITY REQUIRED	STOCK OR ROUGH CASTING PRICE EA.	MACHINE WORK ONLY PRICE EA.
Truck, for F or GP units - 13 $\frac{1}{2}$ " wheel base (9'0" Scale)					
Side Frame	5	Aluminum	4	22.00	10.20
Bolster, Truck	1 $\frac{1}{2}$	Aluminum	2	5.75	3.40
Journal Box	3/4	Aluminum	8	3.00	2.00
End Pieces	$\frac{1}{2}$	Aluminum	4	1.75	2.55
Axles, 5/8" stress proof	2	Steel	4	1.75	3.45
Wheels, 5" dia. (40" scale)	3 $\frac{1}{2}$	Iron	8	5.50	7.15
Bearing, Ball $\frac{1}{2}$ " ID DC sealed	1 oz.		8	2.65	
Springs, 5/8" x 1" Med. Press	$\frac{1}{2}$ oz.	Steel	16	1.00	
Brake Rigging	$\frac{1}{4}$	Aluminum	8	5.00	5.50
All rough castings and springs, no axles or bearings				\$230.00	60 lbs.
All rough castings with springs, axles and bearings				\$255.00	68 lbs.
Pair of Diesel Trucks, machined, assembled and painted (unpowered)				\$475.00	68 lbs.
Pair of trucks with 4 motors and gearboxes				\$1095.00	108 lbs.





## EMD SWITCHER TRUCKS

Our switcher trucks are available with three different construction methods. The best, and our "standard" version is with a Heli-arc assembly of the truck, including both sideframes, bolster and end pieces. The welding is done in a jig, to insure squareness. We suggest milling the journal slots beforehand, as it is difficult to clamp the entire assembly in your mill. We can also supply

our standard freight bolster for a bolt together assembly as shown or a steel fabricated bolster with pivot for more flexible trucks for extremely rough track. Journal boxes require milling, however, we have an optional journal that can be installed without milling.

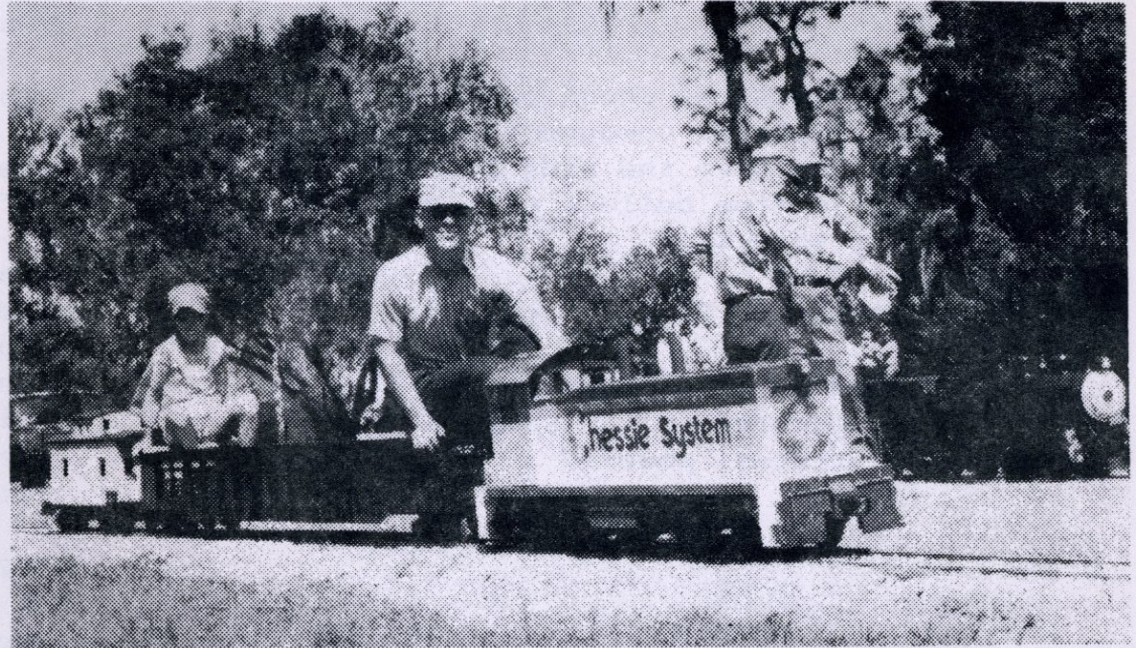
These trucks are patterned after the type most used on yard switcher. The trucks feature working equalizer bars spanning between each journal.

DESCRIPTION	WEIGHT POUNDS	MATERIAL	QUANTITY REQUIRED	STOCK OR ROUGH CASTING PRICE EA.	MACHINE WORK ONLY PRICE EA.
Side Frame	3	Aluminum	4	12.00	10.45
Equalizer Bars	1½	Aluminum	4 pr.	6.00 pr.	7.70 pr.
Bolster, Truck	1½	Aluminum	2	5.75	5.50
Journal Box	1	Aluminum	8	2.50	3.85 *
End Pieces	½	Aluminum	4	1.75	
Wheel, 5" Dia. (40" scale)	3½	Iron	8	5.50	7.15
Axles, 5/8" stress proof	2	Steel	4	1.75	3.45
Bearing, ball ½" ID DC sealed	1 oz.		8	2.65	
Springs, 1 x 2" Med. Pressure	1 oz.	Steel	8	1.90	
All rough castings and springs, no axles or bearings				\$165.00 pr.	* \$1.65 each
Above with axles and bearings				64 lbs. -- \$195.00 pr.	if bought milled
Side frames and journals need milling for assembly					
Milling charge only, per pair of trucks				\$ 45.00 pr.	
Heli-arc assembly of trucks with aluminum bolster				\$ 30.00 pr.	
Pair of trucks machined, assembled and painted				\$380.00 pr.	
Pair of trucks with 4 motors & gearbox				\$1015.00 pr.	
Trucks are also available in 7¼" gauge					

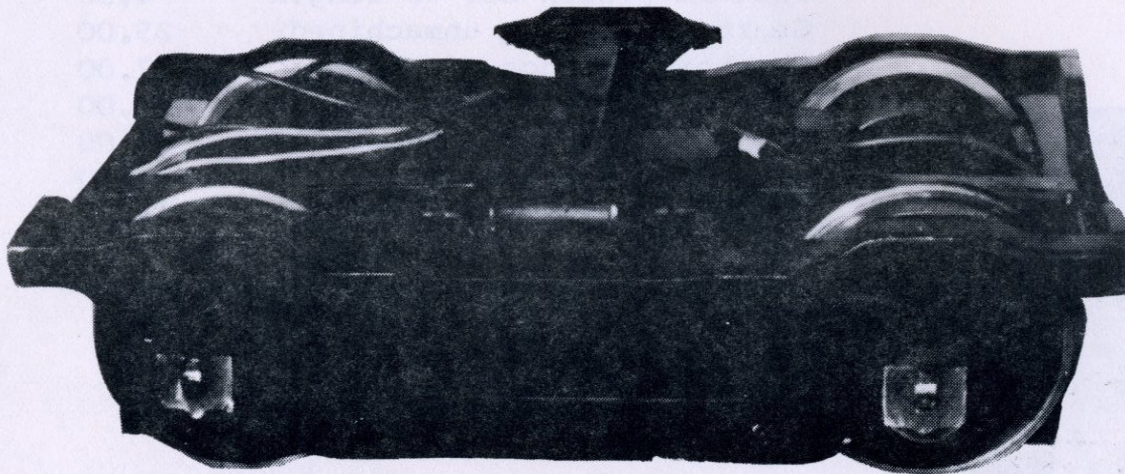


## EMD SWITCHER TRUCKS

For orders involving machining and total is over \$100, 50% with order and balance before order is shipped.



An example of a switcher built with our switcher trucks, Don Nichols with his C & O switcher at Maitland, Fla.

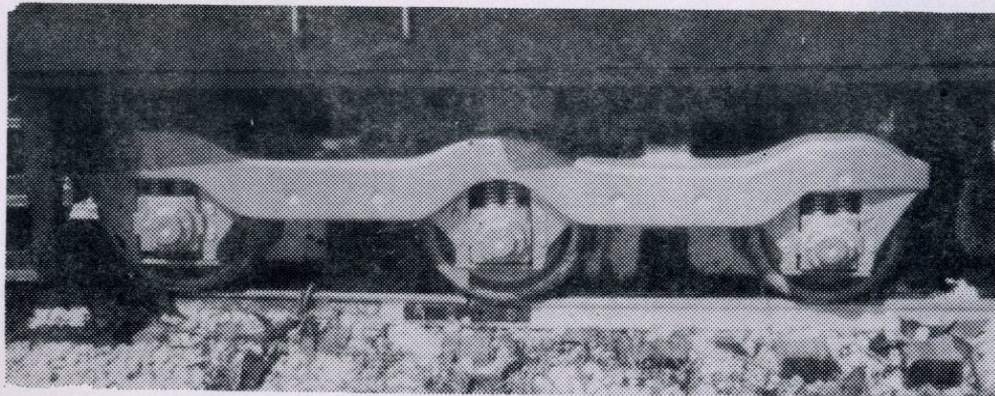




## SD TYPE TRUCKS

SD Type trucks as shown below are not available in component parts. However, we have the side frames and will custom build a pair of complete trucks.

Side frames (8 lbs)	\$45.00
Assembled pair of trucks unpowered	\$575.00
Pair of trucks, powered	\$1525.00



## GEARBOX DRIVE SYSTEM

Our Diesel trucks are powered by 24 volt, .55 H.P. surplus aircraft type motors. They are mounted like the prototype with a single reduction spur gear drive. The gear ratio is 9:1 providing a top speed of 90 mph with train.

Construction of the gearbox is of a bronze casting. Due to the lack of space for ball bearings, bronze bearings were used for the axle bearings. The pinion gear is of stem construction requiring a 3/8" hole to be drilled in the armature.

72 tooth axle gear	12.75
8 tooth motor pinion gear	11.50
Motor-unmodified	29.00
Motor-modified for reversing	40.00
Motor-modified & machined	43.00
Drill motor for pinion	8.00
Install pinion cut to length	4.50
Gearbox castings, unmachined	25.00
Gearbox castings, machined	47.00
Mach. axle gear & mount	8.00
Remove & reinstall wheels	11.00
Screws, sealing compound	2.50
Assemble gearbox assembly	14.00

Gearbox and motor, completely assembled  
\$ 182.50 with 36" wheels  
\$ 185.00 with 40" wheels



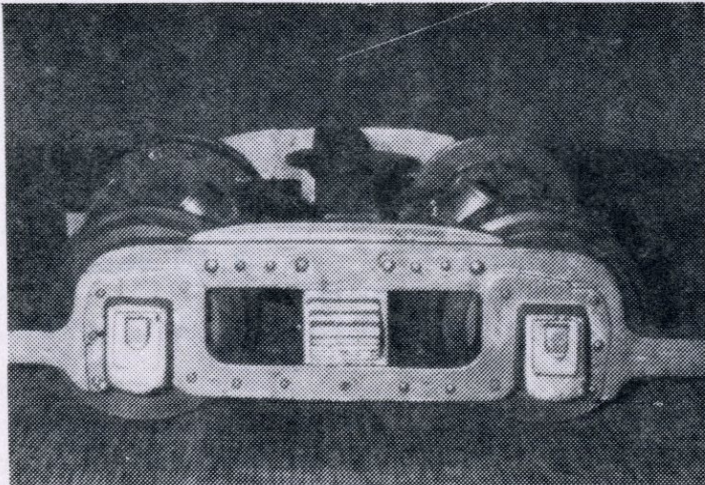
## TROLLEY TRUCKS

Shown below are two Trolley type side frames that we have available. We do not have the complete truck at this time. However, if you are interested in building up a Trolley Truck, our Toy Box caboose bolster may be used. The wheels shown in the photograph are Nelson Gray's 1" scale diesel wheels which make a 28" trolley wheel. We do not have these available. The trucks are also suitable for use with our 33" wheel which can be cut down to approximately 30". Side frames are listed below. Write for details as to prices for complete trucks. Both trucks have a 4'4" wheel base.

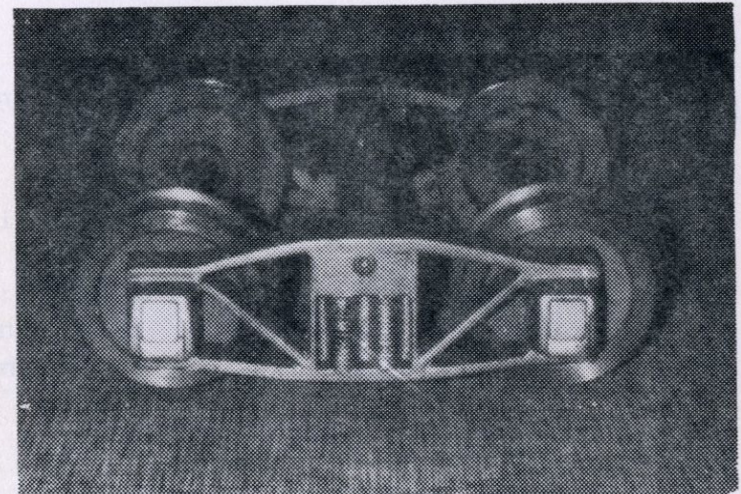
3½" wheel

4.00

Trolley Truck side frame 8.00 ea.  
Assembled pair trucks \$170.00

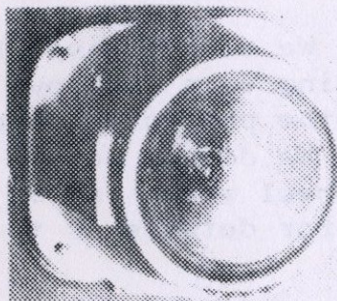


Trolley Arch Bar side frame 6.50 ea.  
Assembled pair trucks \$165.00





## DIESEL PARTS



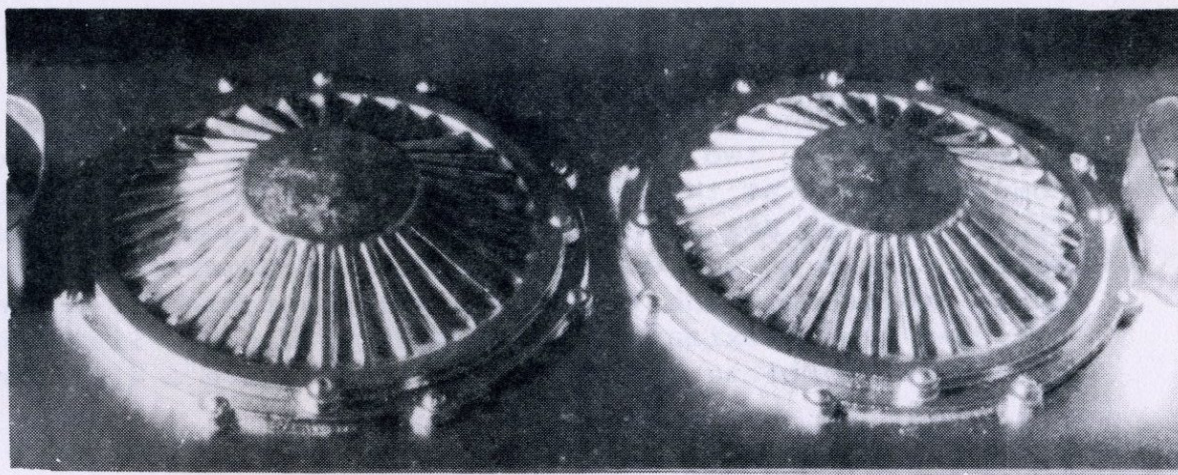
Headlight, GM Diesel Switcher

Lamp for above, 12v, 32 cp 2.50 each

Headlight, complete with lamp,

4.50 rough casting

7.00 machined  
assembled & painted

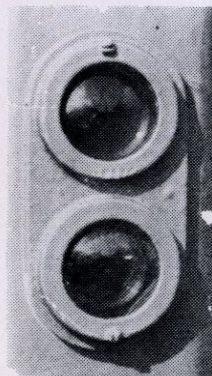


Roof Vents, GP-7 or F unit type

5.95 rough casting

Air Tanks, GP-7 type

5.75 rough casting



Diesel steps, as shown on our F-7 on page 19  
\$2.50 ea.

Headlight, GM GP type Diesel

Lamp for above, 12v, 32 cp (2 needed)

.75 rough casting

2.50 each

NOTE: Above lamps require external sockets  
which are not supplied. Sockets available  
at any auto parts store.



## DIESEL BODIES

For those wishing to build a diesel, but lacking a complete sheet metal working and welding shop, we offer the following:

GP-7  
Frame, prime painted without railings,  
all welded construction \$700  
Body, 2 sections, cab and short hood  
and long hood, all welded of 16 ga.  
prime painted without fittings \$700

F-7  
Frame, prime painted, all welded  
construction \$450  
Body, 1 piece, all welded with  
1 headlight, without grills or  
other fittings, prime painted \$950

These units are custom built. Other types of diesels will be built, if desired.  
Write for quote.

Prices and specifications subject to change without notice.



A fine example of an F unit type body as built by one of our customers is this F.E.C. locomotive by Dick Beall.



# FREIGHT TRUCKS

DESCRIPTION	WEIGHT POUNDS	MATERIAL	QUANTITY REQUIRED	STOCK OR ROUGH CASTING PRICE EA.	MACHINE WORK ONLY PRICE EA.
AAR Truck, Bettendorf Type					
Bolster	4	Iron	2	6.75	5.10
Body Bolster	2 $\frac{1}{2}$	Iron	2	6.75	3.05
Side Frame	3 $\frac{3}{4}$	Iron	4	6.00	5.50
Wheel 4 $\frac{1}{8}$ " Dia.	3 $\frac{1}{4}$	Iron	8	4.25	6.05
Axle, 5/8" Stress Proof steel	2	Steel	4	1.75	3.45
Springs, 5/8" x 1" MP	$\frac{1}{2}$ oz.	Steel	16	.85	
Bearing, Ball $\frac{1}{2}$ " ID DC sealed	1 oz.		8	2.65	

All rough castings and springs, no axles or bearings

\$ 95.00

44 lbs.

All rough castings, springs, axles and bearings

\$122.50

50 lbs.

Pair of Freight Trucks, machined and unassembled

\$215.00

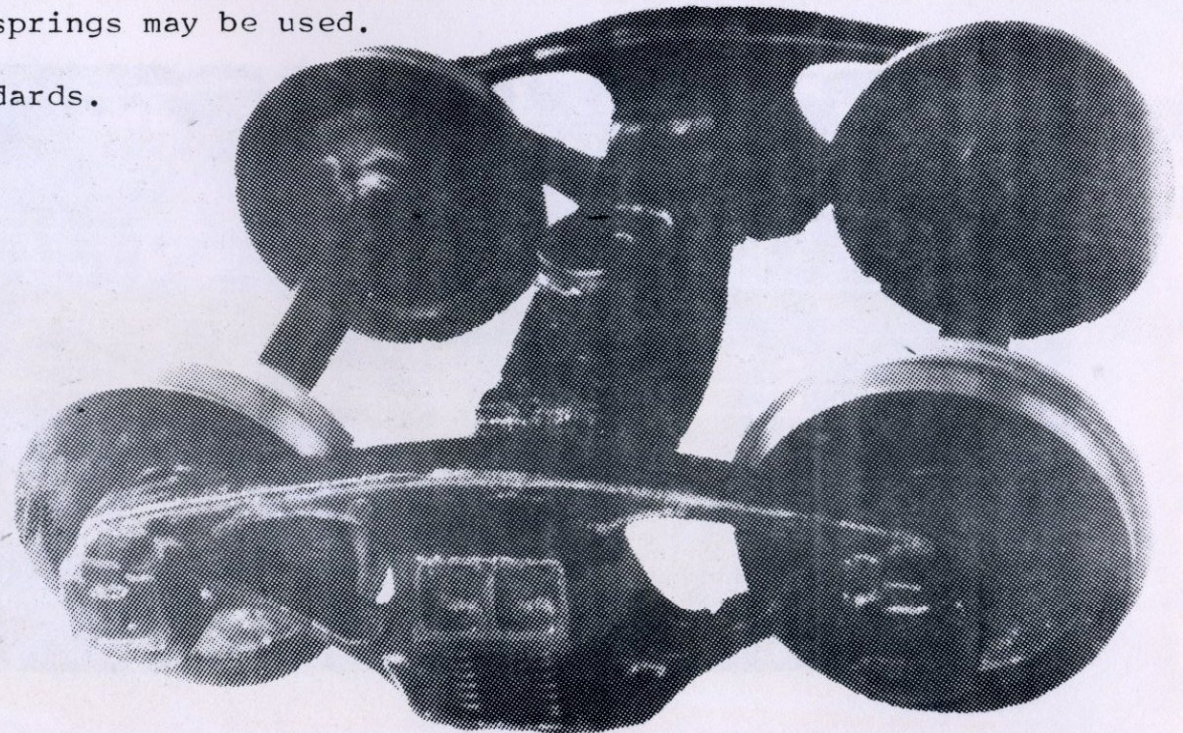
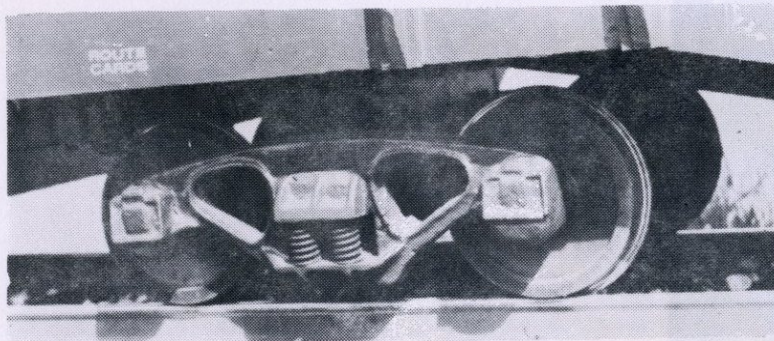
50 lbs.

Pair of Freight Trucks, machined, assembled and painted

\$225.00

For heavy cars or tenders, 4 additional springs may be used.

Machined wheels are supplied to BLS Standards.





## TOY BOX CABOOSE TRUCKS

These trucks have their sideframes cast from the plastic sideframes as found on the toybox caboose, with the permission of the manufacturer of the caboose. They are suggested for use with the caboose as they have a much

shorter wheelbase ( $6\frac{1}{4}$ " as compared to our freight trucks which are  $8\frac{1}{4}$ ") and look right with the short caboose. They are also suitable for short cars of other types.

DESCRIPTION	WEIGHT POUNDS	MATERIAL	QUANTITY REQUIRED	STOCK OR ROUGH CASTING PRICE EA.	MACHINE WORK ONLY PRICE EACH
Sideframe	$1\frac{1}{4}$	Aluminum	4	5.50	4.15
Bolster	1	Steel	2	4.50	2.75
Wheel, 4 1/8" Dia.	3	Iron	8	4.25	6.15
Axle, 5/8" Stress Proof Steel	2	Steel	4	1.75	3.45
Bearing, Sealed Ball, $\frac{1}{2}$ " ID	1 oz.		8	2.65	

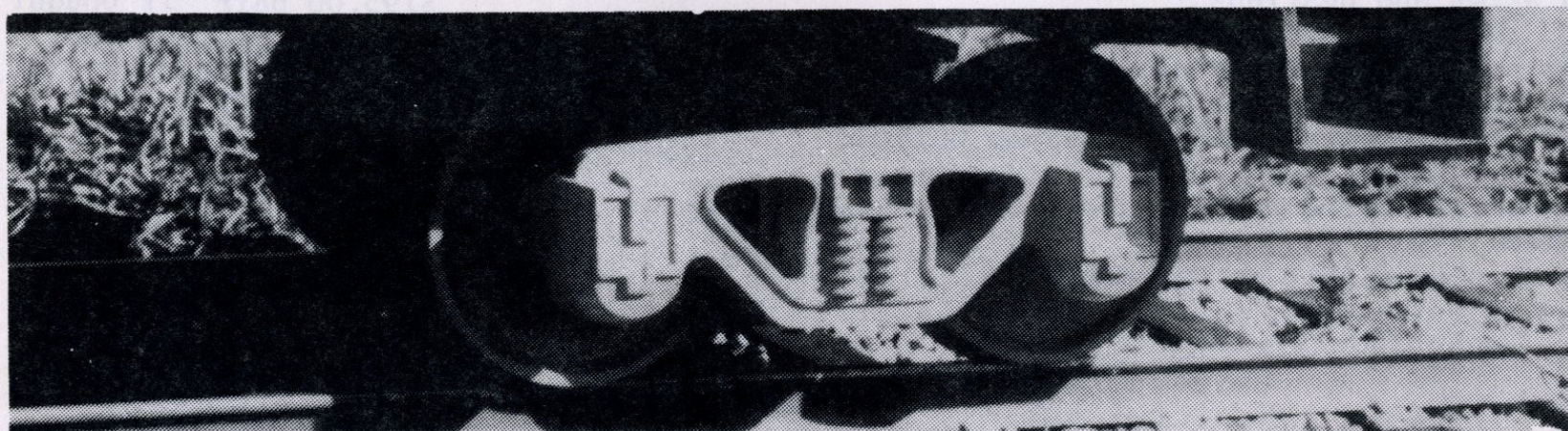
All rough castings, no axles or bearings      \$60 pair      34 pounds

All rough castings, with axles and bearings      \$85 pair      40 pounds

Pair of trucks, machined and unassembled      \$170 pair      40 pounds

Pair of trucks, machined, assembled, and painted      \$180 pair      40 pounds

Machined wheels are supplied to BLS standards. Trucks may be made for  $7\frac{1}{2}$ " or  $7\frac{1}{4}$ " gauge. If not specified,  $7\frac{1}{2}$ " gauge will be supplied.





# PASSENGER TRUCK

Our passenger trucks are available with three different construction methods. The best, and our "standard" version is with a Heli-Arc assembly of the truck, including both sideframes, bolster and end pieces. The welding is done in a jig, to insure squareness. We suggest milling the journal slots beforehand, as it is difficult to clamp the entire assembly in your mill. We can also supply

our standard freight bolster for a bolt together assembly as shown or a steel fabricated bolster with pivot for more flexible trucks for extremely rough track. Journal boxes require milling, however, we have an optional journal that can be installed without milling.

DESCRIPTION	WEIGHT POUNDS	MATERIAL	QUANTITY REQUIRED	STOCK OR ROUGH CASTING PRICE EA.	MACHINE WORK ONLY PRICE EA.
Side Frame	3	Aluminum	4	12.00	10.45
Equalizer Bars	1½	Aluminum	4 pr.	6.00	7.70 pr.
Bolster, Truck	4	Iron	2	5.75	5.50
Journal Box	1	Aluminum	8	2.50	3.85 *
End Pieces	½	Aluminum	4	1.75	
Wheel, 4½" dia. (36")	3	Iron	8	4.75	6.60
Axle, 5/8" stress proof	2	Steel	4	1.75	3.45
Bearing, Ball ½" ID	1		8	2.65	
Springs, 1 x 1½" MP	2	Steel	8	1.90	

All rough castings and springs, no axles or bearings  
Above with axles and bearings

\$170.00 pair \* \$1.65 each  
\$195.00 pair if bought  
milled.

Side frames and journals need milling for assembly  
Milling charge only, per pair of trucks  
Heli-arc assembly of trucks with aluminum bolster

\$ 45.00 pr.  
\$ 35.00 pr.

Pair of trucks assembled and painted (specify aluminum, gloss or flat black)

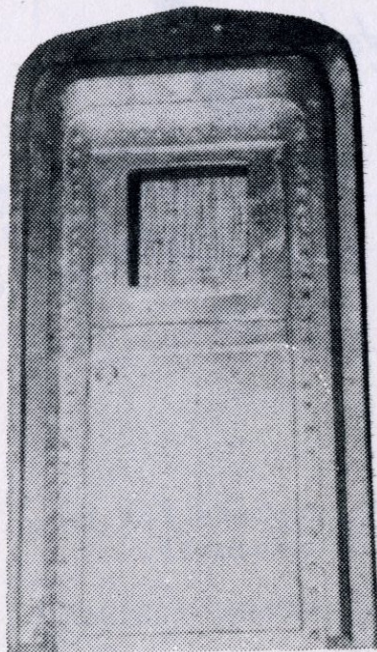
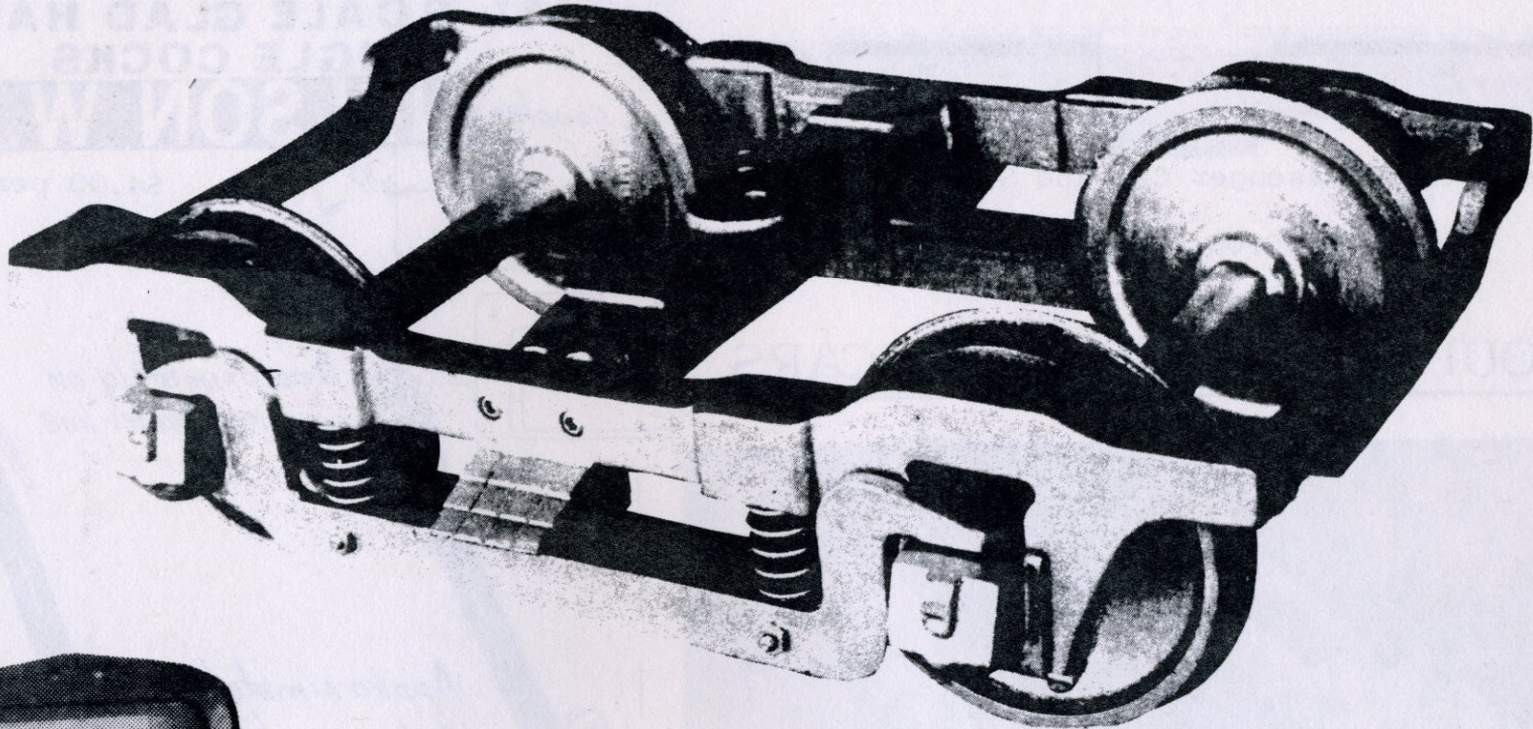
\$380.00 pr.

Trucks are also available in 7¼" gauge

58 lbs.



## PASSENGER TRUCK



For orders involving machining and total is over \$100, 50% with order and balance before order is shipped.

End Door as used on our Passenger Cars. Aluminum Casting.

Price \$8.25 ea.



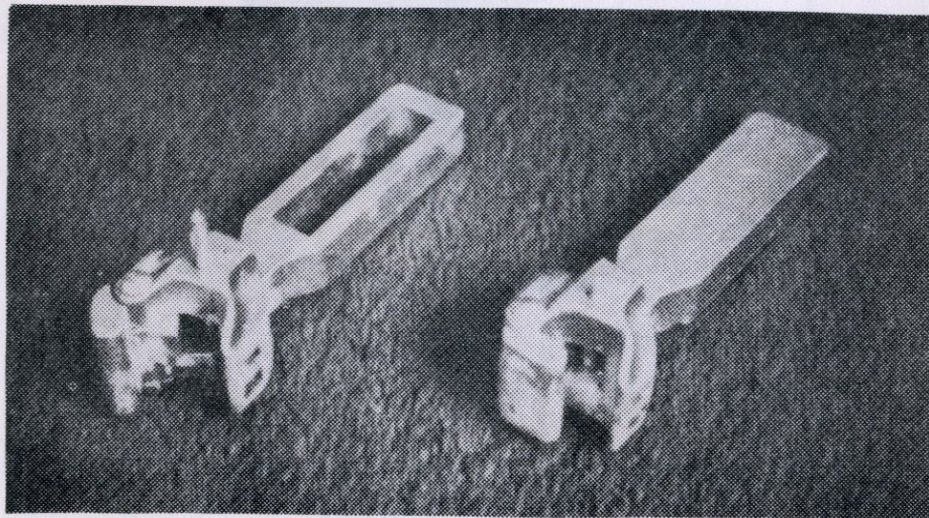
## FREIGHT CAR PARTS



Freight or Passenger Car End Sill (Iron)

Price \$5.00 3 lbs.

## COUPLERS FOR YOUR CARS



Complete kit

Pair couplers & Springs \$11.50

Pair solid shank couplers \$10.50

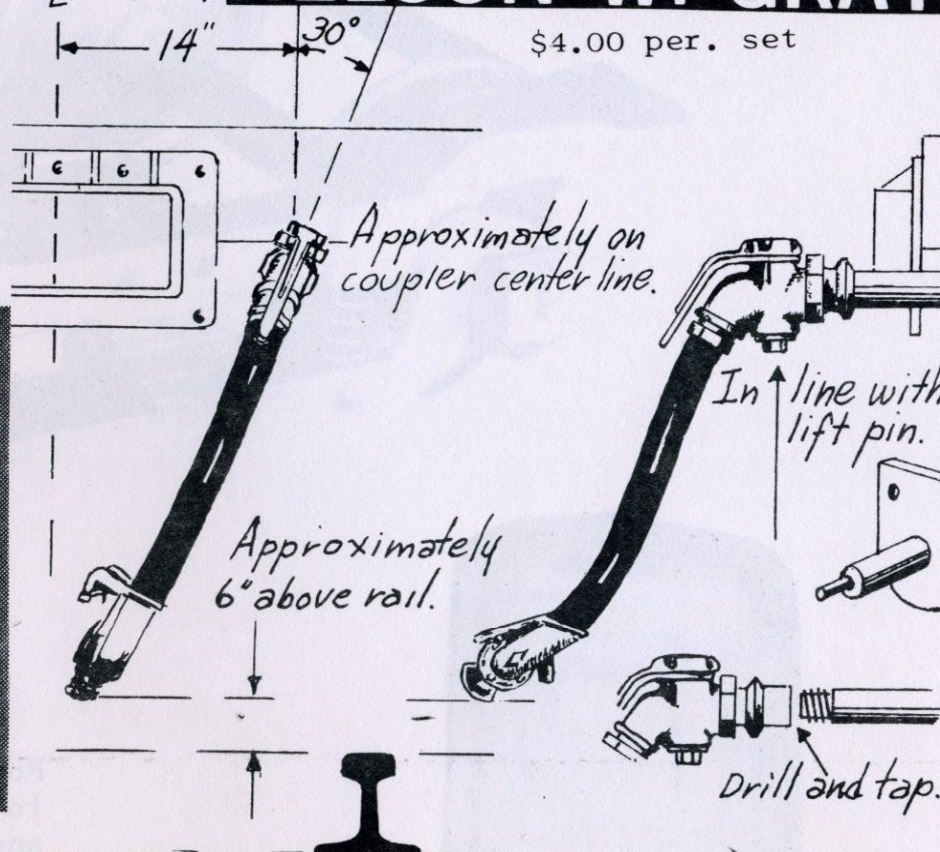
Replacement knuckles

\$1.00 ea.

**K  
M  
P**

## 1½" SCALE GLAD HANDS & ANGLE COCKS

coupler **NELSON W. GRAY**



\$4.00 per. set

We will assemble KMP couplers for you.  
Add \$5.00 per pair for assembly.

\*\* NEW ITEM BRONZE COUPLERS \$19.50  
MACHINING 6.00  
(solid shank only)



## CUSTOM BUILT PASSENGER CARS

We will Custom Build almost any type of car that you can think of. On this page are examples of passenger cars that we have built and on the next page are some of the freight cars. Let us know what you want and we will be glad to let you know the cost. Prices of cars shown on these pages are as follows;

Observation Car, lighted, removable roof,  
4 inside seats, stainless steel \$2,950.00

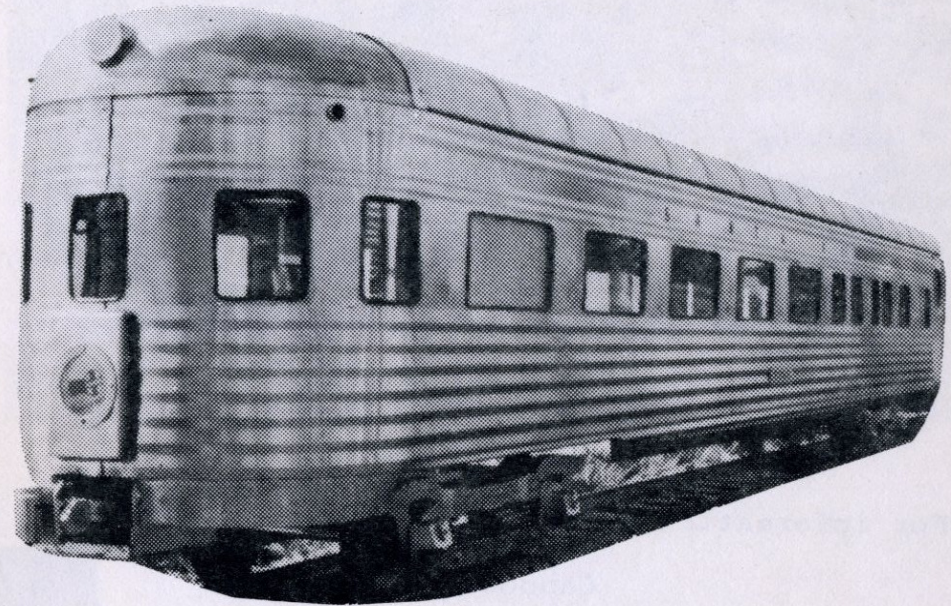
Coach, removable roof, 4 inside seats,  
aluminum construction \$2,100.00

Observation Car, standard type with end  
railing, 4 inside seats \$1,750.00

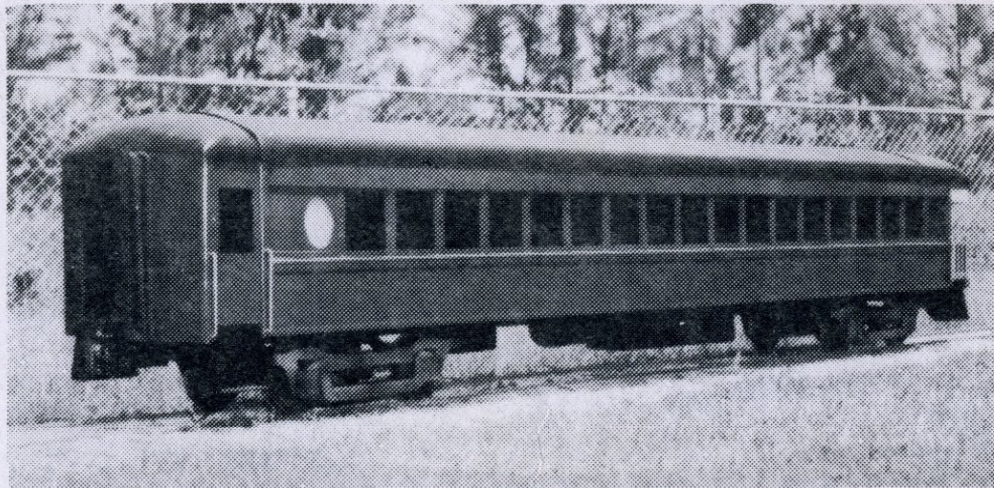
Box car, 40', removable roof \$925.00

Tank car, 8,000 gallon \$775.00

Caboose, steel, lighted \$1,475.00



Observation Car, stainless steel



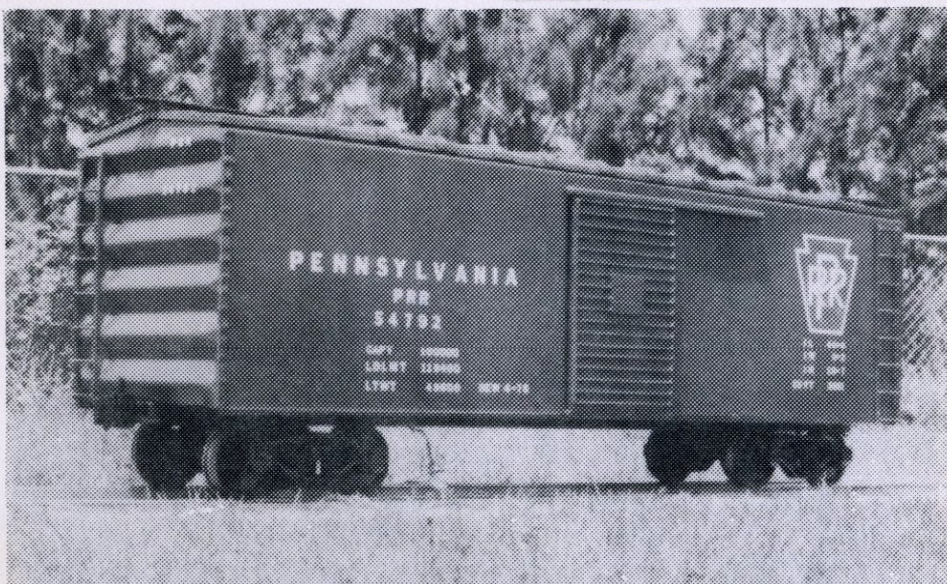
Observation car, standard



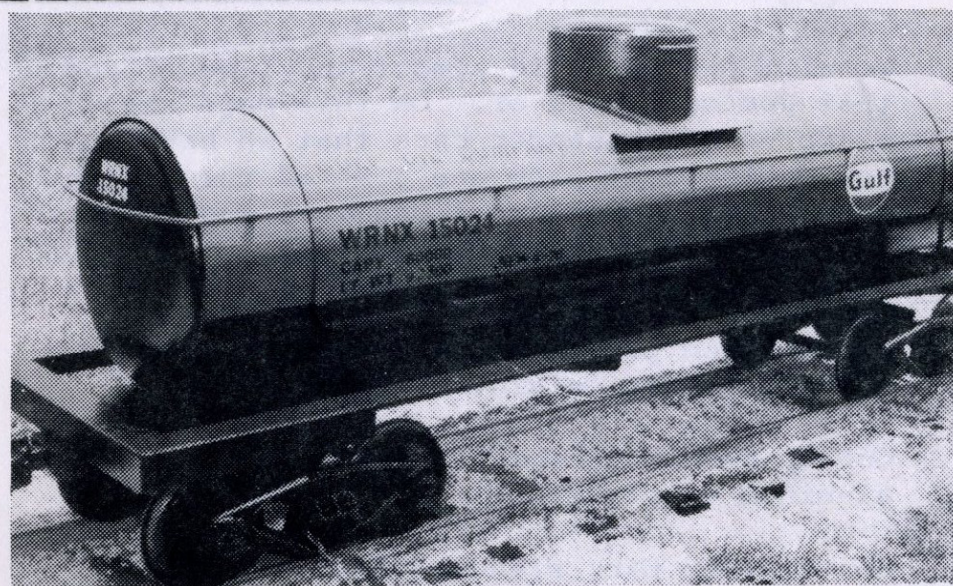
Coach, aluminum



## CUSTOM BUILT FREIGHT CARS



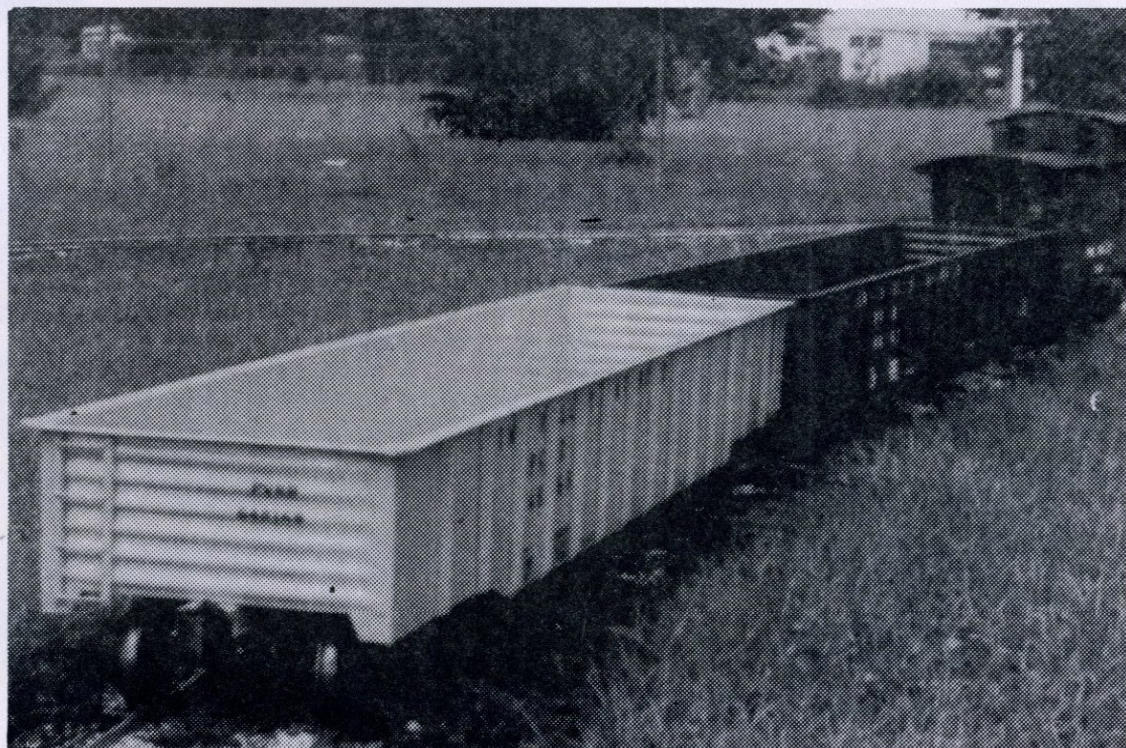
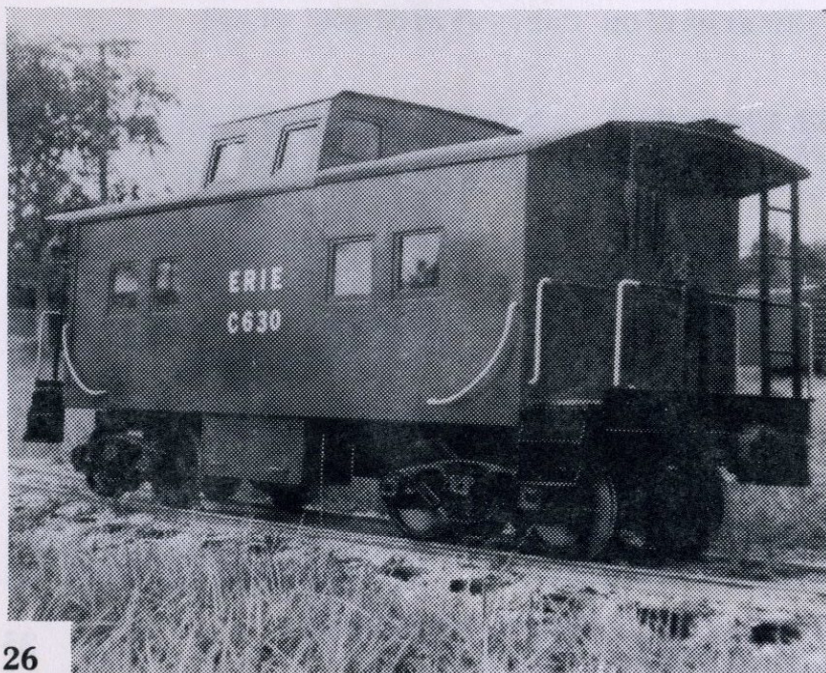
Box Car



Tank Car

For information as to Custom Built freight cars, please see preceeding page.

Caboose



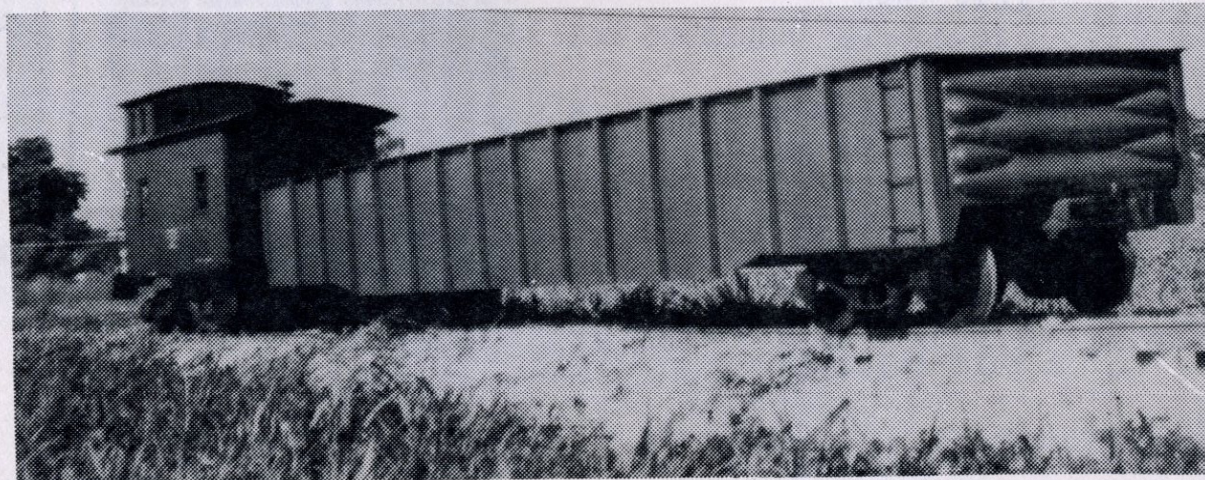


## GONDOLAS

These cars are available in all lengths, ready to use, just add trucks and couplers. Truck bolsters supplied with the car are for our trucks. If other trucks are to be used, either send trucks and we will mount at no charge or send a drawing as to bolster arrangement and height.

	40 ft. scale (60")	50 ft. scale (75")
Basic body with prime paint	\$220.00	\$270.00
with vinyl floor mat	\$227.50	\$280.00
with 4 ladders, & mat	\$255.00	\$305.00
finish paint & all above (1 color)	\$275.00	\$325.00
road lettering & above	\$295.00	\$345.00
lettering, dimensional data and above	\$310.00	\$370.00
	80 lbs.	110 lbs.

For car with trucks & couplers installed add \$225.00 to above prices.





# TRACK SUPPLIES

## TRACK SWITCHES & CROSSINGS

These custom made switches and crossings will be made with any type of rail, but the rail is included in the price if our rail is used. If wanted with other types of rail, you either supply the rail, or pay its cost. Our crossings feature Helicarc welded construction. They can be built to any desired angle.



RAIL: Extruded Aluminum  
1" high, send 50¢ for  
sample. Stocked in 20  
ft. length.

40¢ a foot.

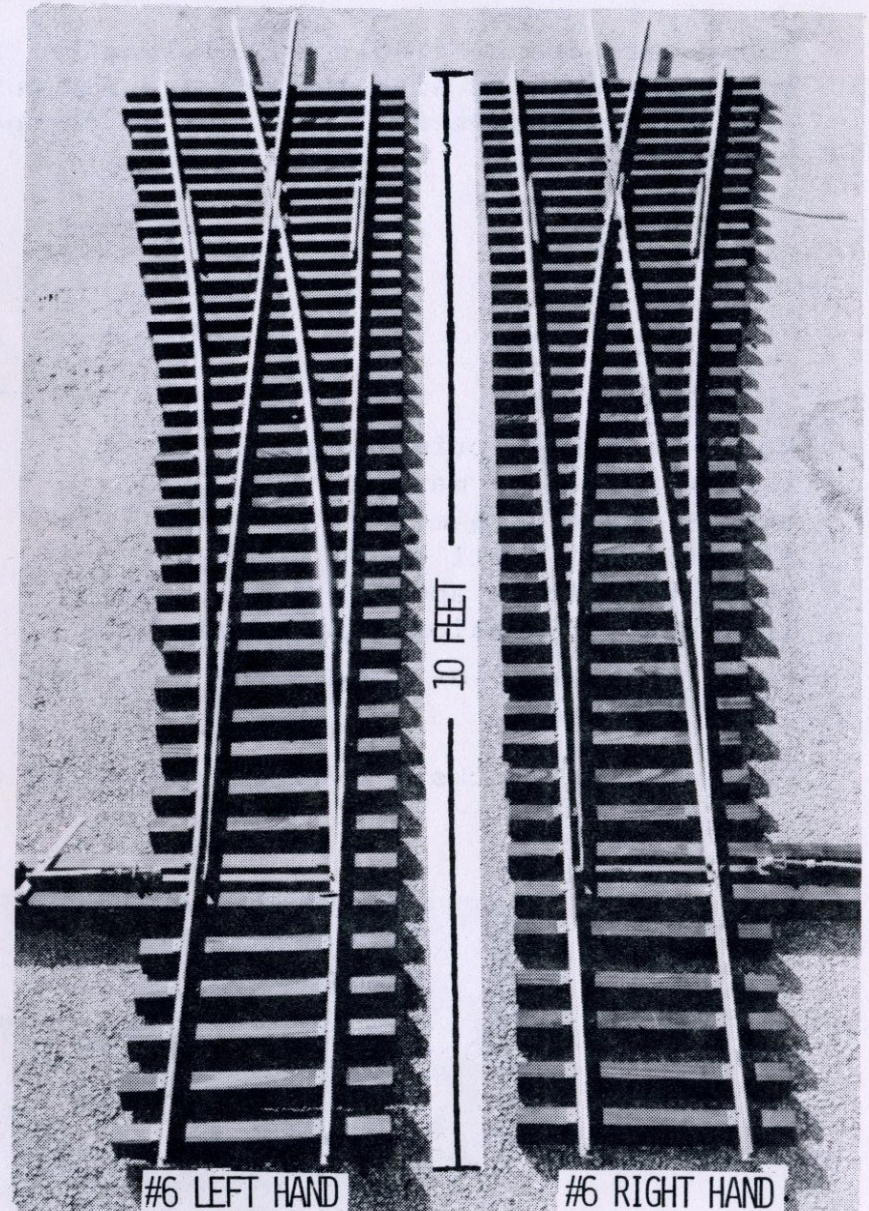
### SWITCH PRICES:

#4 Turnout	\$275.00 ea.
#5 Turnout	\$300.00 ea.
#8 Turnout	\$325.00 ea.

### CROSSING PRICES:

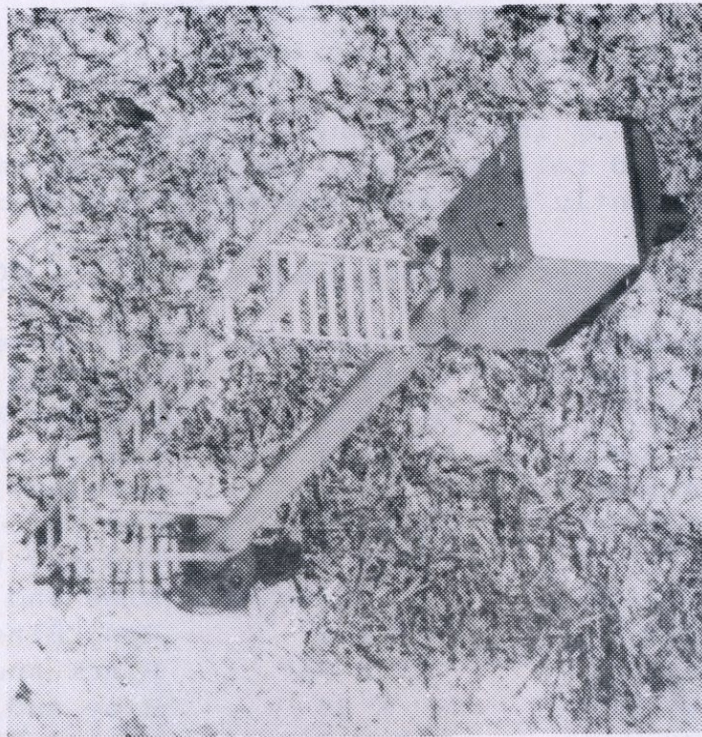
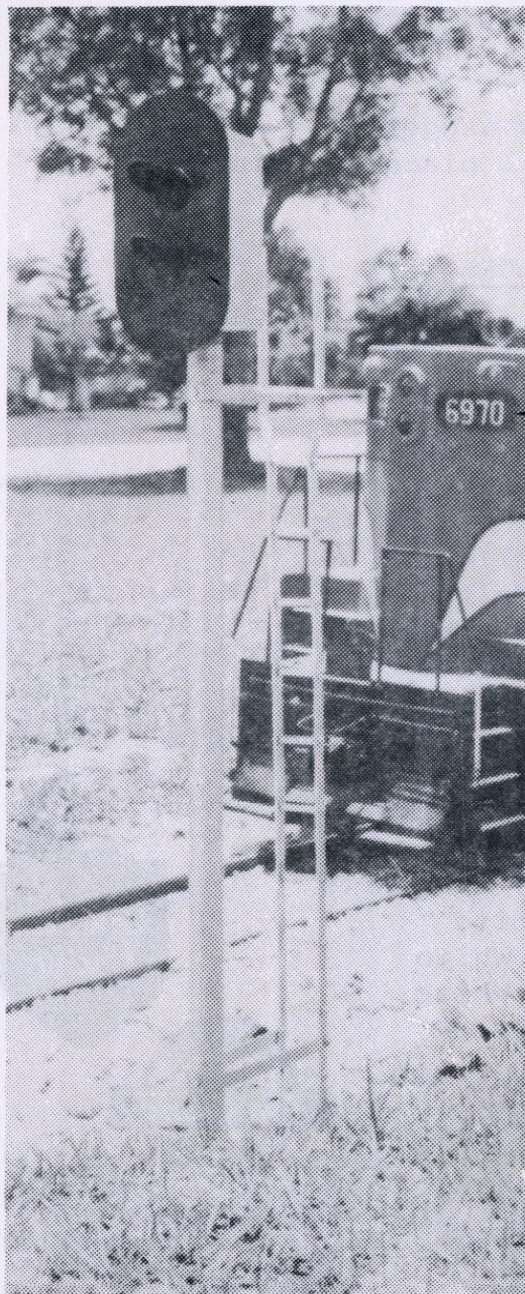
90-degree	\$150.00 ea.
45-90 degree	\$175.00 ea.
20-45 degree	\$200.00 ea.
Less than 20-degree	\$225.00 ea.

NOTE: If you have a track construction problem, we will be happy to give you an estimate on the cost of building any track feature. Koster's builds anything from a switch to a full railroad.





# SIGNALS

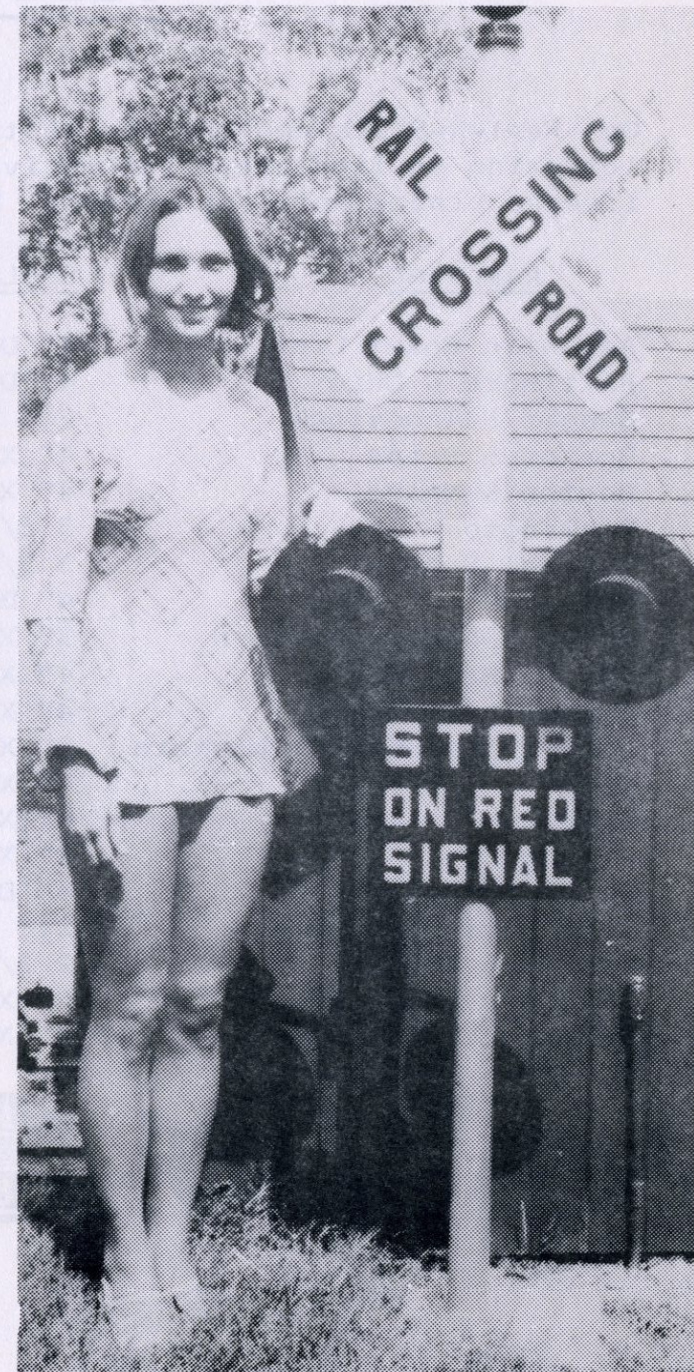


Shown above and to the left are some 1½" scale signals that we made for a customer. These signals are available, custom made for \$55 each. Relay controls to operate the signals are available.

To the right is a grade crossing signal built to half size. We have the castings available as follows:

RAILROAD CROSSING	\$25	pr.
20 pounds		

STOP ON RED SIGNAL SIGN	\$13
10 pounds	

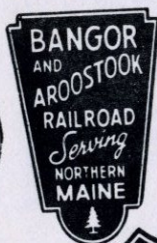




# PEEL-N-STICK EMBLEMS

Our Peel-N-Stick emblems are suitable for indoor or outdoor use. A few suggestions are for lettering on live steam locomotives and rolling stock, on buildings, wall plaques, windows, license plates and lamp shades. Presently available are the following:

<u>RAILROAD</u>	<u>SMALL SIZE</u>	<u>LARGE SIZE</u>	<u>COLORS</u>
Atlantic Coast Line	4" Diameter	7" Diameter	Red, Blue and White
Baltimore & Ohio	4" Diameter	7" Diameter	Blue and White
Bangor & Aroostock	2½" X 4½"	4½" X 8 3/4"	Red and White
Boston & Maine	4" X 4 3/4"	9¼" X 9½"	Yellow and Brown
Boston & Maine	4" X 4 3/4"		Blue and White
Burlington	3 3/4" X 4½"	6¼" X 7½"	Red, Black and White
Central Vermont	3 3/4" X 4"	7½" X 8"	Red and Yellow
Chesapeake & Ohio	4" Diameter	7¼" Diameter	Blue and Yellow
Chicago & Northwestern	3" X 4¼"	5½" X 8"	Red, Black, White
Cotton Belt Route	4" X 4"	7½" X 7½"	Black and White
Delaware & Hudson	4" X 4"	8" X 8"	Blue and Yellow
Denver & RioGrande Western	3" X 4"	5½" X 7½"	Yellow, Black, Blue and White
Erie	4" X 4"	7¼" X 7¼"	Blue and White
Erie	4" X 4"	7¼" X 7¼"	Yellow and Black
Frisko	2" X 4"	3 3/4" X 7¼"	Black and White
Great Northern	4" Diameter	7½" Diameter	Red, Black and White
Gulf Mobile and Ohio	2½" X 5"	4½" X 9½"	Red and White
Illinois Central	2 3/4" X 4"	5½" X 8½"	Green and White
Illinois Terminal	2" X 5"	3 3/4" X 9"	Green and White
Kansas City Southern	4" X 4"	7½" X 7½"	Red and Yellow



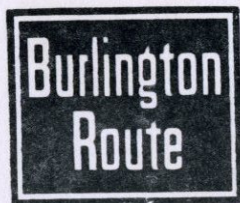


## PEEL-N-STICK EMBLEMS

Louisville & Nashville	3" X 4 $\frac{1}{2}$ "	5 $\frac{1}{4}$ " X 8 $\frac{1}{4}$ "	Red and White
Maine Central	4" Diameter	7" Diameter	Yellow and Green
Milwaukee Road	3" X 4"	5 3/4" X 7 $\frac{1}{2}$ "	Red and White
Missouri, Kansas Texas	2 $\frac{1}{2}$ " X 4"	4 3/4" X 7 1/2"	Red and White
Missouri Pacific	4" Diameter	8" Diameter	Red and White
New Haven			
(Script NY NH & H)	4" X 4 $\frac{1}{2}$ "	7 $\frac{1}{2}$ " X 8 $\frac{1}{2}$ "	Black and White
New York Central	2 3/4" X 4 1/4"	4 $\frac{1}{4}$ " X 9"	Red, Black and White
Nickel Plate	4" X 4"	7" X 7"	Blue and White
Northern Pacific	4" Diameter	7 $\frac{1}{2}$ " Diameter	Red, Black and White
Pennsylvania	4" X 4"	7 $\frac{1}{2}$ " X 7 $\frac{1}{2}$ "	Red and White
Rock Island	2 3/4" X 4 $\frac{1}{4}$ "	5 $\frac{1}{4}$ " X 7 3/4"	Red and White
Rutland	2 3/4" X 3 $\frac{1}{2}$ "	5 $\frac{1}{2}$ " X 7"	Two color green
Santa Fe	4" Diameter	7 $\frac{1}{2}$ " Diameter	Blue and White
Seaboard Coast Line	4 $\frac{1}{4}$ " Diameter	8" Diameter	Yellow and Black
Soo Line	3 3/4" X 4 $\frac{1}{2}$ "	6 $\frac{1}{2}$ " X 8"	Red and White
Southern	4" Diameter	7 $\frac{1}{2}$ " Diameter	Green and Yellow
Southern Pacific	4 $\frac{1}{4}$ " Diameter	8" Diameter	Blue, White and Yellow
Union Pacific	3 3/4" X 4"	7" X 7 $\frac{1}{2}$ "	Red, Blue, White
Western Pacific	3 3/4" X 4 3/4"	6 1/4" X 7"	Black, Red and White
RR Crossing Sign	4" Diameter		Yellow and Black

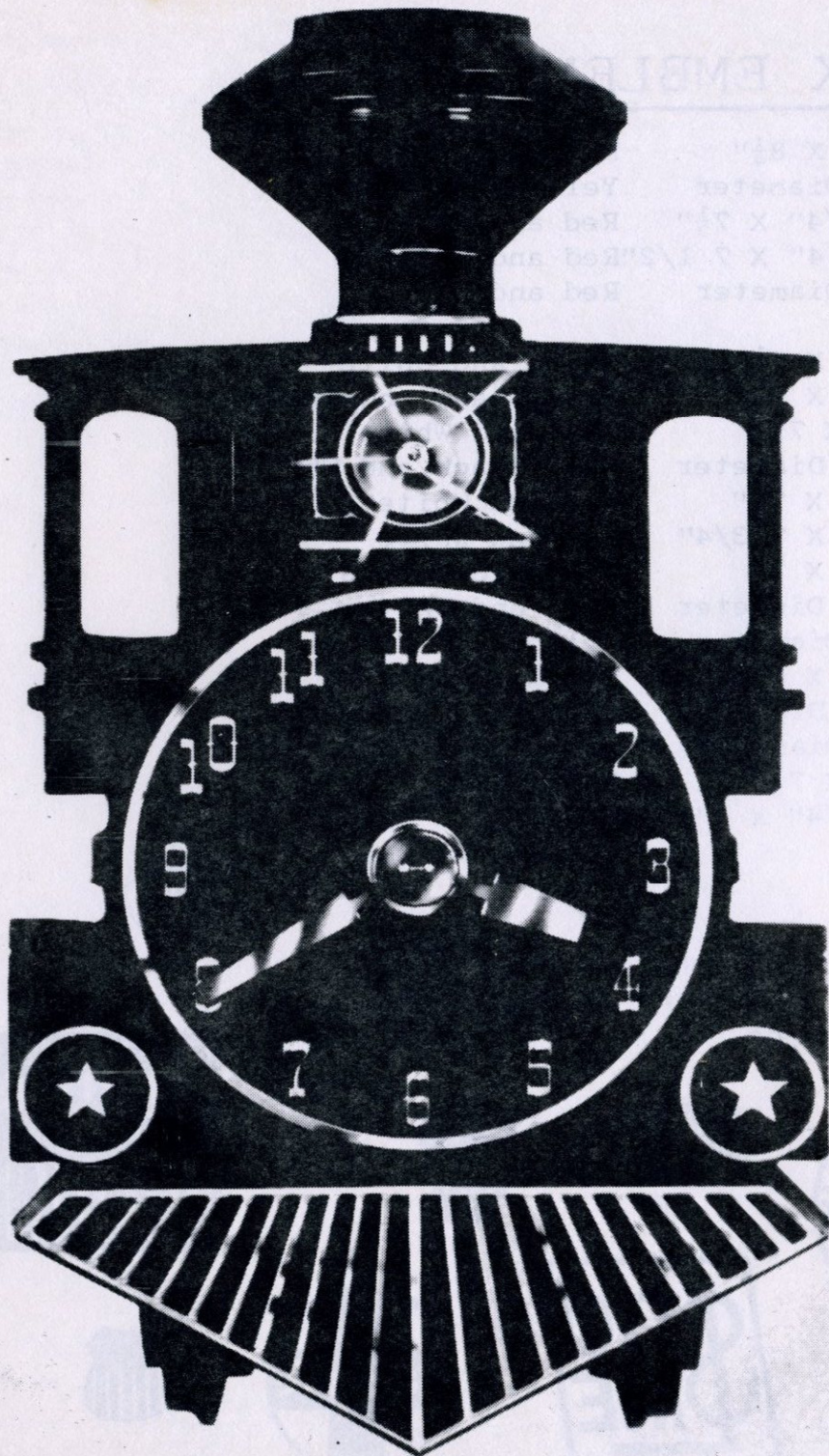
PEEL-N-STICK Emblems - - - Small Size .65 each  
Large Size 1.25 each

Add 25¢ handling charge on orders under \$5.00





## TRAIN CLOCK



Replica of old fashion train with illuminated headlight glittering and flickering. Hangs or stands. A truly unique electric clock. Bright chrome trim on black case. Easy to read 4- $\frac{1}{2}$ " dial, self starting accurate electric movement, U.L. approved. 11 $\frac{1}{2}$ " high, 6 $\frac{1}{2}$ " wide. Individually packed in reshippable carton, weight 4 $\frac{1}{2}$  lbs.

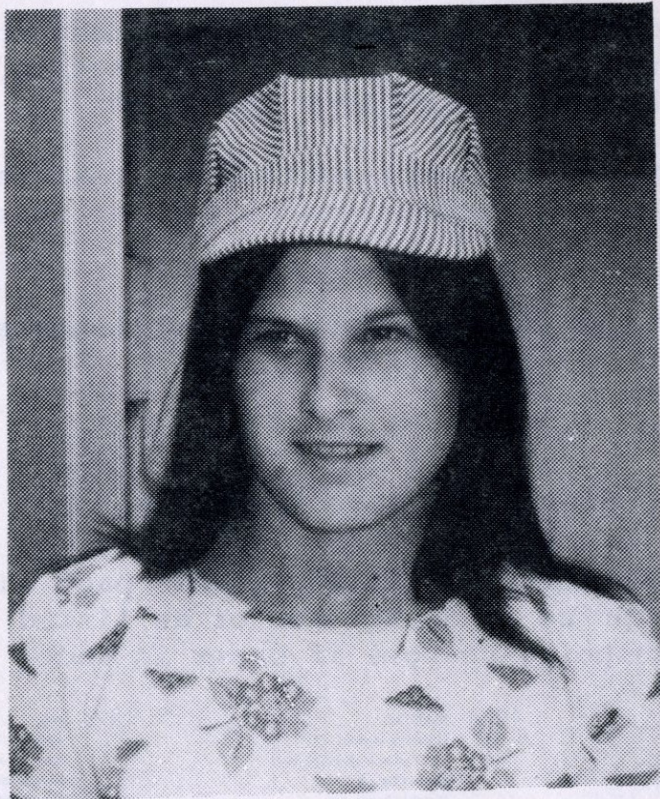
\$16.95 POSTPAID



## ENGINEER CAPS

Available in regular striped cotton denim.

Also available in children's sizes for the junior engineer.



### Striped Cap Sizes:

5 7/8

6

6 1/8

6 1/4

6 3/8

6 1/2

6 5/8

6 3/4

6 7/8

7

7 1/8

7 1/4

7 1/2

All priced at \$2.00 each



# LIVE STEAM



If you are not yet a subscriber to LIVE STEAM Magazine, we at Koster's would like to recommend that you consider subscribing.

LIVE STEAM is the only American magazine dedicated to the interests of Live Steamers and large-scale model railroaders...the only American publication devoted to metal-working and engineering as a fascinating hobby.

LIVE STEAM Magazine encourages the construction and operation of Live Steam equipment and reports on the technology, theory and history of steam engines for locomotive, traction, marine and stationary use in all scales and gauges...including prototype equipment.

LIVE STEAM Magazine also covers the expanding outgrowth of the large-scale model railroad field, the construction and operation of diesel and electric locomotives as well as interurban and trolley equipment for outdoor facilities.

Subscriptions to Live Steam are available from Koster's or directly from the publisher at:

LIVE STEAM Magazine  
Post Office Box 581  
Traverse City, Mich. 49684

Price - \$14.00 per year in U.S.A., \$16.00 per year to Canada

Back issues of LIVE STEAM Magazine are available from Koster's as listed on this page and the following page. Many are in very short supply. The price is \$1.25 each or as listed in the current issue of LIVE STEAM. Please allow for shipping charges if order is under \$10

1970 NOVEMBER  
5" Scale Narrow Gauge Standards  
Drills and Drilling - 4  
Raritan Tender  
Percy Stewart's Steamers - 1  
Arch Bar Trucks  
Ps4 Engine Truck

1971 OCTOBER  
5" Scale Narrow Gauge Shay  
1/2" Scale Live Steam  
Ps4 Boiler Sections  
Steam Locomotive Cylinders

1972 SEPTEMBER  
Way Back When  
Engineering Notes - 2  
Pennsy Prairies  
Arc Weld Your Rail  
  
OCTOBER  
Cass Scenic Railroad  
Ella Cinders  
Hydraulic Brakes - 1  
Driving Box  
Engineering Notes - 3  
BR&P Decapods  
Compound Steam Engine - 13

1972 NOVEMBER  
Gabe's Station House  
Compound Steam Engine - 14  
Lateral Motion Driving Box  
Alco Century 424  
AC&IO 8-0  
Engineering Notes - 4  
Hydraulic Brakes - 2  
Locomotive - Tender Draw Bar  
  
1973 DECEMBER  
Vic Shattock and the GGLS - 1  
Case Traction Engine - 6  
Mike's Bike  
Driving Boxes  
Susan Gail - 1  
Locomotive Bells  
Counter Balance

1974 MARCH  
Cumbres Summit, U.K.  
Vic Shattock and GGLS - 4  
Susan Gail - 4  
Weight Distribution  
Grass & Weed Control  
Case Traction Engine - 9  
Fiberglass Tender Tanks  
  
APRIL  
Fabricate Your Wheels  
Case Traction Engine - 10  
Hiss, Gurgle & Drip  
Industrial Coatings  
Henry Hospers - Master Live  
Steamer  
Two Footers of Maine  
Introduction to Trolleys  
Steam Locomotive Tenders  
Hobby Grows into Business

1974 May  
Highland Valley RR - 1  
Case Traction Engine - 11  
Midget Montezuma  
Susan Gail - 5  
1 1/2" Scale Conversion Figures  
Steam Locomotive Movement  
Big Hook  
  
JUNE  
Phoenix From the Ashes  
Minimum Radius Curves  
Highland Valley RR - 2  
Steam Locomotive Mechanics  
1" Scale Conversion Figures  
Susan Gail - 6  
Case Traction Engine - 12



# Back Issues of **LIVE STEAM** Magazine

**1974 JULY**  
Narrow Gauge at Brookfield Zoo  
Susan Gail - 7  
Steam Locomotive Mechanics  
Boiler Inspection  
Track Wear  
¾" Scale Conversion Figures  
1½" Big Boy and Cab Forward  
Case Traction Engine - 13

**1975 JUNE**  
Midway Shortline Railroad  
Steam Tractor  
Small Stationary Steam Plant  
Steam Launch Basics - 4  
Locomotive Valves  
Kiesel Exhaust Nozzle  
1.9" Scale Conversion Figures  
Build A ¾" Scale Shay - 6  
Case Traction Engine - 24  
Steamboat Wharf

**JULY**  
Two Spot  
S. S. Sabino  
Diamond Valley Railway  
Locomotive Valves  
Build A ¾" Scale Shay - 7  
Case Traction Engine - 25  
3" Scale Conversion Figures  
Steam Engine Lubrication - 1  
Crafty Old Craftsman  
Split Chuck

**AUGUST**  
Sierra Grande K-4m  
1975 BLS Meet  
Locomotive Valves  
Build A ¾" Scale Shay - 8  
Case Traction Engine - 26  
Technical Bulletin 001  
Boiler Connection  
Large Radius Curves  
Steam Engine Lubrication - 2

**NOVEMBER**  
Lombard Log Haulers - 2  
Build a ¾" Scale Shay - 9  
Case Traction Engine - 29  
2.5" Scale Conversion Figures  
Magnificent Merryweather  
Steamboat Wharf  
Fastener Engineering - 3  
Emery Polishing

**DECEMBER**  
Top Slide Dividing Head  
1975 Live Steam Club Survey  
Build A ¾" Scale Shay - 9 (4)  
Steamboat Wharf  
"E" Retaining Rings  
Snow Plow

**1976 JANUARY**  
Frontier Spirit  
AMBSO Boiler Code  
Phoenix Log Haulers - 1  
Prototype for Everything  
Steamboat Wharf  
Case Traction Engine - 31  
Pennsy DD-1 Electric  
¾" Scale Shay - 10  
Locomotive Valves  
The Other End of The Train  
Porcupine Boilers - 1  
Workbench - 1

**FEBRUARY**  
Dickins  
Hi-Line Track  
Case Traction Engine - 32  
Steamboat Wharf  
Center Test Indicator  
Porcupine Boilers - 2  
Speedometer for your Engine  
Locomotive Valves  
¾" Scale Shay - 11  
Phoenix Log Haulers - 2  
Old Names in Live Steam  
Work Bench - 2

**APRIL**  
Bud's Berk  
State of the Hobby  
Whistle Engineering  
Prototype Whistle Dimensions  
Port Huron Engines  
Dickins  
Steamboat Wharf  
Captain's Corner  
¾" Scale Shay - 13  
Boiler Corrosion  
Small Hex Bolts and Socket  
Screwdrivers  
Surface Plate  
Locomotive Valve Setting

**JUNE**  
The First Atlantics  
Live-in Live Steam Club - 1  
Captain's Corner  
A Steam Turbine - 2  
¾" Scale Shay - 15  
Realistic Bevel Pinions  
Locomotive Valve Settings  
Valve Events by Computer  
Big Boy Progress  
Arch Bar Tender  
Trucks  
Russell Traction Engine - 1  
Steamboat Wharf

**JULY**  
Denis P. Moore  
Gas-Fired Blast Furnace  
Russell Traction Engine - 2  
Track Leveling Device  
Wabash Prairies  
Live-In Live Steam Club - 2  
¾" Scale Shay - 16  
Steamboat Wharf  
Locomotive Valve Settings  
Captain's Corner  
Blueprint Reading

**1976 AUGUST**  
Propane Tank Car  
Regauging the Royal Scot  
Russell Traction Engines - 3  
Live-In Live Steam Club - 3  
Displacement Hulls - 1  
¾" Scale Shay - 17  
Kazuo Suzuki  
Locomotive Valve Settings  
Steamboat Wharf  
Captain's Corner  
Witwatersrand Locomotive Trials  
Australian Locomotive Trials

**OCTOBER**  
Thimble Power Plant  
¾" Scale Shay - 19  
1" Scale Traction Engine  
BLS Film Library  
Locomotive Valve Settings  
Steamboat Wharf  
Foundry Safety  
How to select machine tools  
Simple Wheel Lifter  
Captain's Corner

**NOVEMBER**  
Diamond Belle  
Stirling Cycle Engines - 1  
Advance Traction Engines - 3  
Beaver - 1  
Combatting Rot  
Locomotive Valve Settings  
Metal Supply  
¾" Scale Shay - 20  
Displacement Hulls - 4  
Finding Tap Drill Sizes  
Internal Combustion Conversion  
World's Smallest Live Steamers

**DECEMBER**  
Norman Gracy's Atlantic  
Stirling Cycle Engines - 2  
Beaver - 2  
12" Gauge Live Steam  
Merryweather Boilers  
¾" Scale Shay - 21  
Advance Traction Engines - 4  
Shays 'n Such  
Steamboat Wharf  
Steam Launch Crest  
Sharpening Files  
Levelling the Bench Lathe

**1977 JANUARY**  
Danish Garden Railroad  
Beaver - 3  
Belts and Cleats  
Displacement Hulls - 5  
¾" Scale Shay - 22  
Bronze and Monel Sources  
Matched Milling Vises  
Lucky 7 - 1  
Steamboat Wharf  
Locomotive Valve Settings  
Captain's Corner  
Shay 'n Such

**1977 FEBRUARY**  
Superdetailed Diesel  
Beaver - 4  
Inflation Fighters  
Kozo Hiraoka's Heisler  
Metric/American Thread Conversions  
Steamboat Wharf  
Pulley Ratios and Cutting Speeds  
Locomotive Valve Settings  
Lucky 7 - 2  
Displacement Hulls - 6  
Belts and Cleats  
Steamer Ruth  
Shays 'n Such

**MARCH**  
Lucky 7 - 3  
Steamboat Wharf  
Belts and Cleats  
Beaver - 5  
Kozo Hiraoka's Tools  
Shays 'n Such  
Appliance Workbenches  
Displacement Hulls - 7

**APRIL**  
S.L. Puffin  
Kozo Hiraoka's Tools - 2  
Beaver Delay  
Woolf & Grime Valve Gears - 1  
Steamboat Wharf  
Outboard Diesel Drive  
Lucky 7 - 4  
Displacement Hulls - 8

**MAY**  
England's Steam Wagons  
Monotube Steam Generator - 1  
German Live Steam  
Shays 'n Such  
White Water in the Boiler Room  
Lucky 7 - 5  
Tapping Jig  
New Club in Japan  
Steamboat Wharf  
Locomotive Valve Settings

**JUNE**  
Steam Calliope  
Lucky 7 - 6  
M. E. Exhibition  
Steamboat Wharf  
Woolf & Grime Valve Gear - 2  
Three-Wheeled Rider Car  
Shays 'n Such  
Monotube Steam Generator - 2  
Log Trestle  
Witwatersrand Trials  
Locomotive Valve Settings

**JULY**  
Adelaide Club  
Woolf and Grime Valve Gears - 3  
Swedish Craftsmanship  
Steamboat Macrame  
Turn-Around Test  
Japan's Noble Lady  
Steamboat Wharf  
Lucky 7 - 7  
Seven's Sisters  
Chautauqua Belle  
Beaver  
Shays 'n Such  
Inflation Fighters  
Locomotive Valve Settings

**1977 AUGUST**  
Precursor  
Propane Torches  
Steamboat Wharf  
Shay 'n Such  
Woolf and Grime Valve Gears - 4  
Match Plate Vibrator  
Inflation Fighters  
Lucky 7 - 8  
Beaver - 6

**SEPTEMBER**  
Picturesque Memories  
Flange Fillets  
Backyard Boiler Water Treatment  
Workbench Legs  
Carillon Park  
Steamboat Wharf  
Sharpening Lathe Tools  
Fabricate Cylinders  
Woolf and Grime Valve Gears - 5  
Plumb Your Hoist  
Shays 'n Such  
Locomotive Valve Settings  
Acid Strengths  
Lucky 7 - 9  
Safety Valve  
Inflation Fighters  
Link and Pin Couplers - 1  
Beaver - 7

**OCTOBER**  
Kitbashing  
Unusual Steam Engine  
Fact Fundamentals - 2  
Filing Machine  
Lucky 7 - 10  
Australian Miniature Loco. Trials  
Henry Greenly's Scrapbook  
Erie's Triplexes  
Beaver - 8  
Steamboat Wharf

**NOVEMBER**  
CliShay - 1  
Great Steam Cultivators  
Birmingham Trials  
Internal Combustion Conversions  
Lucky 7 - 11  
Electroless Nickel Plating  
Link and Pin couplers - 3  
Western Washington Live Steamers  
Boiler Test Balance  
Case for Phos-Copper  
Angle Plate  
Minneapolis Traction Engine - 1  
Fine-Thread Tool Bit  
Compound Pulley Ratios  
1½" Riding Cars  
Erie's Triplexes - 2  
Kozo's Heisler

Also available  
are all issues  
from November  
1977 to date.



# TRAIN SHED CYCLOPEDIAS

REPRINTS OF PLANS FROM THE ORIGINAL CYCLOPEDIAS, TO ASSIST YOU IN BUILDING YOUR MINIATURE RAILROAD.

- |   |   |  |
|---|---|--|
| 1. Out of Print.  | 14. 4-8-4's and Other Heavy Passenger Locomotives 70 pages \$3.95 | 26. Railway Service Cars, 1928-1943 88 pages \$4.95  |
| 2. Out of Print.  |   |  |
| 3. Box, Stock & Refrigerator Cars, 1931. 80 pages \$4.50    | 15. Heavy Traction 1922-1941 88 pages \$4.95                      | 27. Signals & Signal Symbols 1911 32 pages \$2.50  |
| 4. Out of Print.  | 16. Famous Passenger Trains 1943 72 pages \$3.95                  | 28. Cars, Scales and Gates from 1909 BUDA catalog 160 full size pages reprinted as 80 pages \$5.50 |
| 5. Gondolas and Hoppers, 1940 88 pages \$4.50               | 17. Box, Stock & Flat Cars 1943 72 pages \$3.95                   | 29. Freight Cars 1892 80 pages \$5.50  |
| 6. Passenger Locomotives, 1930 77 pages \$3.95              | 18. Locomotives from 1916 Dictionary 88 pages \$4.95              | 30. Rail Motor Cars 1919-1928 64 pages \$4.50  |
| 7. Out of Print.  | 19. Buildings & Structures 1893 (Part 3) 80 pages \$4.50          | 31. Locomotives (Part 1) from the 1927 Locomotive Cyclo-<br>pedia 80 pages \$5.50                  |
| 8. Passenger Cars from 1931 Cyclopedia 88 pages \$4.50      | 20. Diesel Electric Locomotives 1925-1938 80 pages \$5.95         | 32. Locomotives 1927 (Part 2) 80 pages \$5.50  |
| 9. War and Standard Locomotives & Cars 1919 88 pages \$4.50 | 21. Passenger Cars 1943 80 pages \$4.50                           | 33. Buildings & Structures (Part 5) 72 pages \$4.95  |
| 10. Rail Motor Cars of the 1930's 88 pages \$4.50           | 22. Steam Locomotives 1938 (Part 1) 80 pages \$4.50               | 34. Shays and Other Geared 64 pages \$4.50   |
| 11. Caboose Cars 1879-1943 64 pages \$4.50                  | 23. Steam Locomotives and Tenders 1938 (Part 2) 80 pages \$4.50   | 35. Freight Cars 1919 (Part 1) 80 pages \$5.50   |
| 12. Tank Cars 1922-1943 80 pages \$4.50                     | 24. Buildings & Structures 1893 (Part 4) 92 pages \$4.95          | 36. Freight Cars 1919 (Part 2) 80 pages \$5.50   |
| 13. Buildings & Structures 1893 (Part 2) 85 pages \$4.95    | 25. Electric Motor Cars 1888-1928 80 pages \$4.50                 |  |

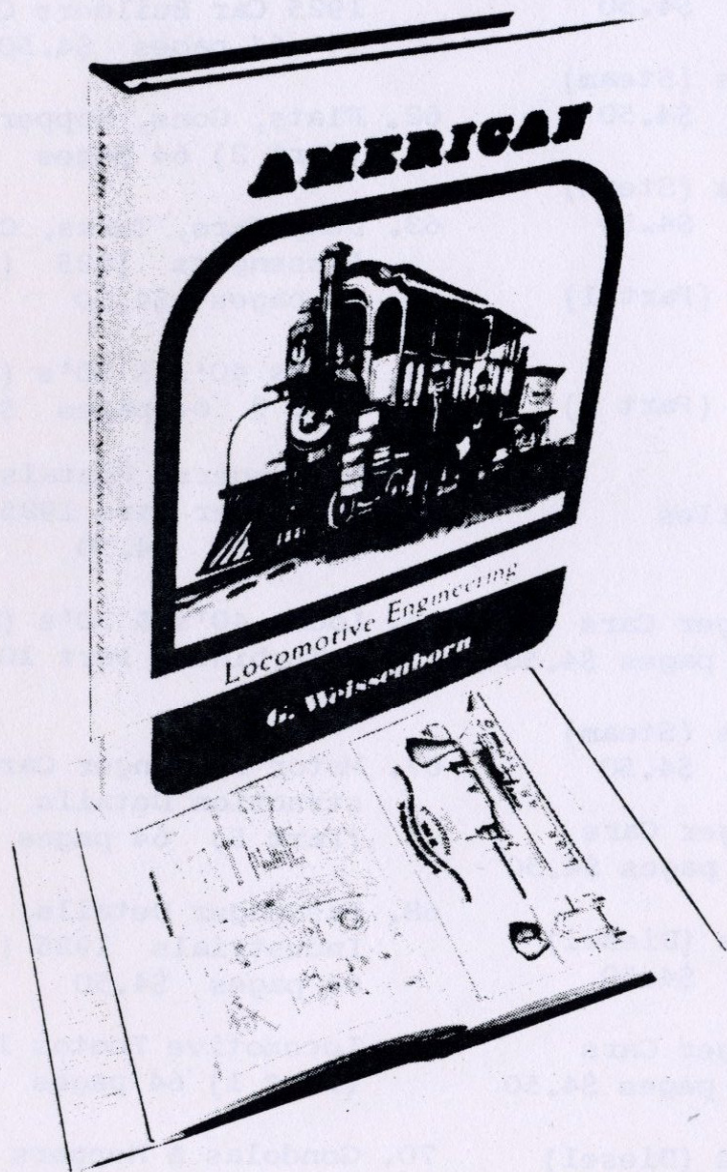


# TRAIN SHED CYCLOPEDIAS

- |   |  |  |
|---|--|--|
| 37. Industrial & Foreign Locomotives 1930 72 pages \$4.95           | 49. Locos 40's & 50's (Steam) Part 3 64 pages \$4.50       | 61. Box, Stock, Reefers from 1925 Car Builders Cyc. (Part 1) 64 pages \$4.50 |
| 38. Buildings & Structures (Part 6) 72 pages \$4.95                 | 50. Locos 40's & 50's (Steam) Part 4 64 pages \$4.50       | 62. Flats, Gons, Hoppers 1925 (Part 2) 64 pages \$4.50                       |
| 39. Voss Passenger Cars 1892 80 pages \$5.50                        | 51. Locos 40's & 50's (Steam) Part 5 64 pages \$4.50       | 63. Dump Cars, Tanks, Cabooses, Passengers 1925 (Part 3) 64 pages \$4.50     |
| 40. Locomotive Cabs and Fittings 1927 (Part 1) 40 pages \$3.00      | 52. Steam Locos 1919 (Part 1) 64 pages \$4.50              | 64. Locos 40's & 50's (Diesel) Part 9 64 pages \$4.50                        |
| 41. Locomotive Cabs and Fittings 1927 (Part 2) 40 pages \$3.00      | 53. Steam Locos 1919 (Part 2) 64 pages \$4.50              | 65. Passengers, Postals, Motor Passenger Cars 1925 (Part 4) 64 pages \$4.50  |
| 42. Passenger Cars 1919 32 pages \$3.00                             | 54. Bridges and Trestles 64 pages \$4.50                   | 66. Locos 40's & 50's (Electrics & Turbines) Part 10 64 pages \$4.50         |
| 43. Diesel & Oil Electrics 1930's 64 pages \$4.50                   | 55. Freight & Passenger Cars 1898 (Part 1) 64 pages \$4.50 | 67. Motor Passenger Cars, Construction Details 1925 (Part 5) 64 pages \$4.50 |
| 44. Stoker & Logging Locos 1913 and 1919 64 pages \$4.50            | 56. Locos 40's & 50's (Steam) Part 6 64 pages \$4.50       | 68. Passenger Details, Trucks, Industrials 1925 (Part 6) 64 pages \$4.50     |
| 45. Locos 40's & 50's (Steam) Part 1 64 pages \$4.50                | 57. Freight & Passenger Cars 1898 (Part 2) 64 pages \$4.50 | 69. Locomotive Photos 1912 (Part 1) 64 pages \$4.50                          |
| 46. Flats, Gons, Hoppers 1931 (Part 1) 64 pages \$4.50              | 58. Locos 40's & 50's (Diesel) Part 7 64 pages \$4.50      | 70. Gondolas & Hoppers 1943 (Part 2) 64 pages \$4.50                         |
| 47. Locos 40's and 50's (Steam) Part 2 64 pages \$4.50              | 59. Freight & Passenger Cars 1898 (Part 3) 64 pages \$4.50 |  |
| 48. Hoppers, Industrials, & Lettering 1931 (Part 2) 64 pages \$4.50 | 60. Locos 40's & 50's (Diesel) Part 8 64 pages \$4.50      |  |



# AMERICAN LOCOMOTIVE ENGINEERING



A monumental treatise on steam power appearing two years after the transcontinental railroad was completed, during the Golden Age of American railroading. This was the first full-scale attempt to assess the "state of the art" of locomotive building in the U. S. The entire volume is devoted to engineering drawings and scale engravings—ninety five of them in all - from Baldwin, New Jersey RR, Danforth, PFW&C, and Grant Locomotive Works. The author was a mechanical engineer and the book provided technical assistance to the boilermaker, the machinist and the manager of the engines.

Reprinted from the original 1871 edition.

104 pages, 9 1/4 X 12 1/4.

\$9.50



# EARLY MOTIVE POWER OF THE BALTIMORE AND OHIO R.R.



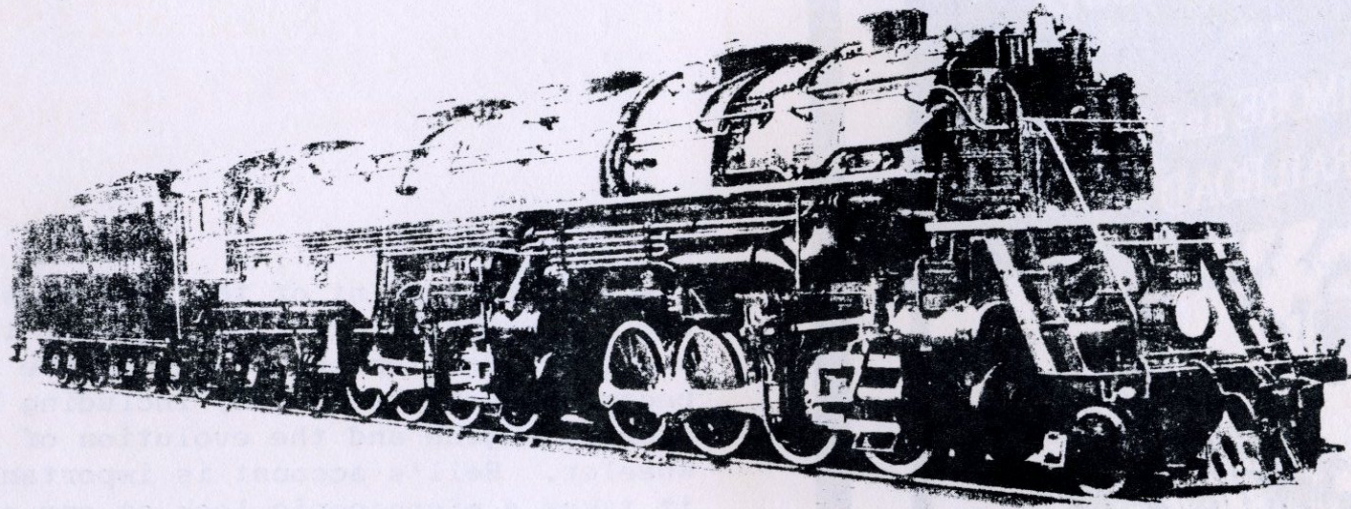
The quality reprint of the 1912 classic. These are historically detailed pages of the trial and error development of locomotive designs that became industry standard, including Ross Winan's "Camel" engine and the evolution of the ten-wheeler. Bell's account is important because it takes a microscopic look at one organizations efforts during the most crucial years of the locomotive industry - when some basic theories succeeded and others failed. These were the crucial decades from 1820 to 1860. A valuable addition to your railroad reference shelf.

158 pages, 5 3/4 X 8 3/4, hardbound, engravings and drawings.

\$8.95



## THE IRON HORSE



This magnificently illustrated volume portrays the evolution of the steam locomotive, from Richard Trevithick's five-and-a-half-ton engine, which opened the railway age in 1804 by clanking down a nine-mile track in Wales, to the building of such marvelous machines as the New York Central's long-legged 999 and the most majestic steam engines ever constructed, the Union Pacific's 604-ton "Big Boys," of which an engineer once said, "If those brutes can't go over a mountain, they'll go through it."

Author-illustrator Henry B. Comstock opens his account with a short history of the development of locomotives before they reached American shores. The first American locomotive was a midget - hardly more than a toy by British standards - which Colonel John Stevens built and operated on his Hoboken, N.J. estate in 1825. After some false starts, such as the "Aeolus," equipped with mast and sail, and the curious design for

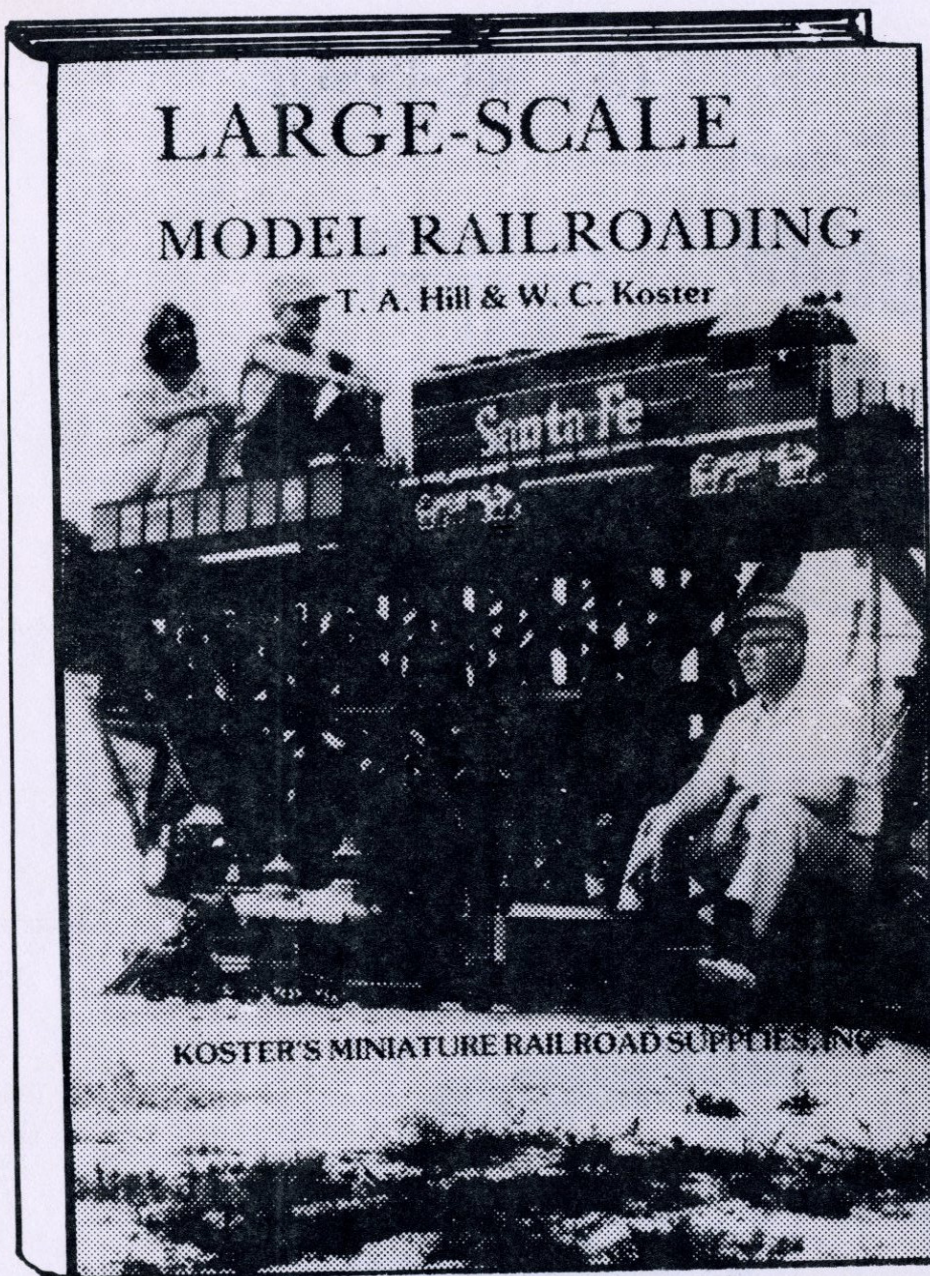
an engine powered by a horse on a treadmill, which actually won a prize from the South Carolina Railroad, American inventors quickly caught up to their British counterparts.

Henry B. Comstock, one of America's foremost technical illustrators, has contributed articles and drawings to "Popular Science," "Popular Mechanics," and many other publications. For ten years he was associate editor of "Popular Science" and, for another decade, editor of "Railroad Magazine."

The 219 pages, 8½"x11", with many fine illustrations will prove to be a delightful source of information for all Live Steamers.

Originally published at \$17.50, this fine book is now available for only \$9.95 POSTPAID.





**HARD BOUND COVER**

**A FULL 136 PAGES**

**PAGE SIZE: 5½" x 8½"**

**25 DRAWINGS**

**40 PHOTOGRAPHS**

For the Newcomer, an over-all view of the hobby with an explanation of how to get started.

For the Builder, a review of construction priorities and development alternatives.

For the Craftsman, a trouble shooters guide to many of the problems live steamers face.

Whether you are just getting started in the hobby, or even if you are an experienced railroader, you will find this book to be a constant help. The twenty chapters will take you from the history of large-scale model railroading through selecting your locomotive and property, designing your track plan, and building track and switches to the actual operation of your railroad. We recommend this book to everyone.

**\$10.00**



Limited Quantity!

## SPECIAL RE-ISSUE



### LOCOMOTIVE CYCLOPEDIA (1925)

An exquisite reproduction of the vintage year of Cyclopedias, presenting the steam locomotive in its finest hour.

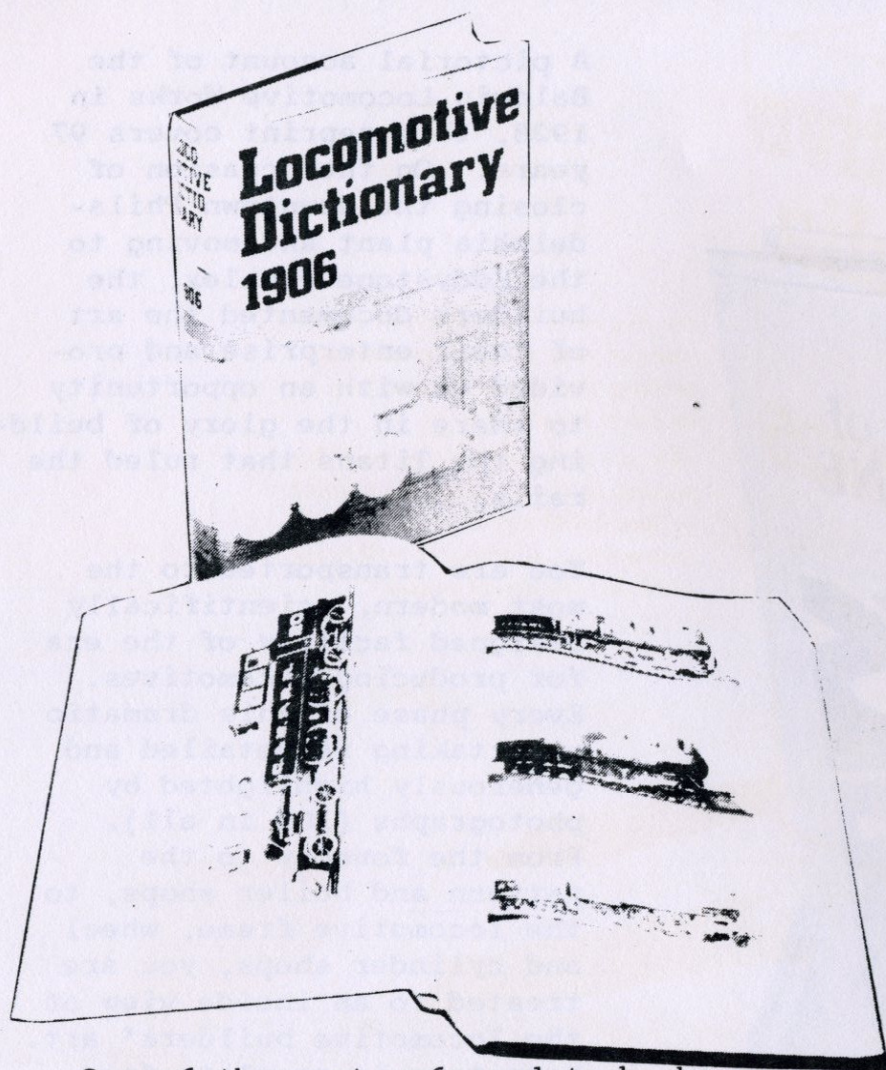
The seventh edition — and the second in the Cyclopedia format — has 1,132 pages with 2,588 illustrations. A massive reference work for the steam purist.

**\$49.95**



## 1906 LOCOMOTIVE DICTIONARY

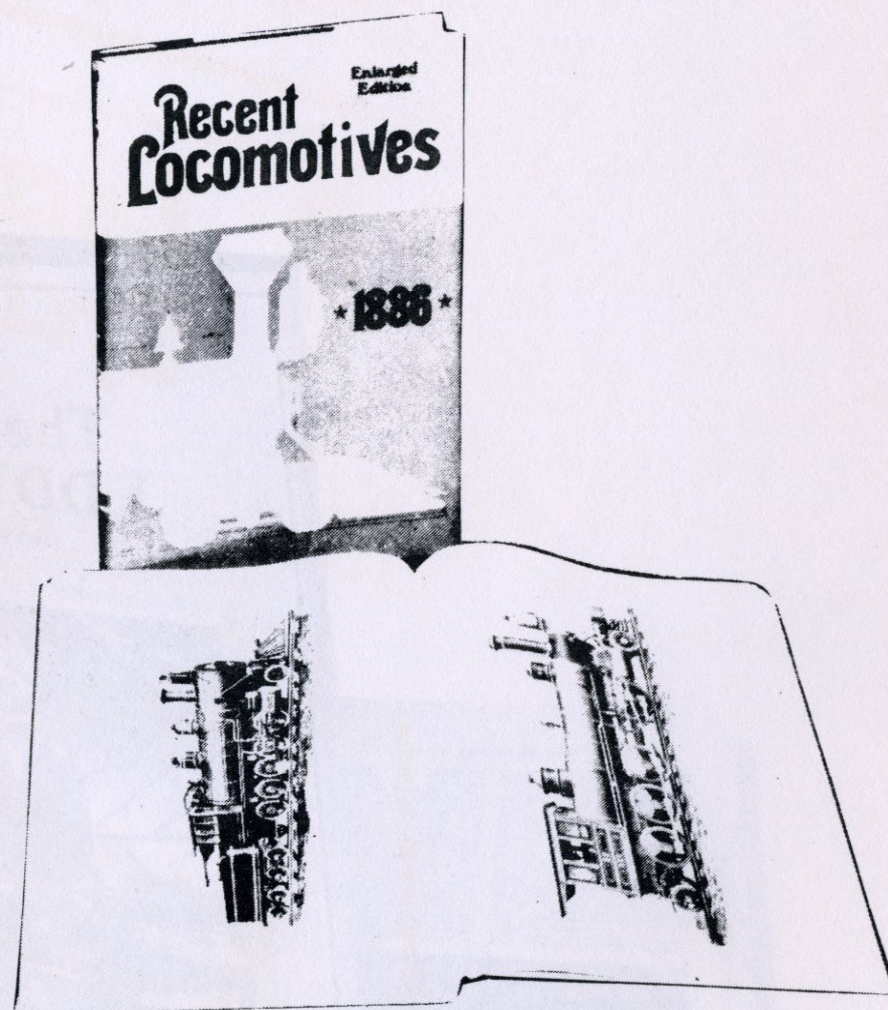
## RECENT LOCOMOTIVES



One of the most-referred-to books ever published about - and for - American Railroads. 684 pages with over 5,145 illustrations (many drawings and photos)

Reproduced in its entirety, this was the first locomotive dictionary to be published in the 20th Century.

Size 8 1/4 X 11 1/2.....Price \$24.95



The most complete locomotive book to be published in the 19th Century - 372 giant pages of historical text, scale drawings and beautiful line drawings.

Pages 11" X 15"

Price \$34.95



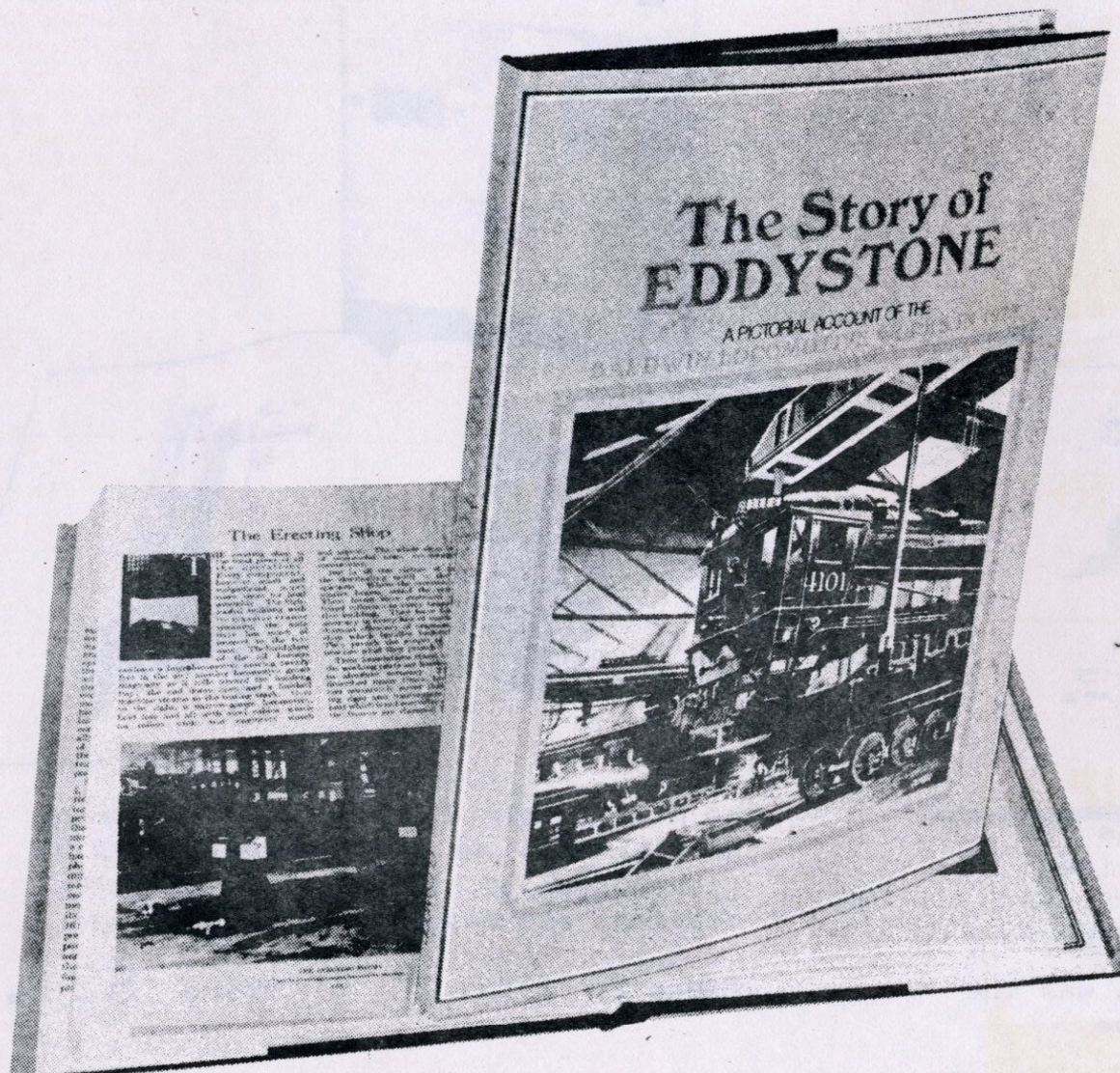
# THE STORY OF EDDYSTONE

A pictorial account of the Baldwin Locomotive Works in 1928, this reprint covers 97 years. On the occasion of closing the downtown Philadelphia plant and moving to the Eddystone complex, the builders documented the art of their enterprise and provided us with an opportunity to share in the glory of building the Titans that ruled the rails.

You are transported to the most modern, scientifically designed facility of the era for producing locomotives. Every phase of this dramatic undertaking is detailed and generously highlighted by photographs (108 in all). From the foundry to the pattern and boiler shops, to the locomotive frame, wheel and cylinder shops, you are treated to an inside view of the locomotive builders' art. Your tour is complete from the administration building to the wharf. The exciting jacket illustration is by artist Roger Cortani.

Preface by D. S. Richter.

90 pages, 8 1/2 X 11, hardbound.  
\$8.95





# SOUTHERN

## Ps-4 Class Locomotive Drawings



Direct from the Southern Railway's drawing files come the Ps-4 Pacific Locomotive Drawings in large, easy-to-read  $\frac{1}{2}$ " = 1'0" scale. Erecting Card Elevations and Sections, details for Lead and Trailing Trucks, Engine Frame and Cradle, Baker and Walschaert Valve Gears, Smokebox, Superheater, Feedwater Piping, Six-Wheel Tender Trucks, Tender Frame, Tender Tank and complete Lettering and Painting Diagram ... plus complete specifica-

tions furnished to the builders and photos by the builders and in service.

In large 11" x 17" format with eight 11" x 25" fold-out pages. The book (equivalent to 72 pages  $8\frac{1}{2}$ " x 11") is plastic-bound to open flat for reference.

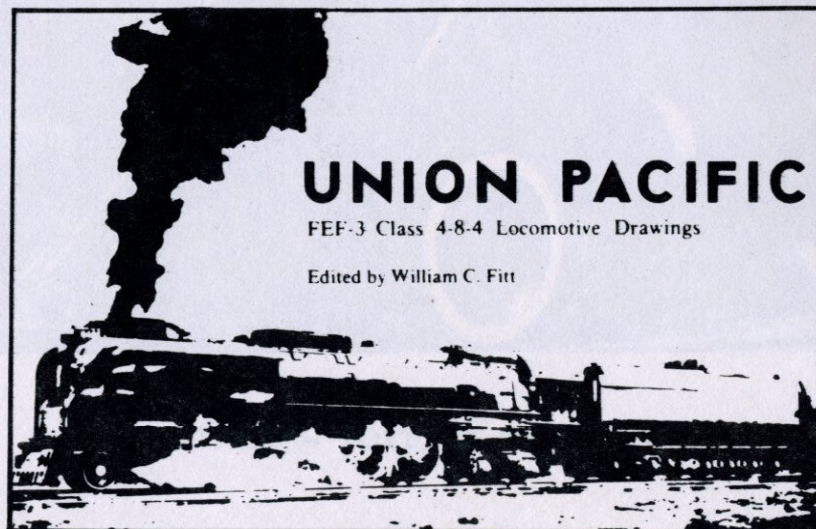
This is the first in a series of books preserving the details of Steam Locomotive construction which will be of interest to railroad buffs, historians, model railroaders and collectors.

ISBN 0-914104-00-4

Library of Congress Catalog Card No. 73-85916

**\$7.50**

## UNION PACIFIC FEF-3 Class 4-8-4 Locomotive Drawings



The Union Pacific FEF-3 Class 4-8-4 locomotives represent one of the latest examples of steam locomotive design and construction. From the railroad's original drawings, top-quality reproductions have been made at  $\frac{1}{2}$ " = 1'0" scale for clarity and convenience. Erecting Card Drawings plus all available details and diagrams for painting and lettering are included. The set is made up of 55 drawings of the Engines and Tenders as well as more than 30 large photos of these locomotives.

To properly present the material, an 11" x 17" format is used with 54 pages which include 8 fold-out pages 11" x 23", 20 fold-out pages 11" x 29", and 16 fold-out pages 11" x 32" ... an equivalent of 182 conventional  $8\frac{1}{2}$ " x 11" pages.

The second in the Wildwood series of books preserving details of steam locomotive construction, it will be a welcome addition to the library shelves of model railroaders, historians, railroad buffs and collectors.

ISBN 0-914104-02-0

Library of Congress Catalog Card No. 75-27822

**\$12.50**

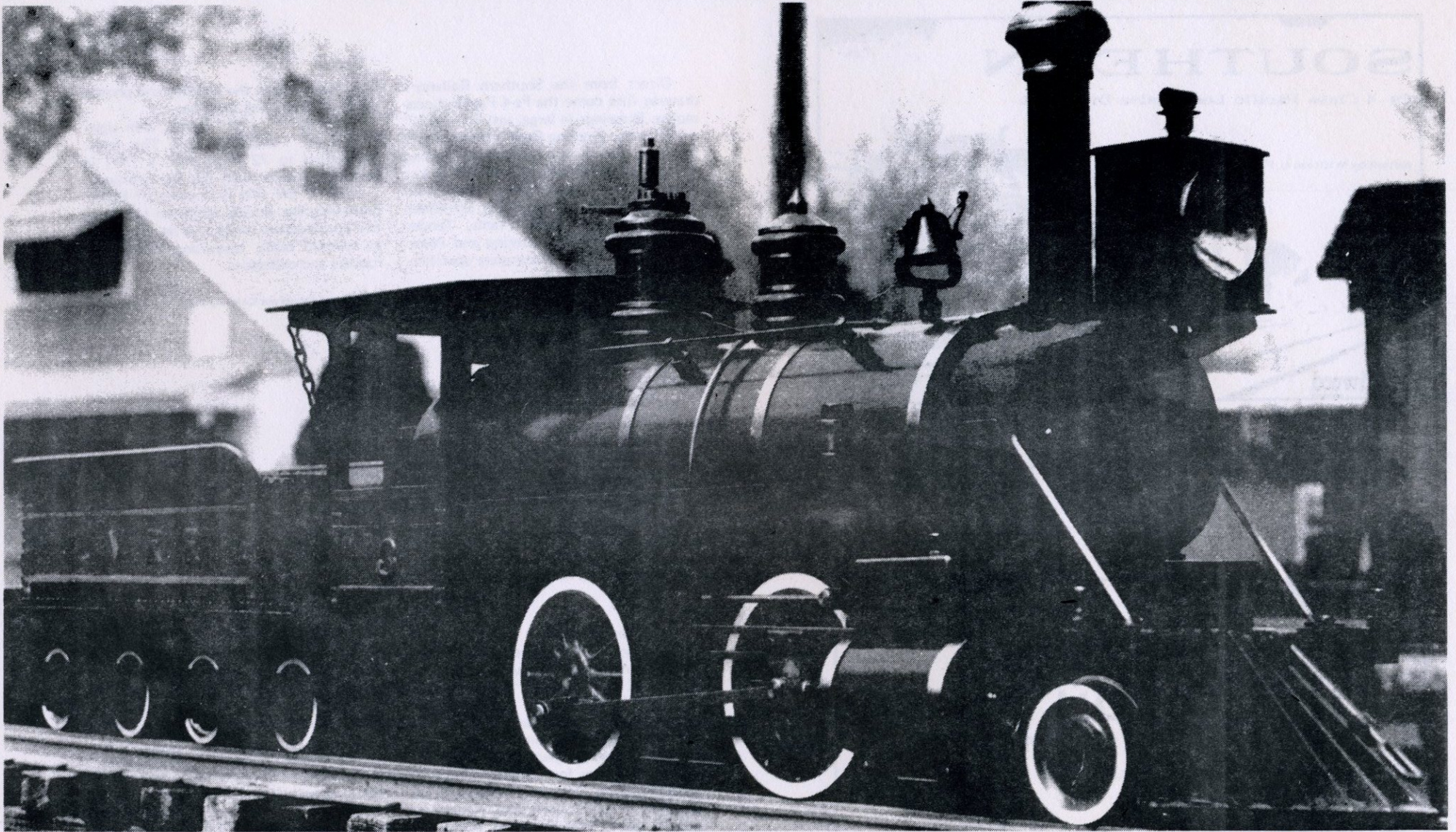


Building the

# RARITAN

An ideal beginners' project in  
Live Steam from a proven design

by William H. Morewood



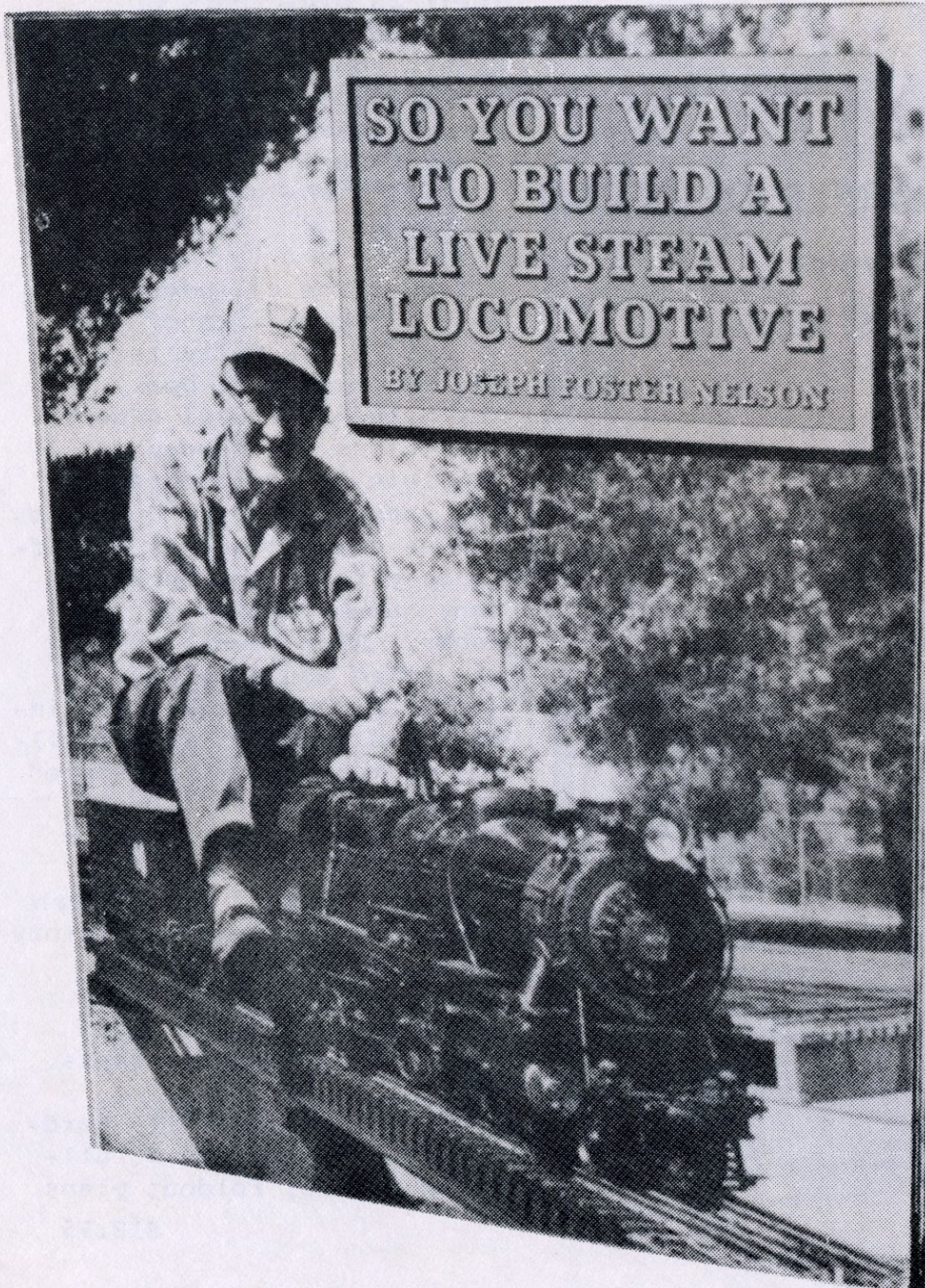
Complete details and step-by-step instruction for construction of the popular locomotive from the pages of **LIVE STEAM** Magazine.

**PLUS** a mileage indicator to tell how far you travel on each run and a riding car to match the RARITAN when you drive your locomotive.

CASEBOUND EDITION - \$15.00



# SO YOU WANT TO BUILD A LIVE STEAM LOCOMOTIVE



The first such comprehensive coverage of the techniques applicable to American Live Steam locomotive construction ever offered. Nearly 200 pages with more than 300 drawings, 25 tables and 50 photographs describe the methods used in each stage of construction of a Live Steam locomotive in any scale.

Subjects covered include:

PROTOTYPE OR FREE-LANCE DESIGN

TOOLS REQUIRED AND ENGINEERING DATA

RUNNING GEAR, FRAMES, JOURNALS, WHEELS, TREADS AND GAUGE.

CYLINDERS

SMOKE BOX, BOILER FRONT, BLOWERS AND BLAST NOZZLES.

BOILER DESIGN, FABRICATION, INSULATION, JACKET, MOUNTINGS AND SUPERHEATERS.

REVIEW AND COMPARISON OF ALL POPULAR VALVE GEARS.

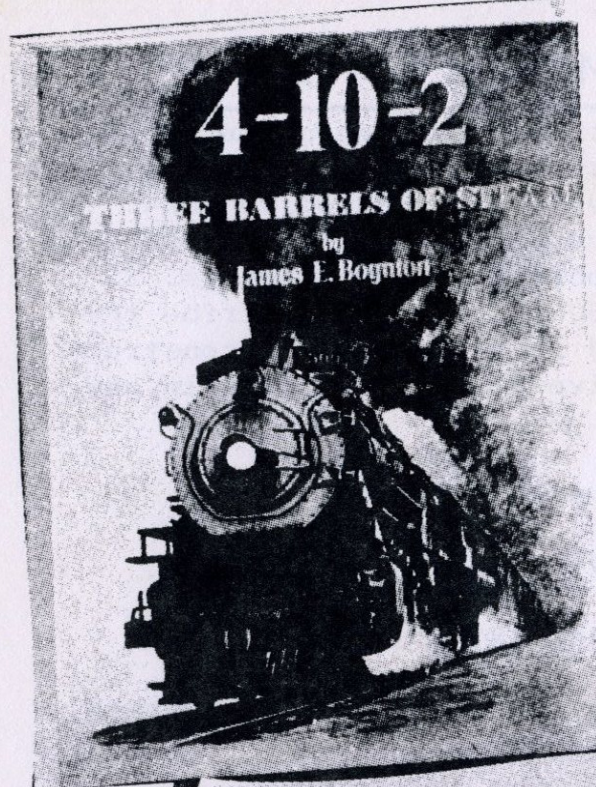
FEED WATER SYSTEM AND PLUMBING.

BRAKES, TENDERS, FUEL AND COMBUSTION.

ACCESSORIES, GAUGES, SAFETY VALVES AND WHISTLES.

OPERATION.





## THREE BARRELS OF STEAM

by James E. Boynton

Foreword by D. S. Richter

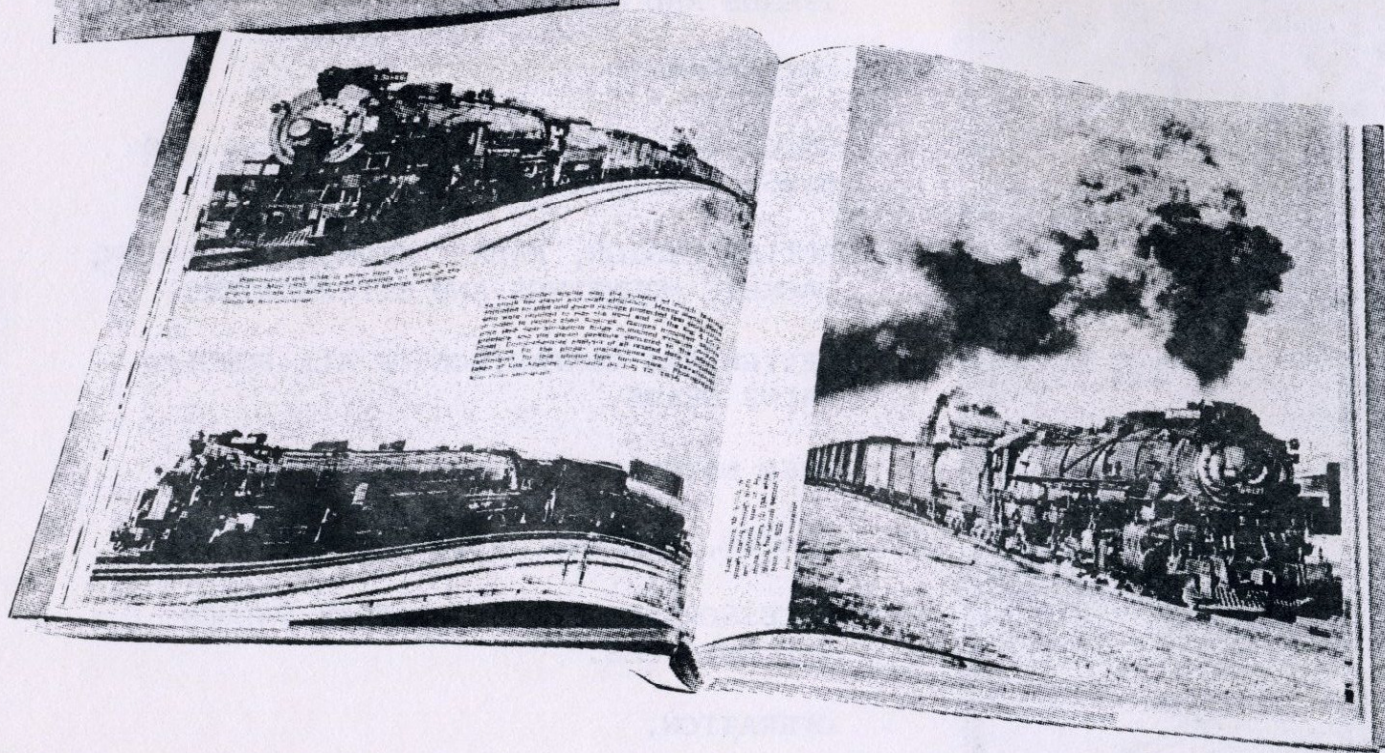
Virtually unchallenged in their 25 plus years of existence, the SP's 5000s always commanded a special respect and attention - their looks, their voice, their capacity gave them a special niche among the thousands.

All 60 three cylinder 4-10-2 locomotives of the SP and UP are fully treated in this pictorial book. The help of several expert collectors was needed to complete the documentary. For example, Guy L. Dunscombs famous collection was unselfishly offered and includes many names devoted to the hobby. Alan Youell combed his files and supplied superb pictures taken by himself and others. And excellent photographs were offered by Gerald M. Best from his storehouse of railroadiana.

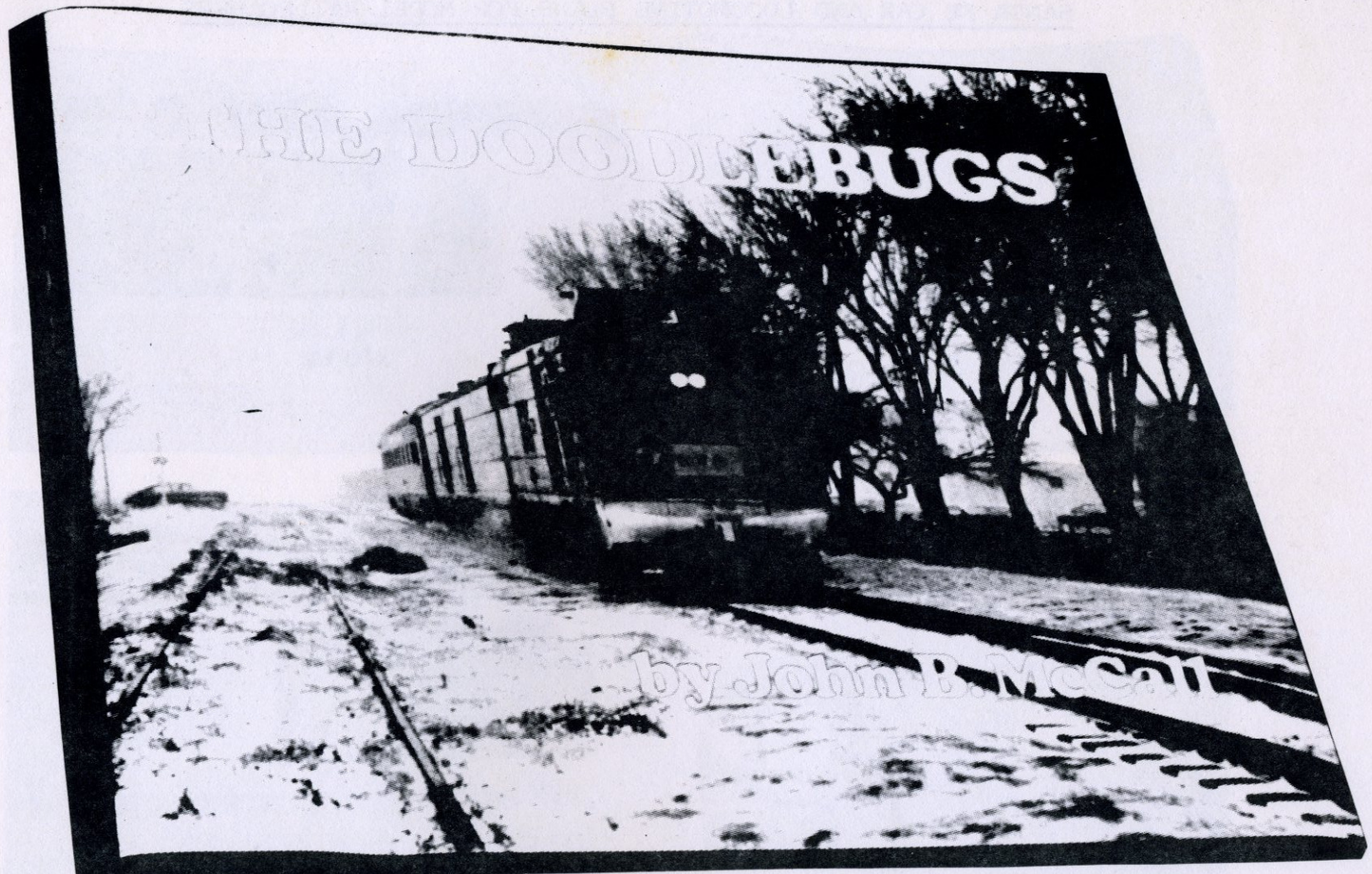
Three Barrels of Steam is an exciting, informative history of these monsters of the rails. You will read about train wrecks, robberies, floods and other disasters.

164 pages, 8 1/2 X 11, hard-bound, maps, photos 2 full-color plates, foldout plans.

\$12.75







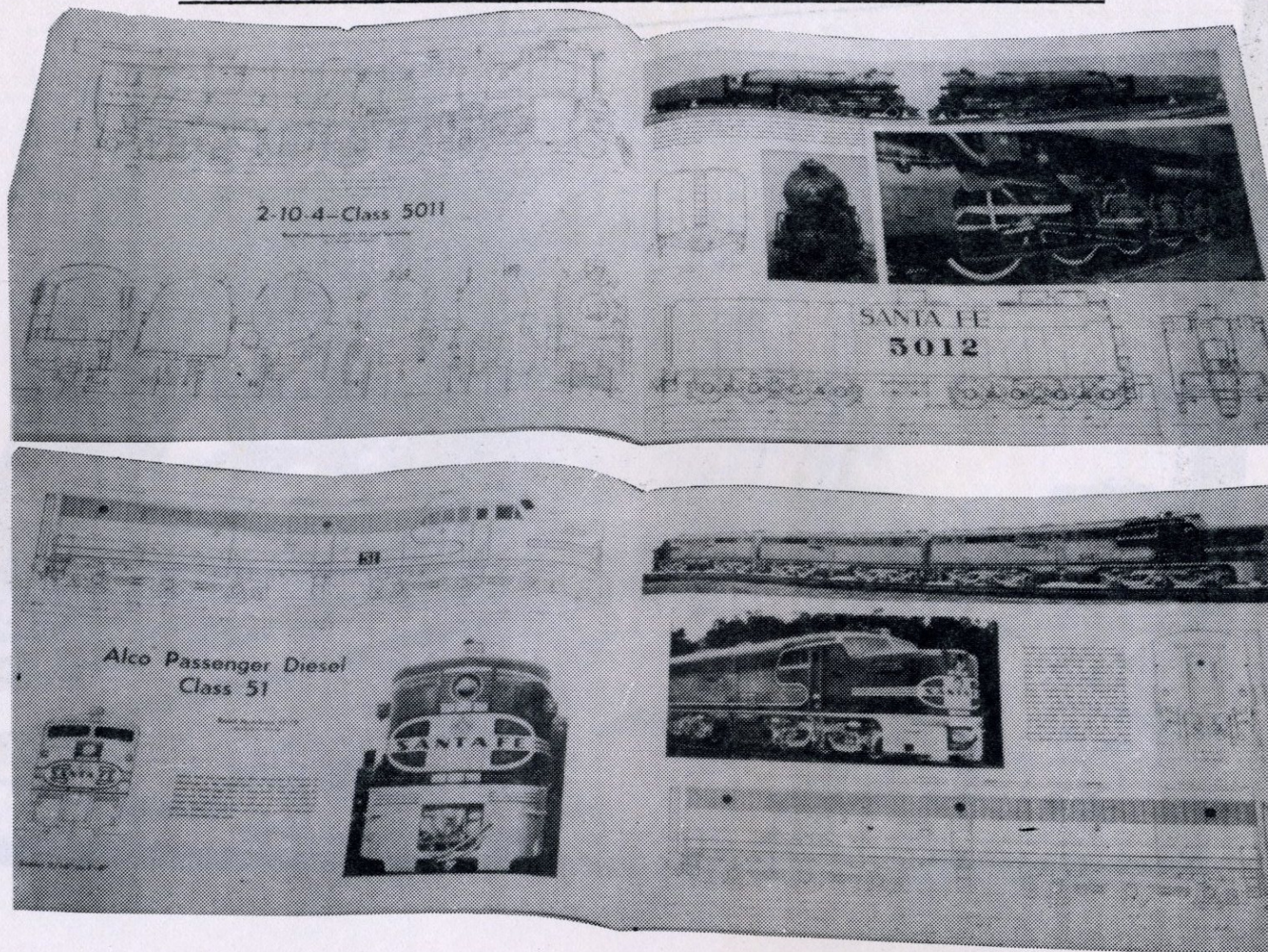
THE DOODLEBUGS is not just a picture-book. . . It is a definitive history of the Santa Fe's motorcar era. While THE DOODLEBUGS does have many rare and exciting photos (including 24 pages of color!) it also tells a story. . . the story of the cars; the story of the evolution; the story of the routes; and, the story of the search by the author. The rail-fan will find THE DOODLEBUGS of interest because of the photos - many of which have not been widely

circulated. The modeler will find THE DOODLEBUGS a great help because of the floor plans, basic data, and construction details visible in many of the photos. The nostalgia buff will find THE DOODLEBUGS an engrossing reading experience about a great and extensive period of our history which has all but vanished completely.

THE DOODLEBUGS. . . . . \$26.95



SANTA FE CAR AND LOCOMOTIVE PLANS FOR MODEL RAILROADERS



The plans and drawings contained in this book were prepared by the staff of Model Railroader Magazine for the Santa Fe Railway in 1953.

The book is a soft bound volume, 10 inches x 14 inches, and 44 pages which includes:

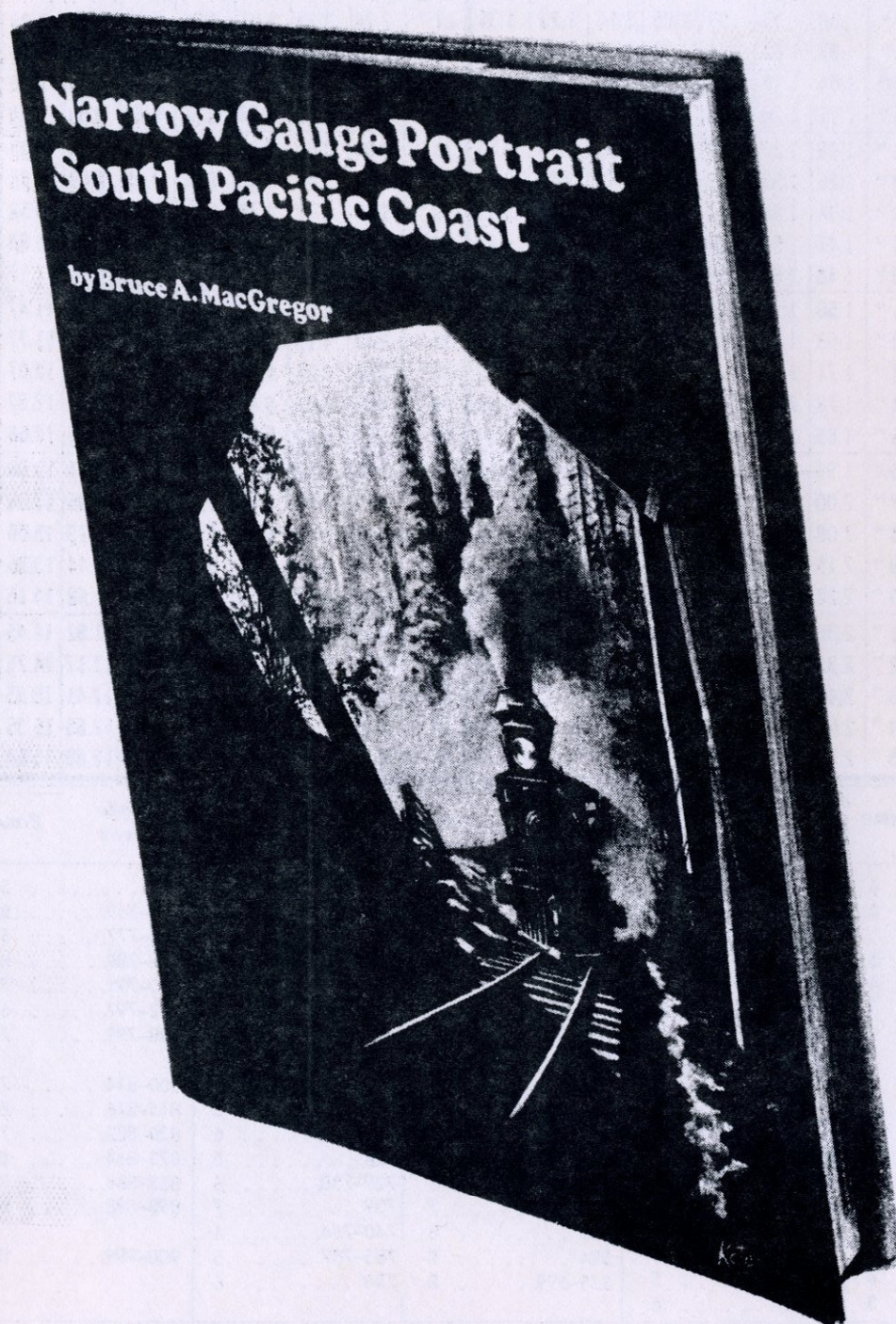
82 Prototype photographs  
9 Diesel locomotive drawings  
17 Passenger car and caboose drawings  
Plus Santa Fe paint scheme information

7 Steam Locomotive drawings  
9 Freight Car drawings

**\$5.95**



# NARROW GAUGE PORTRAIT SOUTH PACIFIC COAST



Here is an exciting sequel to the author's South Pacific Coast, published in 1968. Here it is again, that fascinating myth of a railroad, with 261 newly discovered photographs, plus more historical detail. A book to go with the first book but in many ways covering new ground, new frames of history simply lost to the first. A second generation document with a wealth of new information about a splendid narrow gauge railroad that passed through the east San Francisco Bay area and climbed over the high hills to the Santa Cruz coast.

200 pages, 8 1/2 X 11, hardbound, photos. maps and drawings.

\$16.50



All prices, except where noted, are F.O.B. Homestead, Florida. Please allow sufficient amount for postage and insurance. Most orders are shipped via UPS, as they provide fast, dependable service. Larger orders are sent truck freight collect. Assembled freight trucks are shipped in cartons via UPS.



Crating charges are as follows:

F & GP type Diesels	\$75.00
Gondolas	\$40.00
Passenger Cars	\$60.00
Cabooses	\$50.00

Florida residents add 4% state sales tax.

ANY FRACTION OF A POUND OVER THE WEIGHT SHOWN TAKES THE NEXT HIGHER RATE															
WEIGHT NOT TO EXCEED	RATES TO							WEIGHT NOT TO EXCEED	RATES TO						
	ZONE 2	ZONE 3	ZONE 4	ZONE 5	ZONE 6	ZONE 7	ZONE 8		ZONE 2	ZONE 3	ZONE 4	ZONE 5	ZONE 6	ZONE 7	ZONE 8
1lb.	\$82	\$84	\$87	\$90	\$94	\$99	\$1.04	26lb.	\$2.67	\$3.14	\$3.89	\$4.70	\$5.87	\$7.06	\$8.49
2 "	.89	.93	.99	1.05	1.14	1.23	1.34	27 "	2.74	3.23	4.01	4.85	6.06	7.31	8.79
3 "	.97	1.02	1.11	1.20	1.34	1.47	1.64	28 "	2.82	3.32	4.13	5.00	6.26	7.55	9.09
4 "	1.04	1.11	1.23	1.35	1.53	1.72	1.94	29 "	2.89	3.41	4.25	5.15	6.46	7.79	9.39
5 "	1.11	1.20	1.35	1.50	1.73	1.96	2.23	30 "	2.96	3.50	4.37	5.30	6.65	8.03	9.68
6 "	1.19	1.30	1.47	1.66	1.93	2.20	2.53	31 "	3.04	3.60	4.50	5.46	6.85	8.28	9.98
7 "	1.26	1.39	1.59	1.81	2.12	2.45	2.83	32 "	3.11	3.69	4.62	5.61	7.05	8.52	10.28
8 "	1.34	1.48	1.71	1.96	2.32	2.69	3.13	33 "	3.19	3.78	4.74	5.76	7.25	8.76	10.58
9 "	1.41	1.57	1.83	2.11	2.52	2.93	3.43	34 "	3.26	3.87	4.86	5.91	7.44	9.01	10.88
10 "	1.48	1.66	1.95	2.26	2.71	3.17	3.72	35 "	3.33	3.96	4.98	6.06	7.64	9.25	11.17
11 "	1.56	1.76	2.08	2.42	2.91	3.42	4.02	36 "	3.41	4.06	5.10	6.22	7.84	9.49	11.47
12 "	1.63	1.85	2.20	2.57	3.11	3.66	4.32	37 "	3.48	4.15	5.22	6.37	8.03	9.74	11.77
13 "	1.71	1.94	2.32	2.72	3.31	3.90	4.62	38 "	3.56	4.24	5.34	6.52	8.23	9.98	12.07
14 "	1.78	2.03	2.44	2.87	3.50	4.15	4.92	39 "	3.63	4.33	5.46	6.67	8.43	10.22	12.37
15 "	1.85	2.12	2.56	3.02	3.70	4.39	5.21	40 "	3.70	4.42	5.58	6.82	8.62	10.46	12.66
16 "	1.93	2.22	2.68	3.18	3.90	4.63	5.51	41 "	3.78	4.52	5.71	6.98	8.82	10.71	12.96
17 "	2.00	2.31	2.80	3.33	4.09	4.88	5.81	42 "	3.85	4.61	5.83	7.13	9.02	10.95	13.26
18 "	2.08	2.40	2.92	3.48	4.29	5.12	6.11	43 "	3.93	4.70	5.95	7.28	9.22	11.19	13.56
19 "	2.15	2.49	3.04	3.63	4.49	5.36	6.41	44 "	4.00	4.79	6.07	7.43	9.41	11.44	13.86
20 "	2.22	2.58	3.16	3.78	4.68	5.60	6.70	45 "	4.07	4.88	6.19	7.58	9.61	11.68	14.15
21 "	2.30	2.68	3.29	3.94	4.88	5.85	7.00	46 "	4.15	4.98	6.31	7.74	9.81	11.92	14.45
22 "	2.37	2.77	3.41	4.09	5.08	6.09	7.30	47 "	4.22	5.07	6.43	7.89	10.00	12.17	14.75
23 "	2.45	2.86	3.53	4.24	5.28	6.33	7.60	48 "	4.30	5.16	6.55	8.04	10.20	12.41	15.05
24 "	2.52	2.95	3.65	4.39	5.47	6.58	7.90	49 "	4.37	5.25	6.67	8.19	10.40	12.65	15.35
25 "	2.59	3.04	3.77	4.54	5.67	6.82	8.19	50 "	4.44	5.34	6.79	8.34	10.59	12.89	15.64

Zip Code Prefixes	Zone	Zip Code Prefixes	Zone	Zip Code Prefixes	Zone	Zip Code Prefixes	Zone	Zip Code Prefixes	Zone	Zip Code Prefixes	Zone
006-043. ....	6	193-196. ....	6	330-333. ....	1	474-478. ....	5	600-628. ....	6	759. ....	5
044. ....	7	197-199. ....	5	334. ....	2	479-497. ....	6	629. ....	5	760-769. ....	6
045. ....	6			335-338. ....	3	498-499. ....	7	630-636. ....	6	770-777. ....	5
046-047. ....	7	200-283. ....	5	339. ....	2			637-639. ....	5	778-789. ....	6
048. ....	6	284. ....	4	350-359. ....	5	500-508. ....	6	640-676. ....	6	790-791. ....	7
049. ....	7	285-289. ....	5	360-361. ....	4	510-513. ....	7	677-679. ....	7	792-797. ....	6
050-079. ....	6	290-292. ....	4	362. ....	5	514-539. ....	6	680-685. ....	6	798-799. ....	7
080-084. ....	5	293. ....	5	363-368. ....	4	540. ....	7	686-693. ....	7		
085-098. ....	6	294-295. ....	4	369-397. ....	5	541-544. ....	6			800-814. ....	7
		296-297. ....	5			545. ....	7	700-725. ....	5	815-816. ....	8
100-149. ....	6	298-299. ....	4	400-432. ....	5	546. ....	6	726-727. ....	6	820-822. ....	7
150-156. ....	5			433-436. ....	6	547-548. ....	7	728. ....	5	823-864. ....	8
157-158. ....	6	300-304. ....	4	437-439. ....	5	549. ....	6	729-738. ....	6	865-884. ....	7
159. ....	5	305. ....	5	440-449. ....	6	550-582. ....	7	739. ....	7	890-898. ....	8
160-169. ....	6	306. ....	4	450-457. ....	5	583. ....	8	740-754. ....	6		
170-174. ....	5	307. ....	5	458-469. ....	6	584. ....	7	755-757. ....	5	900-999. ....	8
175-189. ....	6	308-325. ....	4	470-472. ....	5	585-599. ....	8	758. ....	6		
190-191. ....	5	326-329. ....	3	473. ....	6						



## KOSTER'S MINIATURE RAILROAD SUPPLIES

**HOMESTEAD, FLA. 33030**

NAME \_\_\_\_\_  
STREET ADDRESS \_\_\_\_\_  
CITY \_\_\_\_\_ STATE \_\_\_\_\_ ZIP \_\_\_\_\_

DATE \_\_\_\_\_  
HOW SHALL WE SHIP? \_\_\_\_\_  
PARCEL POST ☐  
GREYHOUND ☐ UPS ☒  
TRUCK FREIGHT ☐

[illegible]

**On all orders of under \$5.00, there is a 25¢ handling charge in addition to the postage.**



# BOOKS FOR YOUR MINIATURE RAILROAD LIBRARY

Listed below are books that we stock to assist you with your miniature railroading. Book orders over \$10 will be shipped postpaid.

<u>TITLE</u>	<u>PRICE</u>	<u>TITLE</u>	<u>PRICE</u>
All About Signals	\$2.00	Modern Loco Handbook	5.00
American Loco Engineering	9.50	Narrow Gauge Portrait	16.50
American Railroad, 1874	1.00	Railroad Potpourri	4.50
American Railroad in Transition	6.98	Railroad Station Planbook	4.00
*Bridges & Buildings for Model Railroads	3.00	Railroads U.S.A.	5.00
*Bridge & Trestle Handbook	5.95	Railways (Pictorial History)	3.98
Car Builders Dictionary 1888	19.95	Raritan	15.00
Car Builders Dictionary 1879	7.50	Recent Locos of 1886	34.95
Car Builders Dictionary 1906	29.95	Santa Fe Planbook	5.95
Car Builders Cyclopedia of 1940	50.00	So You Want to Build a Live Steam Locomotive	17.95
Climax Geared Locomotives	3.50	Steam's Finest Hour	25.00
Compendium of Signals	3.95	Steel Rails to Victory	7.98
Diesel - Electric Loco Manual	5.00	Story of Eddystone (The)	9.95
Doodlebugs (The)	26.95	Southern Planbook (The)	7.50
Early Motive Power of B & O	8.95	Three Barrels of Steam	14.50
*Easy to Build Model Railroad Freight Cars	3.00	*Trackwork Handbook	5.95
*Easy to Build Model Railroad Structures	3.50	*Traction Guide Book	3.50
Elec. Locos. (Pict. History)	4.98	Union Pacific Planbook (The)	12.50
Electric Railway Dictionary	19.95	World of Model Trains	7.95
57 Maintenance of Way Plans	3.00		
History of Baldwin Loco Works	3.50		
Iron Horse (The)	9.95		
Large-Scale Model Railroading	10.00		
Loco Dictionary of 1906	24.95		
Loco Cyclopedia of 1925	49.95		

We are in a position to supply most books on railroading published in the U.S. that you may be interested in. Tell us your needs and we will advise cost and approximate delivery date.

\*These books are written for HO gauge; however, much of the information will be helpful in larger scales.



