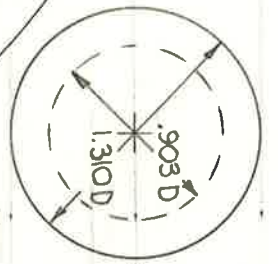
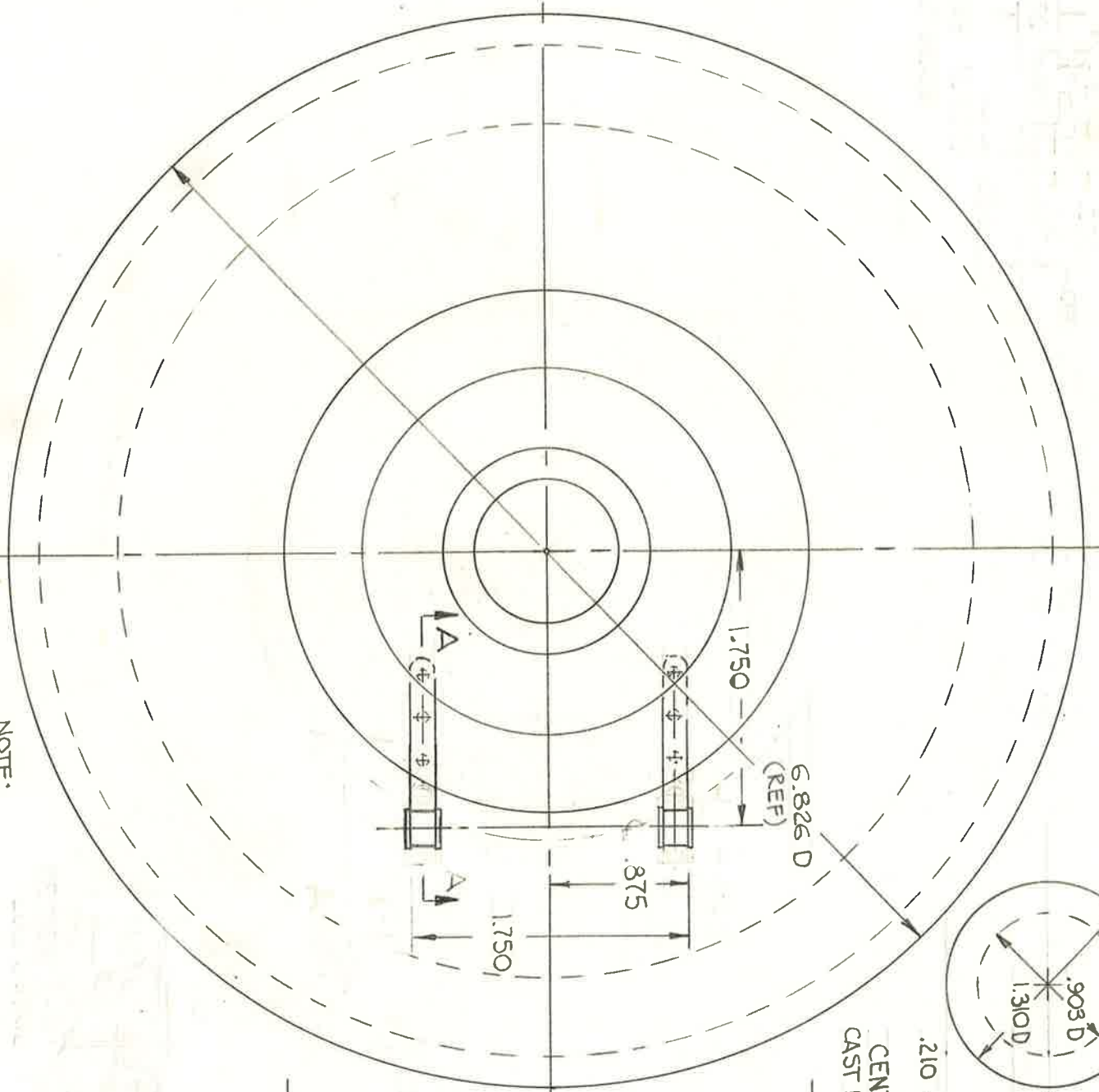
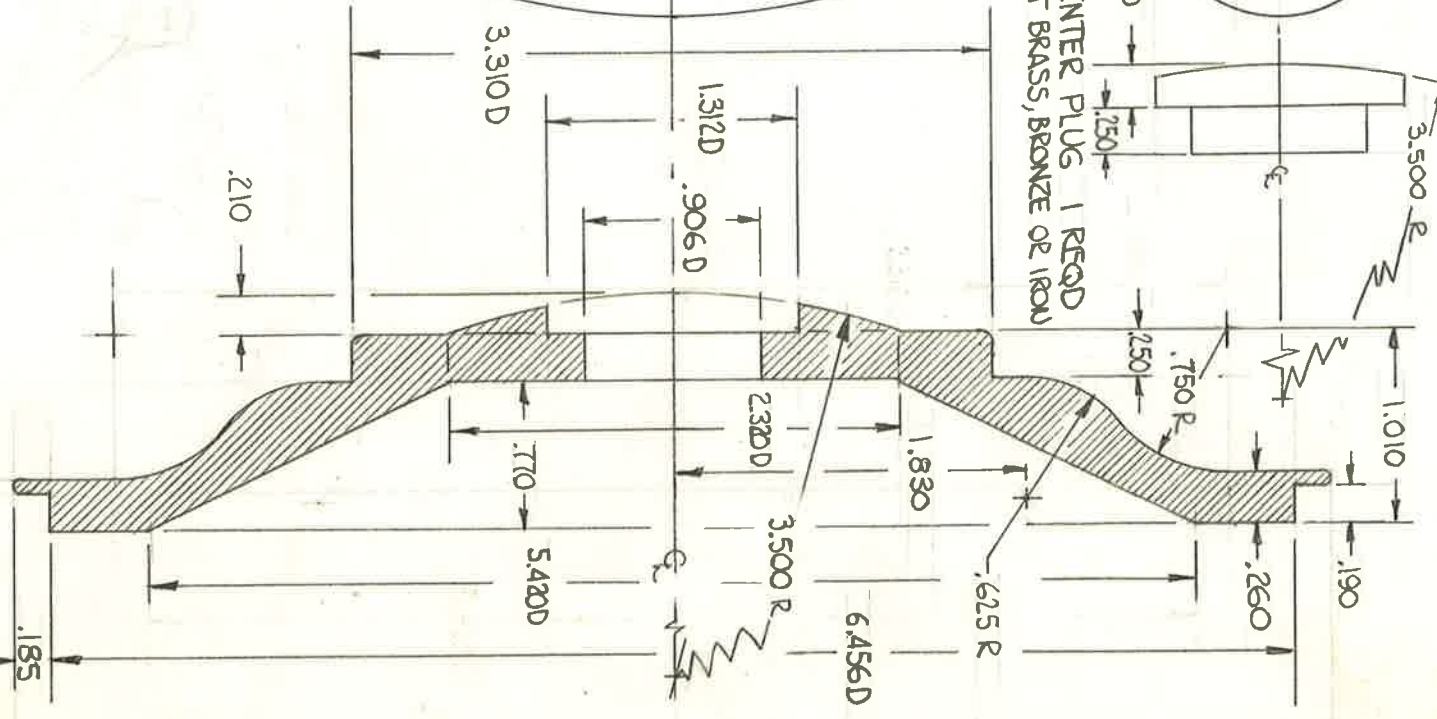


FRONT 1 REQD
 CAST BRASS, IRON, OR BRONZE

NOTE:
 ALL DIMENSIONS SHOWN ARE
 FOR FINISHED PARTS



CENTER PLUG 1 REQD
 CAST BRASS, BRONZE OR IRON



SMOKE BOX FRONT CASTINGS
 B & O P-7 #5300 I.D. ALKIRE 1961