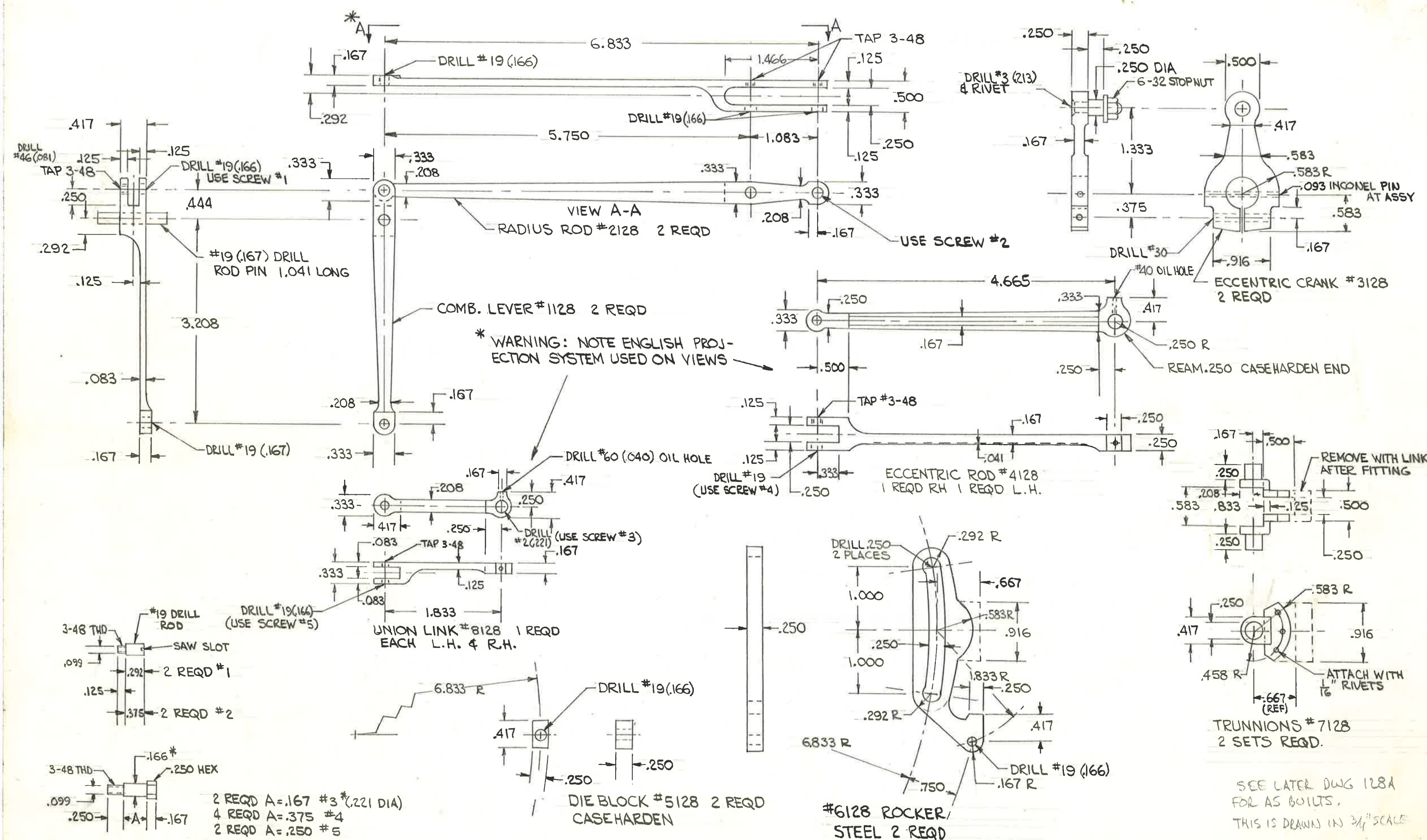


DWG #128 VALVE GEAR
DETAILS
1" B&O P7 I.D. ALKIRE 1960
SEE DWG #128A FOR B&O DIMS & AS BUILT



- 2 REQD A=.167 #3* (.221 DIA)
- 4 REQD A=.375 #4
- 2 REQD A=.250 #5

DIE BLOCK #5128 2 REQD CASEHARDEN

#6128 ROCKER/STEEL 2 REQD

TRUNNIONS #7128 2 SETS REQD.