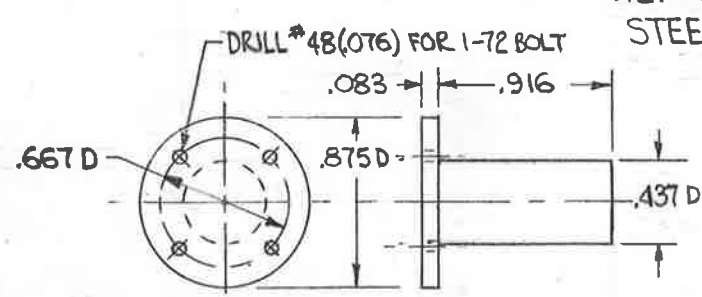
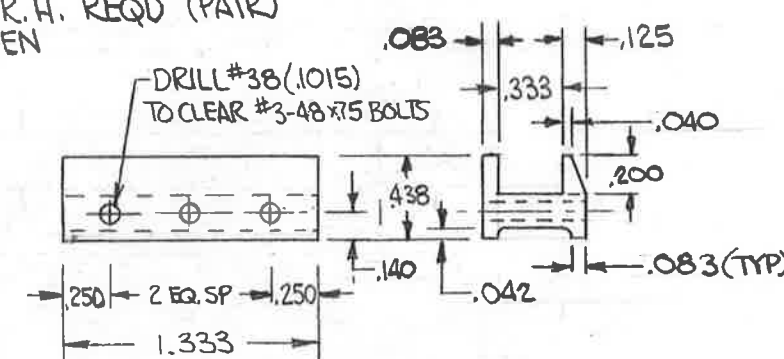


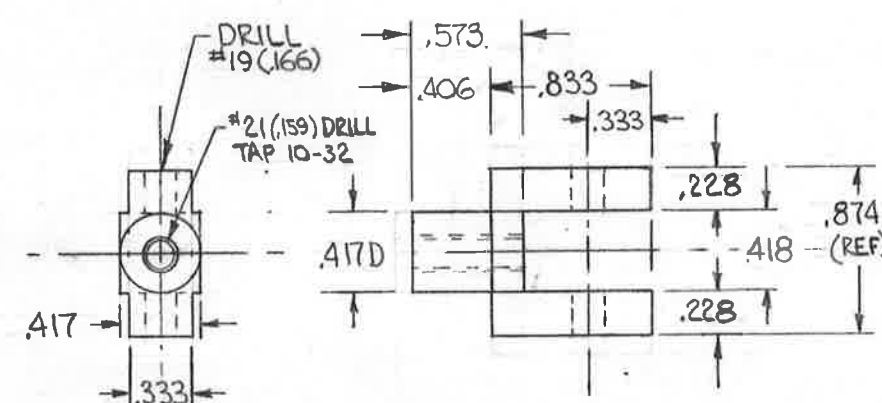
#1127 GUIDES 1 L.H. REQD (PAIR)
1 R.H. REQD (PAIR)
STEEL
CASE HARDEN



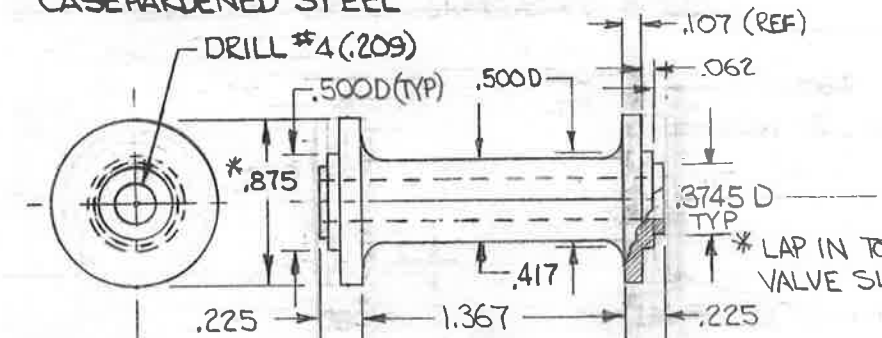
#3127 WRIST PIN 2 REQD STEEL - CASEHARDEN



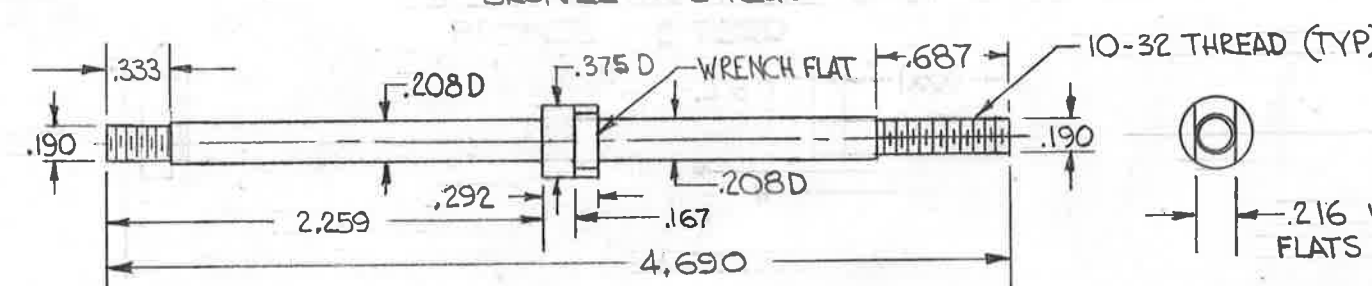
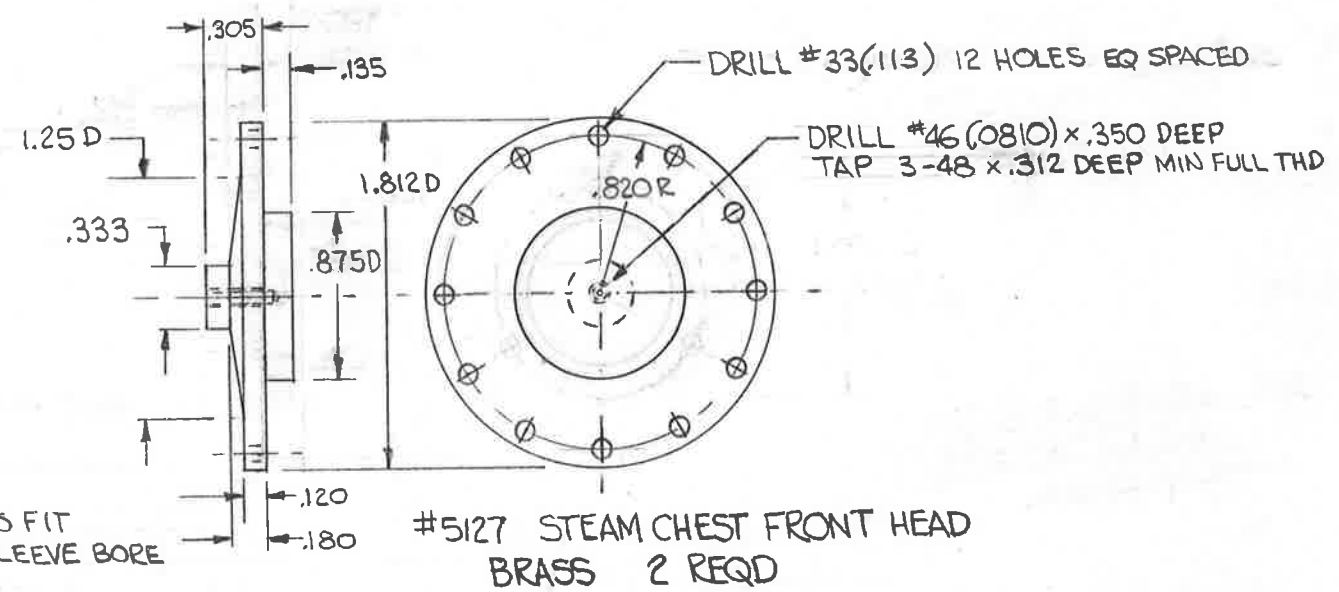
#4127 VALVE SPINDLE GUIDE 4 REQD
CASEHARDENED STEEL



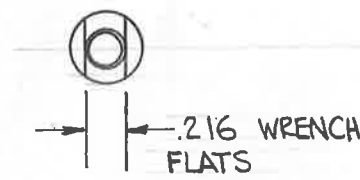
#8127 VALVE SPINDLE CROSS-HEAD
ALUM. ALLOY 2 REQD
OR CAST IRON



#6127 PISTON VALVE BODY
BRONZE 2 REQD



#7127 VALVE SPINDLE
STAINLESS STEEL 2 REQD



MAIN CROSS-HEAD GUIDES
DWG #127 PISTON VALVE DETAILS
B & O P7 #5300 1" I.D. ALKIRE '1961
"A" CHG 1-12-62 "B" CHG 8-23-62