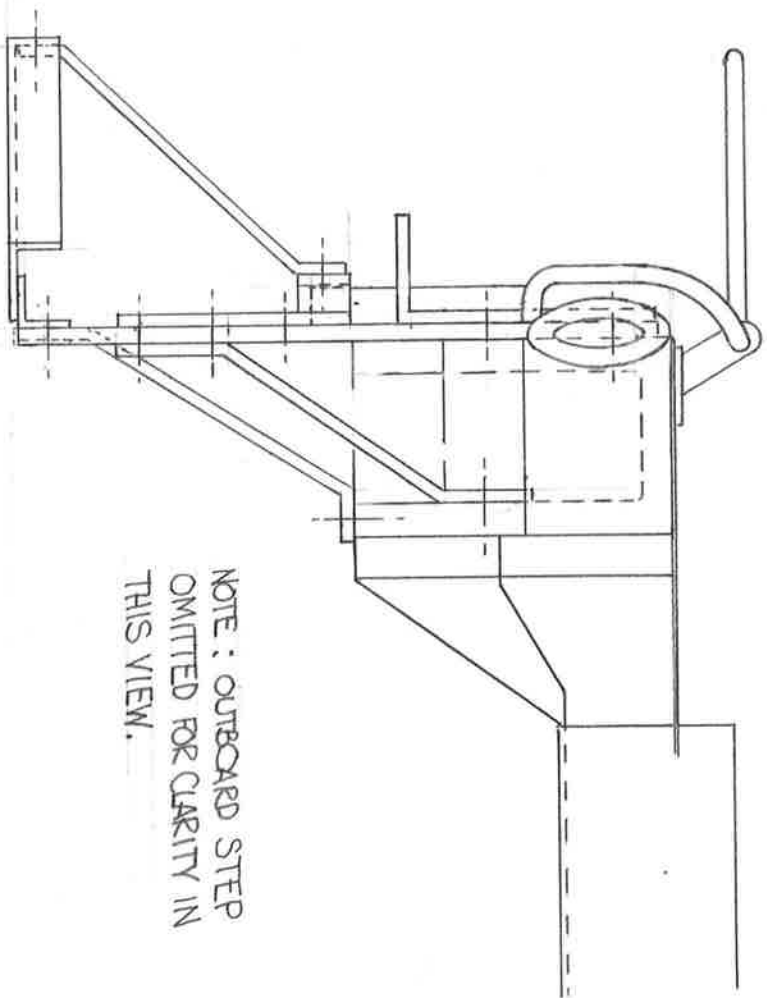


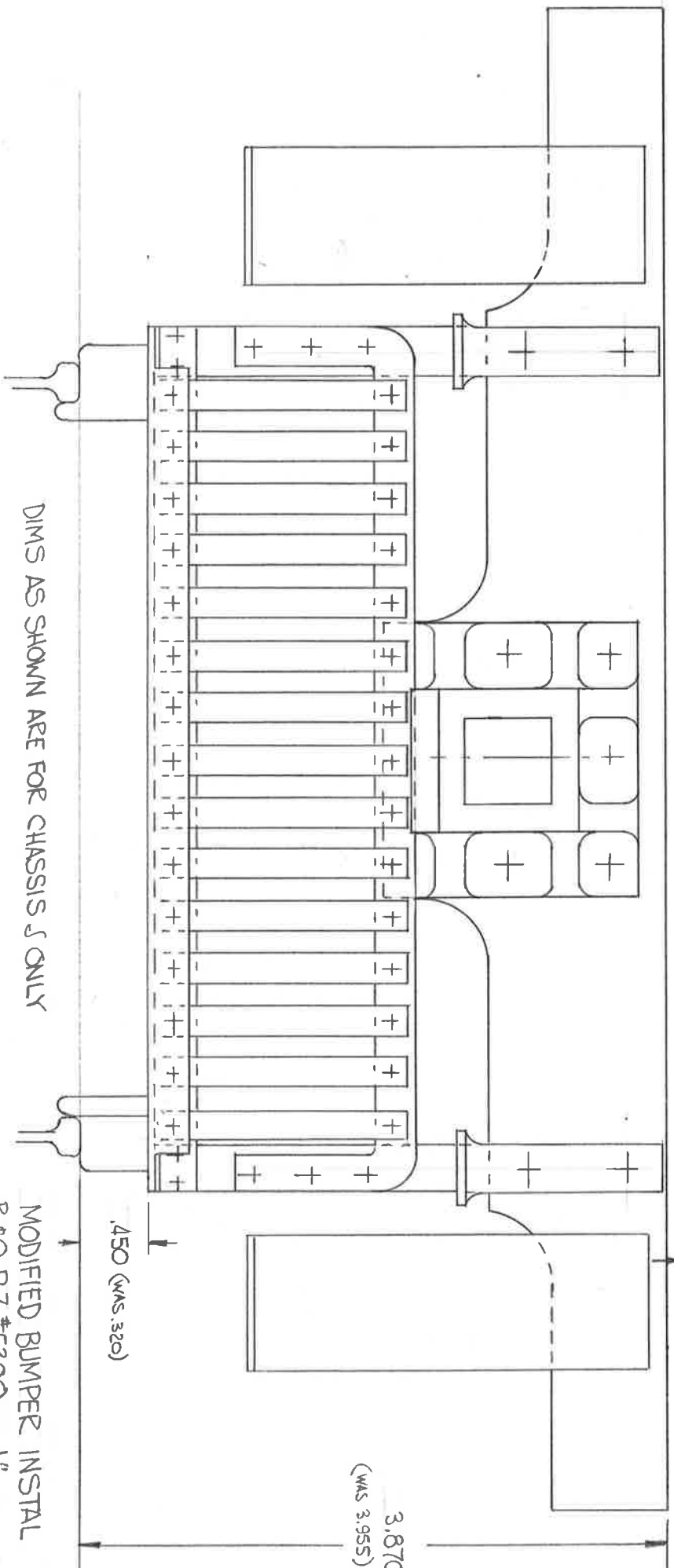
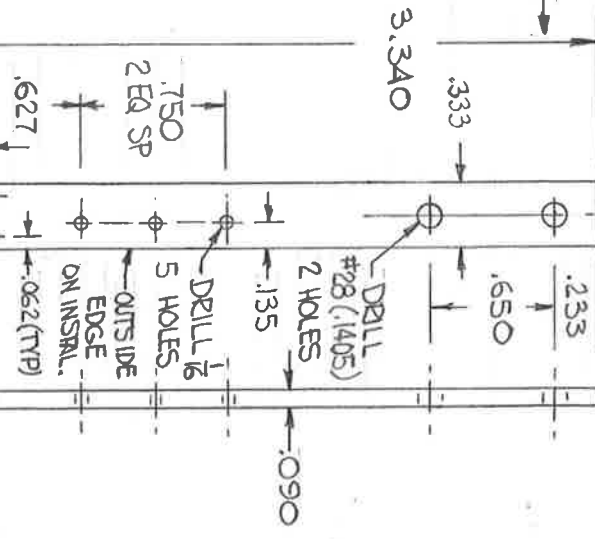
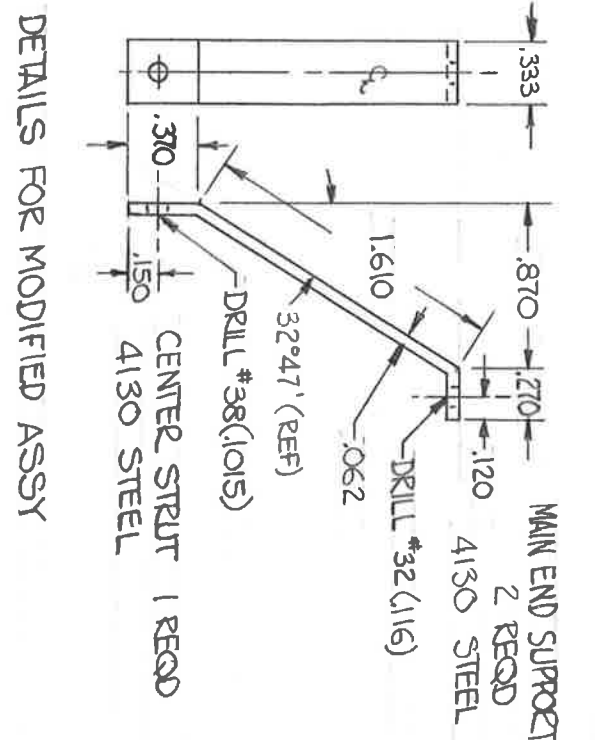
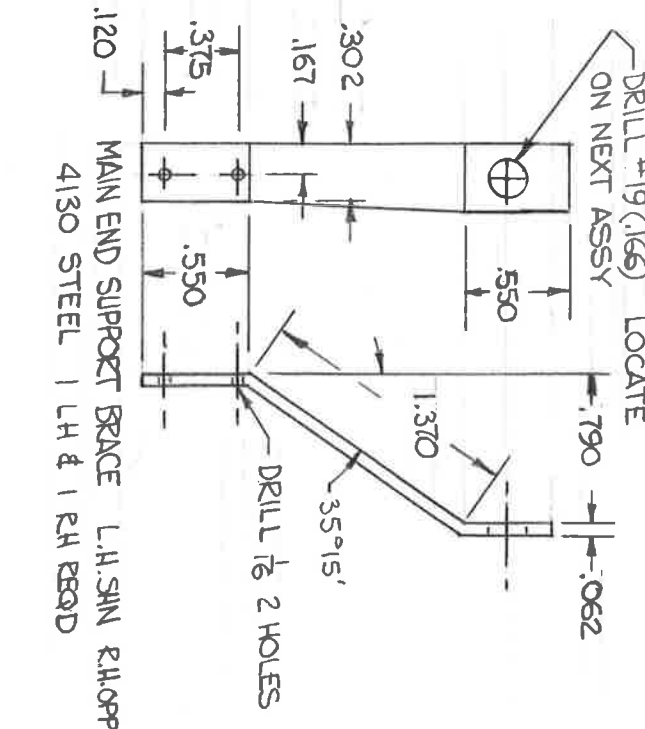
THREADED HOLES IN BUMPER BEAM & BRACKET
 0-80 BOLTS - DECK PLATE ATTACH DRILL $\frac{3}{4}$ " x .31 DEEP THRU 0-80
 2-56 BOLTS - LADDER BASE ATTACH DR $\frac{5}{16}$ " (.670) THRU THD 2-56
 (USE NUT UNDERNEATH TO LOCK BOLT)
 4-40 BOLTS - STRUT ATTACH. DRILL #43(.089) x $\frac{3}{8}$ " DEEP THD 4-40
 10-32 STUDS - FLAG HOLDER. DRILL #21(.159) x $\frac{3}{8}$ " DEEP THRU 10-32



NOTE : OUTBOARD STEP
OMTTED FOR CLARITY IN
THIS VIEW.

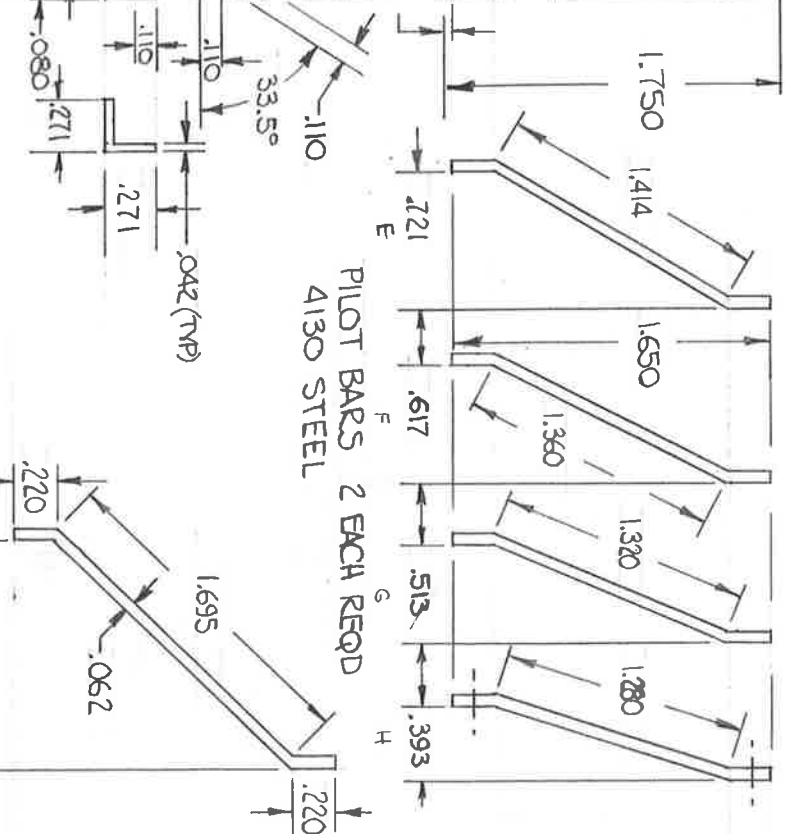
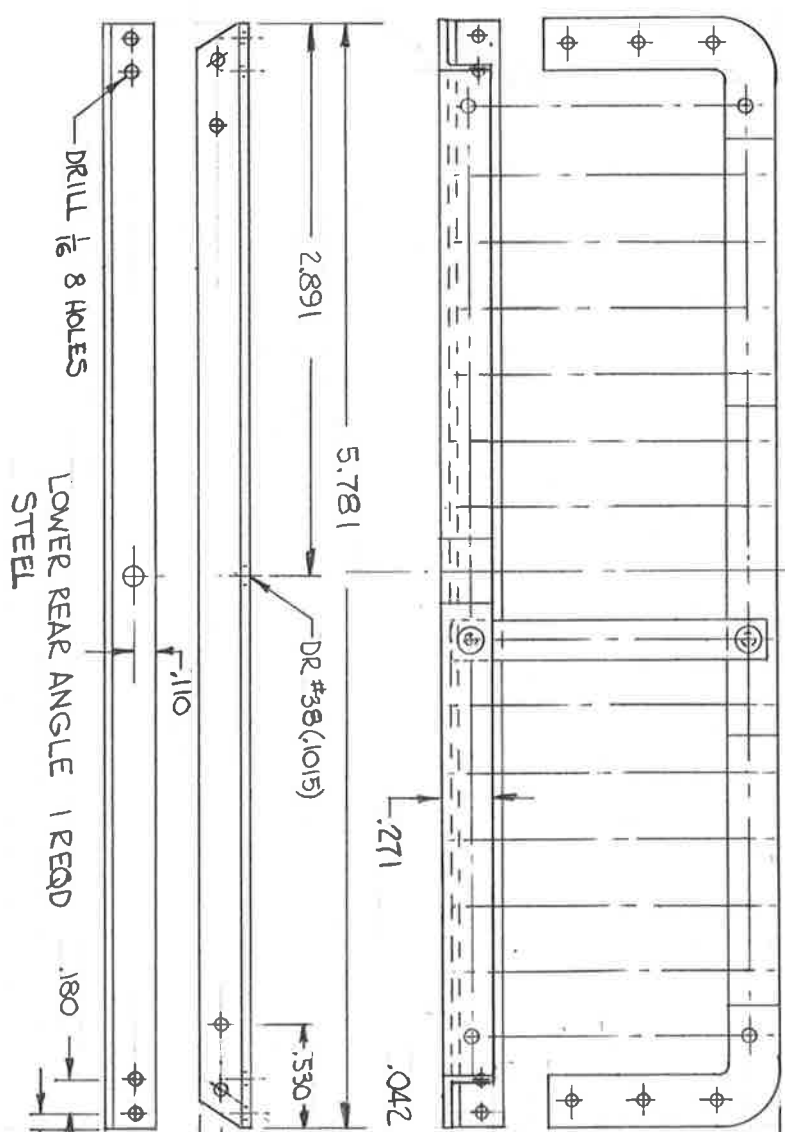
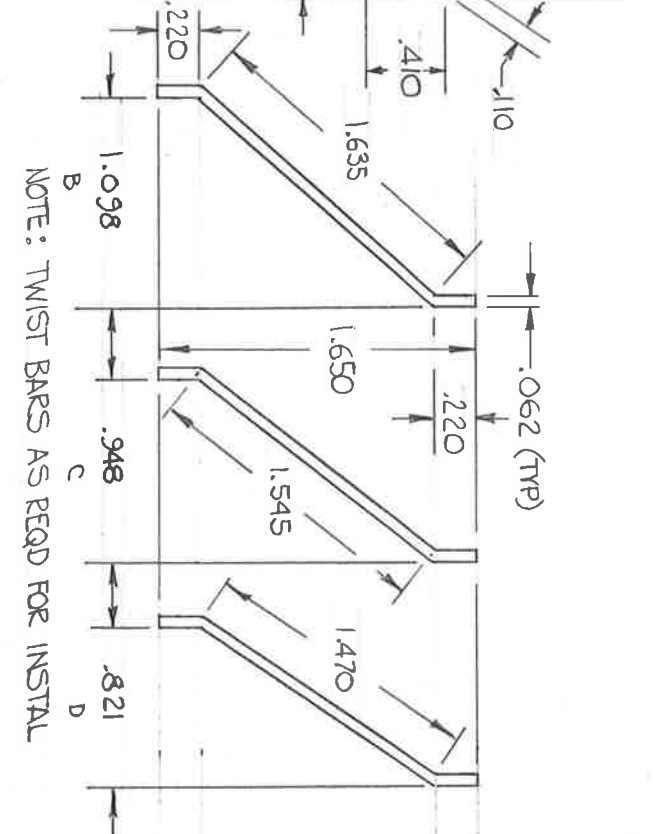
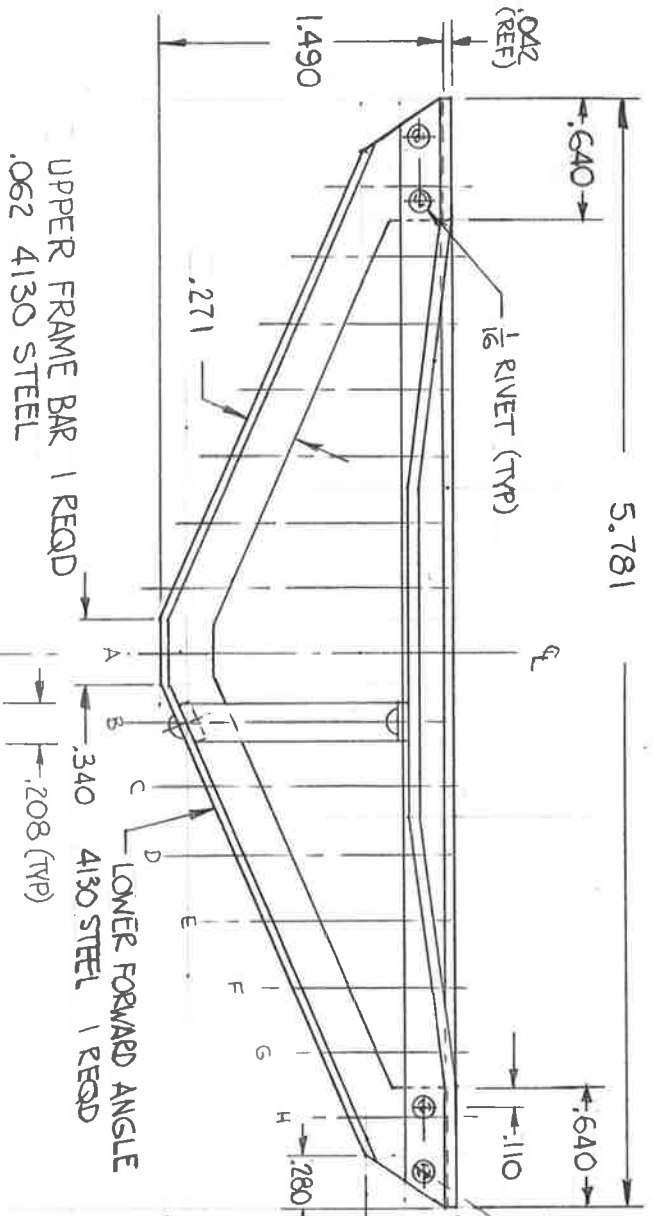
MODIFIED BUMPER INSTAL
B&O P-7 #5300 1"

8 OCT 1962 I. D. ALLEN

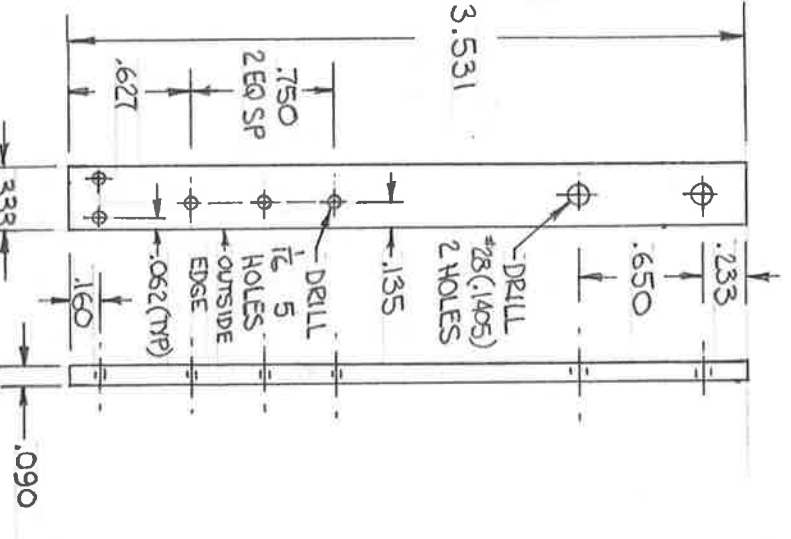
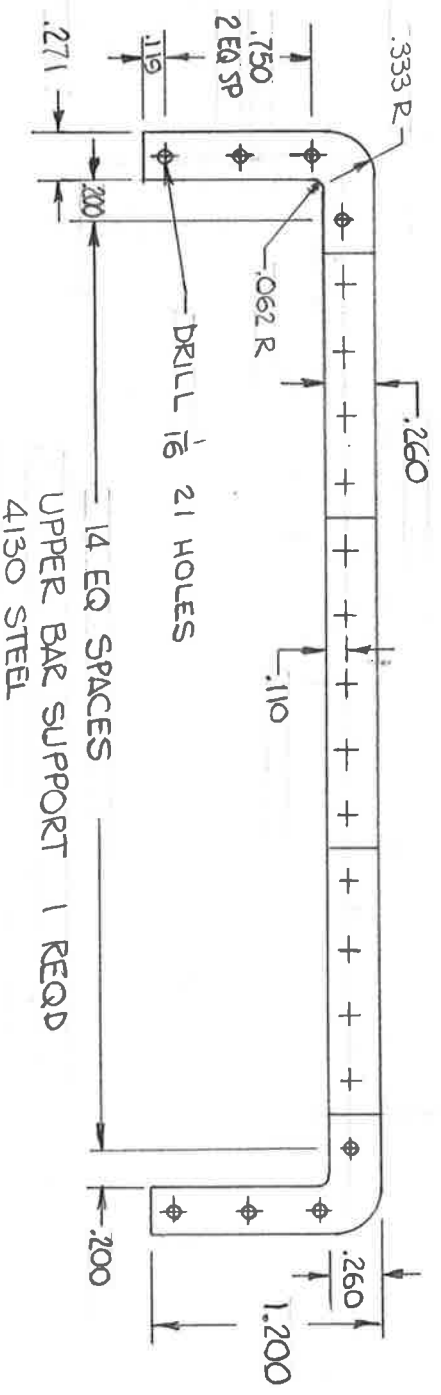
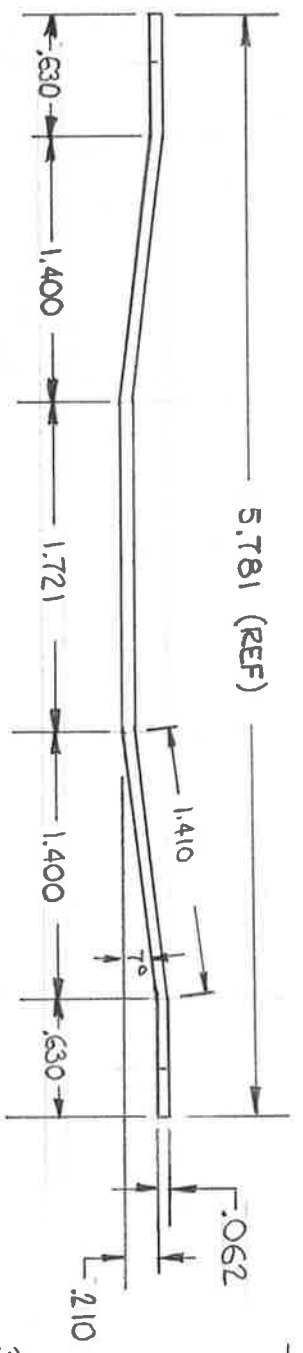


MODIFIED BUMPER INSTAL
 B&O P-7 #5300 1"
 8-OCT 1962 I.D. ALKIRE

DETAILS FOR MODIFIED ASSY



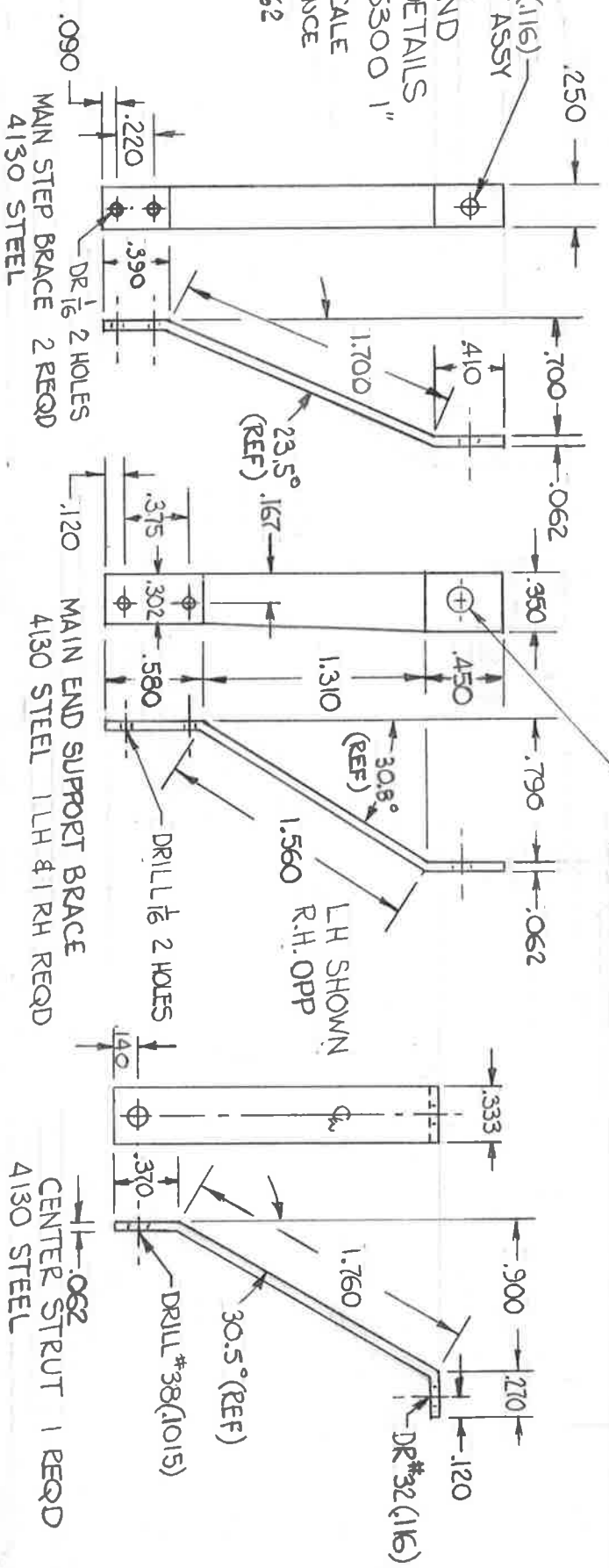
PILOT DETAILS
 B & O P-7 #5300 1"
 I.D. ALK/RE 1962

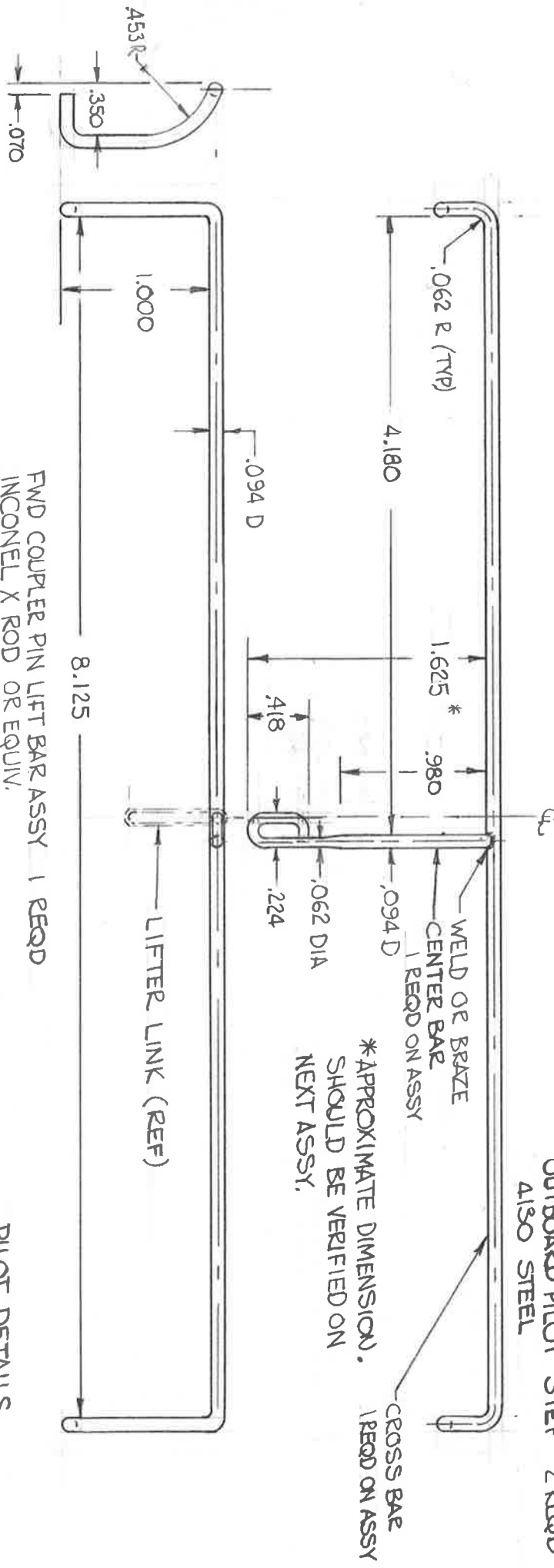
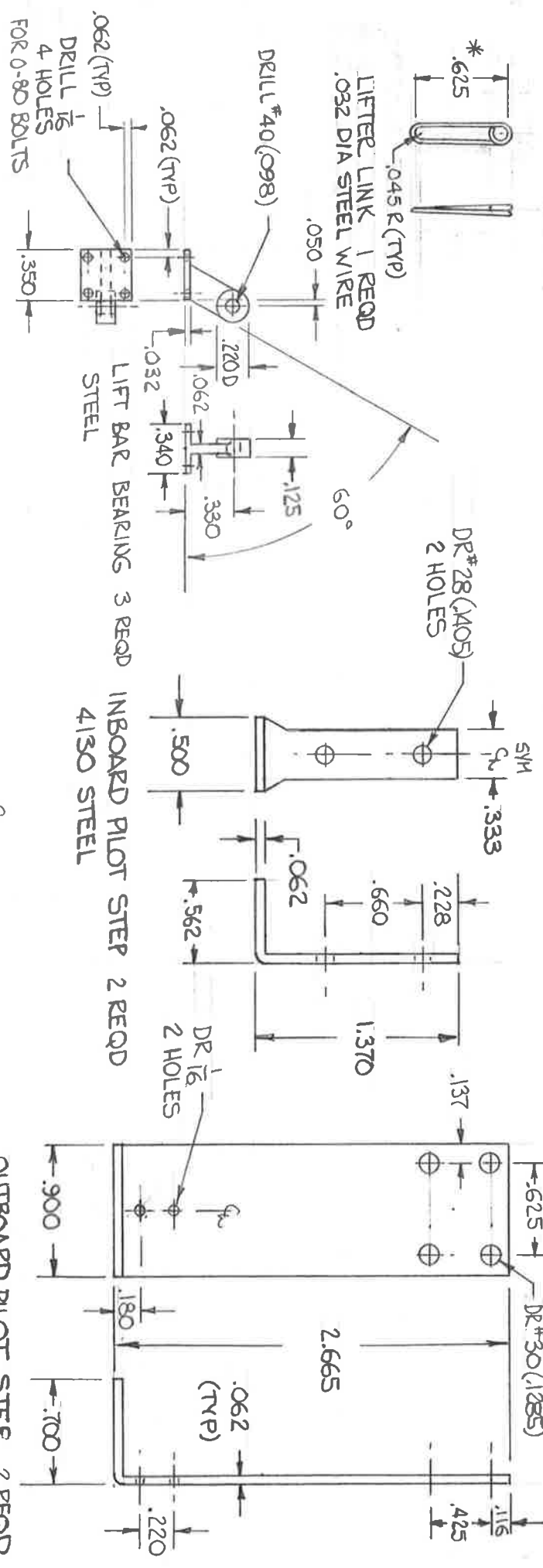


DRILL #32 (116) LOCATE ON NEXT ASSY

PILOT AND BUMPER DETAILS B & O P-7 #5300 1" FOR EXACT SCALE RAIL CLEARANCE

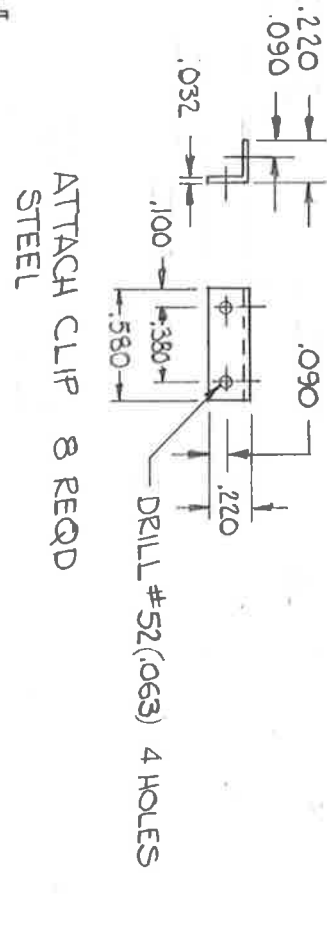
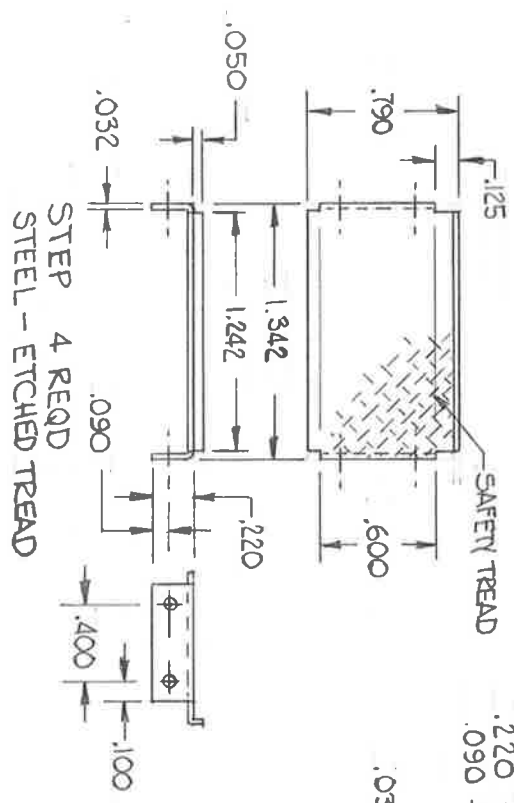
1.0 ALKIRZ 1962





FWD COUPLER PIN LIFT BAR ASSY 1 REQD
 INCONEL X ROD OR EQUIV.
 NOTE: INSTALL BEARINGS BEFORE MAKING
 FINAL BENDS IN CROSS BAR

PILOT DETAILS
 B&O P-7 #5300 1"
 I.D. ALKIRE 1962



FORWARD LADDER
B 40 P-7 #5300 1"
I.D. ALKIRE 1962

LADDER ASSY
2 REQD

