

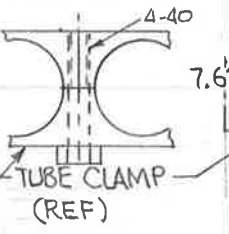
HOLE SCHEDULE

	A	B	C
X	.500 D	.500 D	
Y	28 (1405)	35 (1065)	THD 6-32 (1405)

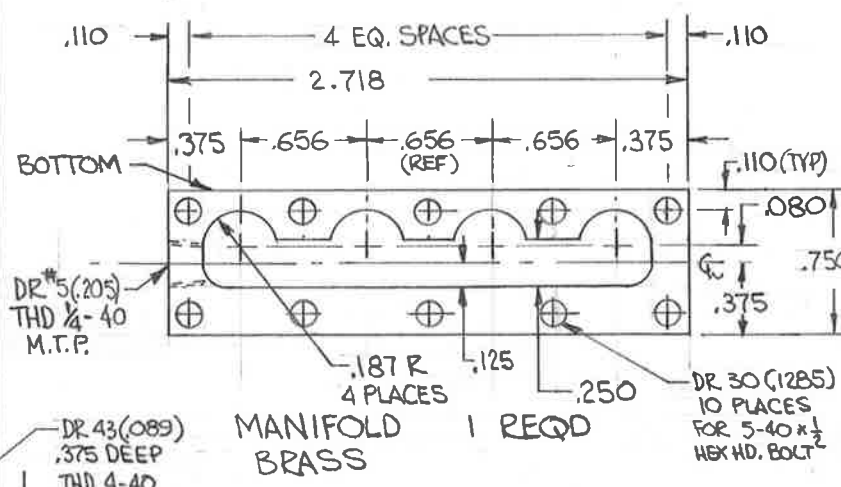
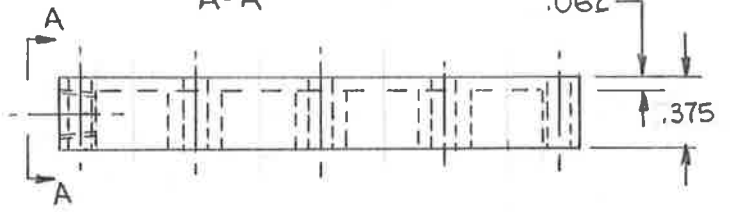
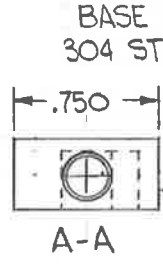
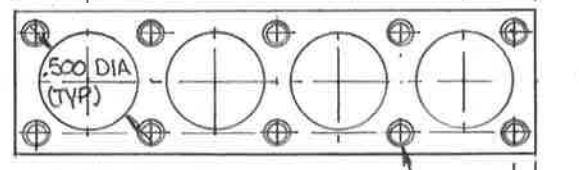
NOTE - FOR PLUG,  
MACHINE PLUG TO DIAM & COAT  
WITH DYKEM, USE 3 JAW CHUCK  
WITH .012 SHIM ON ONE JAW.  
MACHINE HIGH SPOT ON PLUG  
DOWN .003 & CHECK RUNOUT.

IF INSUFFICIENT USE  
THINNER SHIM.  
MILL, FILE, OR GRIND  
FLAT TAPER

TUBE 4 REQD  
LENGTHS AS SHN.  
ST STEEL  
.062 MAX WALL "t"



FDIM 7  
F - 349.2 ~  
G# - 415.3 ~  
B - 493.9 ~  
F - 698.0 ~



CHIME WHISTLE - UNDER CAB TYPE  
B&O P-7 #5300 1"  
I.D. ALKIRE 1965