

NOTE:
ALL CONTOURS SHOWN AT
OUTER ML. OF LAGGING

B.P.
2.000

BOILER

- STA 18.049
- STA 16.964
- STA 15.879
- STA 14.794
- STA 6.340 TO 13.709
- STA.300 TO 6.340

- STA 19.134 TO 27.249
- STA 27.249

UNDERSIDE OF R.B.
PLATES (TYP)

WP - 1.250 STA 4.890 TO 33.089

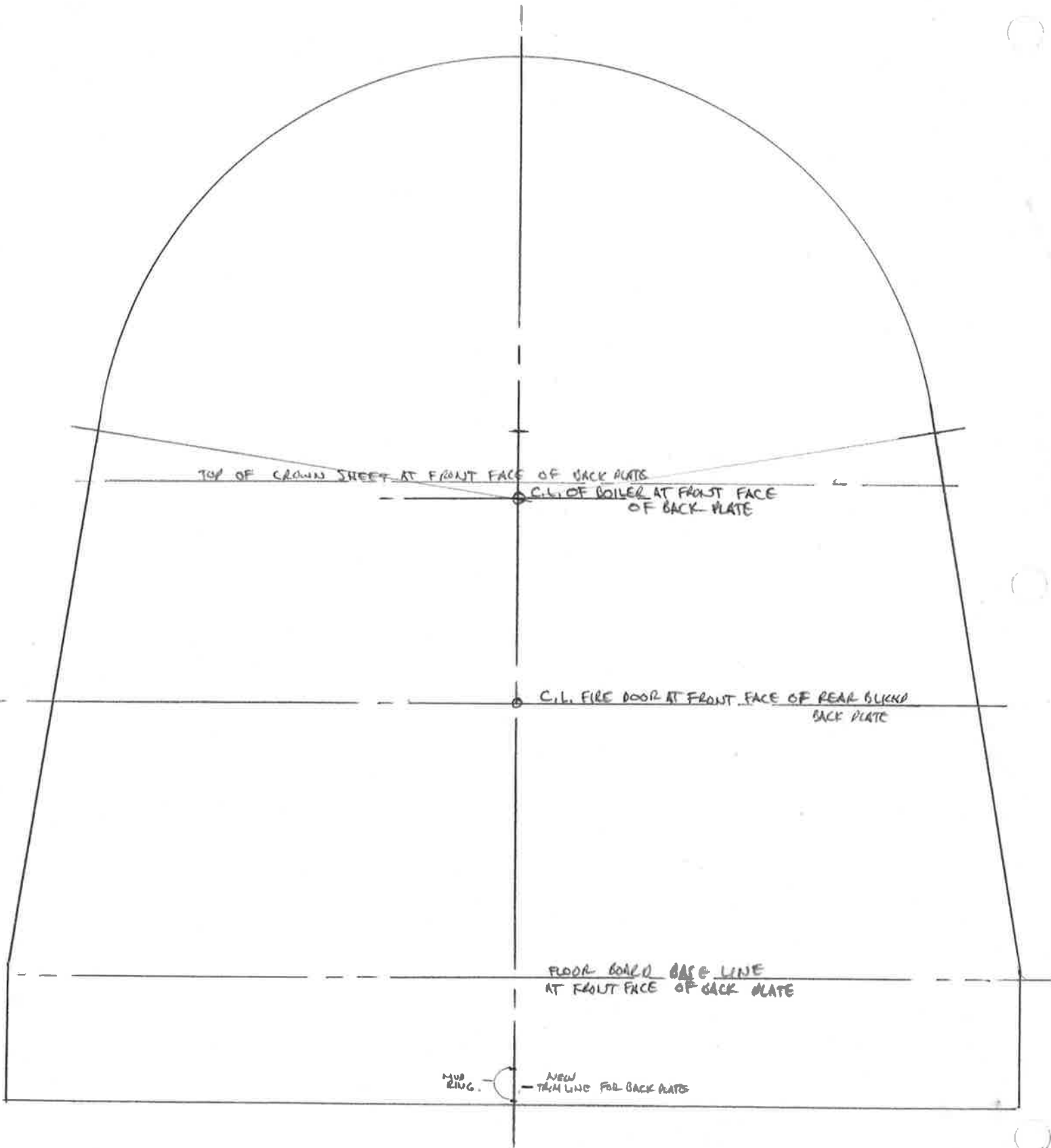
WP - 2.355 STA .300 TO 4.582

SMOKE BOX

WP - 3.630 STA 34.474 TO 43.694

RUNNING BOARD ML'S

NOTE: FRONT EDGE OF SMOKE BOX TUBE IS STA 0



TOP OF CROWN SHEET AT FRONT FACE OF BACK PLATE

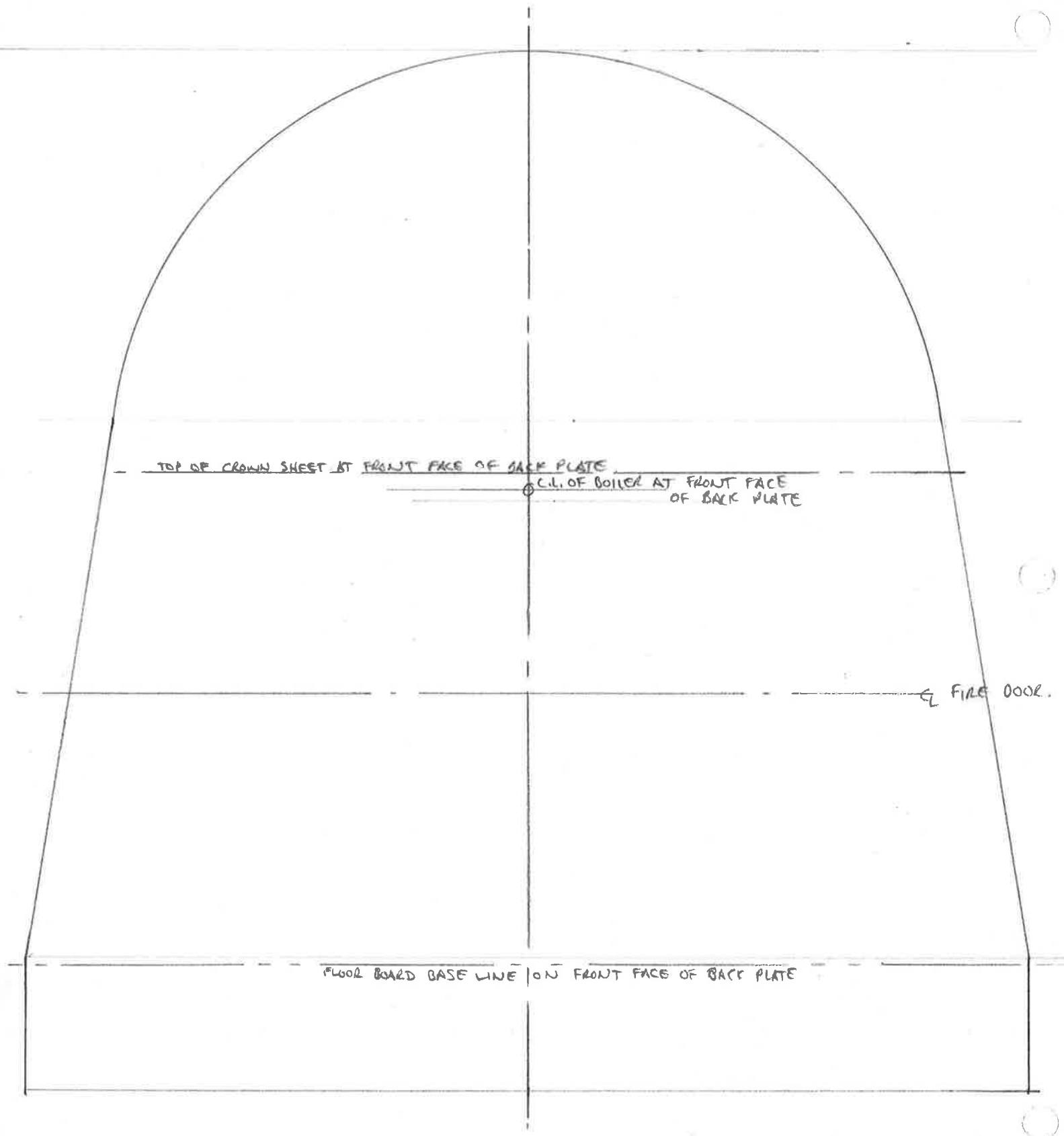
C.L. OF BOILER AT FRONT FACE OF BACK PLATE

C.L. FIRE DOOR AT FRONT FACE OF REAR BLIND BACK PLATE

FLOOR BOARD BASE LINE AT FRONT FACE OF BACK PLATE

2ND RING.

NEW TRIM LINE FOR BACK PLATE

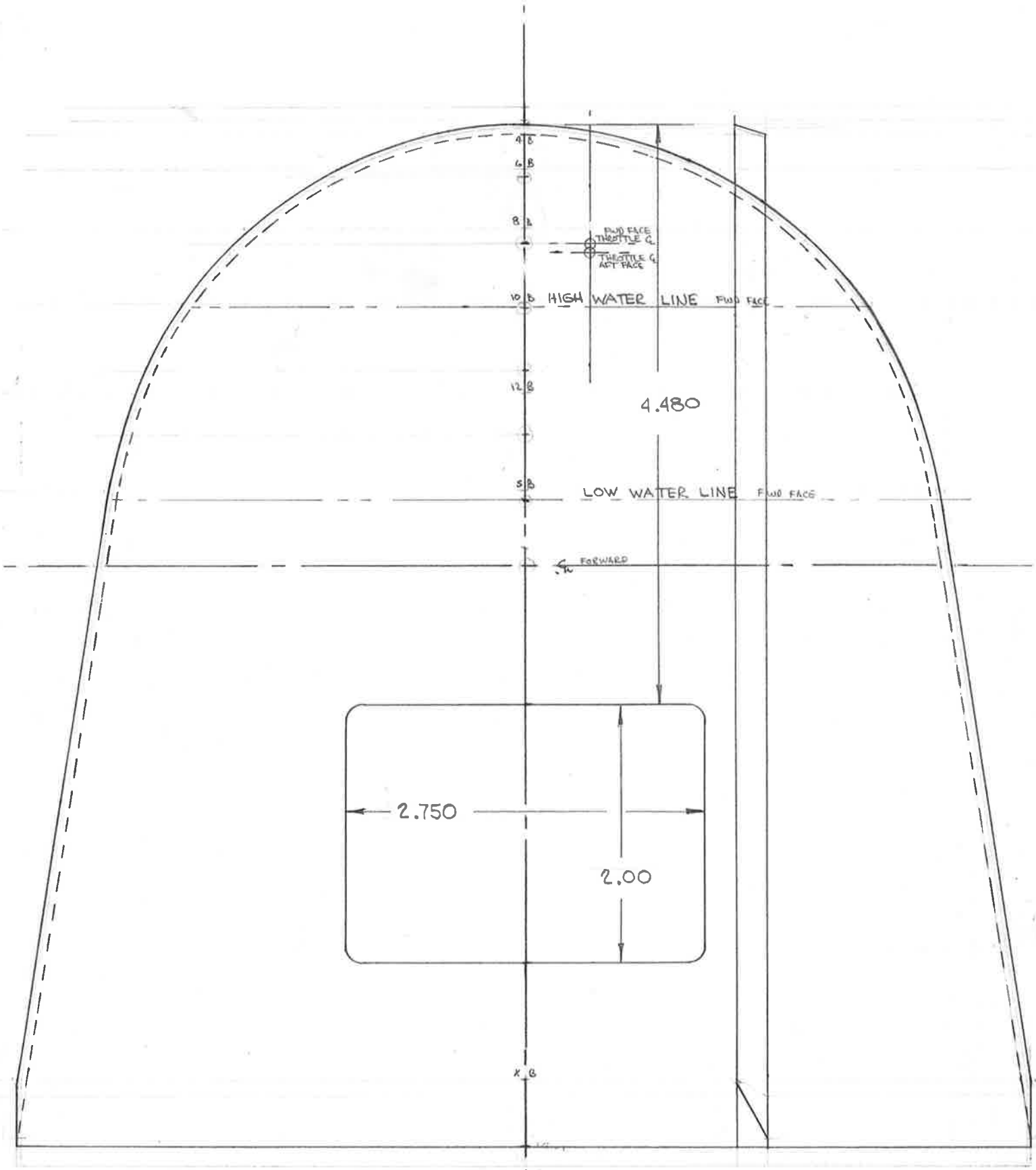


TOP OF CROWN SHEET AT FRONT FACE OF JACK PLATE

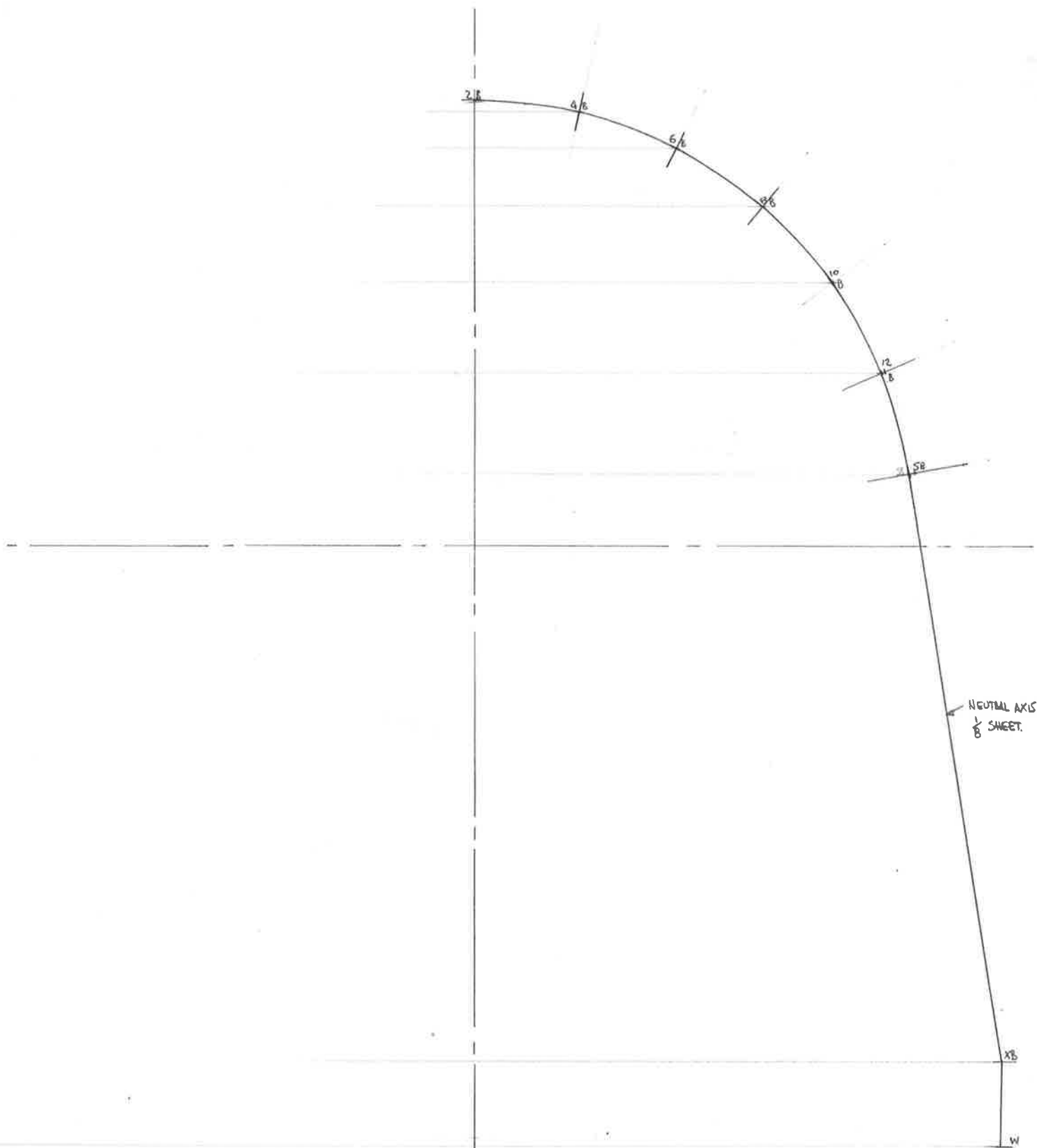
C.L. OF BOILER AT FRONT FACE OF JACK PLATE

FIRE DOOR.

FLOOR BOARD BASE LINE ON FRONT FACE OF JACK PLATE



TRUE VIEW
 B40 P-7 BOILER BACK HEAD
 10-30-62



NEUTRAL AXIS
1/8 SHEET.

VERTICAL PLANE PROJECTION
B & O P-7 BOILER BACK HEAD