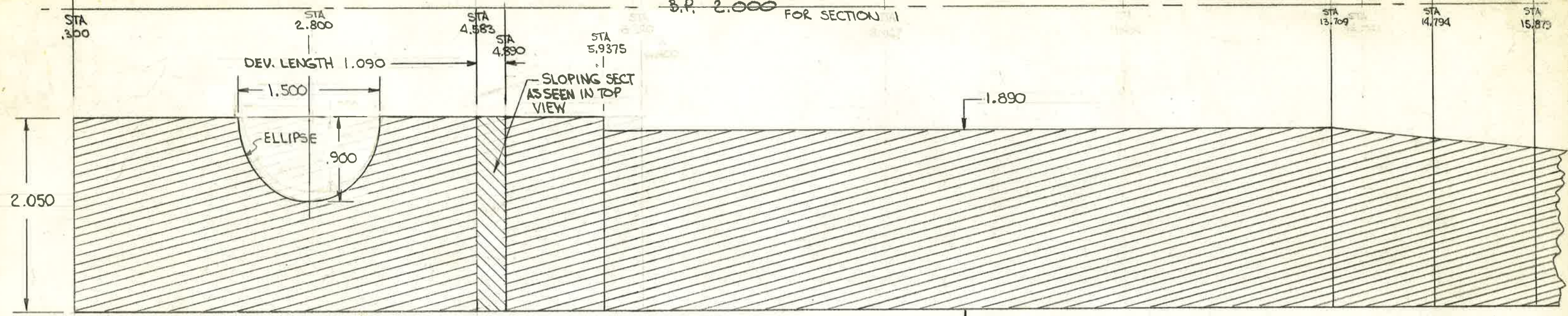
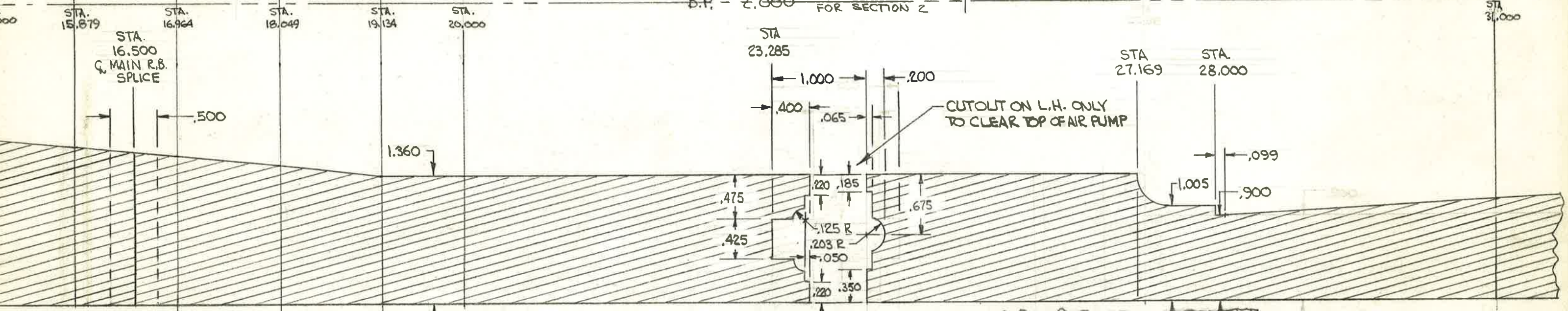


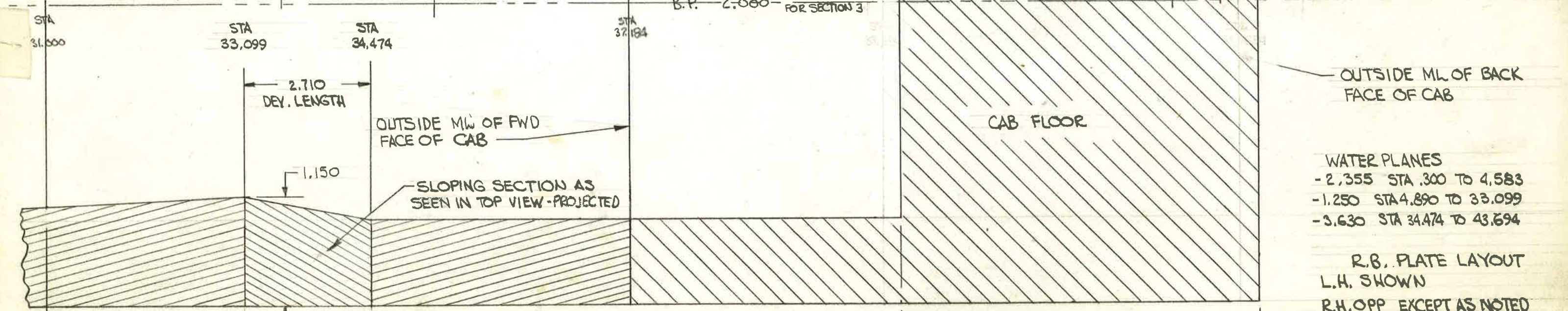
B.P. 2.000 FOR SECTION 1



B.P. - 2.000 FOR SECTION 2



B.P. - 2.000 FOR SECTION 3



- WATER PLANES
- 2.355 STA .300 TO 4.583
 - 1.250 STA 4.890 TO 33.099
 - 3.630 STA 34.474 TO 43.694

R.B. PLATE LAYOUT
 L.H. SHOWN
 R.H. OPP EXCEPT AS NOTED
 B&O P-7 5300 1"
 I.D. ALKIRE 1961

STA. 40.100

STA 43.881