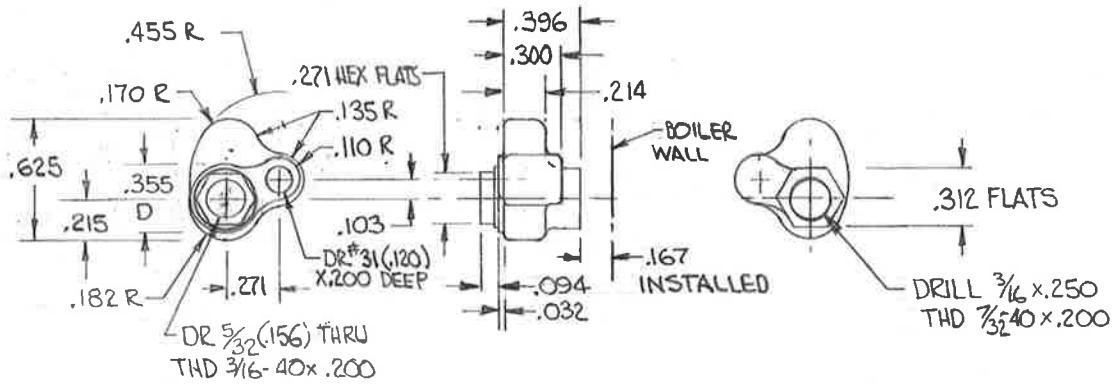
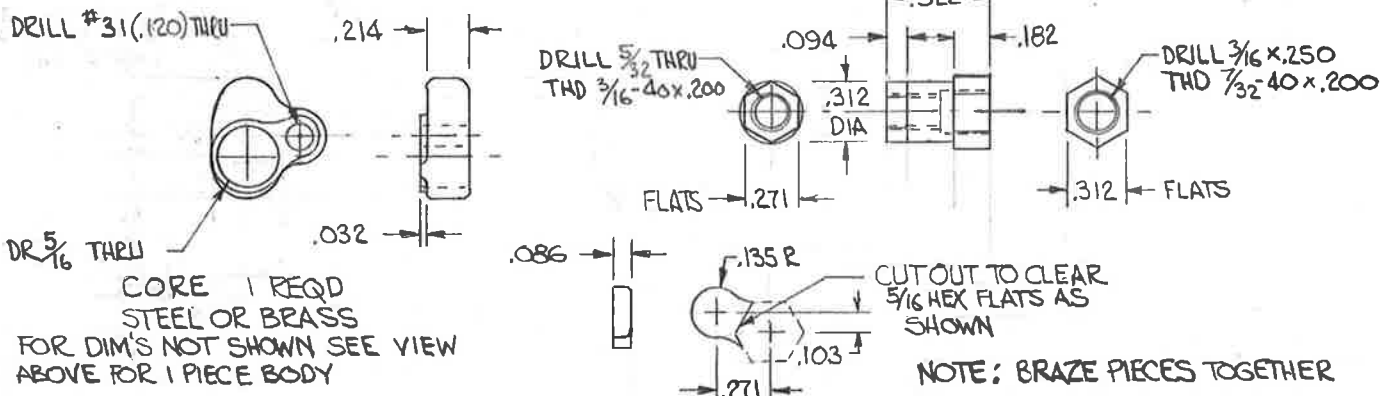


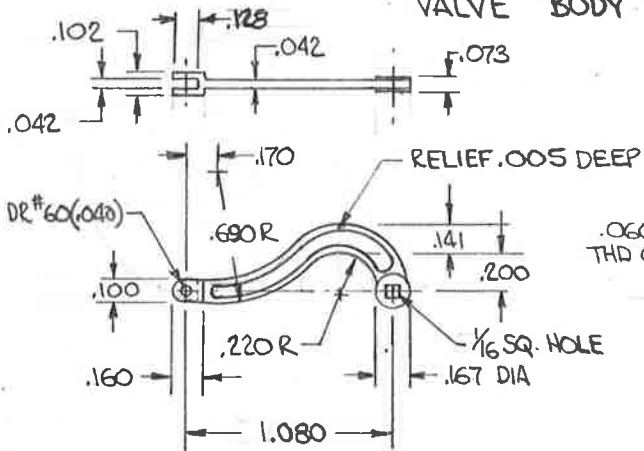
ASSEMBLY 2 REQD



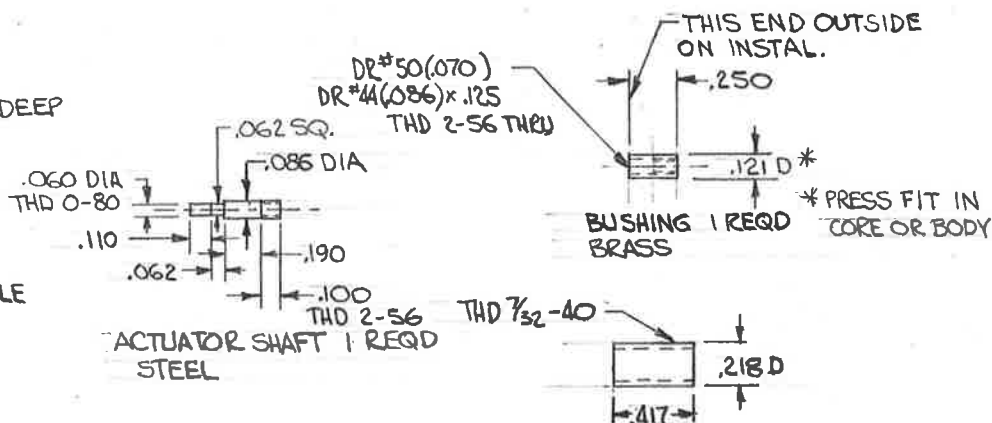
VALVE BODY 1 PIECE CONSTRUCTION
STEEL OR BRASS 1 REQD PER VALVE ASSY



VALVE BODY - FABRICATED CONSTRUCTION



LEVER 1 REQD PER ASSY
BRASS



ACTUATOR SHAFT 1 REQD
STEEL

DUMMY ATTACH BUSHING
STEEL 1 REQD PER ASSY.

DUMMY OKADEE BLOW-OFF VALVE
B&O P-7 #5300 1"

I.D. ALKIRE JAN 16, 1964