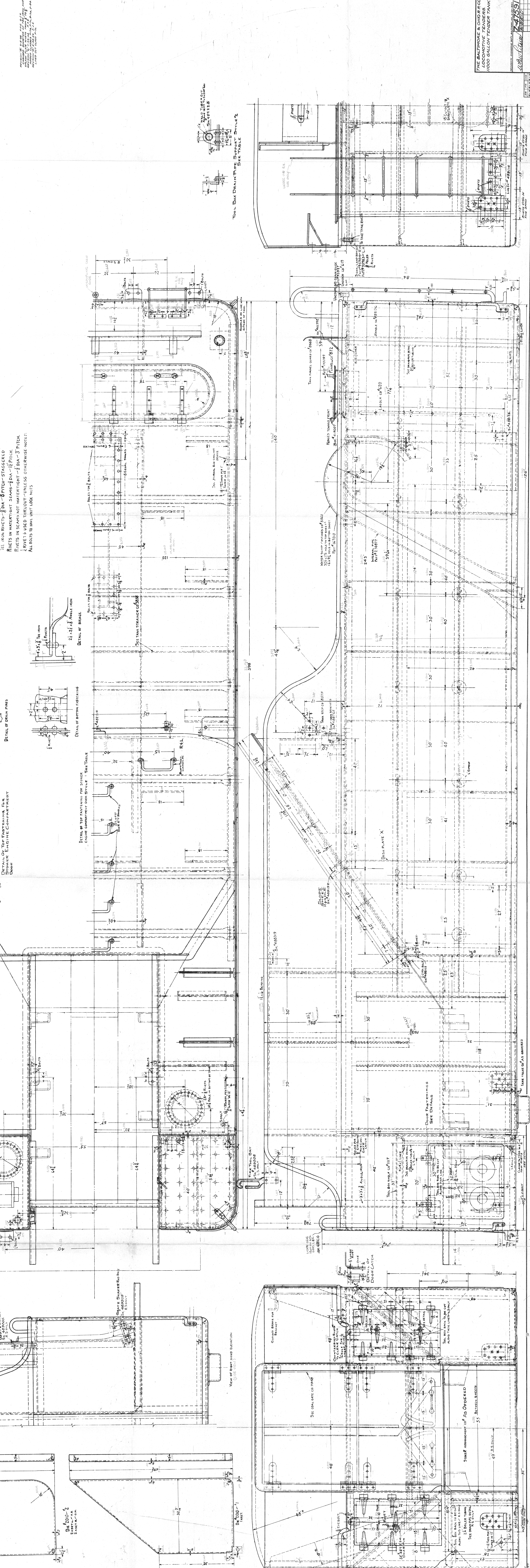
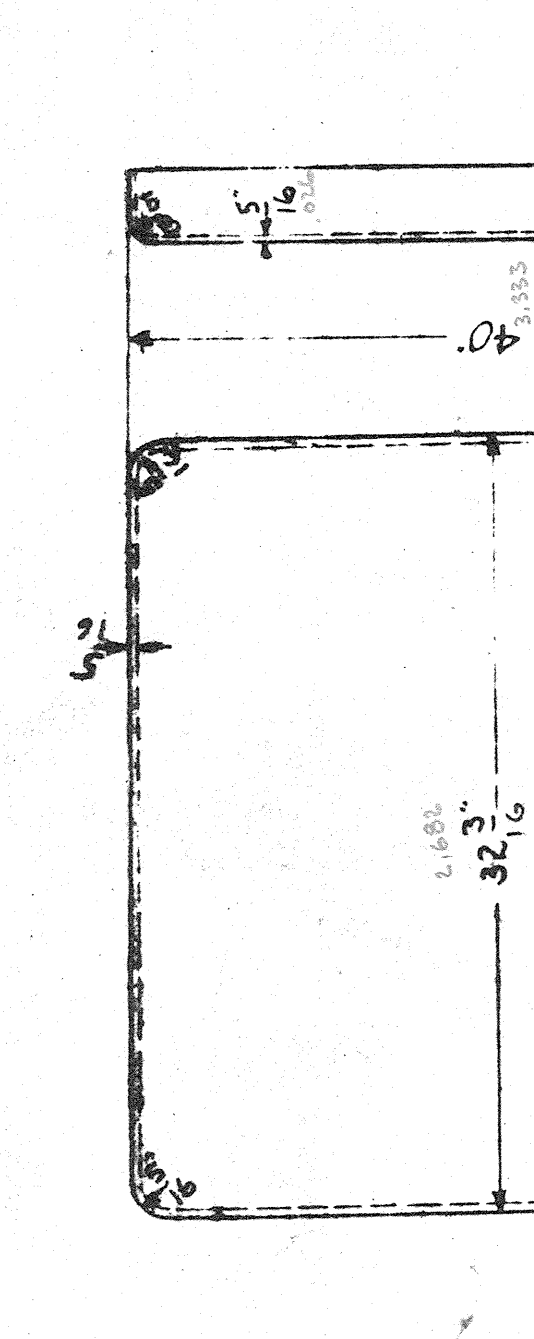
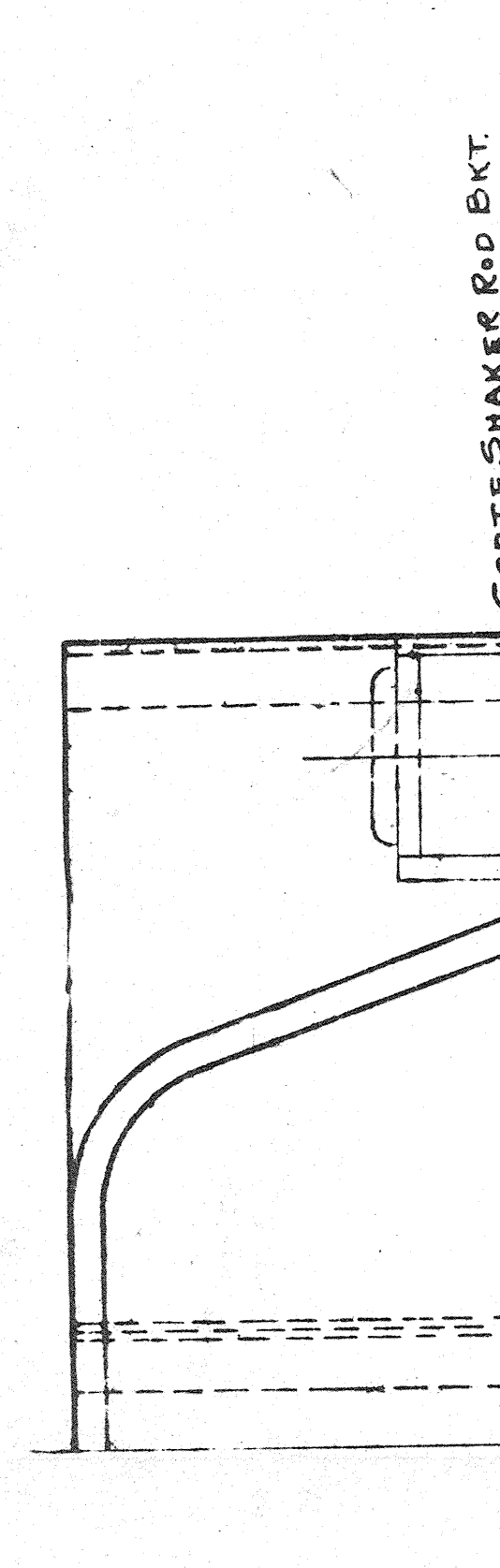
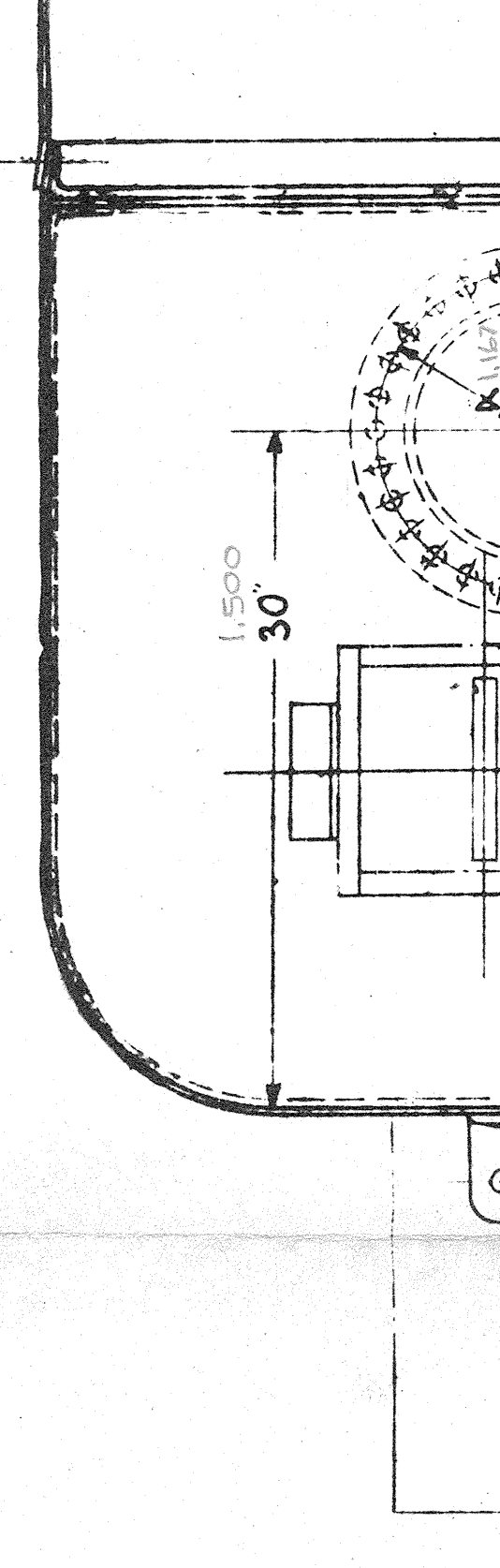
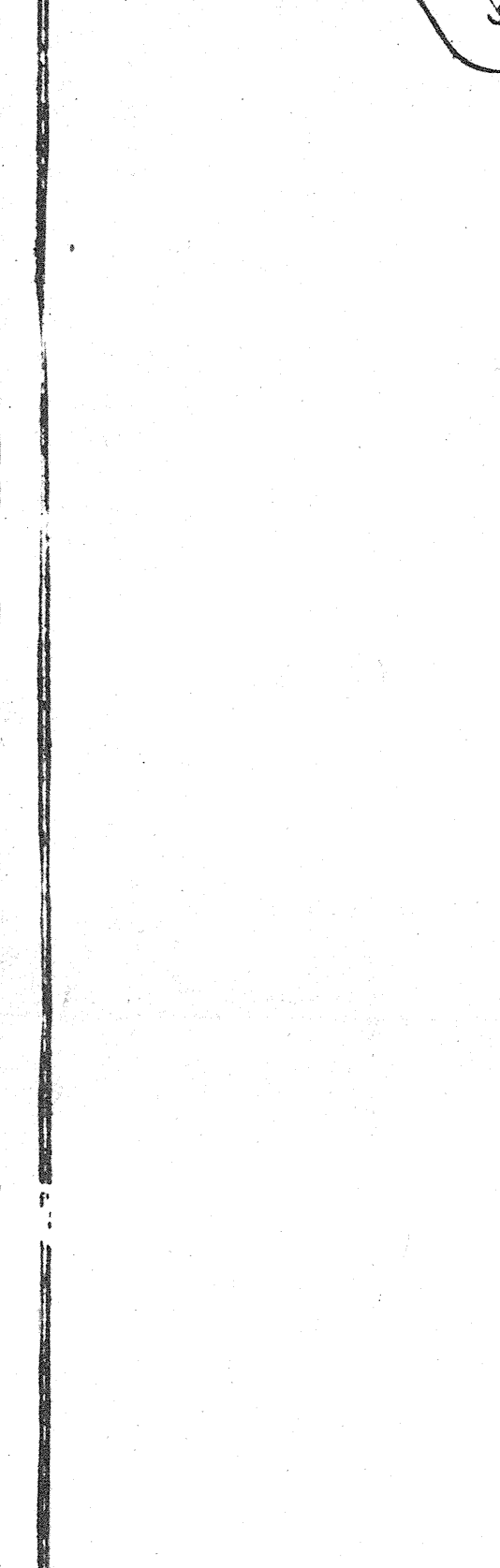
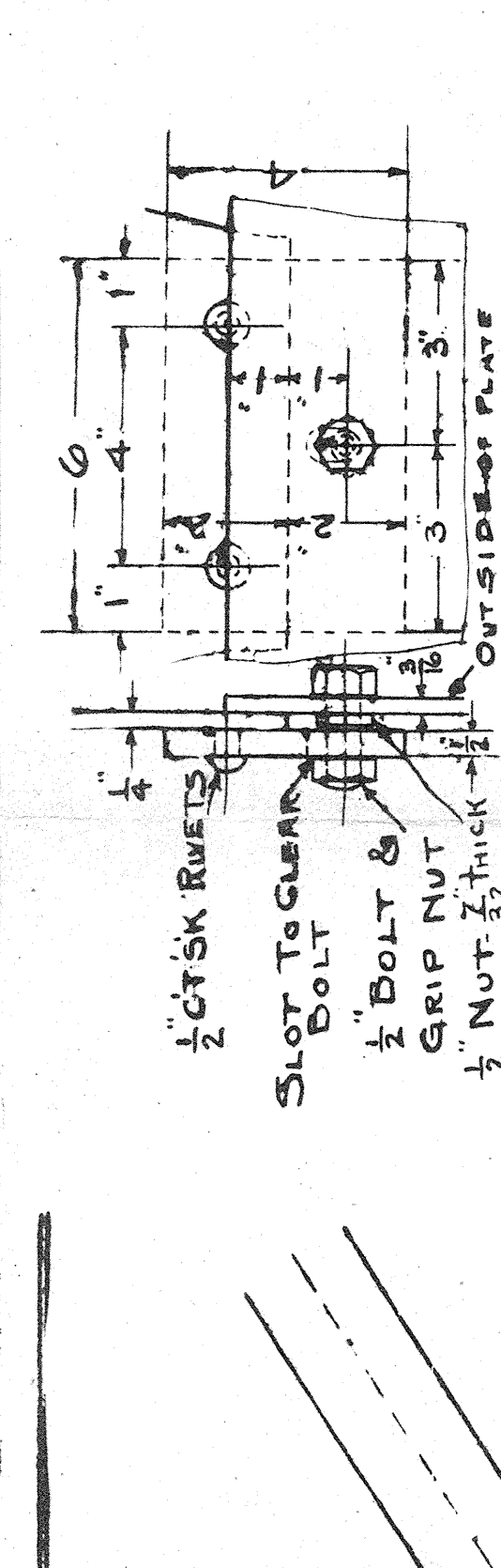
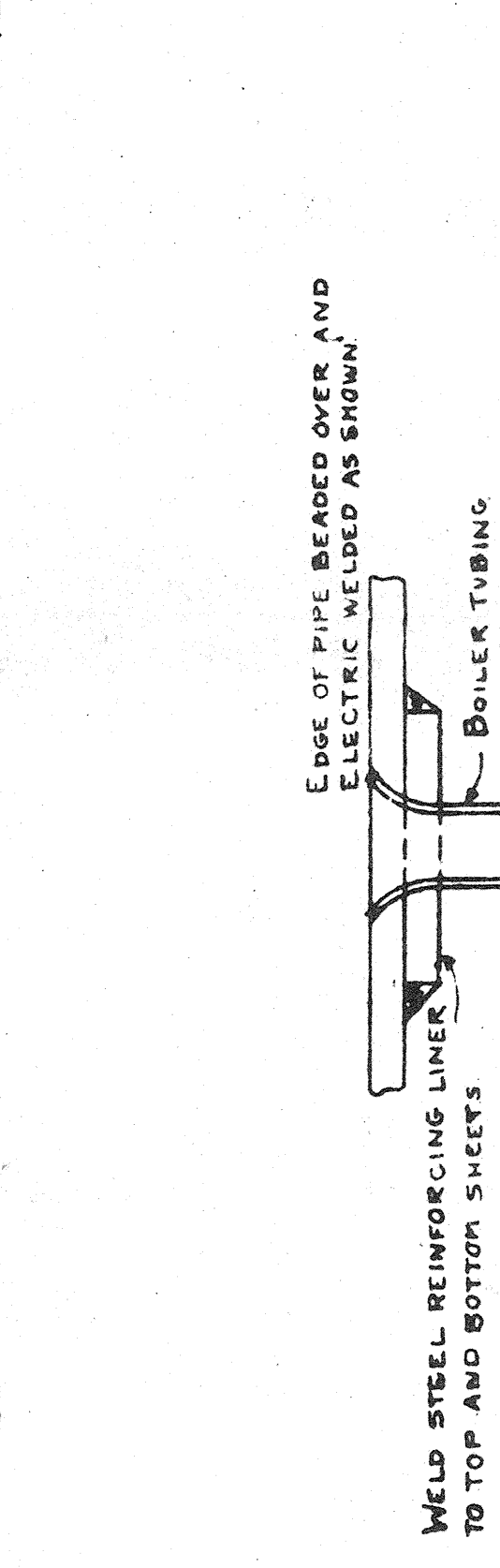
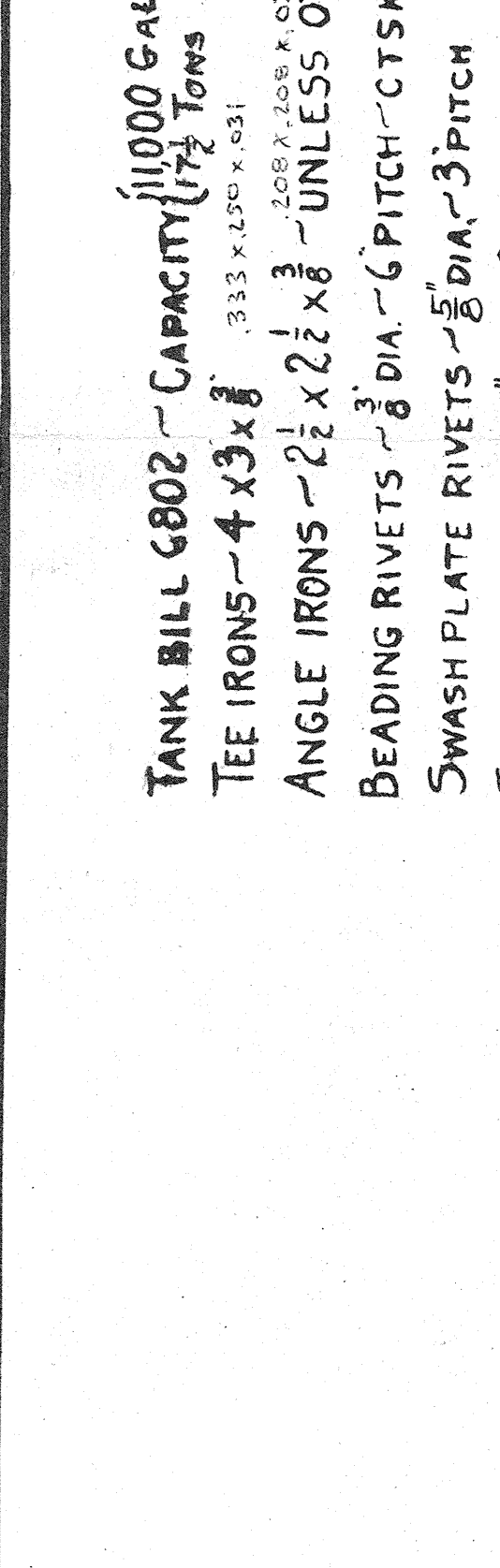
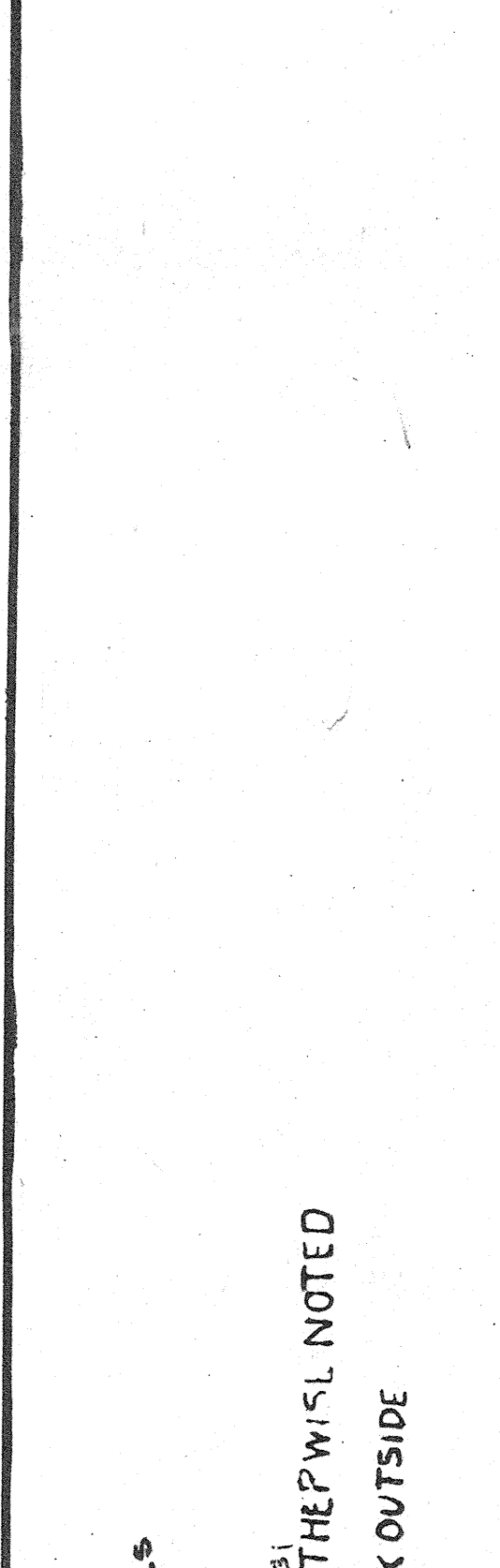
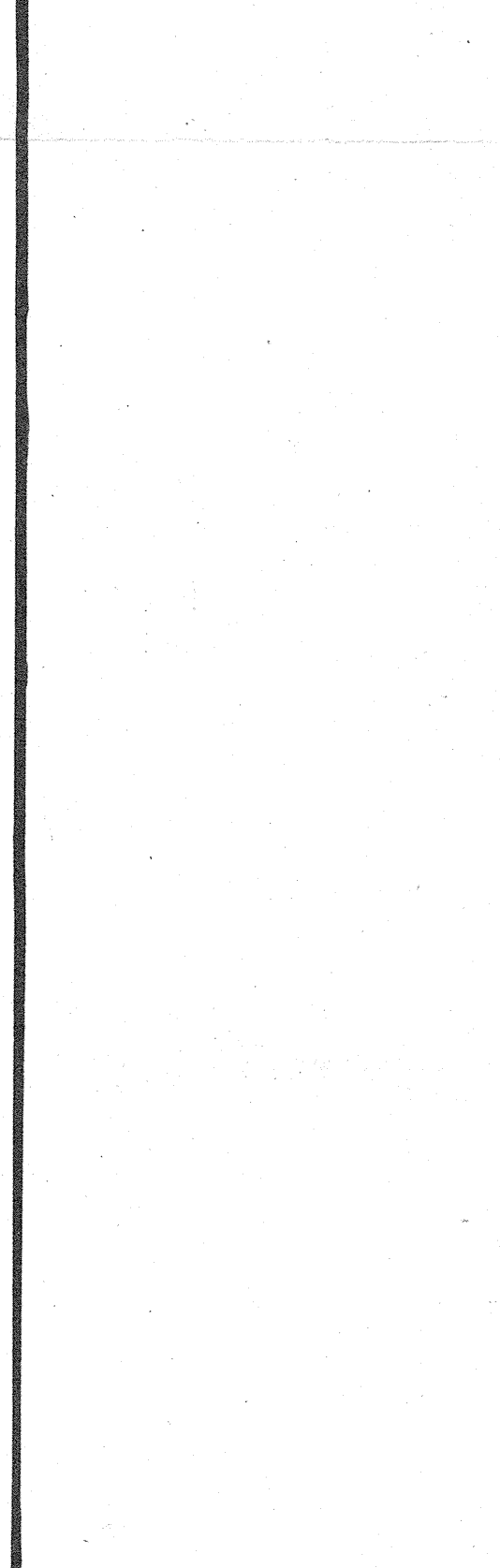


**TANK BILL 6802 - CAMCMTY 1000 GALS**  
 TEE IRONS - 4x3x8  
 ANGLE IRONS - 2 1/2 x 2 1/2 x 1/4 - UNLESS OTHERWISE NOTED  
 BEADING RIVETS - 3/8 DIA - 6 PITCH - CTSK OUTSIDE  
 SWASH PLATE RIVETS - 3/8 DIA - 3 PITCH  
 TEE IRON RIVETS - 3/8 DIA - 8 PITCH - STAGGERED  
 RIVETS IN WATERIGHT SEAMS - 3/8 DIA - 1 1/2 PITCH  
 RIVETS IN SEAMS NOT WATERIGHT - 1/2 DIA - 3 PITCH  
 Z RIVETS USED THROUGHOUT - UNLESS OTHERWISE NOTED  
 ALL BOLTS TO HAVE UNIT LOCK NUTS



View of RIGHT HAND ELEVATION

View of RIGHT HAND ELEVATION

View of RIGHT HAND ELEVATION

View of RIGHT HAND ELEVATION

View of RIGHT HAND ELEVATION

View of RIGHT HAND ELEVATION

View of RIGHT HAND ELEVATION

View of RIGHT HAND ELEVATION

View of RIGHT HAND ELEVATION