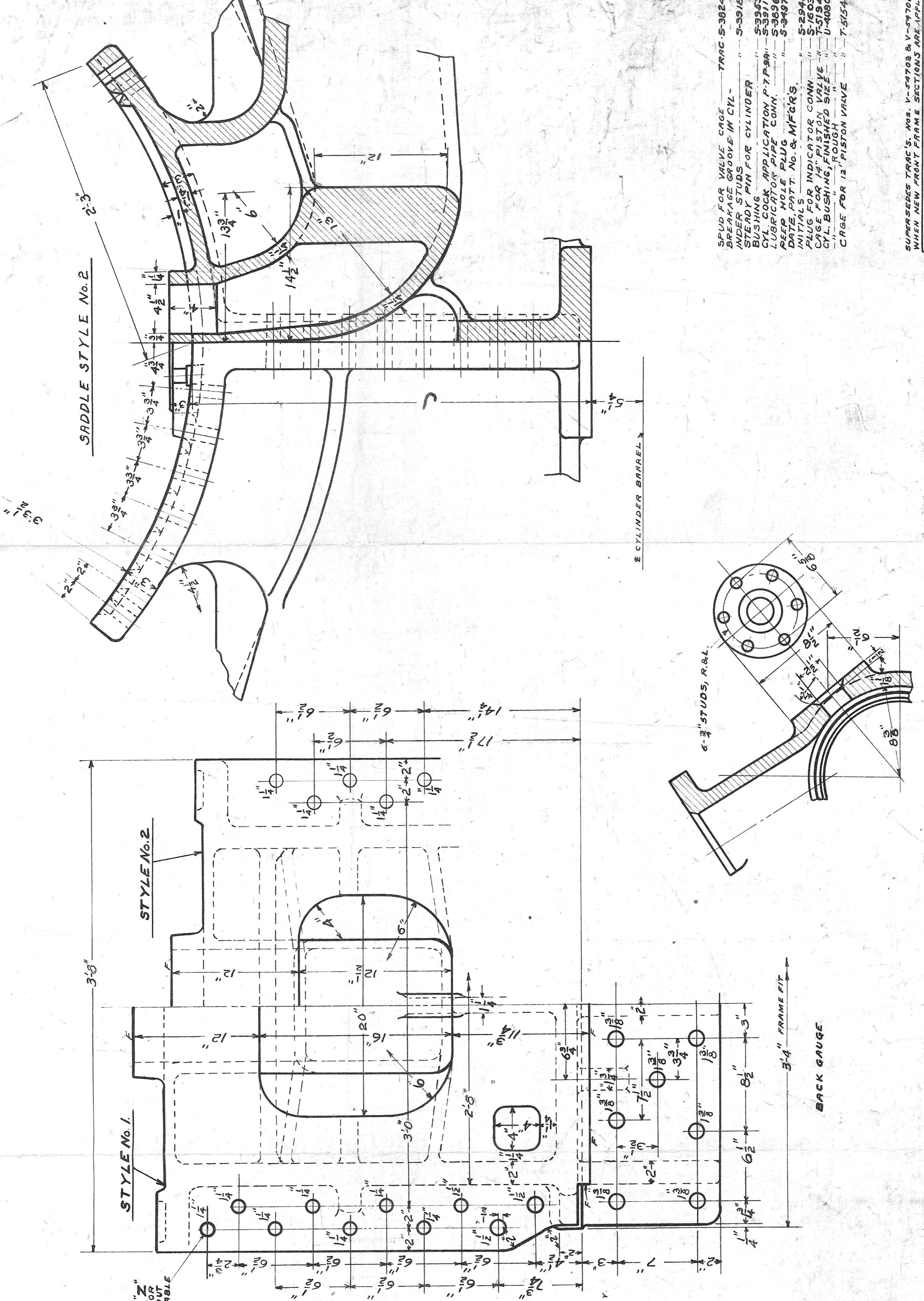


LINE NO.	WHERE USED	CROSS SECTION	STYLE CUT	PATTERN NO.	WITH 12" VALVE												VALVE	PATTERN NO.	STYLE	SADDLE	WHERE USED
					A	B	C	D	E	F	G	H	I	J	K	L					
1	P-7, P-7B	NO	NO																		
2	8-7, 11-11, 11-11	YES	YES	A-20945	14"	15"	15"	15"	15"	15"	15"	15"	15"	15"	15"	15"					
3	A-20, A-9, 9	NO	NO	A-20946																	
4	6-5, 6-7 WITH 12" VALVE	NO	NO	A-20950																	

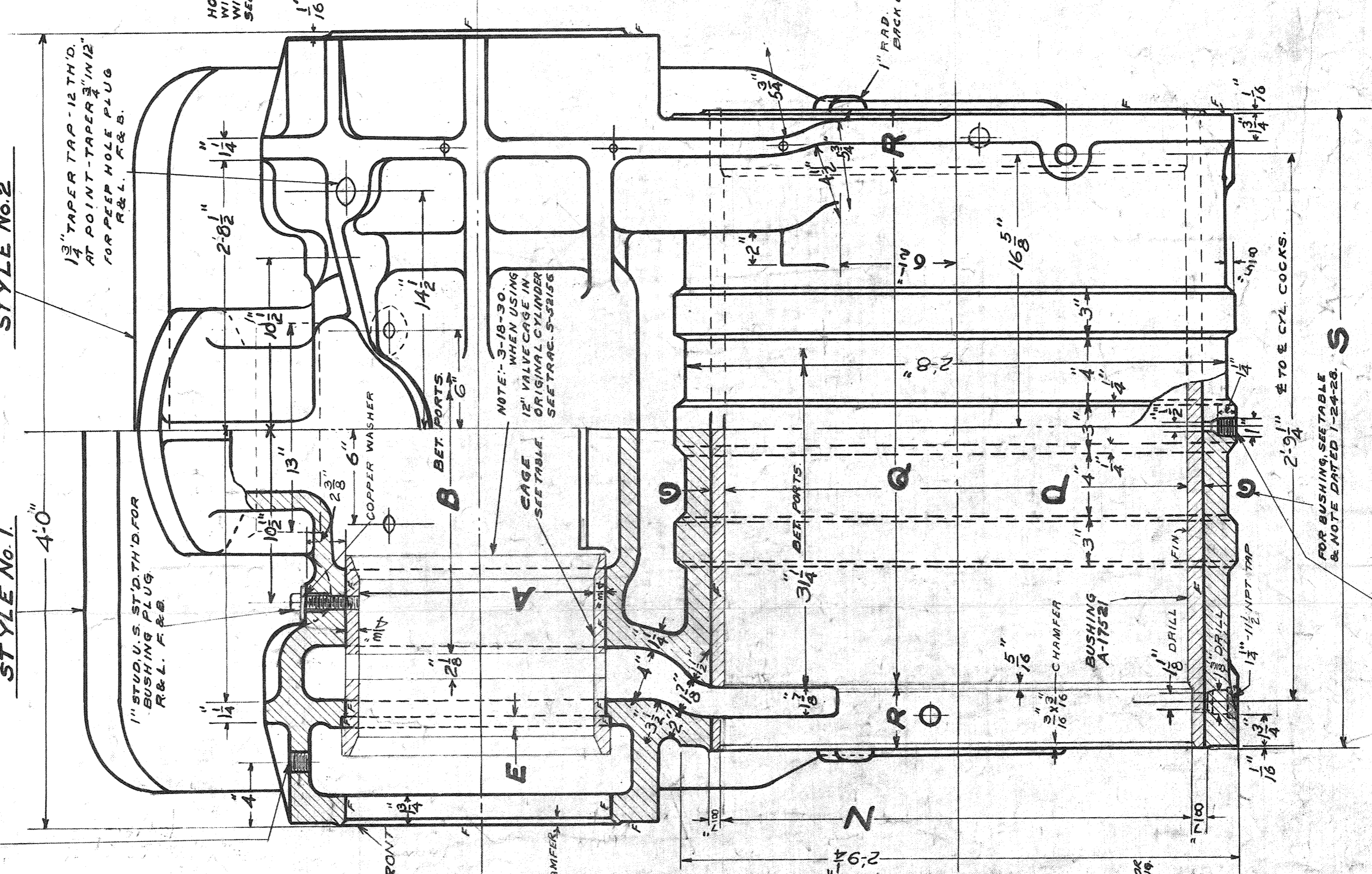
REVISED 11-10-14, 11-11-14, 11-12-14, 11-13-14, 11-14-14, 11-15-14, 11-16-14, 11-17-14, 11-18-14, 11-19-14, 11-20-14, 11-21-14, 11-22-14, 11-23-14, 11-24-14, 11-25-14, 11-26-14, 11-27-14, 11-28-14, 11-29-14, 11-30-14, 11-31-14, 11-32-14, 11-33-14, 11-34-14, 11-35-14, 11-36-14, 11-37-14, 11-38-14, 11-39-14, 11-40-14, 11-41-14, 11-42-14, 11-43-14, 11-44-14, 11-45-14, 11-46-14, 11-47-14, 11-48-14, 11-49-14, 11-50-14, 11-51-14, 11-52-14, 11-53-14, 11-54-14, 11-55-14, 11-56-14, 11-57-14, 11-58-14, 11-59-14, 11-60-14, 11-61-14, 11-62-14, 11-63-14, 11-64-14, 11-65-14, 11-66-14, 11-67-14, 11-68-14, 11-69-14, 11-70-14, 11-71-14, 11-72-14, 11-73-14, 11-74-14, 11-75-14, 11-76-14, 11-77-14, 11-78-14, 11-79-14, 11-80-14, 11-81-14, 11-82-14, 11-83-14, 11-84-14, 11-85-14, 11-86-14, 11-87-14, 11-88-14, 11-89-14, 11-90-14, 11-91-14, 11-92-14, 11-93-14, 11-94-14, 11-95-14, 11-96-14, 11-97-14, 11-98-14, 11-99-14, 11-100-14

**CAST IRON**  
MATERIAL SPEC. NO. 21  
FOR USE IN THIS CLASS  
SEE TABLE

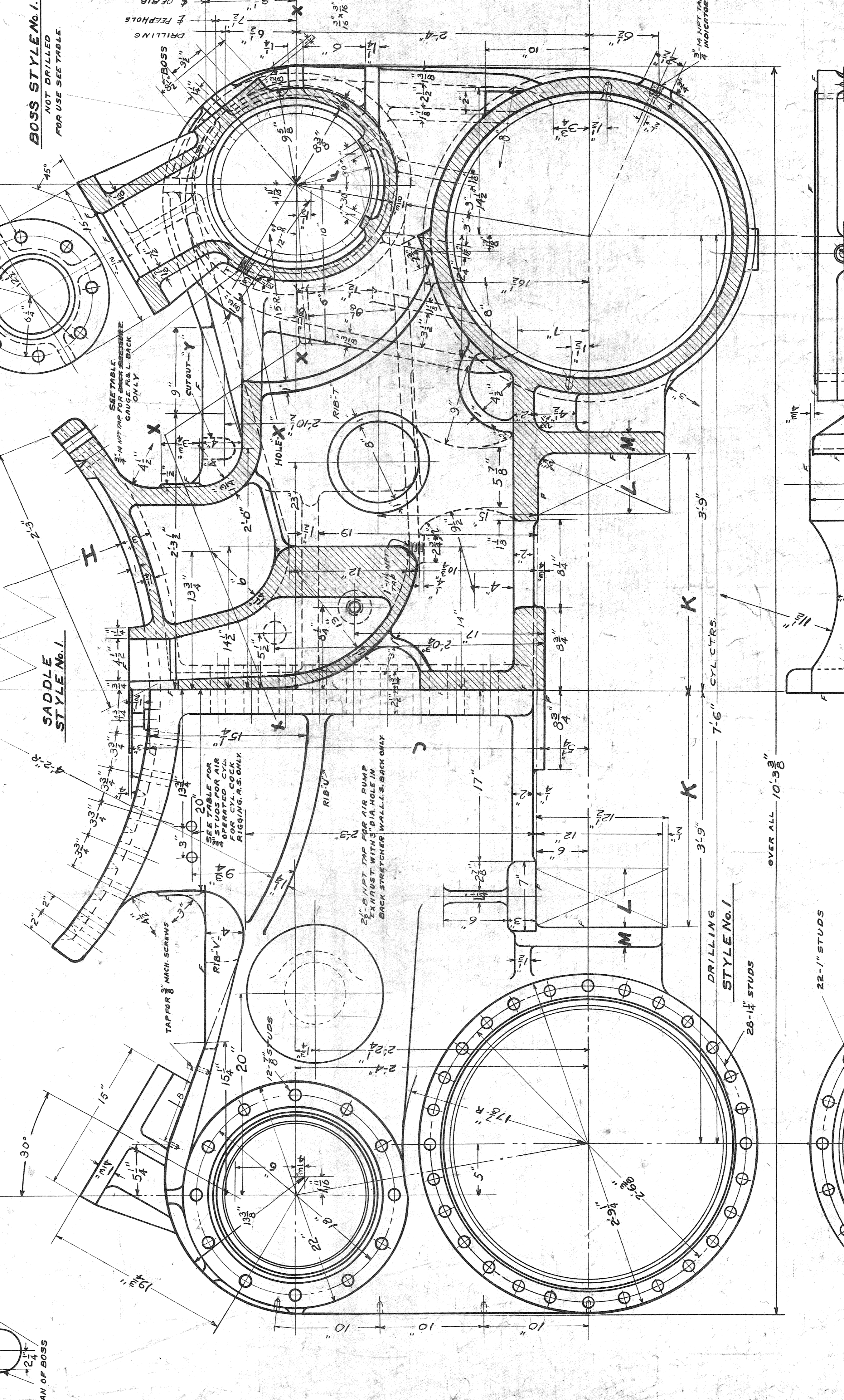
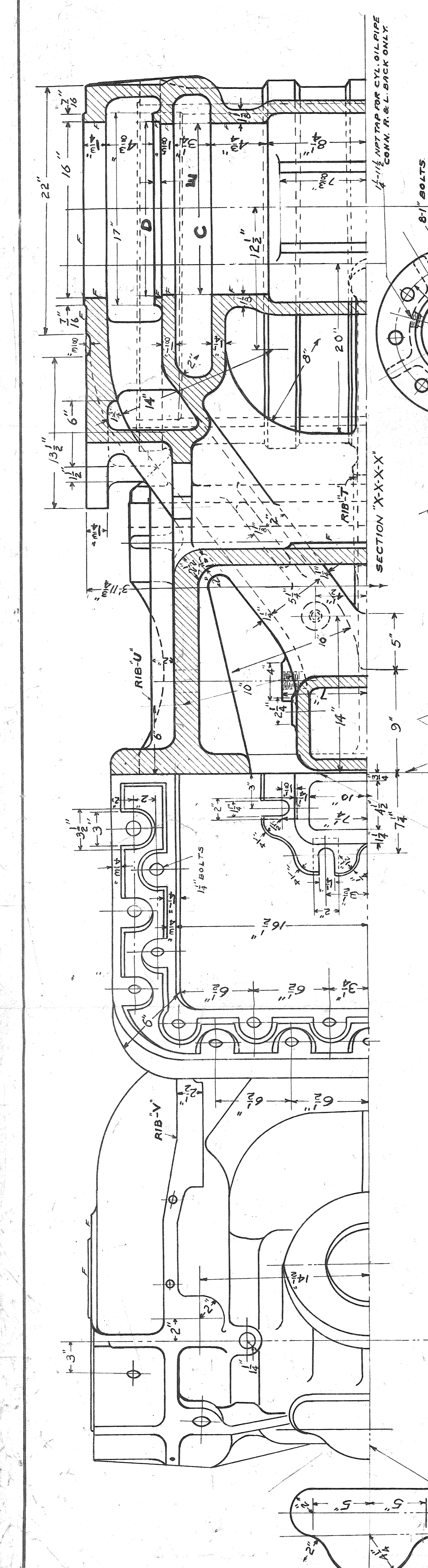


FOR USE IN THIS CLASS  
SEE TABLE

**Y-47577**



NOTE: - 1-24-28  
NO BUSHINGS FURNISHED IN NEW CYLINDERS, EXCEPT AS NOTED IN TABLE. BORE OUT BARREL TO INSIDE DIMENSIONS OF BUSHING FOR CLASSES IN LINES 1, 2, 3, 4, 5, 6, 7, 8, 9, 10, 11, 12, 13, 14, 15, 16, 17, 18, 19, 20, 21, 22, 23, 24, 25, 26, 27, 28, 29, 30, 31, 32, 33, 34, 35, 36, 37, 38, 39, 40, 41, 42, 43, 44, 45, 46, 47, 48, 49, 50, 51, 52, 53, 54, 55, 56, 57, 58, 59, 60, 61, 62, 63, 64, 65, 66, 67, 68, 69, 70, 71, 72, 73, 74, 75, 76, 77, 78, 79, 80, 81, 82, 83, 84, 85, 86, 87, 88, 89, 90, 91, 92, 93, 94, 95, 96, 97, 98, 99, 100



NOTE: - 1-24-28  
NO BUSHINGS FURNISHED IN NEW CYLINDERS, EXCEPT AS NOTED IN TABLE. BORE OUT BARREL TO INSIDE DIMENSIONS OF BUSHING FOR CLASSES IN LINES 1, 2, 3, 4, 5, 6, 7, 8, 9, 10, 11, 12, 13, 14, 15, 16, 17, 18, 19, 20, 21, 22, 23, 24, 25, 26, 27, 28, 29, 30, 31, 32, 33, 34, 35, 36, 37, 38, 39, 40, 41, 42, 43, 44, 45, 46, 47, 48, 49, 50, 51, 52, 53, 54, 55, 56, 57, 58, 59, 60, 61, 62, 63, 64, 65, 66, 67, 68, 69, 70, 71, 72, 73, 74, 75, 76, 77, 78, 79, 80, 81, 82, 83, 84, 85, 86, 87, 88, 89, 90, 91, 92, 93, 94, 95, 96, 97, 98, 99, 100