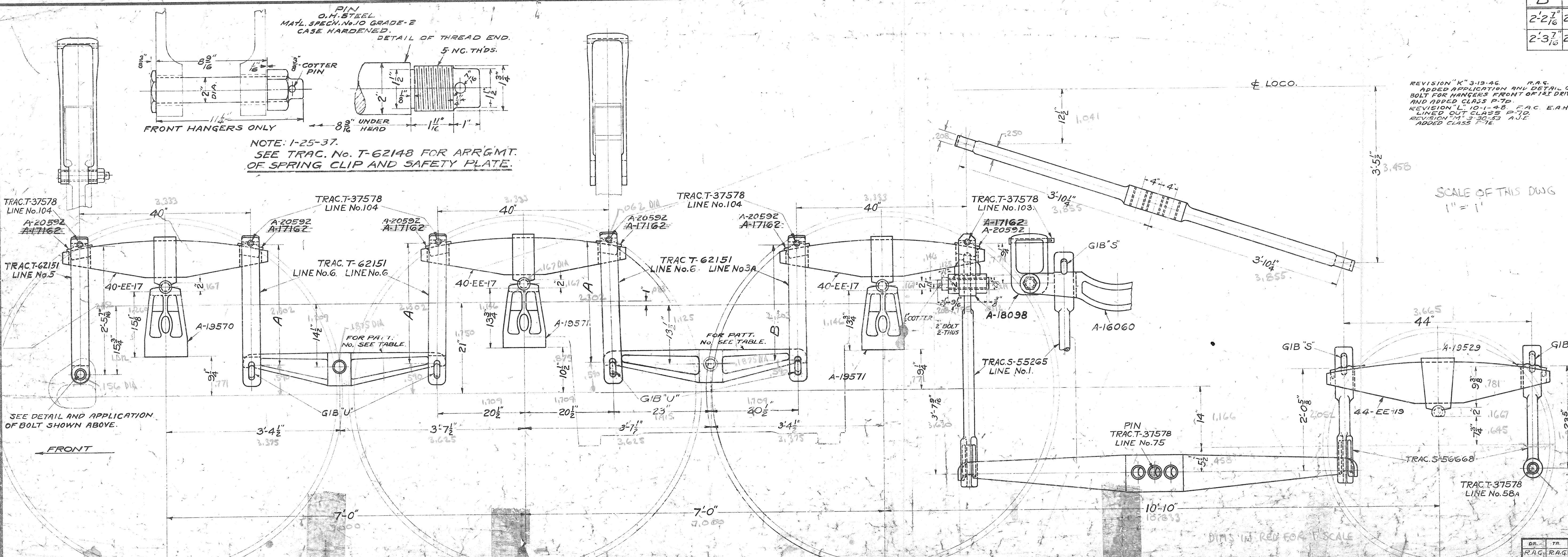


B	A	EQUALIZER PATT. No.	WHERE USED	LINE No.
2'-2 1/16"	2'-3 5/8"	A-17524	P-7, P-7A, P-7B, P-7C, P-116	1
2'-3 7/16"	2'-4 5/8"	A-21803	P-9B (P-7E, WITHOUT ROLLER BEARING DRIVING BOXES)	2

ISSUED WITH LETTER 5-19-35  
10-15-36



REVISION "K" 3-19-46. R.A.S. ADDED APPLICATION AND DETAIL OF BOLT FOR HANGERS FRONT OF 1ST DRIVER AND ADDED CLASS P-7D.  
REVISION "L" 10-1-48. F.A.C. E.A.H. LINED OUT CLASS P-7D.  
REVISION "M" 3-30-53 A.J.E. ADDED CLASS P-7E.

REVISION "B" 10-7-36 A.E.R. A.J.E. DISCONTINUED EQUALIZER BETWEEN 1ST AND 2ND DRIVERS.  
REVISION "C" 10-29-36 R.E.A. A.J.E. CHANGED HANGER NUMBERS AT MAIN AND 3RD DRIVERS.  
REVISION "D" 1-8-37 A.V.E. A.G.S. RESTORED EQUALIZER BETWEEN 2ND AND 3RD DRIVERS.  
REVISION "E" 1-25-37 F.A.C. SHOWED HEAVIER TRAILER SPRING USED ON LOCO. NO. 5214, AND ADDED NOTE OF EVEN DATE.  
REVISION "F" 5-18-38. F.A.C. W.H.E. ADDED CLASS P-7A TO LINE 1.  
REVISION "G" 9-8-38 A.V.A.G. ADDED CLASS P-9B.  
REVISION "H" 2-18-41 A.J.E. CHANGED LENGTH OF HANGER FRONT OF REAR DRIVER.  
REVISION "I" 2-21-44 A.J.E. ADDED CLASSES P-7E, P-7F.  
REVISION "J" 10-11-44 C.H.S. ADDED LINE 2 AND TABULATED HANGER LENGTHS.

SCALE OF THIS DWG  
1" = 1"

SPRING RIGGING PINS	TRACT-37578
" GIB'S	" U-39988
TRANSVERSE EQUAL. BEAM, A-16060	" S-42775
DRIVING SPRING END CLIP, A-20592	" S-62130
" EQUALIZER, A-17524	" S-48446
" HANGER, A-18098	" S-49241
" U-42151	" U-42151
APPL'N. OF ROLLER, DRIVING SPRING & SADDLE	" T-54926
TRAILER SPRING END CLIP, A-19529	" S-54871
APPL'N. OF ROLLER, TRAILER SPRING	" T-55872
DRIVING SPRING, 40-EE-17	" S-54927
SADDLE, A-19570, A-19571	" S-55149
HANGER FRONT OF TRAILER EQUALIZER	" S-55265
TRAILER SPRING	" S-55870
" TRUCK EQUALIZER	" S-56664
" SPRING HANGERS	" S-56668
DRIVING SPRING EQUALIZER, A-21803	" S-71633

SUPERSEDES TRAC. T-55872, T-54926, AND Y-47576 FOR RENEWALS.

THE BALTIMORE & OHIO R. R. CO.  
LOCOMOTIVES  
SPRING RIGGING ARR'GMT.

MOTIVE POWER DEPT. BALTIMORE, MD. 2-11-1933

W-56658	
DR. W. Whittitt	TR. C.H.K.
R.A.G.	R.A.G. A.J.E.