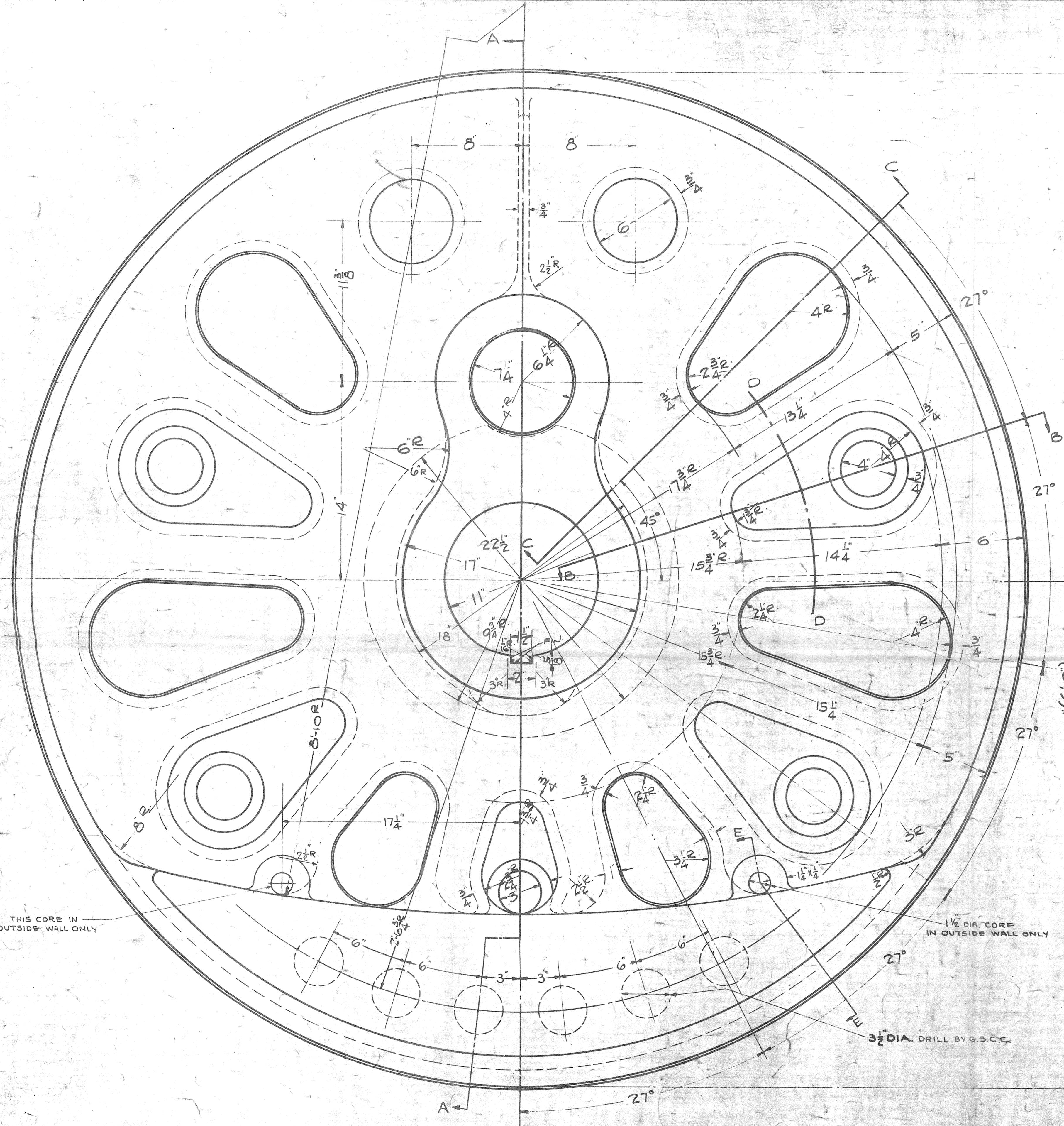


LOCATION	WHERE USED	LINE No.
OTHER THAN MAIN	P-7, P-7a, P-7c, P-7d, P-9a, P-7e.	1

INTERCHANGES WITH WHEEL SHOWN ON TRAC T-70336 AND MUST BE APPLIED IN LOCOMOTIVE SETS.

REVISION B" 10-17-47 C.H.S. SHOWED WHEEL MUST BE APPLIED IN LOCOMOTIVE SETS. SUPERSEDES TRAC T-70336 FOR RENEWALS. REVISION C" 3-9-49 A.M.E. ADDED CLASS P-7c.

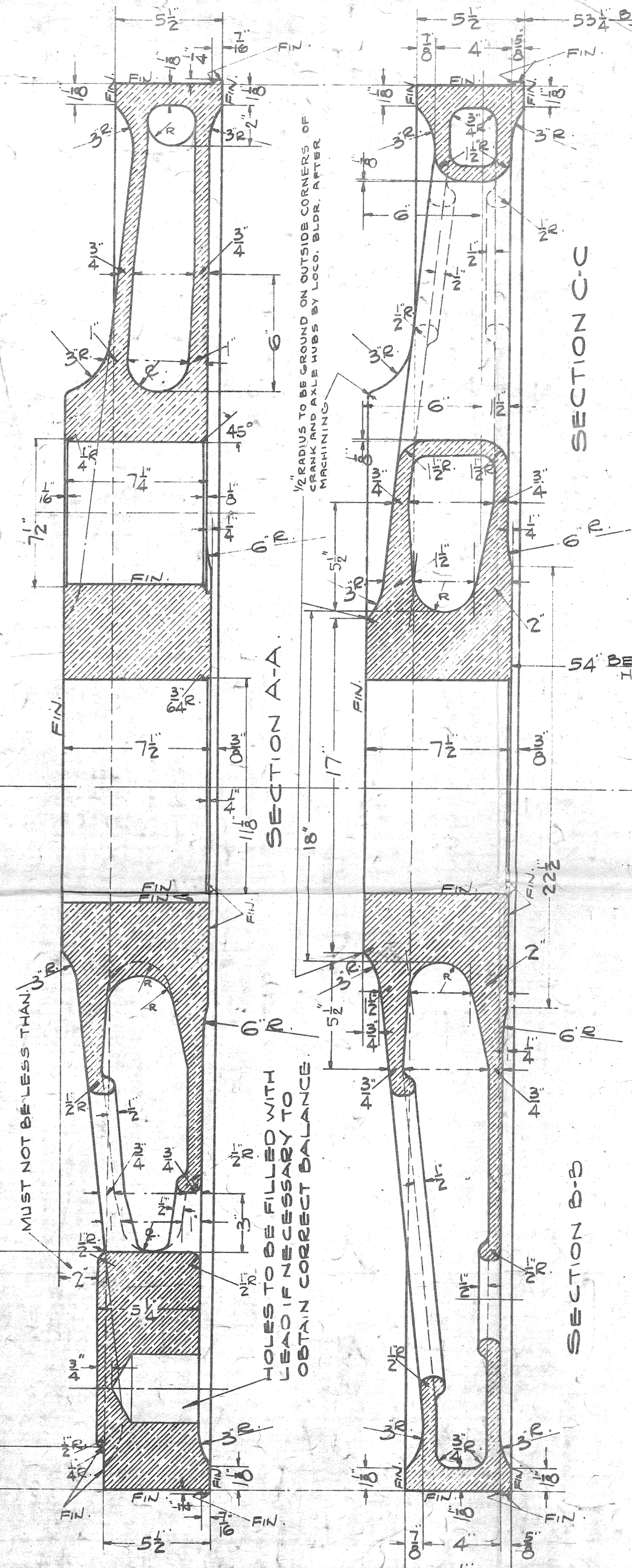


THIS CORE IN OUTSIDE WALL ONLY

1 1/2 DIA. CORE IN OUTSIDE WALL ONLY

3 1/2 DIA. DRILL BY G.S.C.E.

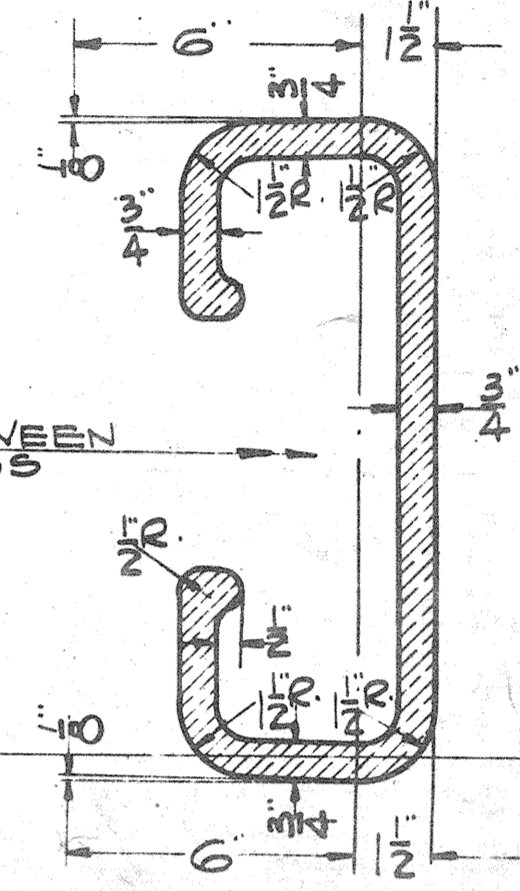
A-20533
CAST STEEL
A.A.R. SPEC. N°201
GRADE "B"



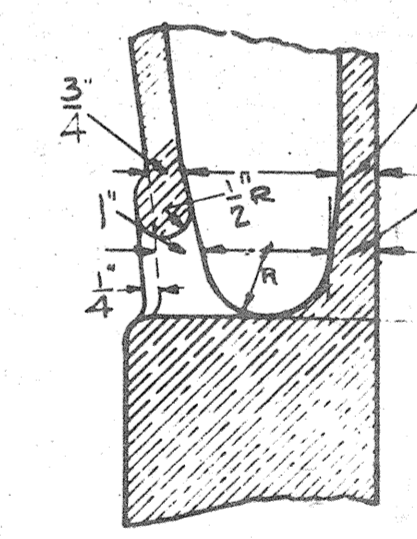
MUST NOT BE LESS THAN

HOLES TO BE FILLED WITH LEAD IF NECESSARY TO OBTAIN CORRECT BALANCE.

1/2 RADIUS TO BE GROUND ON OUTSIDE CORNERS OF MACHINING



SECTION D-D



SECTION E-E

SUPERSEDES TRAC T-70336 FOR RENEWALS.

THE BALTIMORE & OHIO R.R. CO.
LOCOMOTIVES.
DRIVING WHEEL CENTER.
BOXPOK TYPE.

MECHANICAL ENGINEERING DEPT., BALTIMORE, MD. 10-12-1946

V-74328

DR. FR. CHK. A.B. Lawson

14710