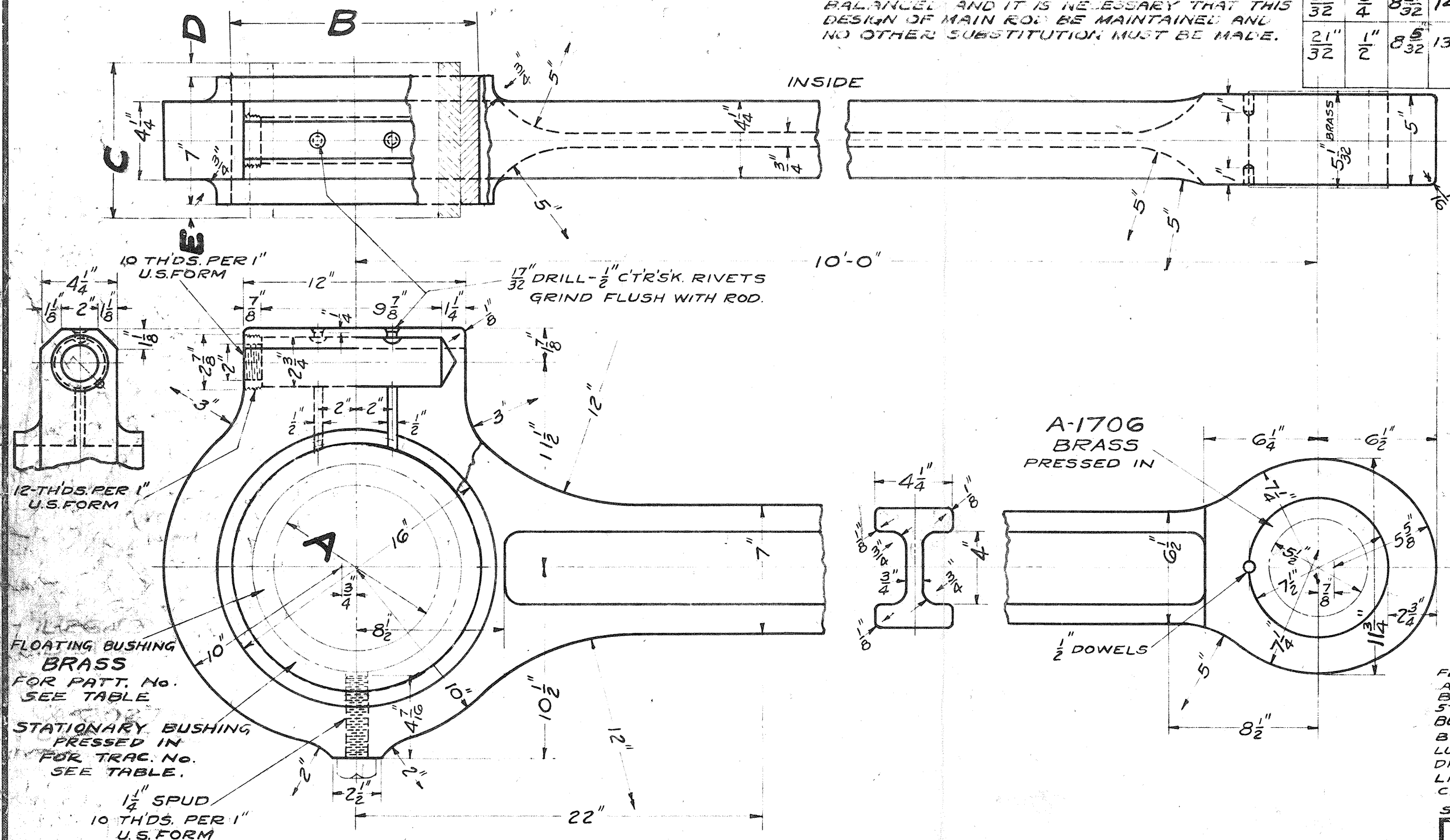


\*NOTE: 2-15-36.

MAIN DRIVING WHEELS USED WITH MAIN RODS HERESHOWN ARE SPECIALLY COUNTER-BALANCED AND IT IS NECESSARY THAT THIS DESIGN OF MAIN ROD BE MAINTAINED AND NO OTHER SUBSTITUTION MUST BE MADE.

E	D	C	B	A	FLOATING BUSHING PATT. No.	STATIONARY BUSHING TRAC. No.	WHERE USED	LINE No.
$\frac{29}{32}$ "	$\frac{3}{4}$ "	$8\frac{21}{32}$ "	14"	$9\frac{33}{64}$ "	L-2649	T-69983	V-3, V-4.	1
$\frac{21}{32}$ "	$\frac{1}{2}$ "	$8\frac{5}{32}$ "	$13\frac{1}{2}$ "	$9\frac{1}{64}$ "	L-3548		P-7B, P-7C FOR RENEWALS, P-7D, P-7E, P-9B	*2



REVISION "B" 5-16-35. F.A.C.  
 ADDED CLASS V-4.  
 REVISION "C" 2-15-36. F.A.C.  
 ADDED CLASS P-9A AND NOTE OF EVEN DATE.  
 REVISION "D" 6-3-36. F.A.C.  
 ADDED CLASS P-7 AND CHANGED NOTE OF 2-15-36.  
 REVISION "E" 4-14-37.  
 ADDED CLASS P-7A.  
 REVISION "F" 3-31-42. W.H.W.C.F.P.  
 ADDED CLASS P-9B.  
 REVISION "G" 10-2-43. W.H.W.E.A.H.  
 ADDED CLASS P-7B AND P-7C FOR RENEWALS TO LINE No. 2.  
 REVISION "H" 11-16-43. W.H.W.G.E.C.  
 CHANGED APPLICATION OF BUSHING.  
 REVISION "I" 8-20-46. A.J.E.  
 ADDED CLASS P-7D.  
 REVISION "J" 3-11-48. A.J.E.  
 ADDED CLASS P-7E.

FLOATING BUSHING ——— TRAC. No. T-69982  
 APPLICATION OF SPUD ——— "T-45615  
 BUSHING FOR GREASE CUP ——— "T-45616  
 STATIONARY BUSHING ——— No. T-69983  
 BUSHING ASSEMBLY ——— "T-69981  
 BRASS, FRONT END A-1706 ——— "U-44725  
 LUBRICATION GROOVES IN BRASS ——— "T-41796  
 DRILLING OF FLOATING BUSHING ——— "S-69897  
 LINERS FOR FLOATING BUSHINGS ——— "T-69984  
 CAP FOR GREASE CUP ——— TRAC. "S-69982  
 SUPERSEDES TRAC T-47107 FOR RENEWALS.

CARBON VANADIUM STEEL  
 A.A.R. SPECN. M-127  
 CLASS "B"  
 FINISH ALL OVER  
 ASSEMBLE RIGHT & LEFT  
 RIGHT SHOWN.

THE BALTIMORE & OHIO R. R. CO.  
 LOCOMOTIVES.  
 MAIN ROD  
 CARBON VANADIUM STEEL

MOTIVE POWER DEPT. BALTIMORE, MD. 2-14-1935

T-59415  
 DR. TR. CHK.  
 A.W.G. A.W.G. F.A.C.