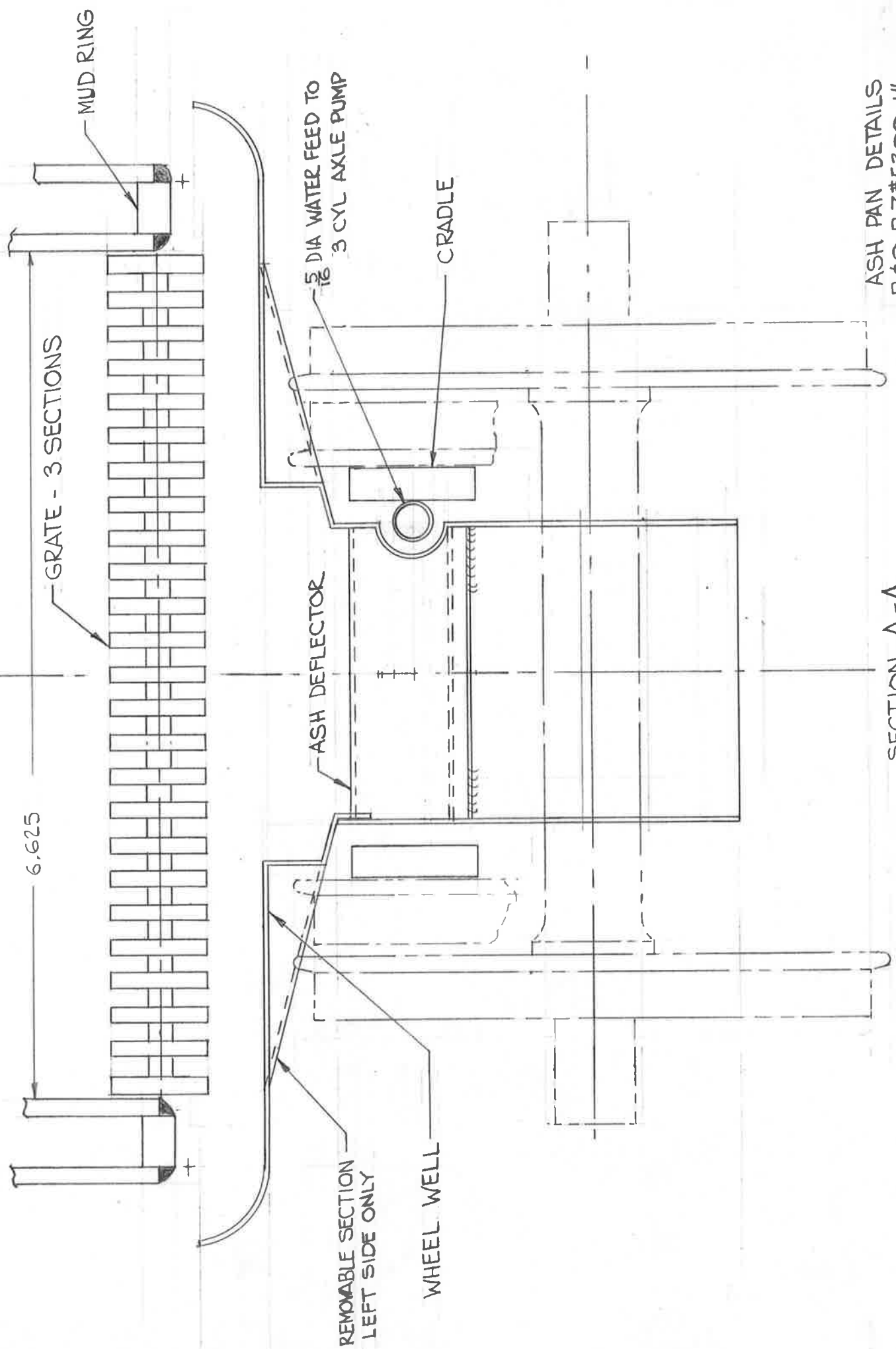
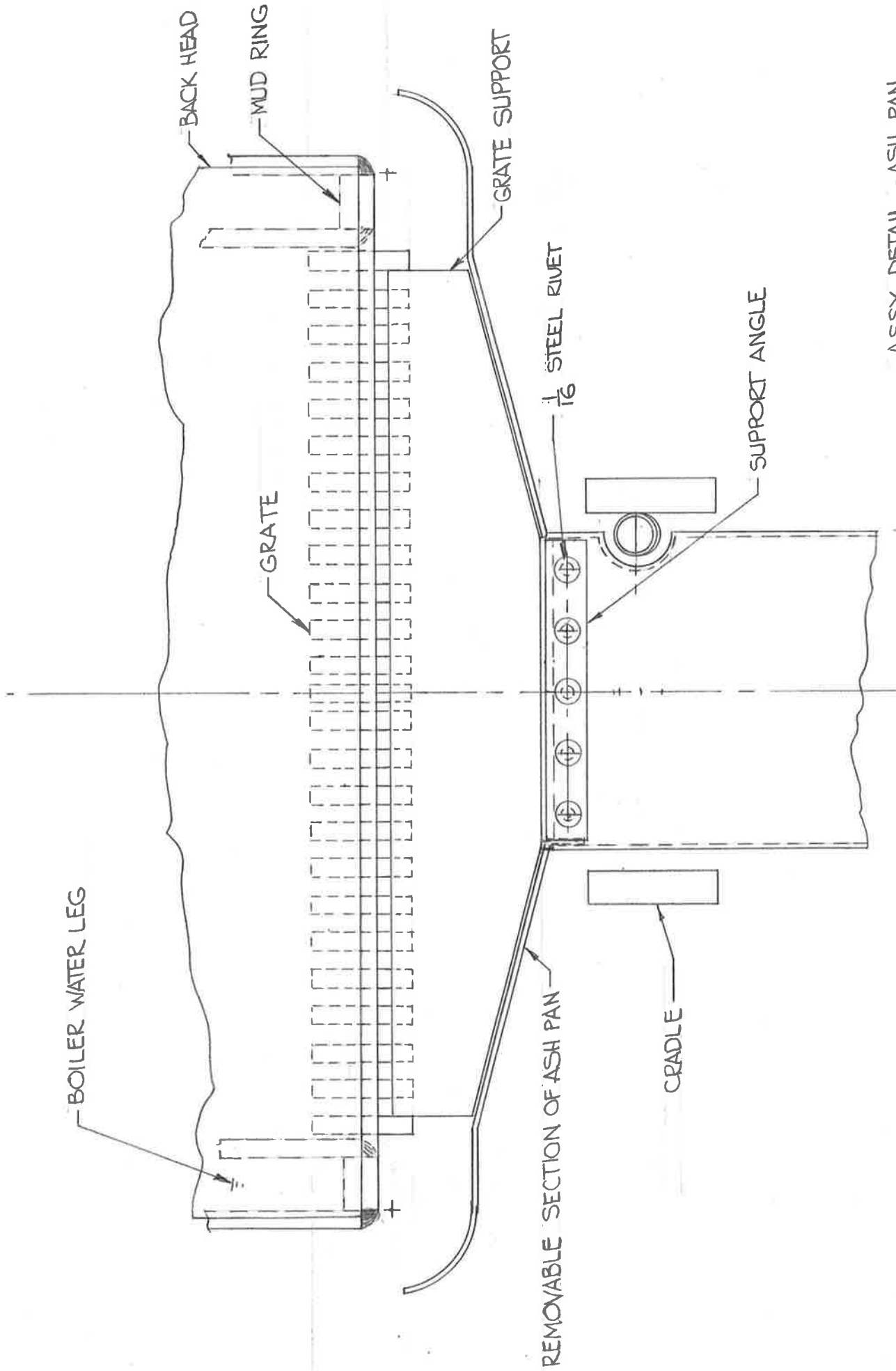


ASH DUMP DOOR DETAILS
 B&O P-7 #5300 1"
 SHEET 1 OF 9
 I.D. ALKIRE 1962



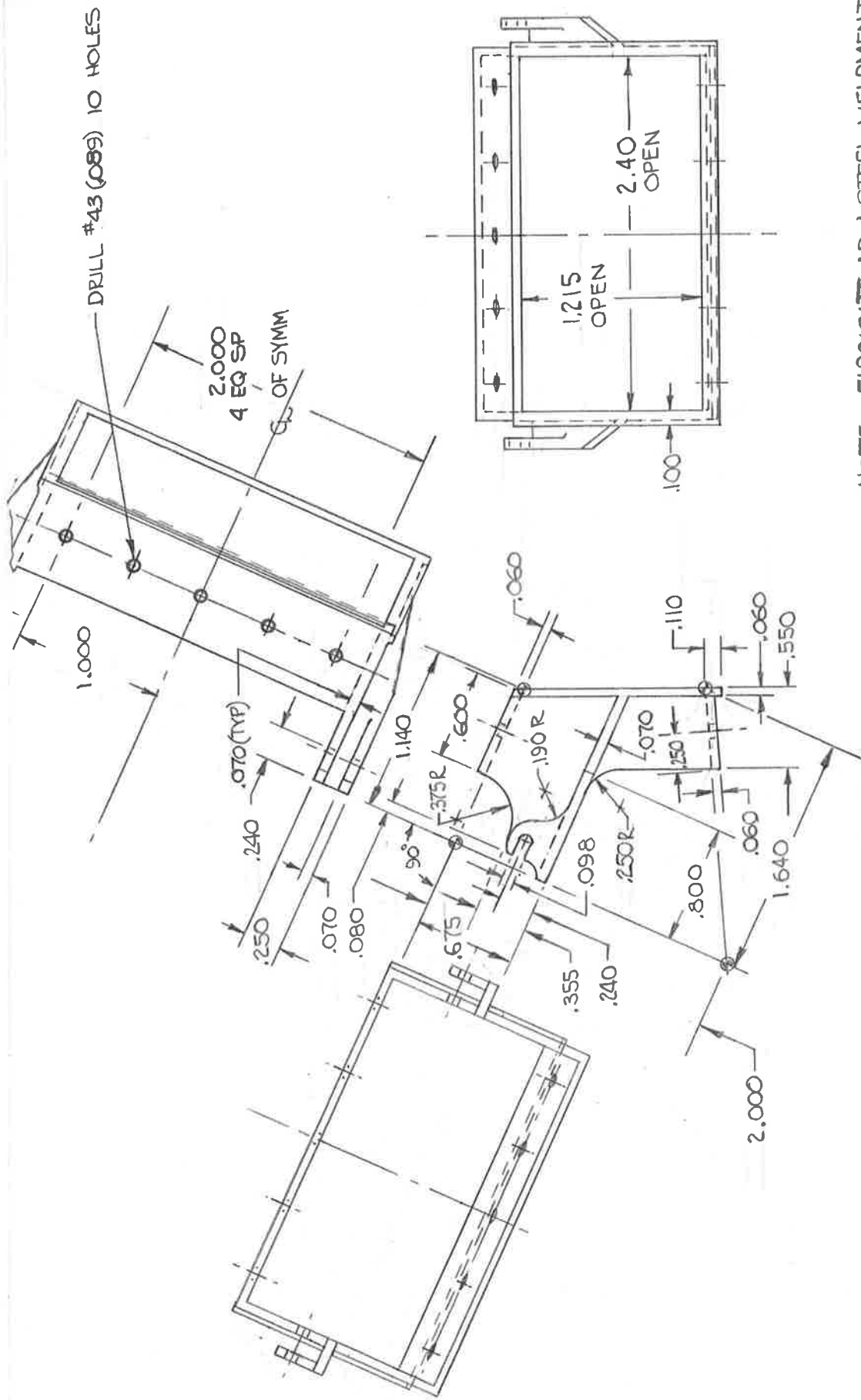
ASH PAN DETAILS
 B&O P-7#5300 1"
 SHEET 2 OF 9 I.D. ALKIRE 1962

SECTION A-A
 ASH PAN WHEEL WELL DETAIL



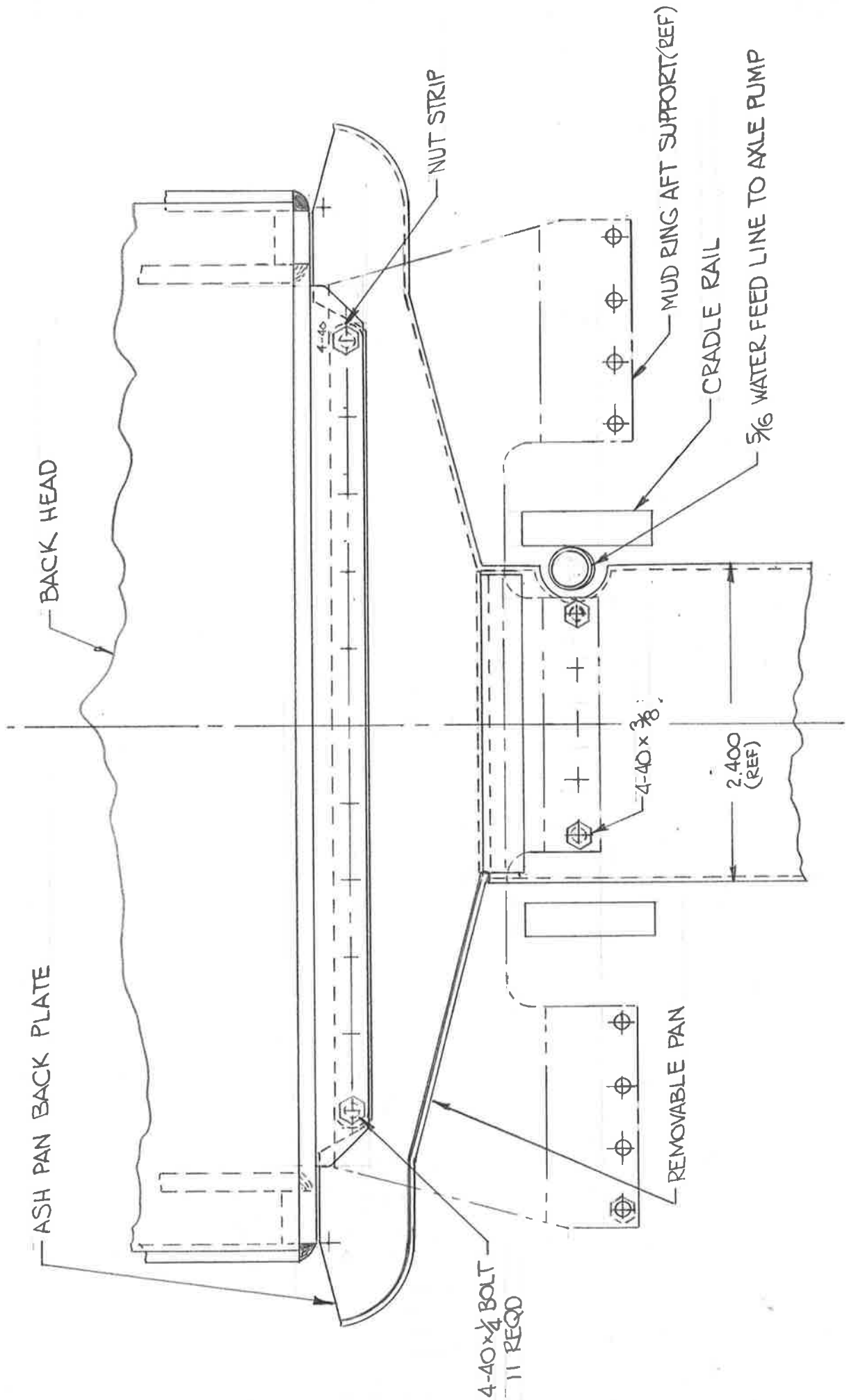
ASSY DETAIL - ASH PAN
 B&O P-7 #5300 1"
 SHEET 3 OF 9
 I.D. ALKIRE 1962

SECTION B₁-B₁
 DETAIL OF GRATE REAR SUPPORT
 REAR BOILER SUPPORT OMITTED FOR CLARITY



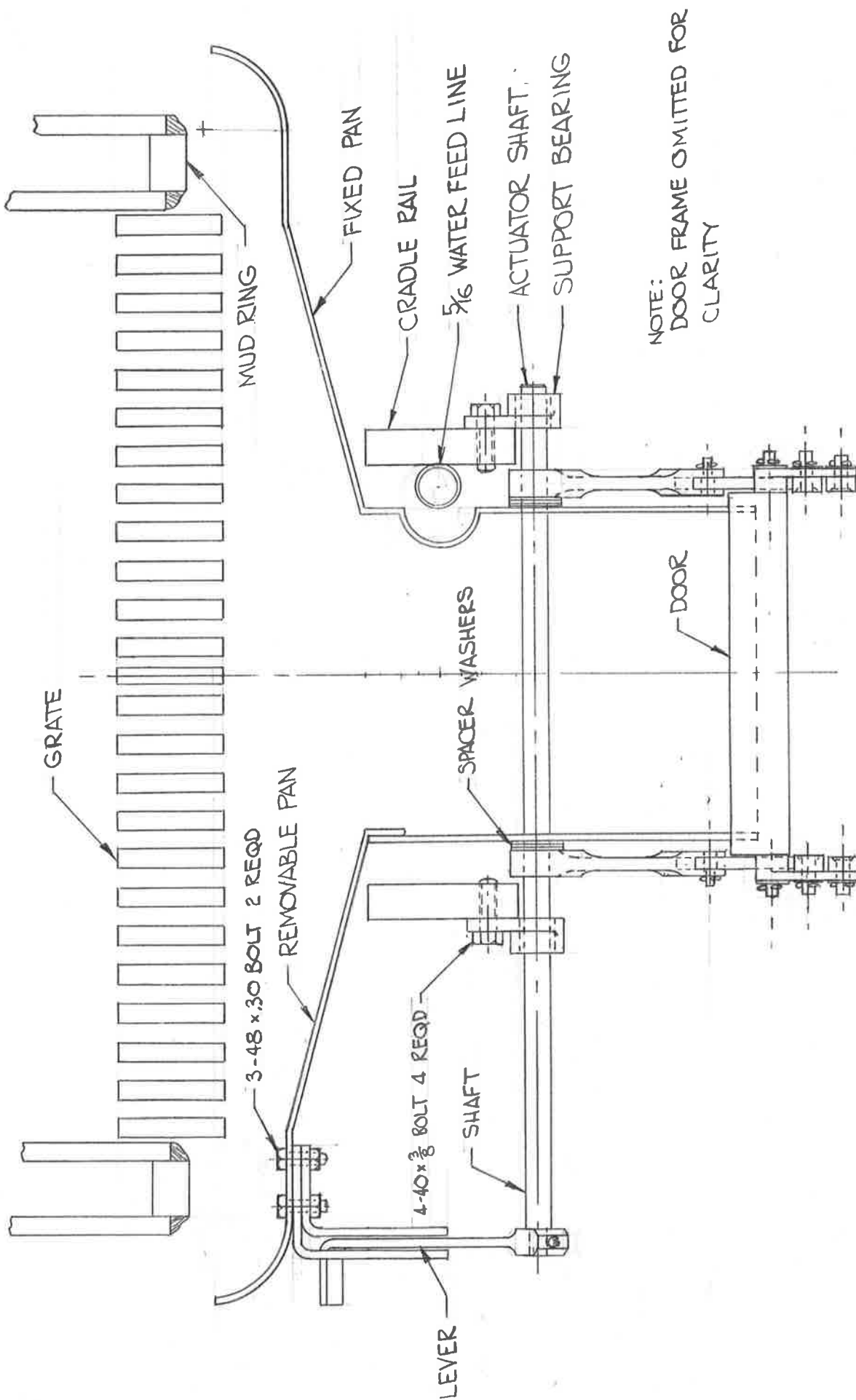
NOTE: FABRICATE AS A STEEL WELDMENT
 -Φ- INDICATES CONSTRUCTION POINTS FOR LAYOUT

ASH RECEIVER DOOR FRAME 2 REQD
 B&O P-7 #5300 1"
 REV. A 7-24-62 SHEET 4 OF 9
 I.D. ALKIRE 1962



ASH PAN DETAILS
 B&O P-7 #5300 1" I.D. ALKIRE 1962
 SHEET 5 OF 9

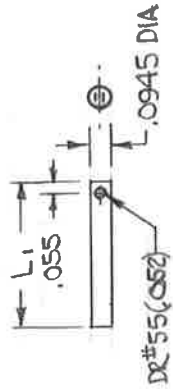
VIEW B₂-B₂
 ASH PAN BACK PLATE INSTAL.



SECTION C-C
 DETAIL OF ASH DOOR ACTUATOR

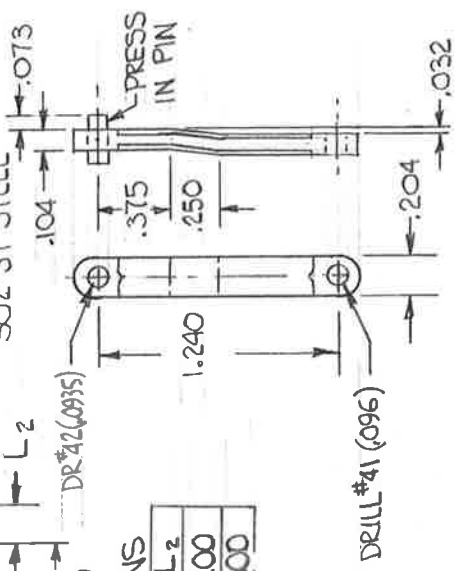
ASH PAN
 B&O P-7 #5300 1"
 SHEET 6 OF 9
 I.D. ALKIRE 1962

L1	REQD
.750	6
.850	2

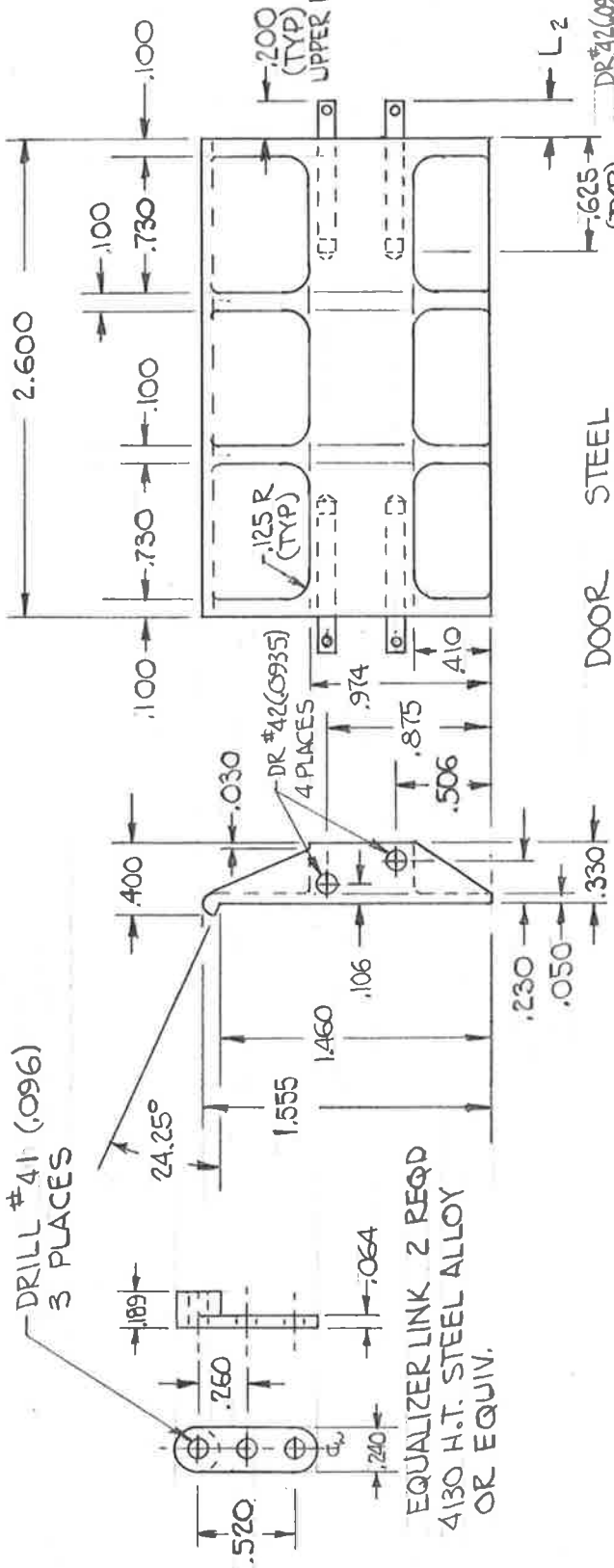


PIN 8 REQD
302 ST STEEL
PINS MUST INSTALL
WITH A DRIVE FIT

PIVOT PIN 4 REQD
302 ST STEEL



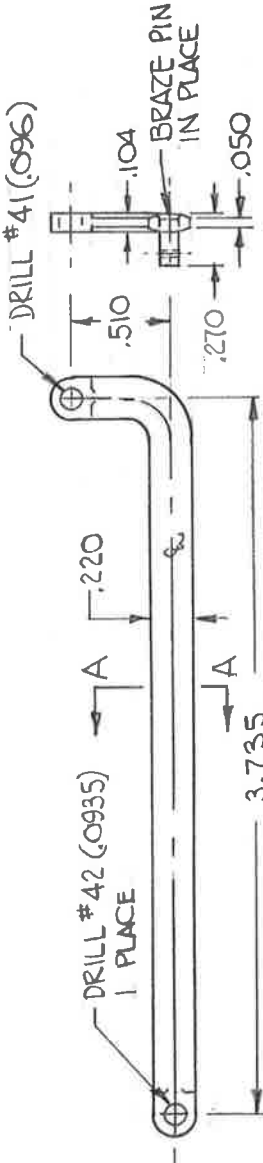
PIVOT LINK 4 REQD
STEEL



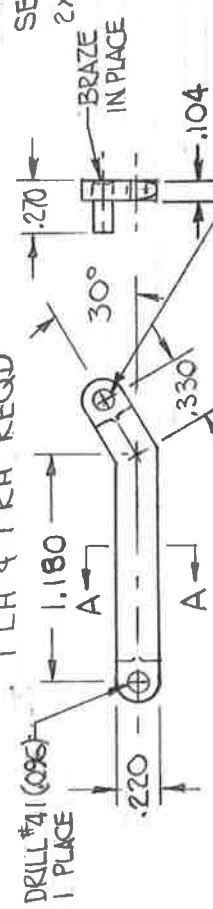
EQUALIZER LINK 2 REQD
4130 H.T. STEEL ALLOY
OR EQUIV.

DOOR STEEL
1 FRONT & 1 REAR REQD

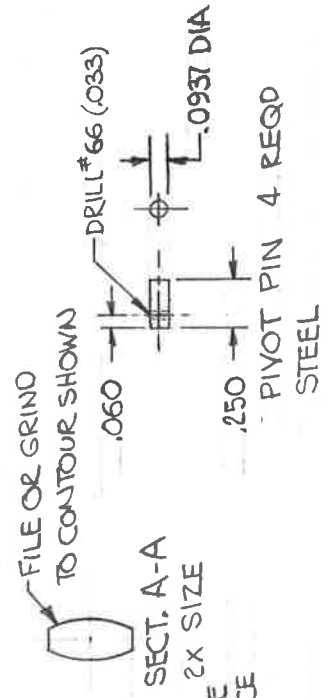
DOOR PINS	L2
REAR	.200
FRONT	.300



TIE LINK LH SHOWN RH OPP
4130 H.T. STEEL ALLOY
1 LH & 1 RH REQD

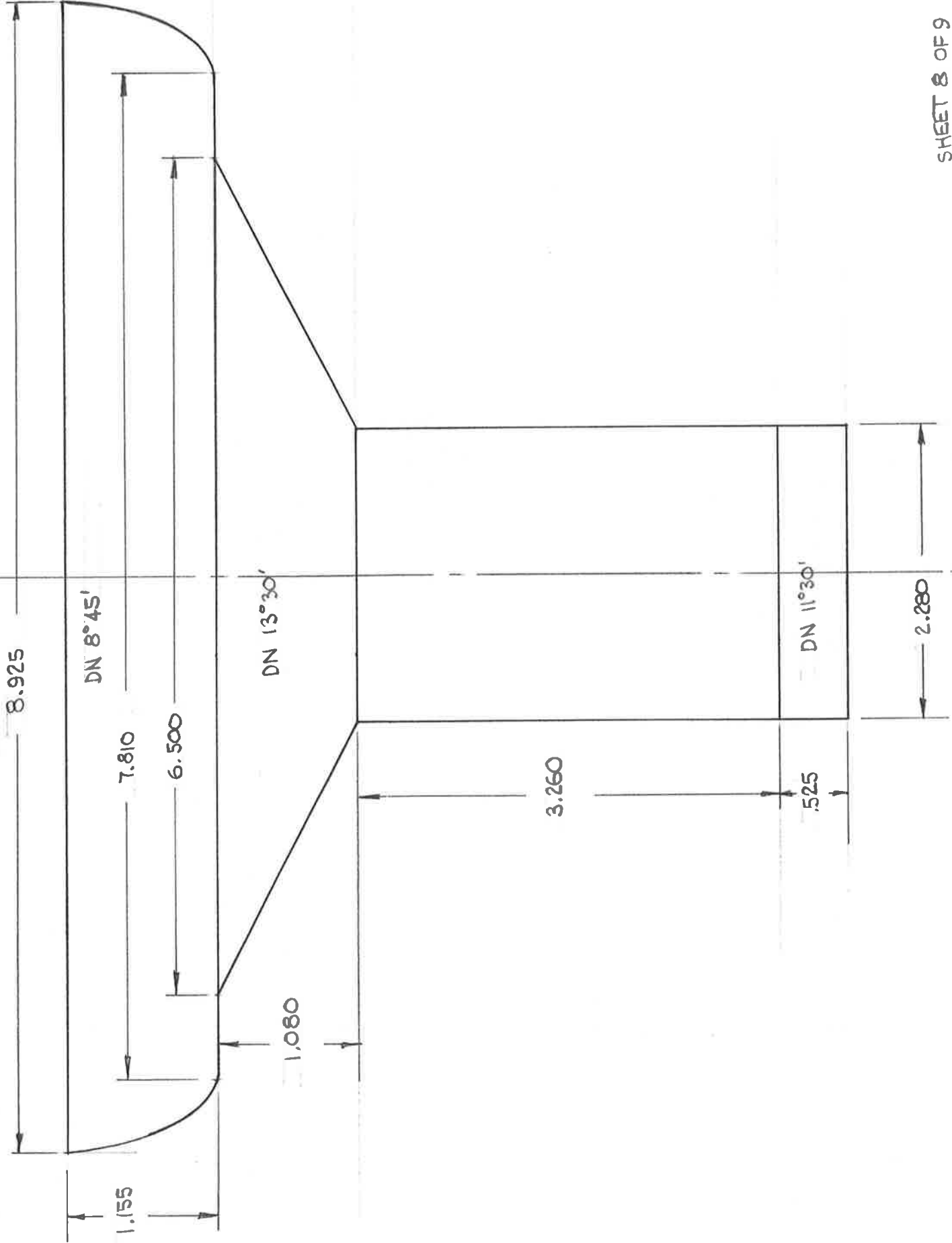


MAIN LINK LH SHOWN RH OPP
4130 H.T. STEEL ALLOY
1 LH & 1 RH REQD



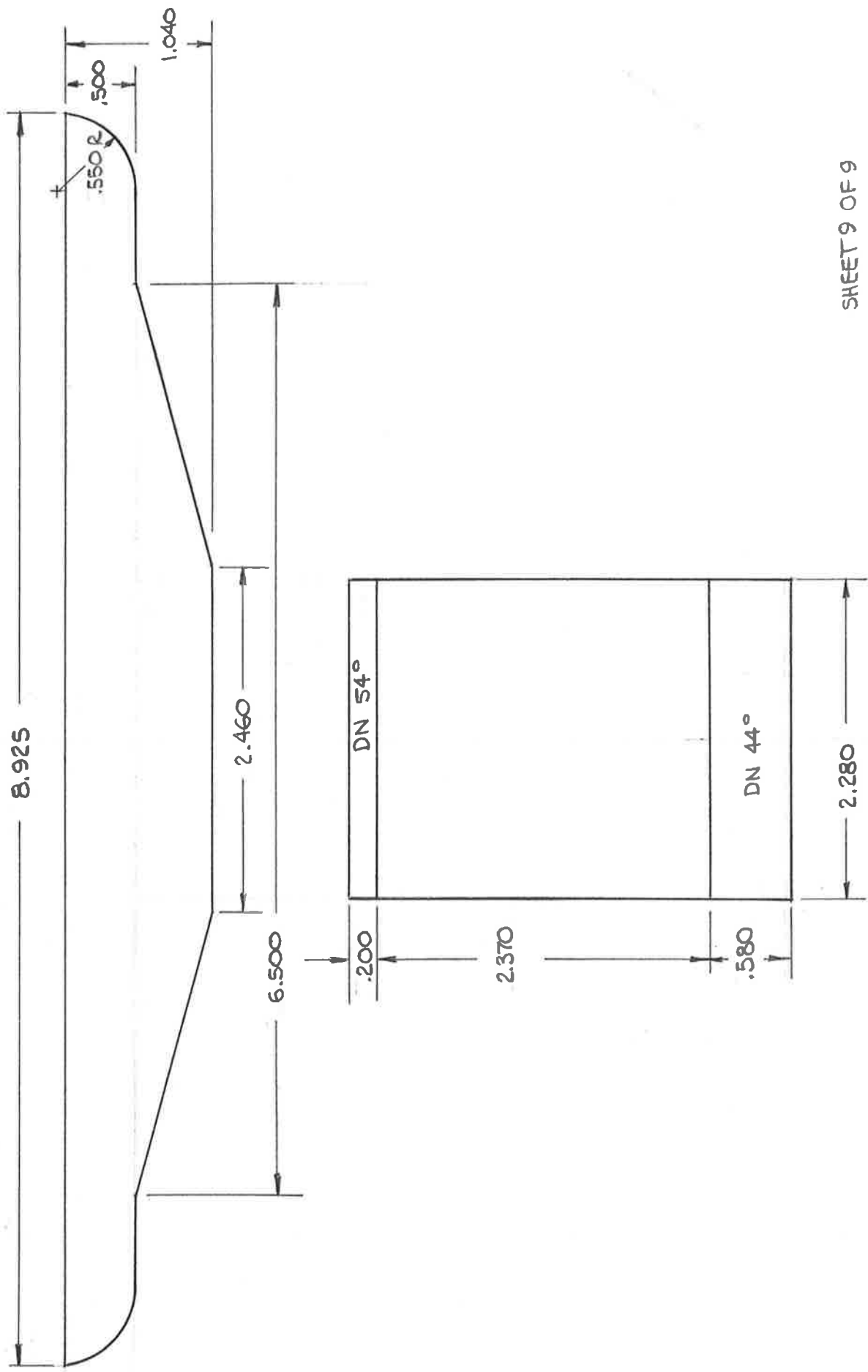
PIVOT PIN 4 REQD
STEEL

ASH DUMP DOOR DETAILS
B&O P-7 #5300 1"
SHEET 7 OF 9
I.D. ALKIRE 1962



SHEET 8 OF 9

FLAT PATTERN - FWD PANEL
 ASH PAN 1.D. ALKIRE 1962
 B40 P7 *5300 1"



SHEET 9 OF 9
 FLAT PATTERN BACK PLATES
 ASH PAN
 B&O P-7 *5300 1"
 I.D. ALK/BE 1962