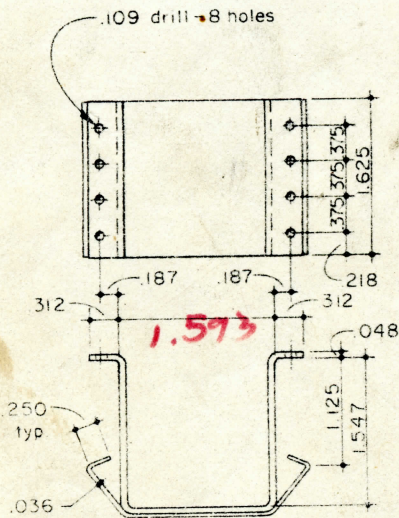
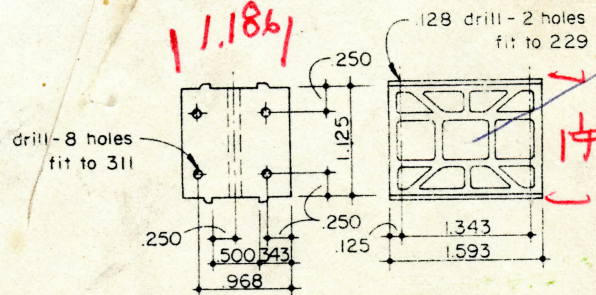


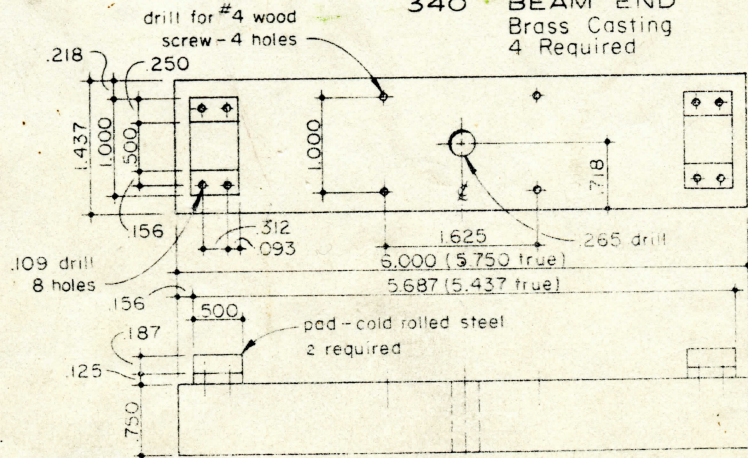
079 TENDER TRUCK GROUP



312 SPRING PAD  
Cold Rolled Steel  
4 Required



340 BEAM END  
Brass Casting  
4 Required



303 TENDER BOLSTER  
Hardwood  
2 Required

Warren Weston has 1/2" scale castings and drawings available for the D&RGW 4-6-0. Some rolling stock castings are also available. See his ad on page 74 for further information.