

More tender frame details — RIO GRANDE'S T-12 TEN WHEELERS

by Warren K. Weston
and Gail O. Gish

PART 22

PHOTOS FROM THE COLLECTION OF WARREN K. WESTON
DRAWINGS BY JERRY WILLIAMS FROM DESIGN BY WARREN K. WESTON

Last month we started work on the Tender Frame so this month let's get to work and finish this group.

266, 267 OUTSIDE FRAMES

Lay out the hole locations on the wood. I would suggest that the parts that mount be used to act as a drill guide because small drills might deflect on the grain of the wood.

269 REAR BEAM

Lay out the holes as you did on the Outside Frames. The bottom piece, .375 x .812 x 2.00, should be firmly anchored to the main part of the beam.

271, 272 INSIDE FRAMES

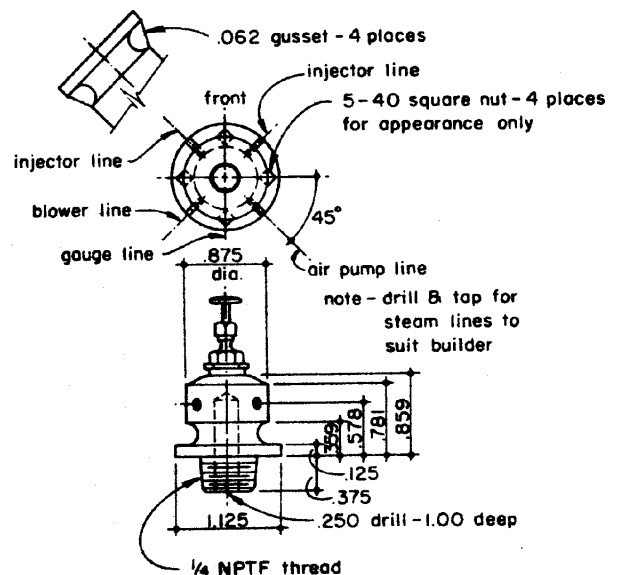
Lay out the holes as you did on the Outside Frames. Now that you have all the

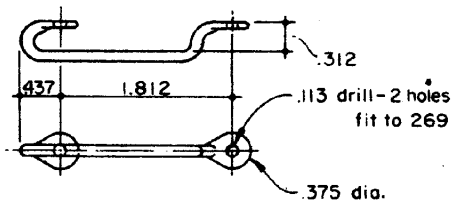
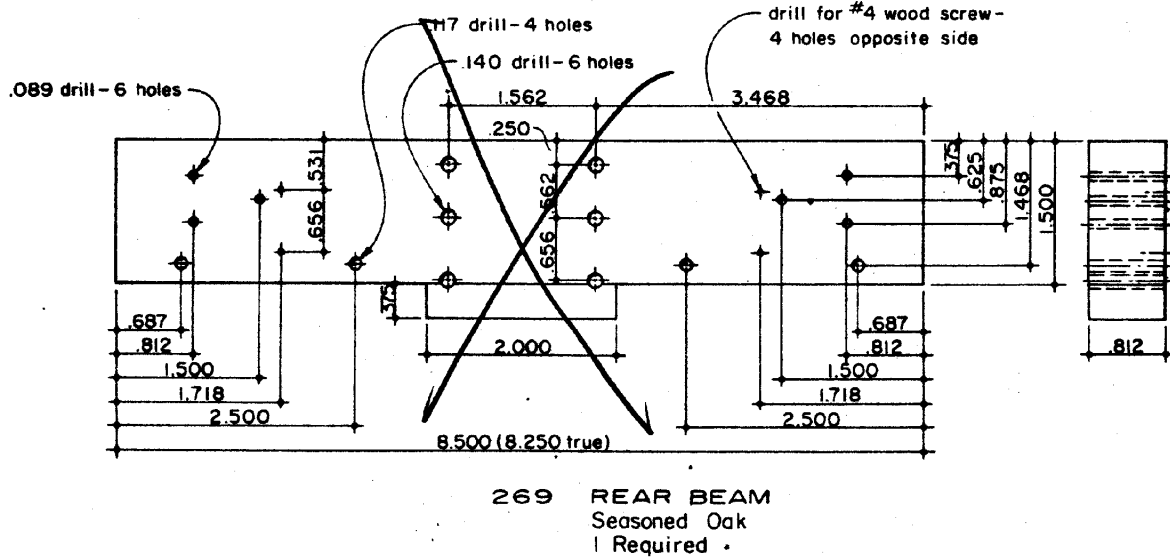
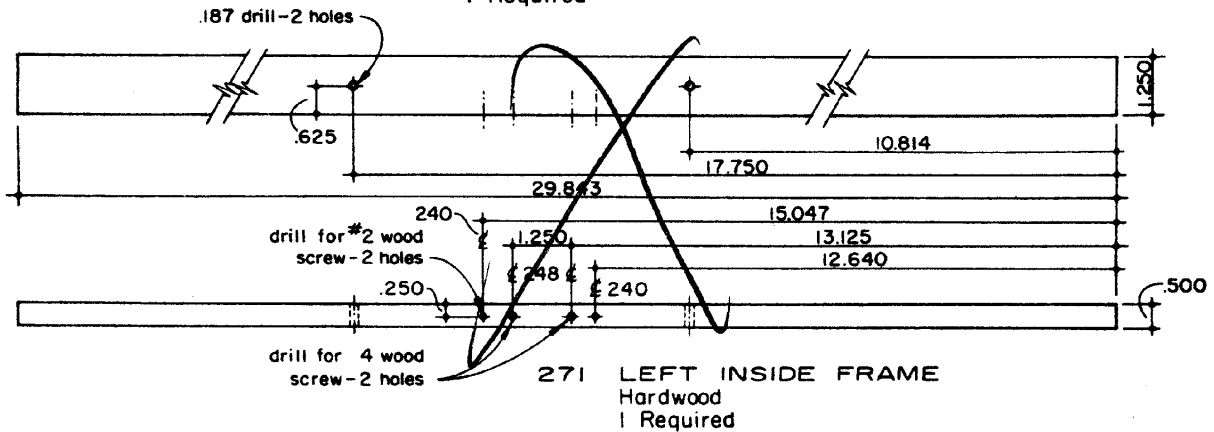
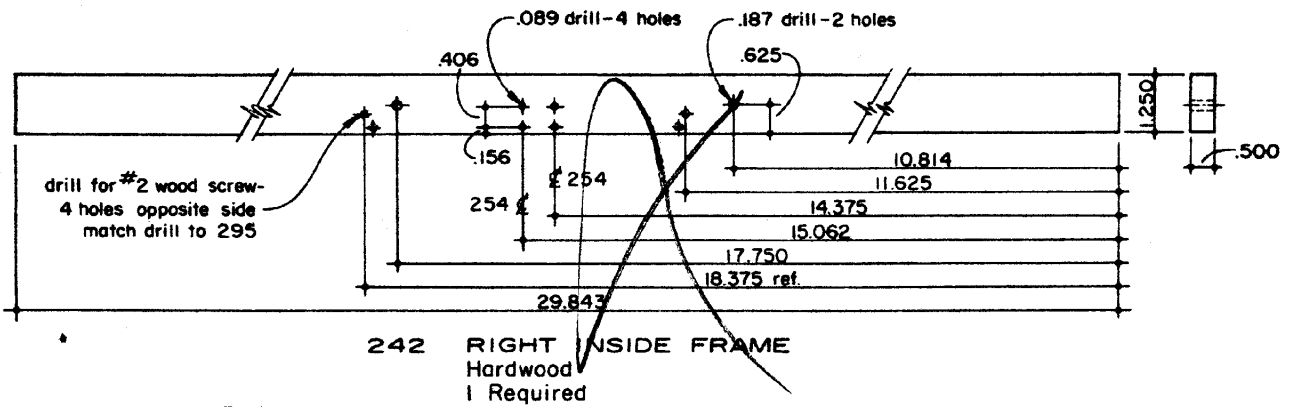
components for the Frame fabricated, you should set them aside until we get the Tender Brake components fabricated. There are parts that will be difficult to assemble into the frame that is put together.

Warren Weston has 1-1/2" scale castings and drawings available for the D&RGW 4-6-0. Some rolling stock castings are also available. See his ad on page 74 for further information.

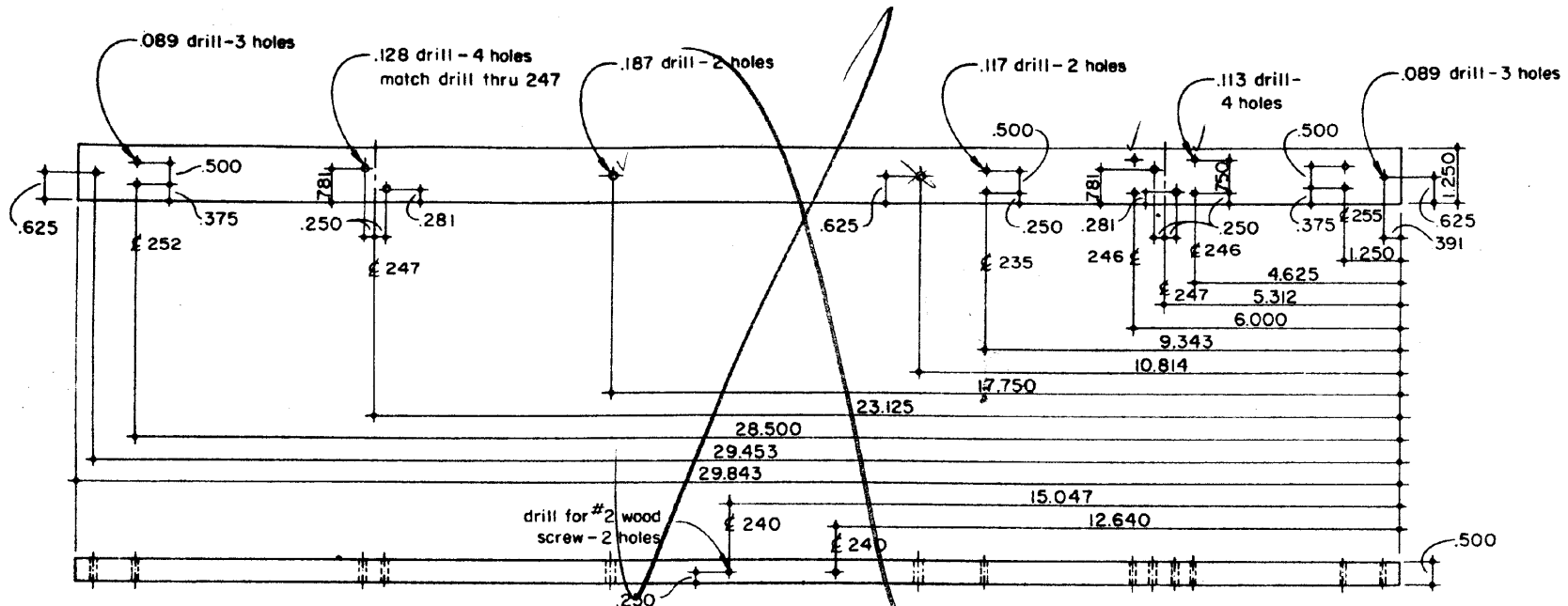
PART 20 Drawing Correction

The 305 Turret drawing from the December, 1988, segment of *Rio Grande's T-12 Ten Wheelers* showed the injector lines positioned improperly. The drawing at right shows this area correctly.

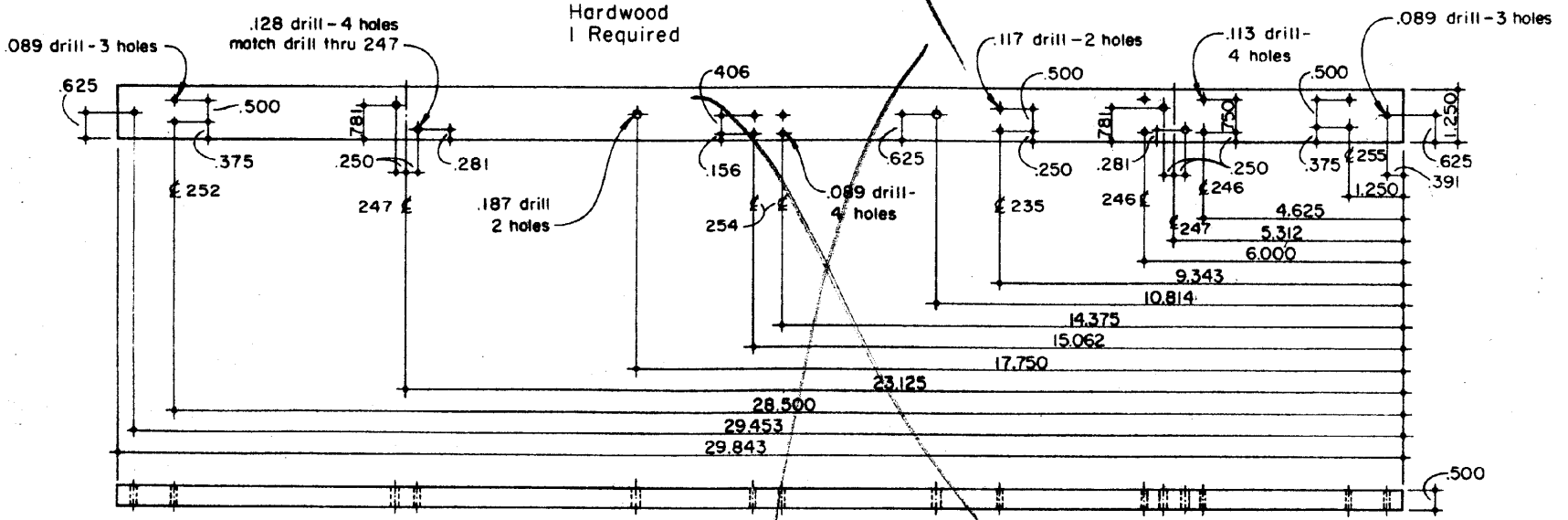




392 REAR HANDRAIL
.109 Dia. Wire
2 Required



266 LEFT OUTSIDE FRAME
Hardwood
1 Required



267 RIGHT OUTSIDE FRAME
Hardwood
1 Required

