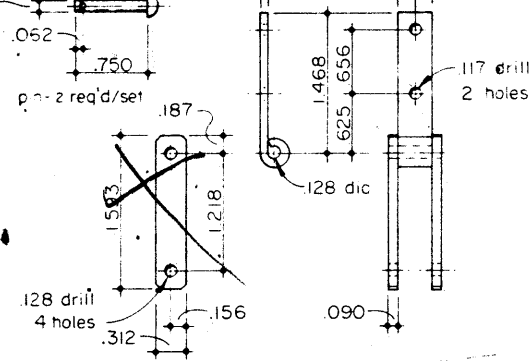
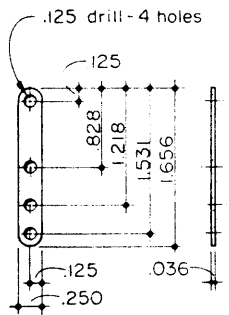


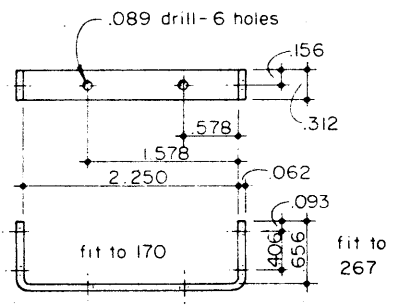
359 FRONT BEAM HANGER
Cold Rolled Steel
2 Sets Required



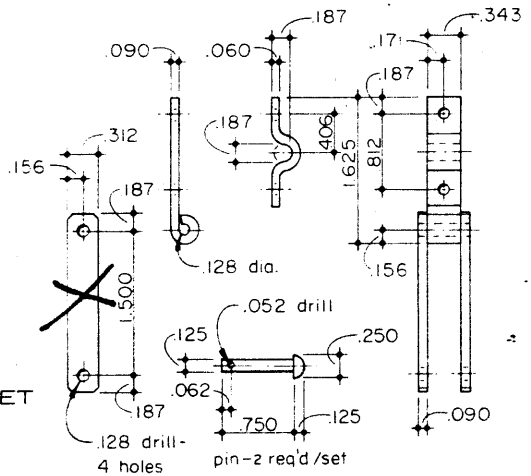
360 REAR BRAKE HANGER
Cold Rolled Steel
2 Sets Required



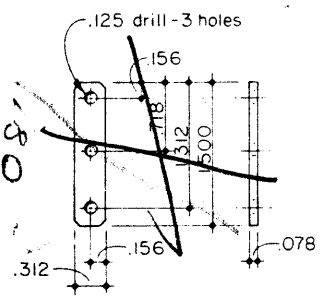
238 LEVER LINK
Cold Rolled Steel
2 Required



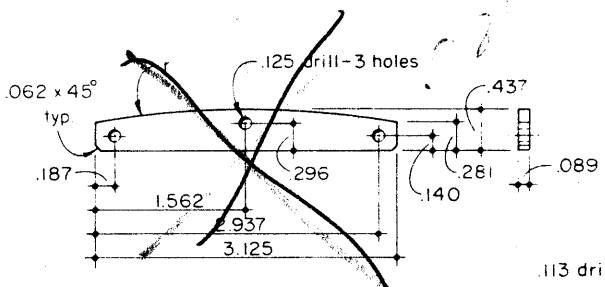
254 BRAKE CYLINDER BRACKET
Cold Rolled Steel
2 Required



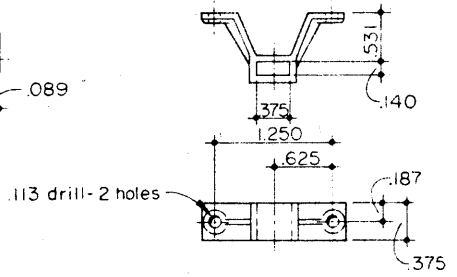
236 BRAKE HANGER
Cold Rolled Steel
4 Sets Required



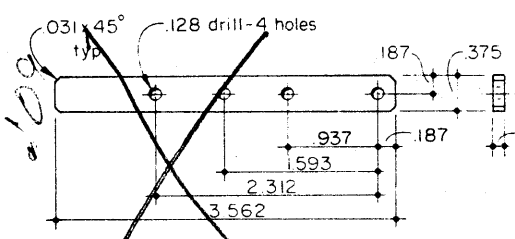
239 BRAKE LINK
Cold Rolled Steel
1 Required



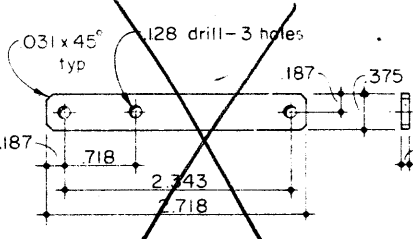
259 BRAKE LINK
Cold Rolled Steel
1 Required



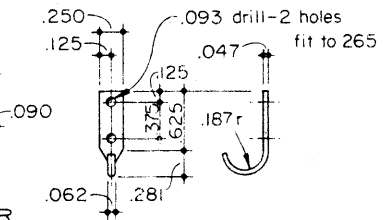
248 DEAD LEVER BRACKET
Brass
1 Required



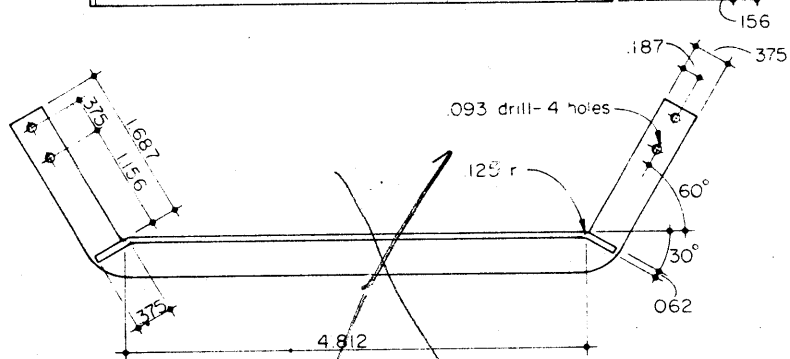
361 BRAKE EQUALIZER
Cold Rolled Steel
1 Required



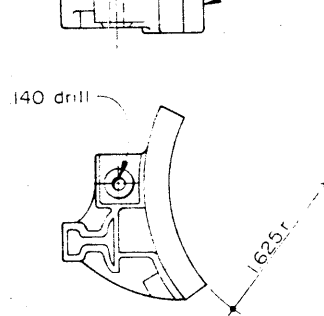
358 BRAKE BEAM EQUALIZER
Cold Rolled Steel
4 Required



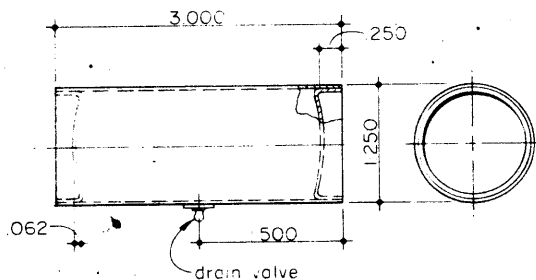
341 BRAKE BEAM HOOK
Cold Rolled Steel
8 Required



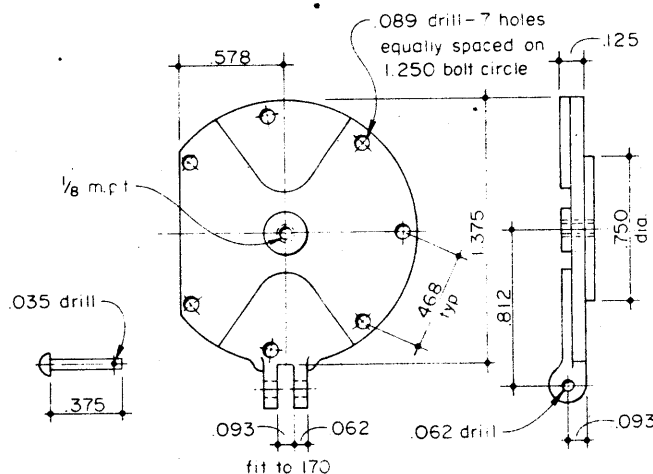
295 BRAKE SLIDE BAR
Cold Rolled Steel
1 Required



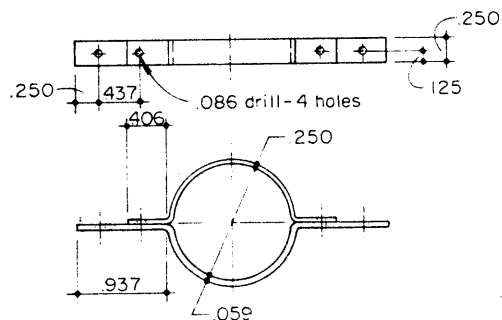
385 BRAKE SHOE
Brass Casting
4 Required
(2 as shown - 2 opposite)



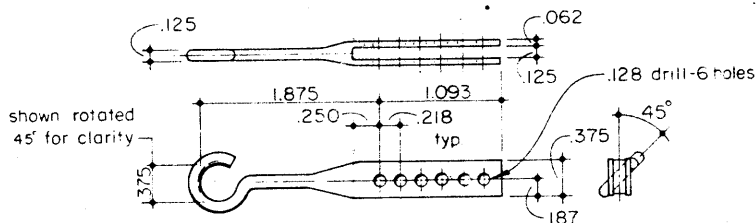
241 BRAKE TANK
031 Copper
1 Required



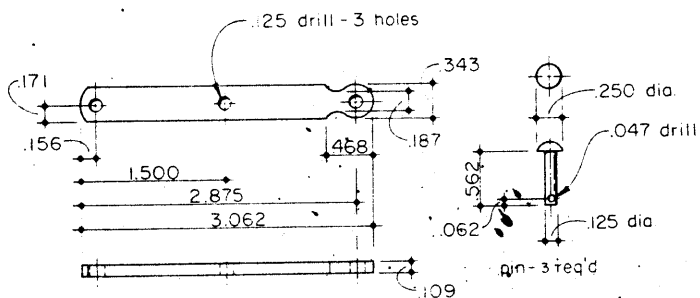
260 BRAKE CYLINDER BACK
Brass
1 Required



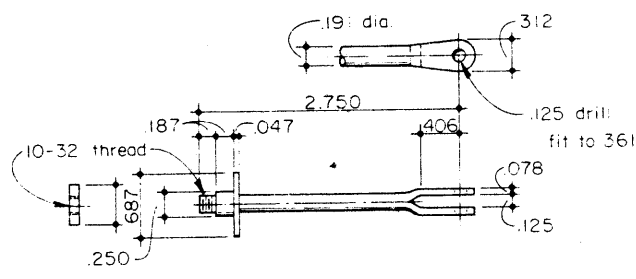
240 TANK BRACKET
Cold Rolled Steel
2 Required



345 BRAKE ANCHOR
Cold Rolled Steel
2 Required



237 DEAD LEVER
Cold Rolled Steel
1 Required



384 BRAKE CYLINDER ROD
Cold Rolled Steel - 1 Required
also required:
2 - 750 dia brake cylinder cups
2 - 468 max o.d x 1500 long springs



Looking down through the flooring at the Cylinder.



Brake Hanger Brackets from above through the floor.

clearance, but the effect does look good.

**237, 238, 239, 259, 358, 361,
LEVERS, LINKS AND EQUALIZER**

Lay out and file to shape per the drawings. Drill close-fitting holes to the pins so

that you will have less loss of motion throughout the linkage system.

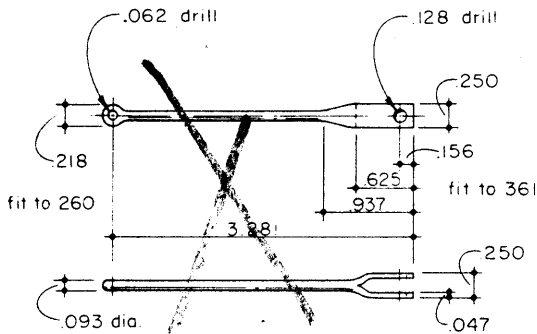
the Tank and match drill the clamping holes and the mounting holes to the frame.

240 TANK BRACKET

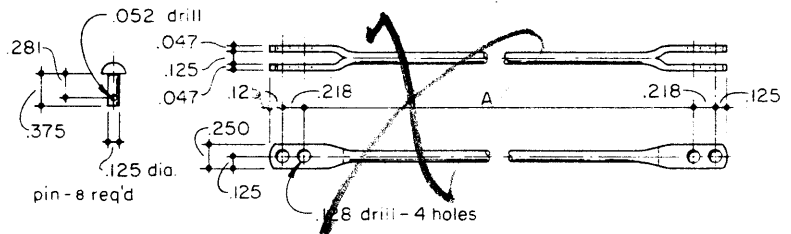
Form both halves to fit snugly around

241 BRAKE TANK

This air reservoir happened to be made



261 CYLINDER LINK
Cold Rolled Steel
1 Required



344 BRAKE LINK (A=11.814)
362 BRAKE LINK (A= 8.625)
Cold Rolled Steel
2 Each Required

Warren Weston has 1-1/2" scale castings and drawings available for the D&RGW 4-6-0. Some rolling stock castings are also available. See his ad on page 63 for further information.