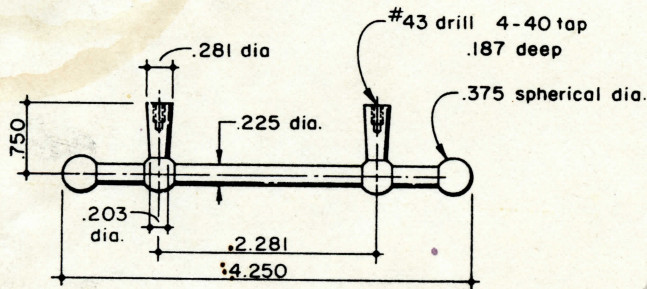


boxes have steam oil pump and reservoir inside. The box is made to a close fit, front to back, on the reservoir cover and the bottom is open for clearance around the ratchet arm of the pump. Be careful to check the clearance of the smokebox door before you settle on the height and mounting bracket location.

274 PILOT TRUCK CHAIN

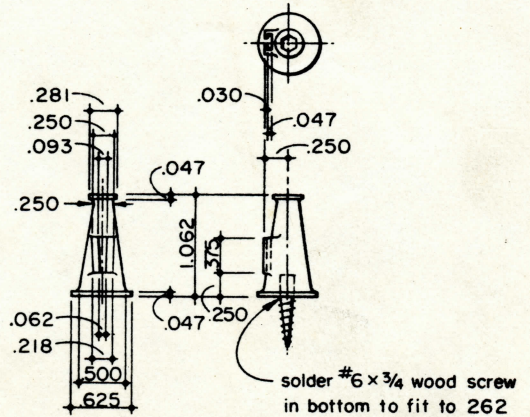
The prototype length as shown, caused problems in negotiating sharp radii curves when we operated Gail's locomotive on the *Colorado Springs Black Forest* track several years ago. Longer links would allow more swing or two ad-

ditional links would solve the problem. Either solution does not accomplish the desired limitation to the skew of the pilot truck during a derailment. So if you don't accomplish anything you may decide to operate without a chain and save it for use during "show and tell" only.



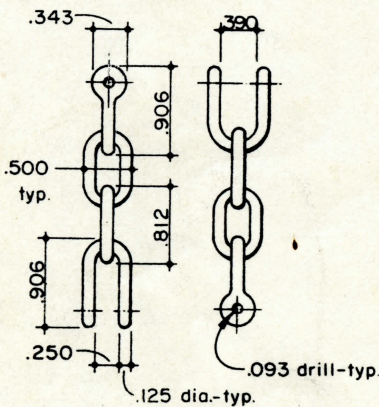
222 HANDRAIL
Brass
1 Required

5/8 Brass

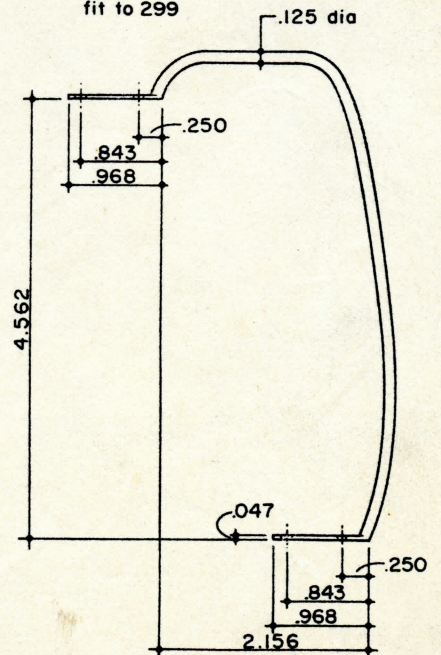
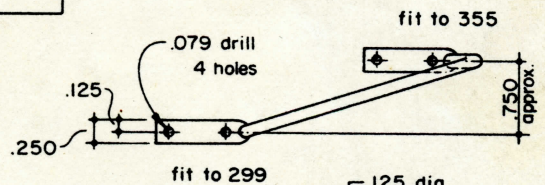


294 FLAG HOLDER
Brass
2 Required

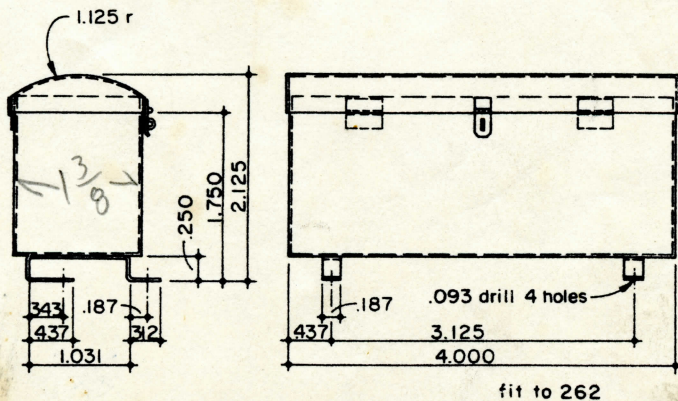
Warren Weston has 1 1/2" scale castings and drawings available for the D&RGWW 4-6-0. Some rolling stock castings are also available. See his ad on page 6 for further information.



274 PILOT TRUCK CHAIN
Cold Rolled Steel
2 Required



354 HANDRAIL
Cold Rolled Steel
1 Required



383 TOOL BOX
.015 Brass
1 Required