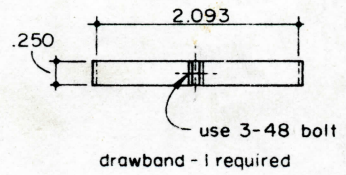
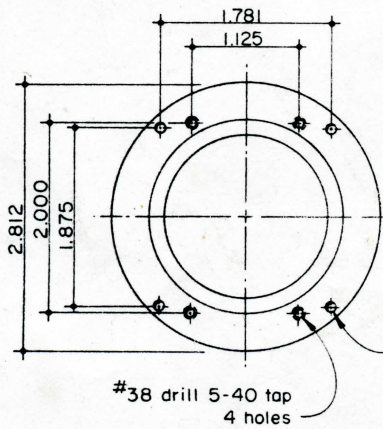
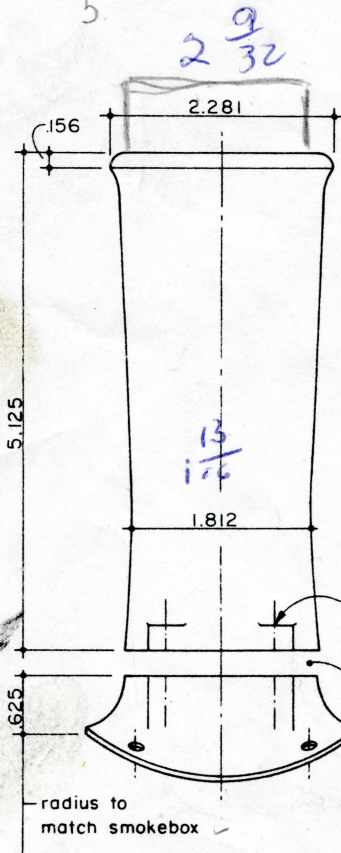


298 SMOKE STACK
 .025 Cold Rolled Steel
 1 Required

Warren Weston has 1/2" scale castings and drawings available for the D&RGWW 4-6-0. Some rolling stock castings are also available. See his ad on page 4 for further information.

Handwritten notes in blue ink:
 5 1/100 5/32 5/8
 5 + 3
 6 3/8
 + 2
 8 + 5 + 3



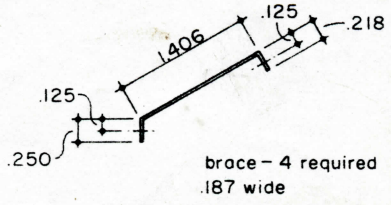
321 STACK BRACES
 .047 Brass
 1 Set Required

.116 drill - 4 holes square to surface of smokebox

.128 drill - 4 holes

part casting & face flat

radius to match smokebox



304 SMOKE STACK
 Aluminum Casting
 1 Required