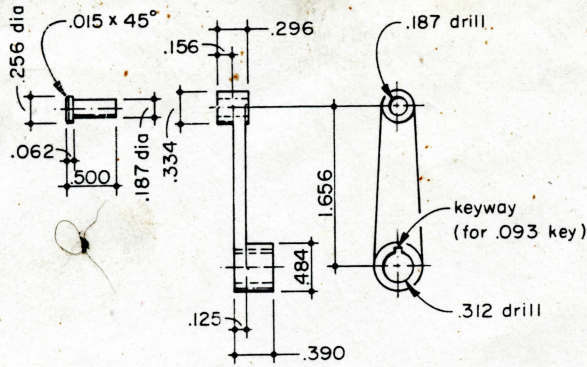
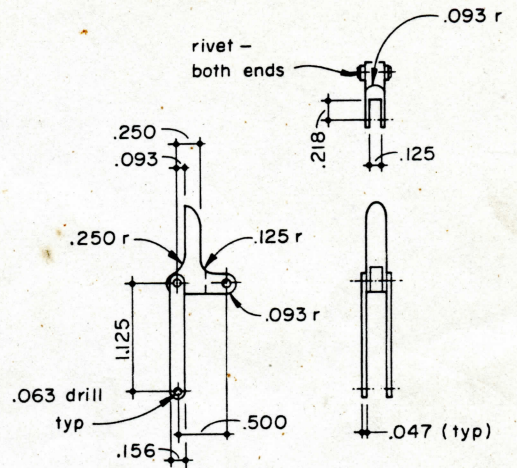


077 VALVE GEAR GROUP

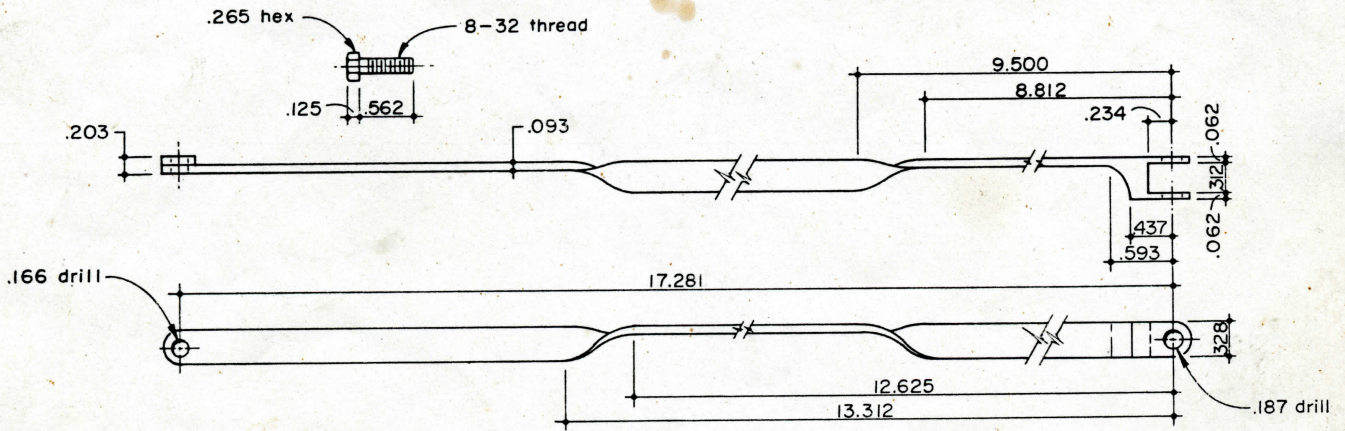
Warren Weston has 1/2" scale castings and drawings available for the D&RGW 4-6-0. Some rolling stock castings are also available. See his ad on page 52 for further information.



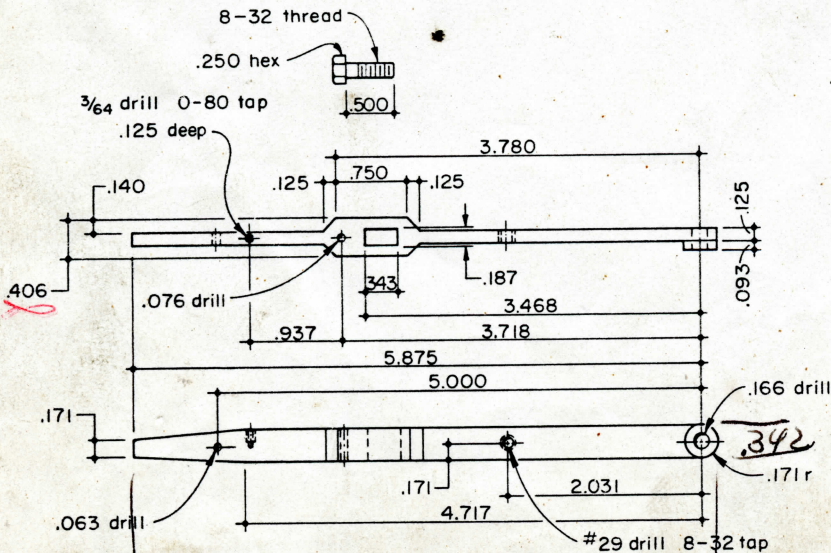
145 UPPER REVERSE SHAFT ARM
Cold Rolled Steel
1 Required



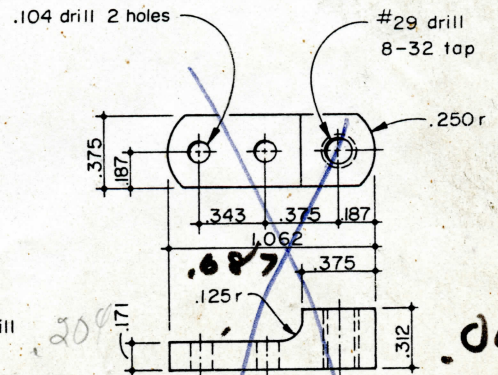
194 RELEASE HANDLE
Cold Rolled Steel
1 Required



146 REACH ROD
Cold Rolled Steel
1 Required



193 JOHNSON BAR
Brass Casting
1 Required



169 REVERSE LEVER PIVOT
Cold Rolled Steel
1 Required

6.046