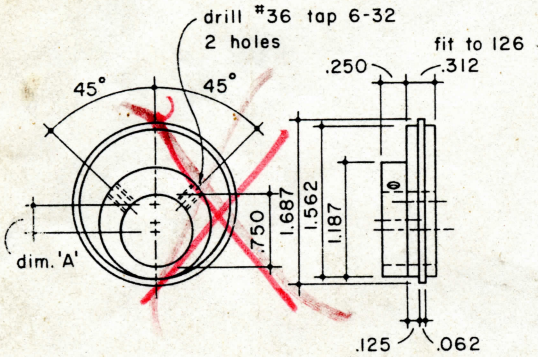
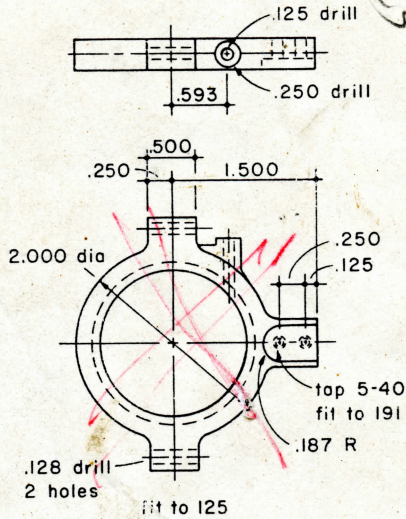


no. reqd.	dim. 'A'	used on
4	.281	t-12, c-19
4	.250	c-16

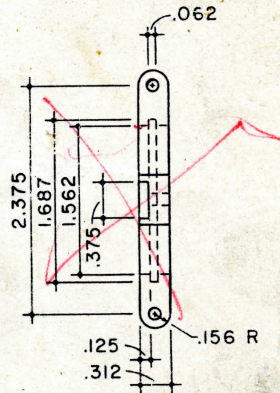
20
 5/16 x 2 1/2 x 2 1/2
 5/16 x 1 1/2



125 ECCENTRIC CAM
 Brass
 4 Required

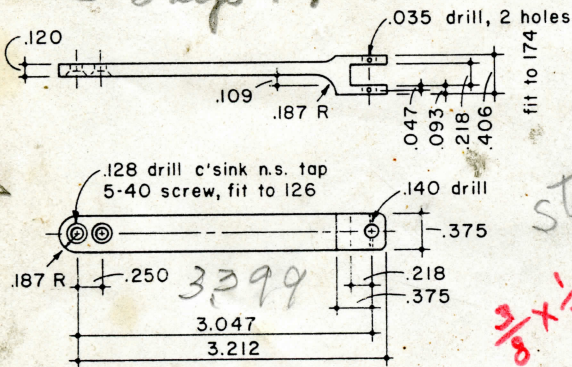


126 ECCENTRIC STRAP
 Brass Casting
 4 Required

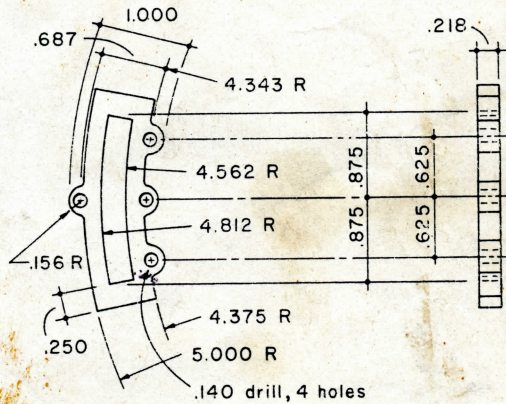


191 ECCENTRIC BLADE
 Brass Casting
 4 Required

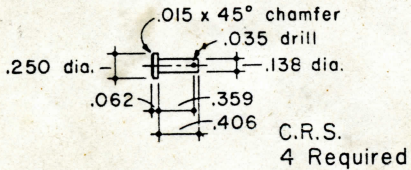
Dave sup + .250



steel
 3/8 x 1/2



174 LINK
 Cold Rolled Steel
 2 Required



770
 715
 657
 13
 13
 24