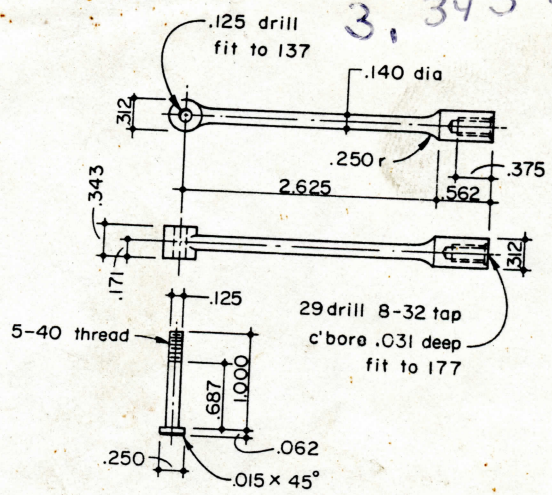
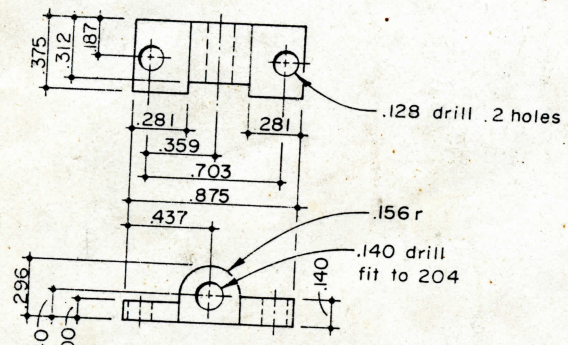


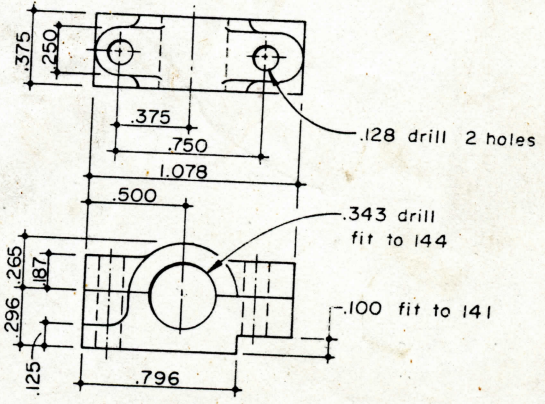
137 ROCKER SHAFT
Cold Rolled Steel
2 Required



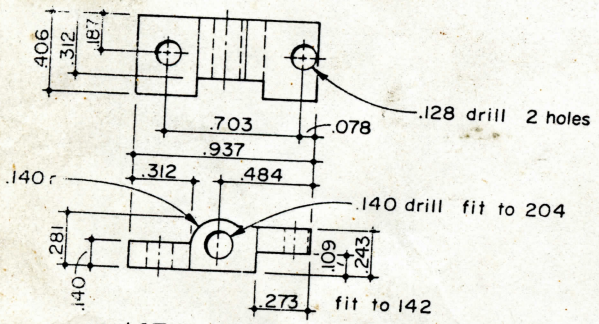
182 VALVE ROD
Cold Rolled Steel
2 Required



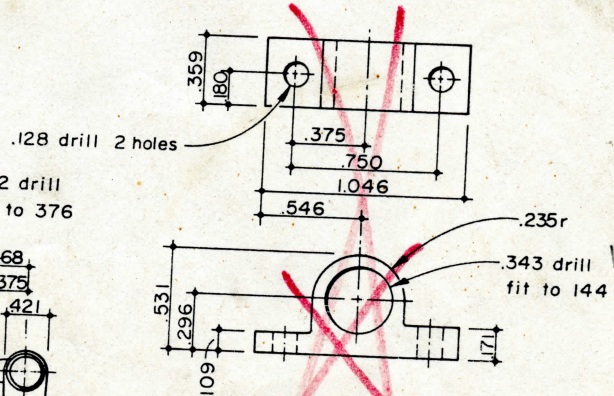
141 VALVE LINK BEARING-R.H.
Cold Rolled Steel, 1 Required



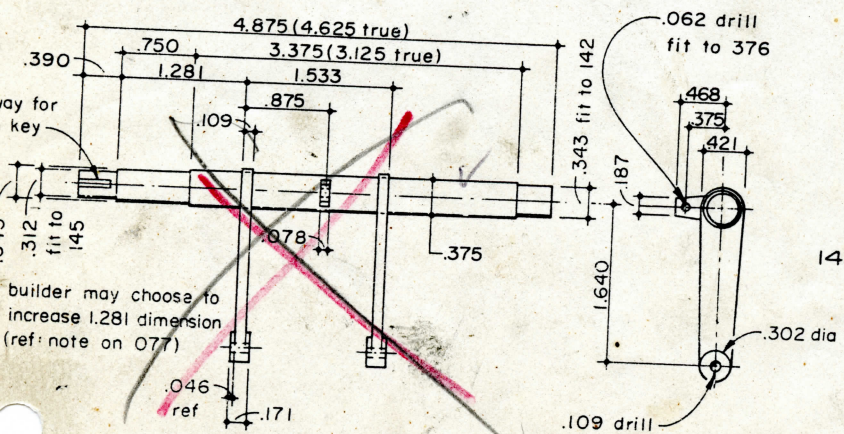
140 REVERSE SHAFT BEARING-R.H.
Cold Rolled Steel
1 Required



143 VALVE LINK BEARING-L.H.
Cold Rolled Steel, 1 Required



142 REVERSE SHAFT BEARING-L.H.
Cold Rolled Steel
1 Required



144 SHAFT ARM ASSEMBLY
Cold Rolled Steel
1 Required

Warren Weston has 1/2" scale castings and drawings available for the D&RGW 4-6-0. Some rolling stock castings are also available. See his ad on page 61 for further information.

3, 343 total length
5/16" r

561
x x

1/2" drill