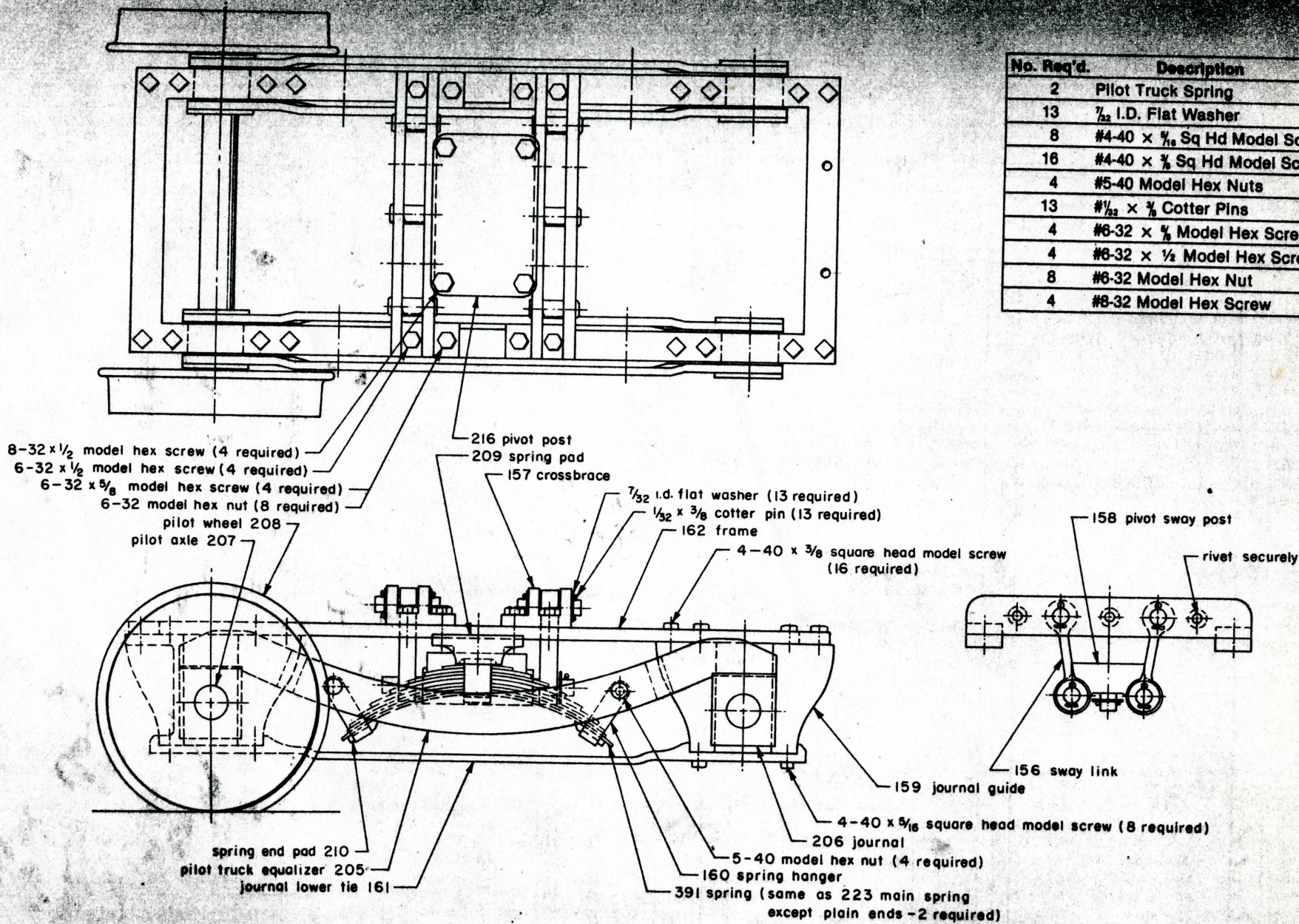


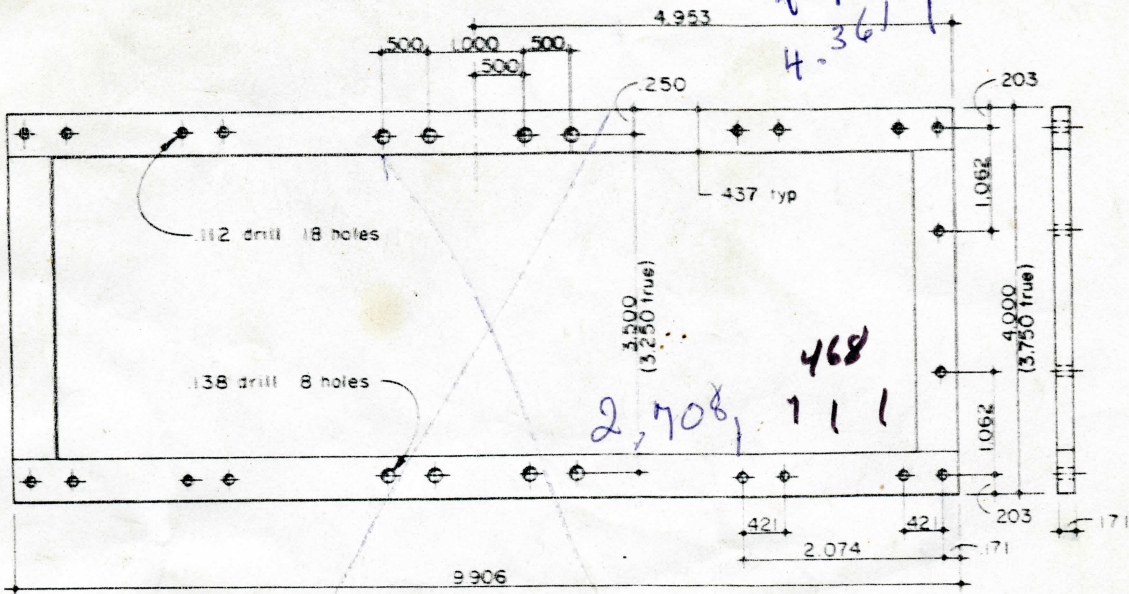
No. Req'd.	Description
2	Pilot Truck Spring
13	$\frac{7}{32}$ I.D. Flat Washer
8	#4-40 x $\frac{7}{16}$ Sq Hd Model Screw
16	#4-40 x $\frac{7}{16}$ Sq Hd Model Screw
4	#5-40 Model Hex Nuts
13	$\frac{1}{32}$ x $\frac{3}{8}$ Cotter Pins
4	#6-32 x $\frac{1}{2}$ Model Hex Screw
4	#6-32 x $\frac{1}{2}$ Model Hex Screw
8	#6-32 Model Hex Nut
4	#8-32 Model Hex Screw



075 PILOT TRUCK GROUP

Warren Weston has 1 1/2" scale castings & drawings available for the D&RGWW 4-6. Some rolling stock castings are also available. See his ad on page 18 for further information.

4-782
4-3611



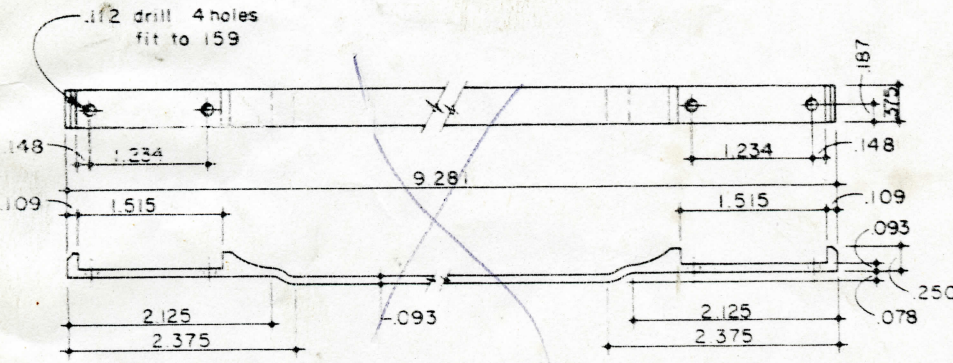
162 FRAME
Cold Rolled Steel
1 Required

2.074
.842

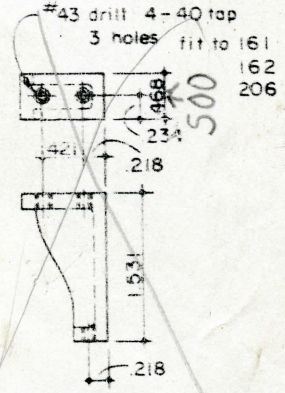
1.232
9375

1.295

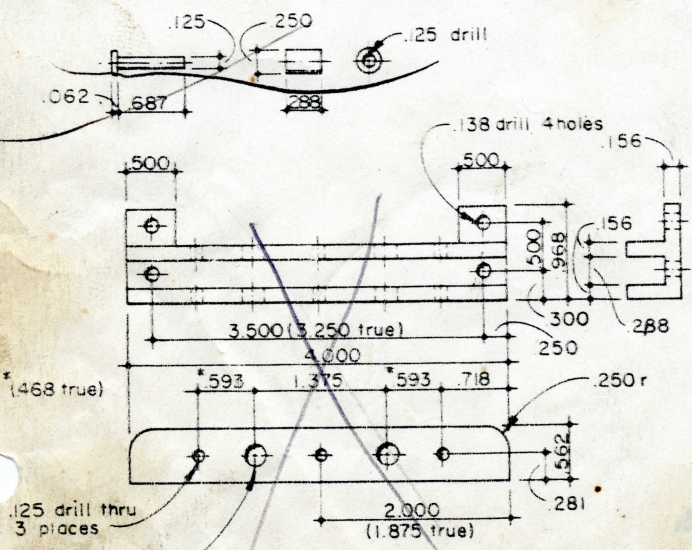
.616



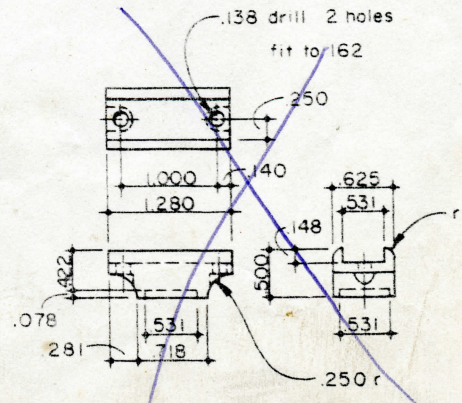
161 JOURNAL LOWER TIE
Cold Rolled Steel
2 Required



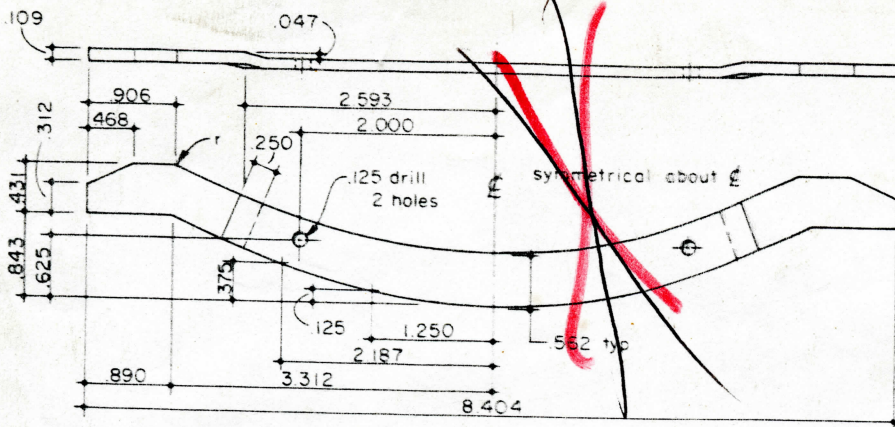
159 JOURNAL GUIDE
Brass Casting
8 Required



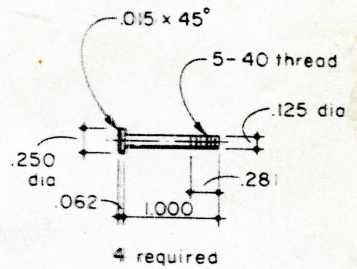
157 CROSSBRACE
Aluminum Casting
2 Required



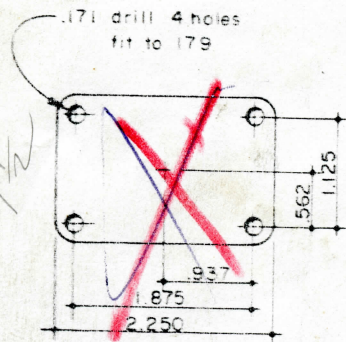
209 SPRING PAD
Cold Rolled Steel
2 Required



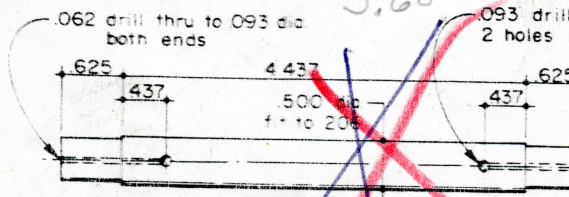
205 PILOT TRUCK EQUALIZER
Cold Rolled Steel
4 Required



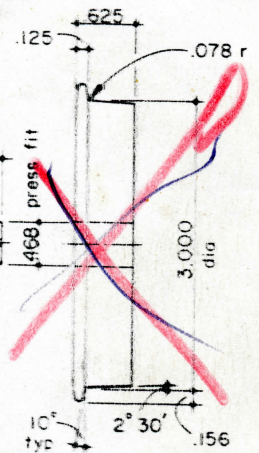
206 JOURNAL
Cast Iron
4 Required



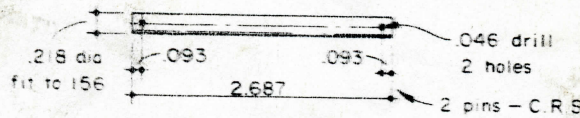
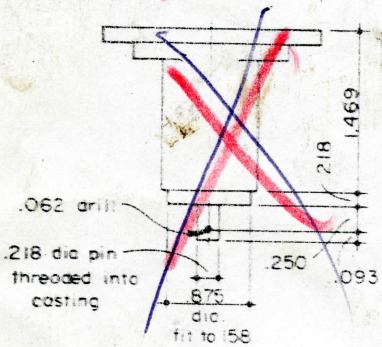
216 PIVOT POST
Casting & Steel Pin
1 Required



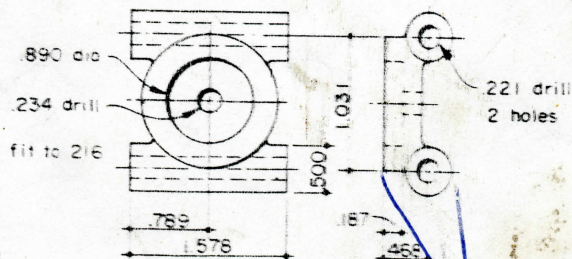
207 PILOT AXLE
Cold Rolled Steel
2 Required



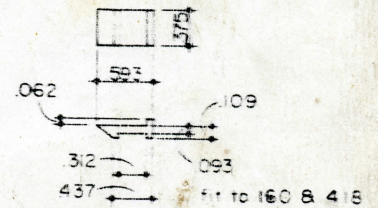
208 PILOT WHEEL
Grey Iron Casting
4 Required



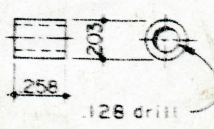
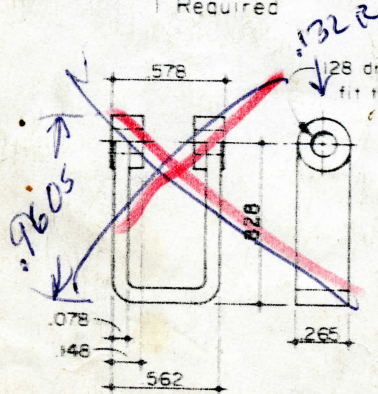
158 PIVOT SWAY POST
Brass Casting
1 Required



210 SPRING END PAD
Cold Rolled Steel
4 Required



160 SPRING HANGER
Cold Rolled Steel
4 Required



156 SWAY LINK
Cold Rolled Steel
4 Required

