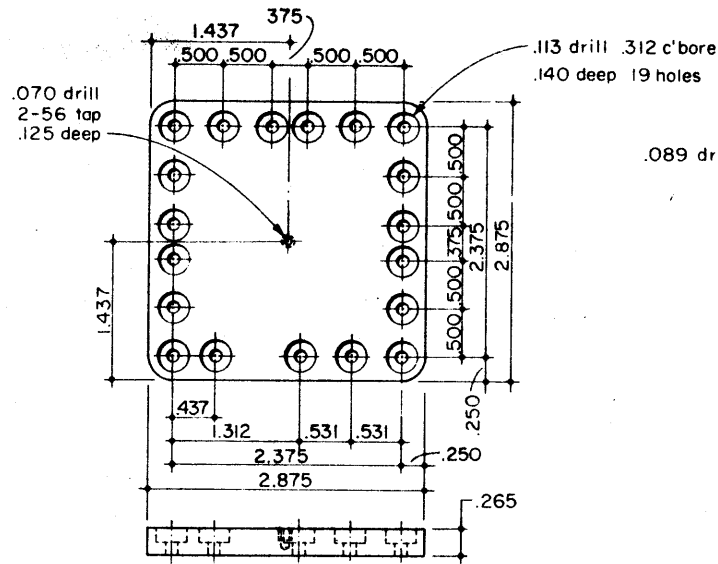
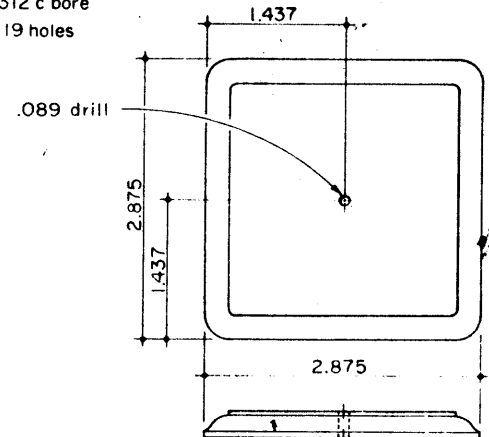


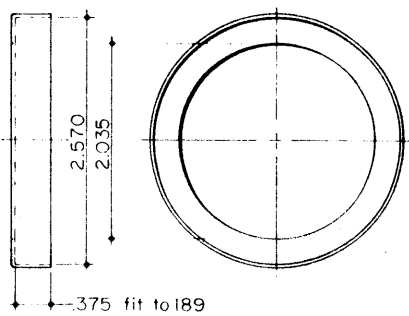
181 VALVE CHEST
Brass Casting
2 Required:
(1 as shown - 1 opposite)



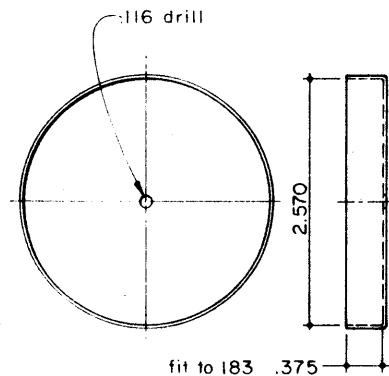
180 VALVE CHEST TOP
Brass Casting
2 Required:
(1 as shown - 1 opposite)



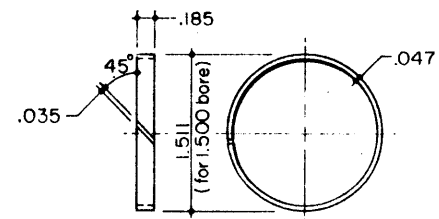
429 VALVE CHEST COVER
Brass Casting
2 Required



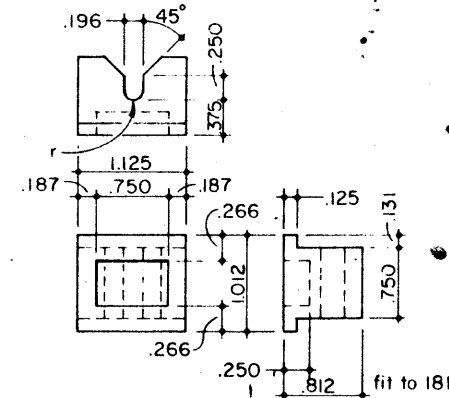
277 BACK CYLINDER COVER
.030 Brass
2 Required



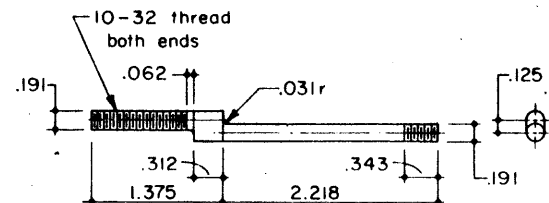
276 FRONT CYLINDER COVER
.030 Brass
2 Required



184 PISTON RING
Cast Iron
4 Required



178 "D" VALVE
Cast Iron
2 Required



177 VALVE STEM
Cold Rolled Steel
2 Required