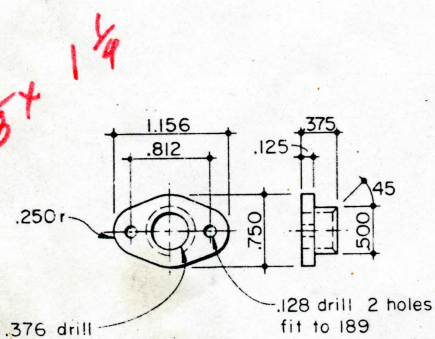
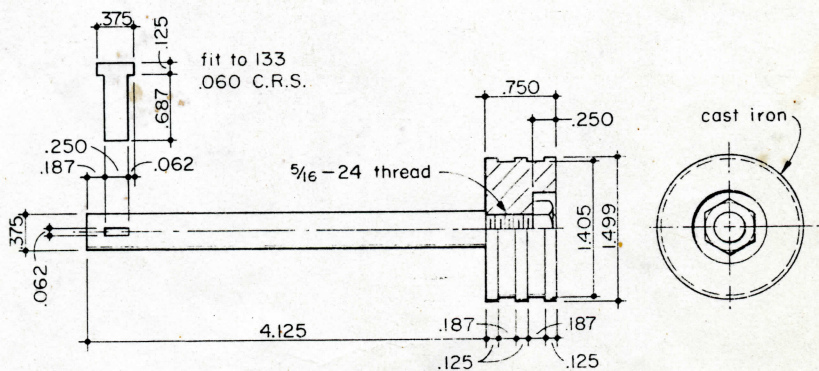


169 CYLINDER GROUP I

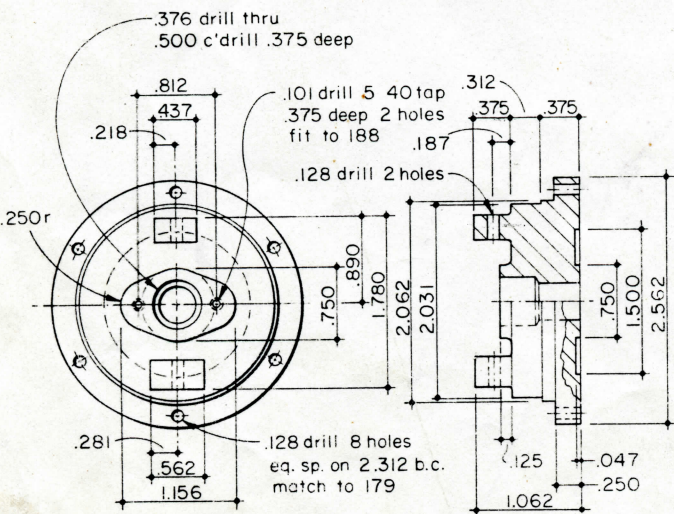


188 PACKING FLANGE

Brass
 2 Required

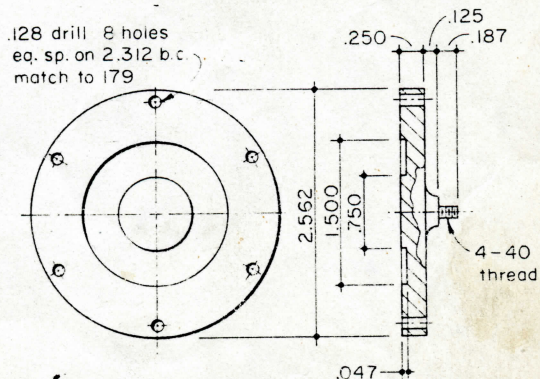


185 PISTON
 Cold Rolled Steel
 2 Required



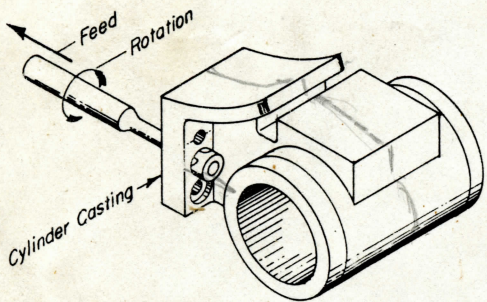
189 CYLINDER BACK HEAD

Brass Casting
 2 Required

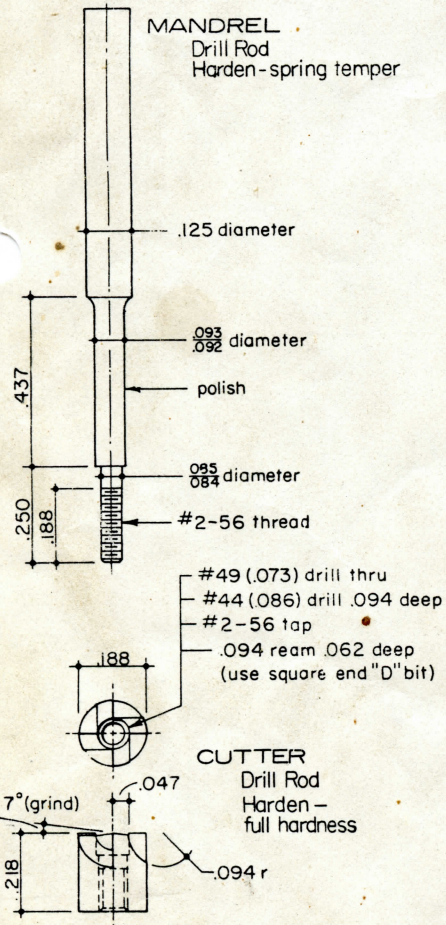


183 FRONT CYLINDER HEAD

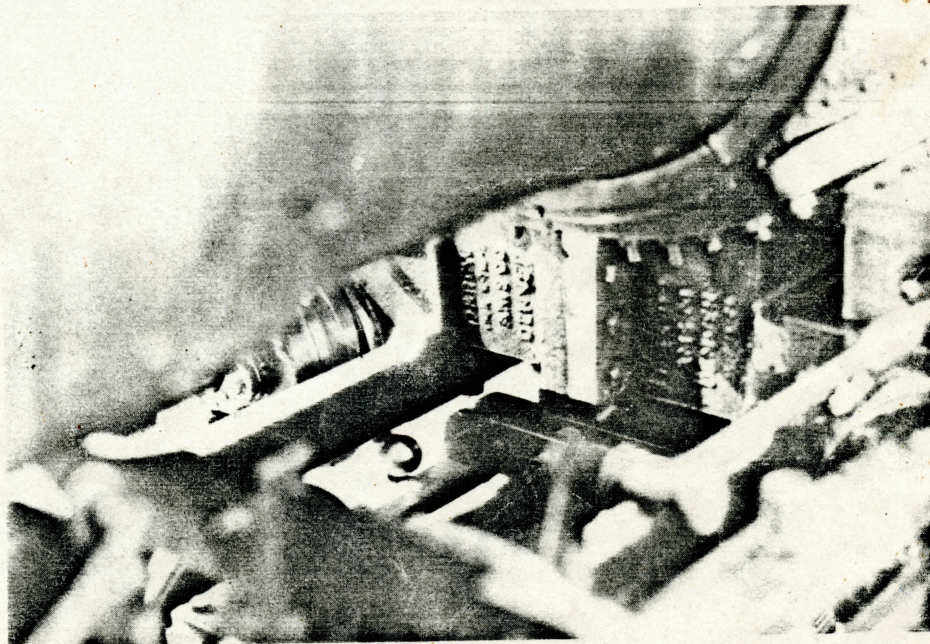
Brass Casting
 2 Required



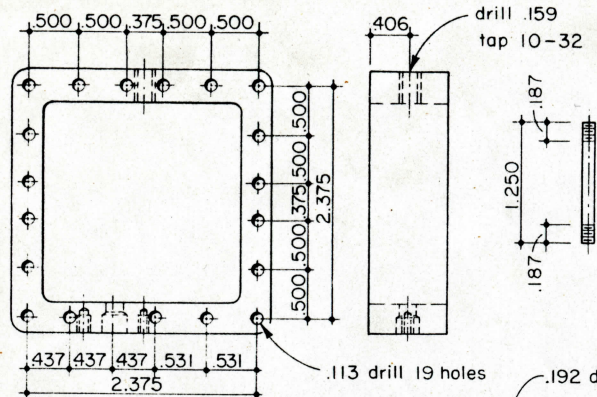
Sketch of
BACK SPOTFACING CUTTER
assembled on mandrel
in cutting position



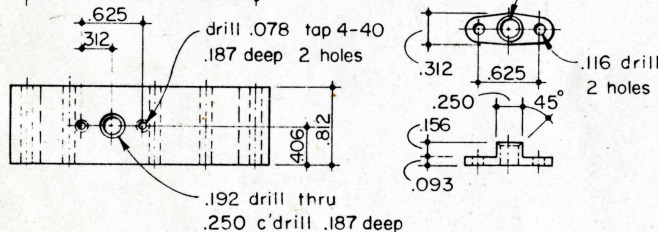
Chalk highlights the lettering on the Smokebox Saddle casting of 169.



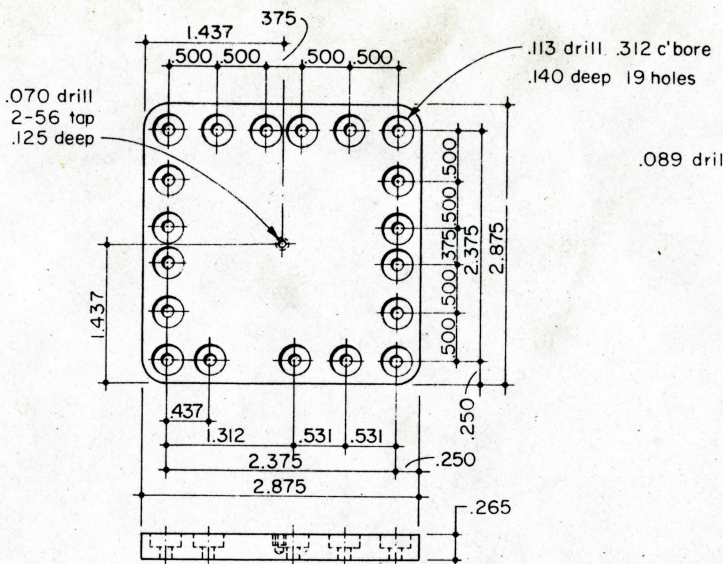
A similar detail of the lettering on the rear side of the Cylinder casting. The boiler is not lagged at the time of this photograph.



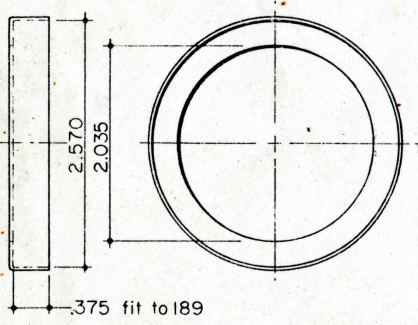
181 VALVE CHEST
Brass Casting
2 Required:
(1 as shown - 1 opposite)



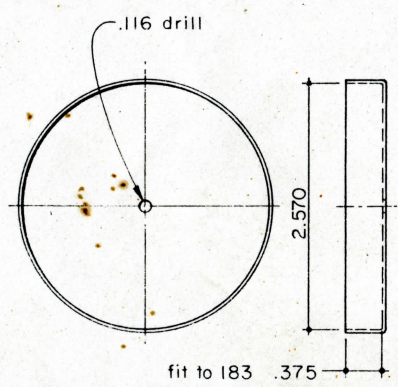
180 VALVE CHEST TOP
Brass Casting
2 Required:
(1 as shown - 1 opposite)



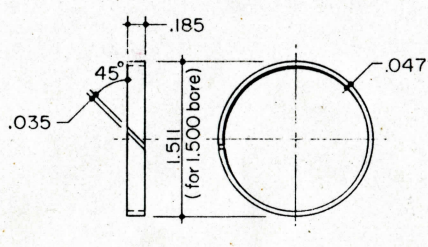
429 VALVE CHEST COVER
Brass Casting
2 Required



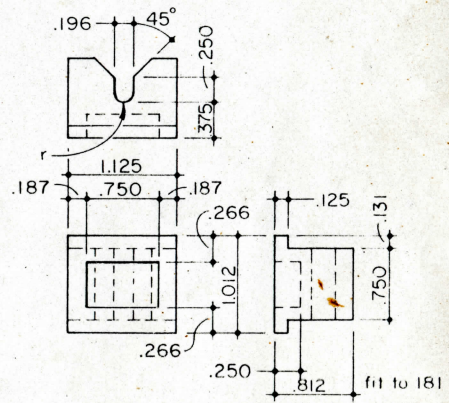
277 BACK CYLINDER COVER
.030 Brass
2 Required



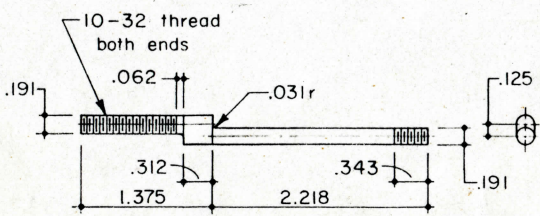
276 FRONT CYLINDER COVER
.030 Brass
2 Required



184 PISTON RING
Cast Iron
4 Required



178 "D" VALVE
Cast Iron
2 Required



177 VALVE STEM
Cold Rolled Steel
2 Required