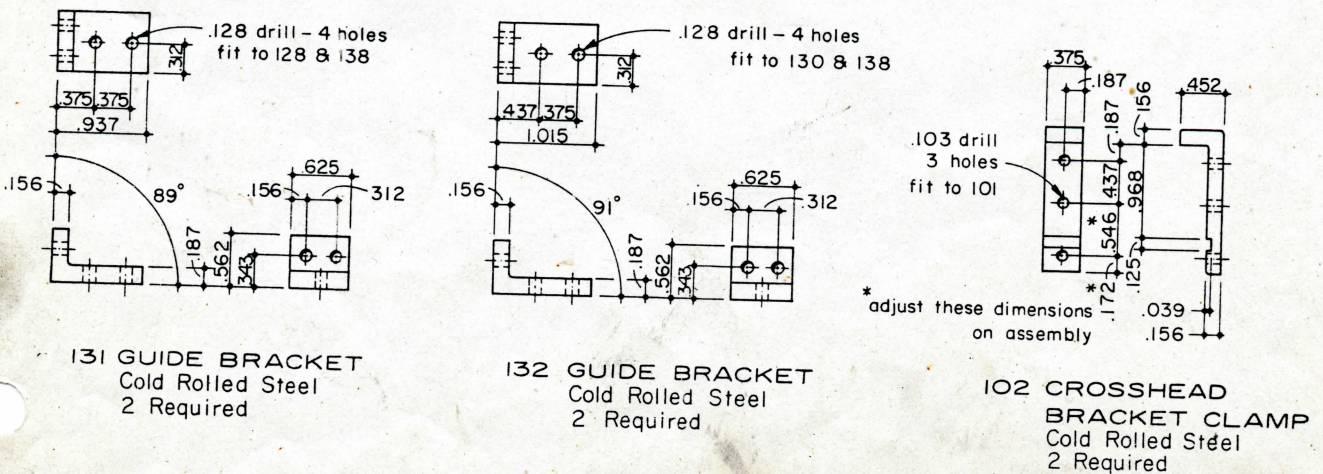
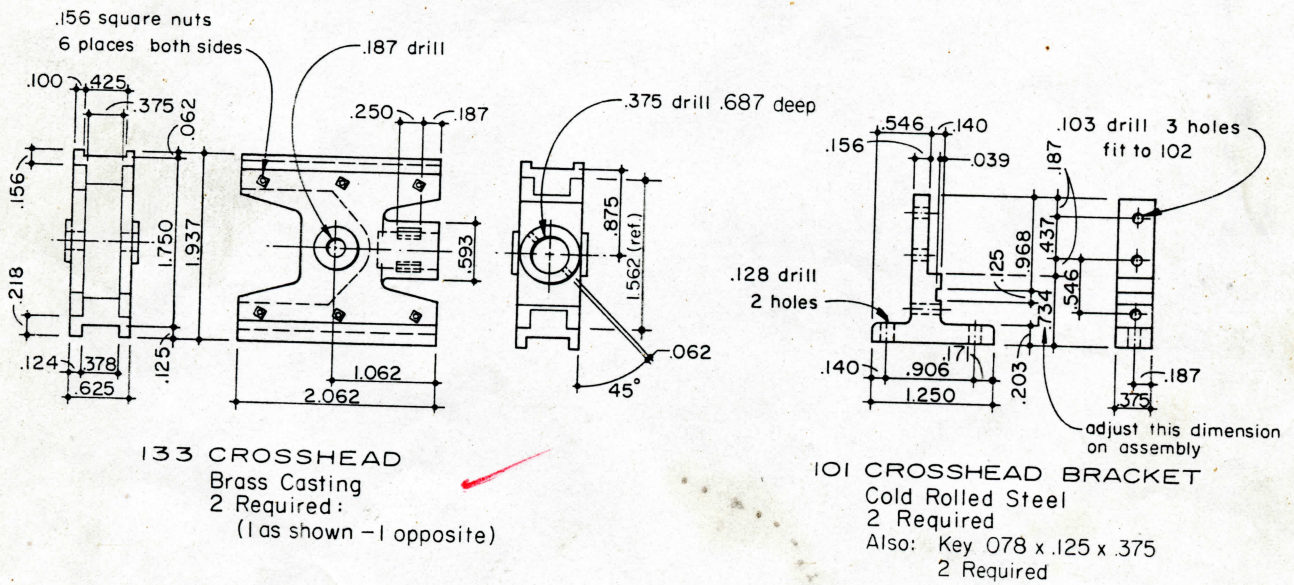
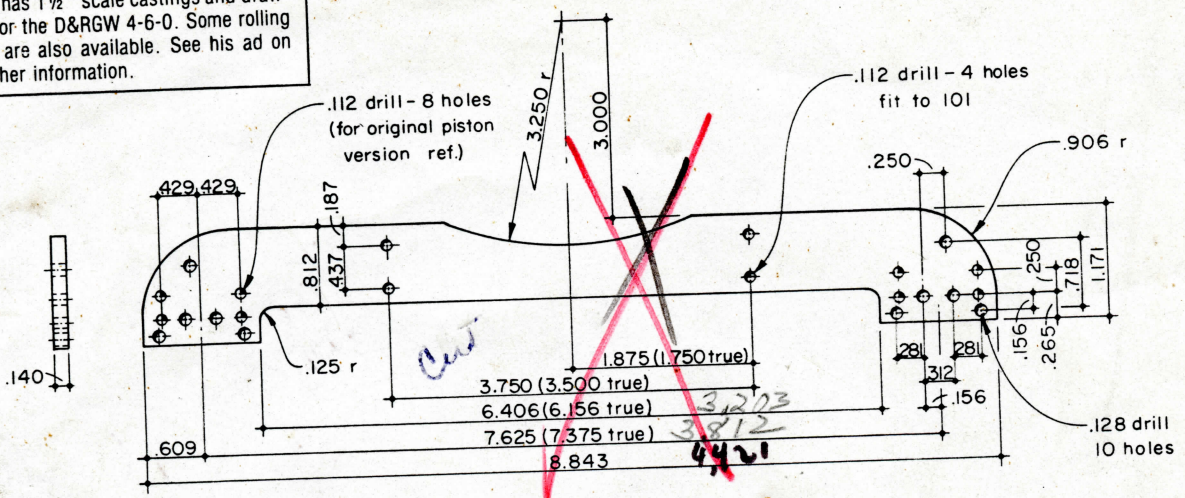


## CYLINDER GROUP II

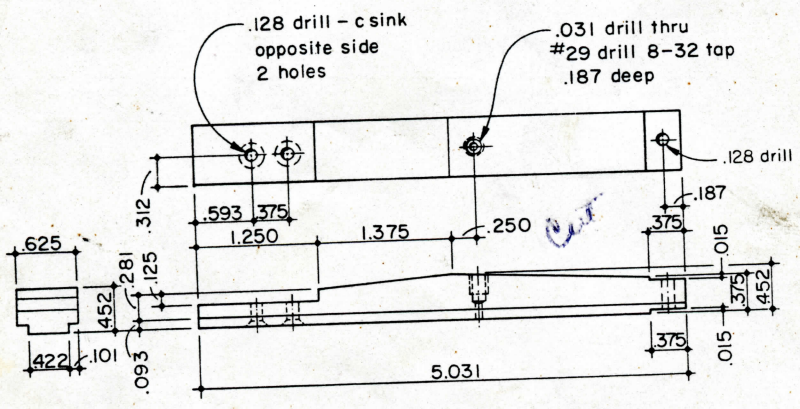




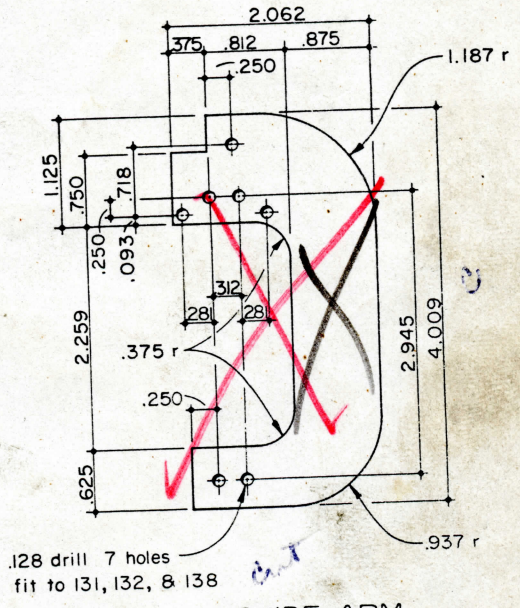
Warren Weston has 1 1/2" scale castings and drawings available for the D&RGW 4-6-0. Some rolling stock castings are also available. See his ad on page 4 for further information.



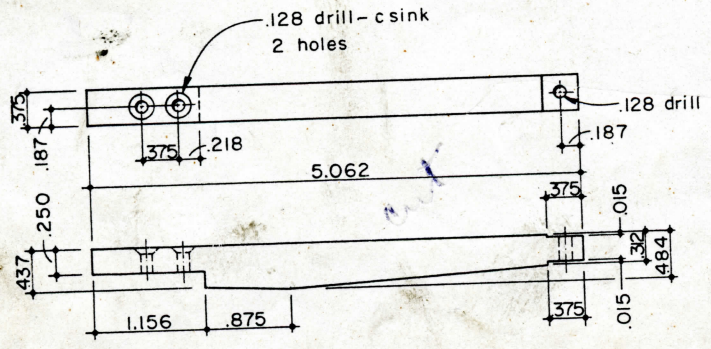
**138 CROSSHEAD SADDLE**  
Cold Rolled Steel  
1 Required



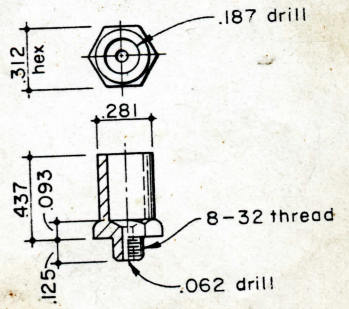
**128 UPPER GUIDE**  
Cold Rolled Steel  
2 Required



**190 GUIDE ARM**  
.187 Cold Rolled Steel  
2 Required



**130 LOWER GUIDE**  
Cold Rolled Steel  
2 Required



**134 OIL CUP**  
Brass  
2 Required