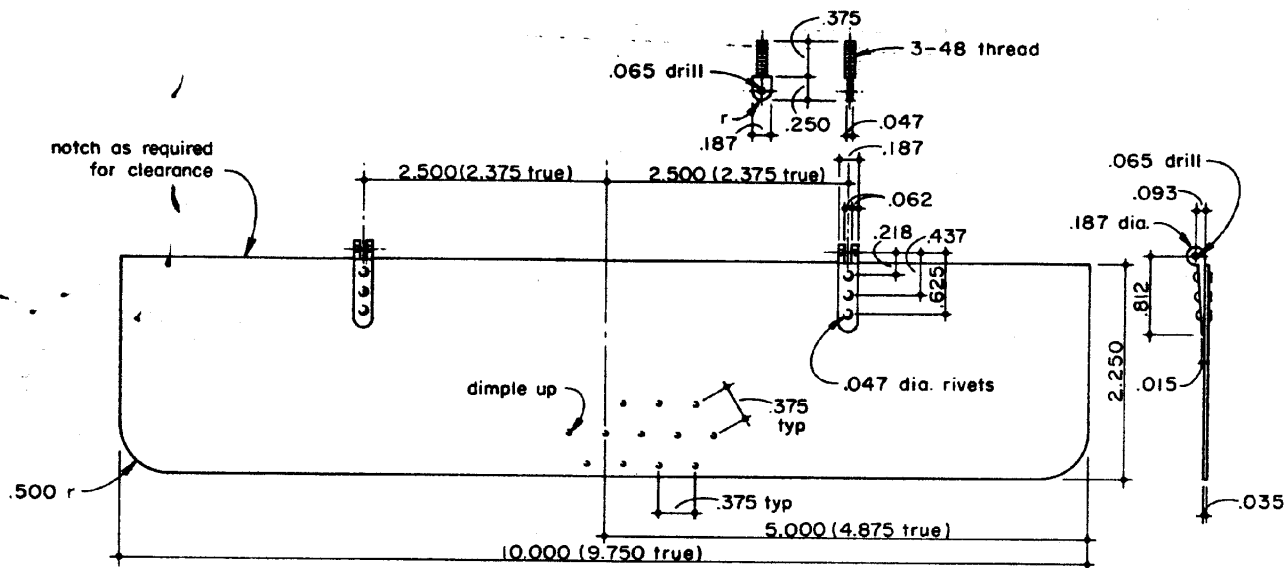


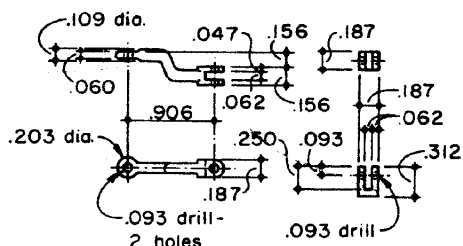
076 CAB GROUP

Space limitations this month don't permit the presentation of all the cab drawings. The balance will be included in next month's segment on piping.

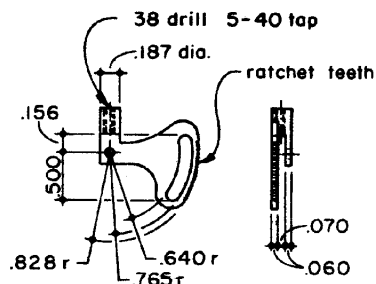
Warren Weston has 1/2" scale castings and drawings available for the D&RGW 4-6-0. Some rolling stock castings are also available. See his ad on page 74 for further information.



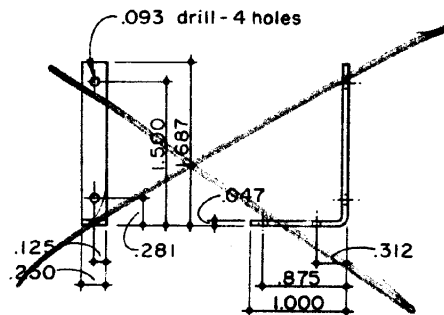
313 CAB APRON
Cold Rolled Steel
1 Required



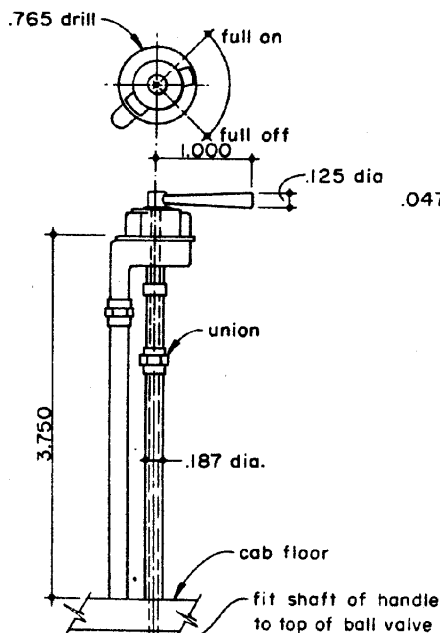
366 THROTTLE LINK
Cold Rolled Steel
1 Required



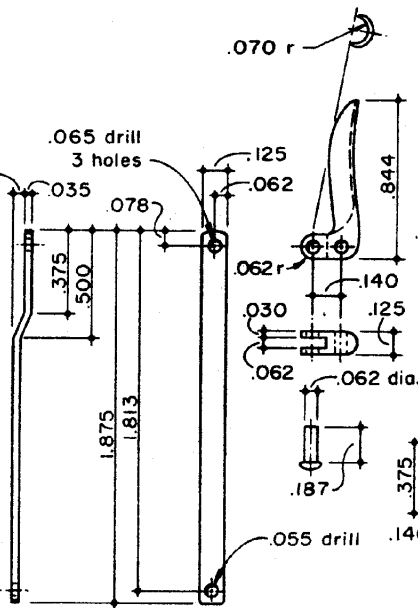
364 THROTTLE RATCHET
Cold Rolled Steel
1 Required



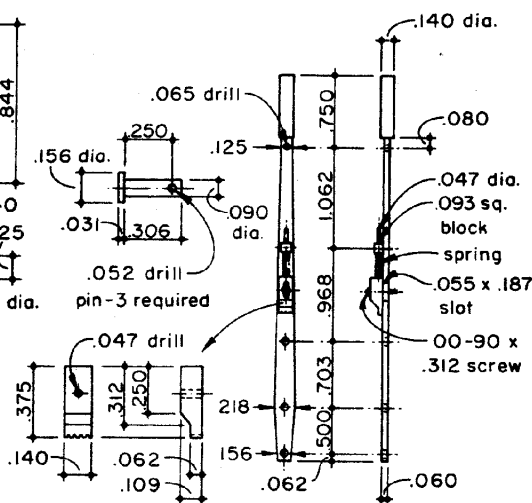
316 CAB REAR BRACE
Cold Rolled Steel
2 Required



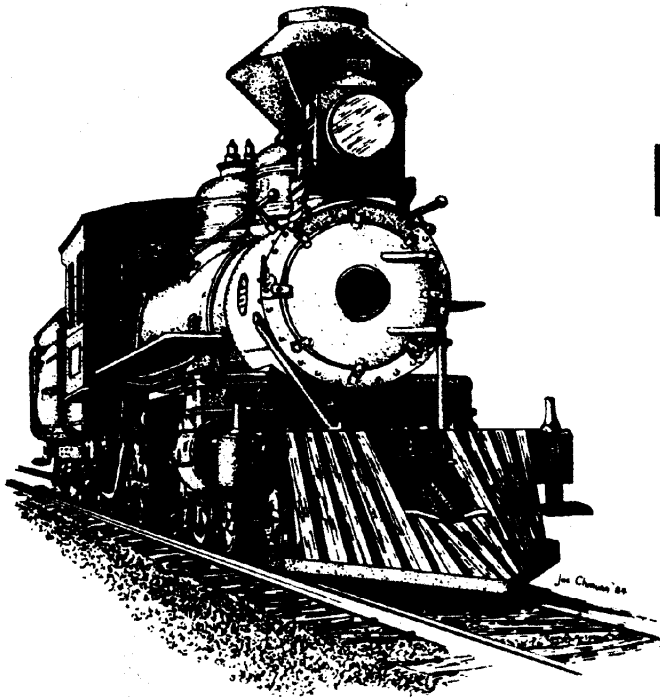
367 BRAKE LEVER STAND
Brass



365 RELEASE HANDLE & STRAP
Cold Rolled Steel



363 THROTTLE LEVER
Cold Rolled Steel
1 Required

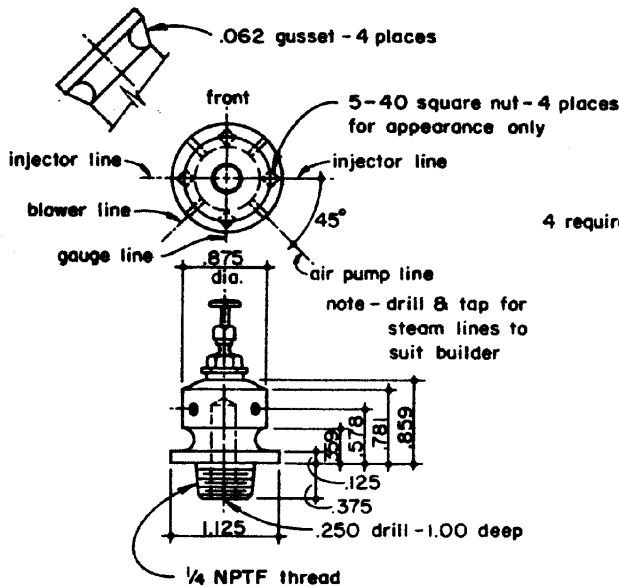


Piping and more cab drawings—
**RIO GRANDE'S T-12
 TEN WHEELERS**

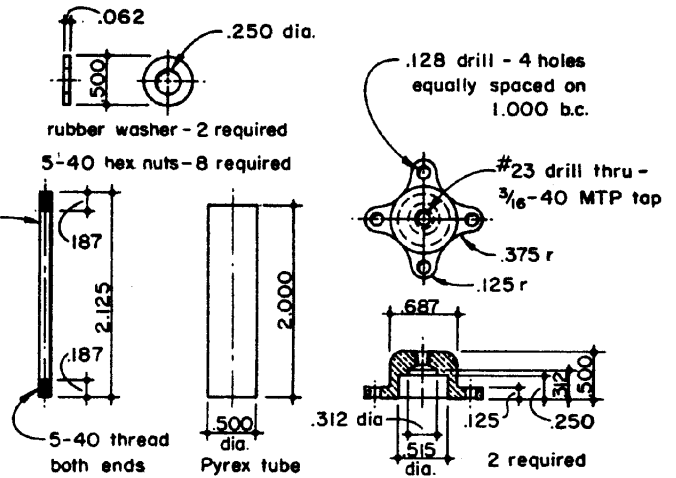
by Warren K. Weston
 and Gail O. Gish

PART 20

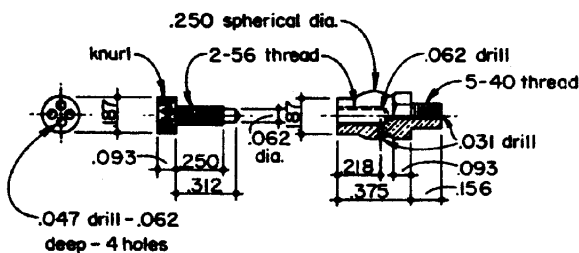
PHOTOS FROM THE COLLECTION OF WARREN K. WESTON
 DRAWINGS BY JERRY WILLIAMS FROM DESIGN BY WARREN K. WESTON



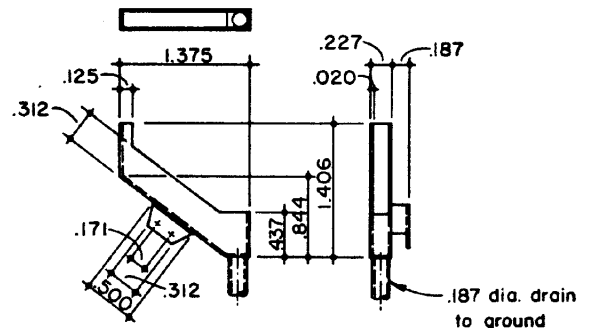
305 TURRET
 Brass
 1 Required



296 WATER GLASS
 Brass & As Noted
 1 Required



219 TRY COCK



368 TRY COCK PAN
 Brass